



Home report


7 Inkberry Circle, Quail Valley, Gaithersburg, Montgomery County, Maryland, United States, 20877




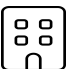
Property summary


 **1** Garages


 **3** Bedrooms

 **3** Bathrooms

 **1** Half baths

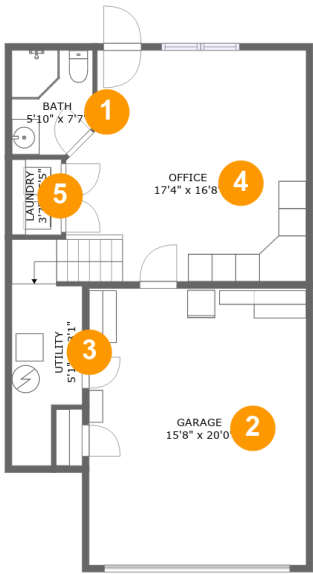
 **3** Floors

 **2,169** Gross living area sqft

 **2,701** Total sqft

Home report

7 Inkberry Circle, Quail Valley, Gaithersburg, Montgomery County, Maryland, United States, 20877



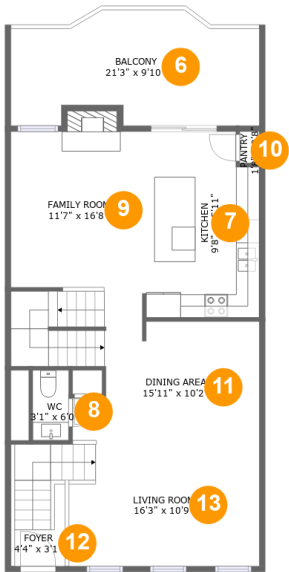
Room dimensions

Floor 1 Total sqft: 792    Living area: 451

#		Dimensions	sqft	Counted as living area
1	Bath	5'10" x 7'7"	42 sq. ft	Yes
2	Garage	15'8" x 20'0"	313 sq. ft	No
3	Utility	5'1" x 13'1"	57 sq. ft	Yes
4	Office	17'4" x 16'8"	286 sq. ft	Yes
5	Laundry	3'7" x 5'5"	19 sq. ft	Yes

Home report

7 Inkberry Circle, Quail Valley, Gaithersburg, Montgomery County, Maryland, United States, 20877



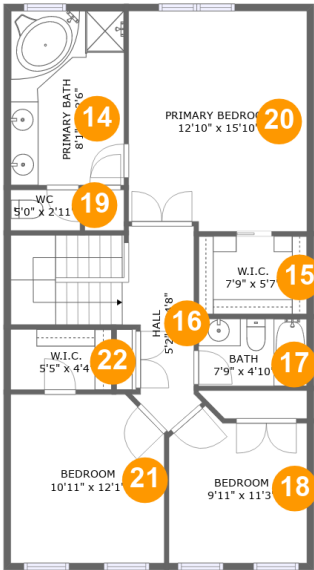
Room dimensions

Floor 2 Total sqft: 1026    Living area: 835

#		Dimensions	sqft	Counted as living area
6	Balcony	21'3" x 9'10"	182 sq. ft	No
7	Kitchen	9'8" x 15'11"	148 sq. ft	Yes
8	WC	3'1" x 6'0"	18 sq. ft	Yes
9	Family Room	11'7" x 16'8"	199 sq. ft	Yes
10	Pantry	1'8" x 2'8"	5 sq. ft	Yes
11	Dining Area	15'11" x 10'2"	168 sq. ft	Yes
12	Foyer	4'4" x 3'1"	48 sq. ft	Yes
13	Living Room	16'3" x 10'9"	179 sq. ft	Yes

Home report

7 Inkberry Circle, Quail Valley, Gaithersburg, Montgomery County, Maryland, United States, 20877



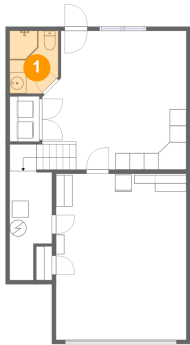
Room dimensions

Floor 3 Total sqft: 883    Living area: 883

#		Dimensions	sqft	Counted as living area
14	Primary Bath	8'1" x 12'6"	102 sq. ft	Yes
15	W.I.C.	7'9" x 5'7"	44 sq. ft	Yes
16	Hall	5'2" x 14'8"	114 sq. ft	Yes
17	Bath	7'9" x 4'10"	37 sq. ft	Yes
18	Bedroom	9'11" x 11'3"	100 sq. ft	Yes
19	WC	5'0" x 2'11"	15 sq. ft	Yes
20	Primary Bedroom	12'10" x 15'10"	199 sq. ft	Yes
21	Bedroom	10'11" x 12'1"	129 sq. ft	Yes
22	W.I.C.	5'5" x 4'4"	31 sq. ft	Yes

7 Inkberry Circle, Quail Valley, Gaithersburg, Montgomery  
County, Maryland, United States, 20877

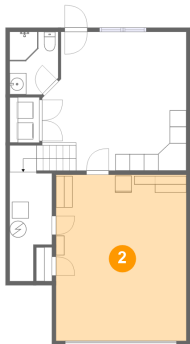
1 Floor 1 - Bath



Dimensions: 5'10" x 7'7"  
Area: 42 sq. ft  
Counted as living area: Yes

Heated: Yes  
Finished: Yes  
Enclosed: Yes  
Contiguous: Yes  
Permitted: Yes  
Wet space: Yes  
Addition: No  
Conversion: No

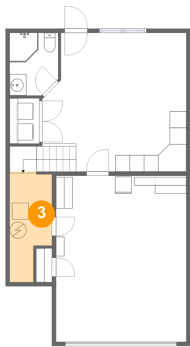
2 Floor 1 - Garage



Dimensions: 15'8" x 20'0"  
Area: 313 sq. ft  
Counted as living area: No

Heated: No  
Finished: No  
Enclosed: Yes  
Contiguous: Yes  
Permitted: Yes  
Wet space: No  
Addition: No  
Conversion: No

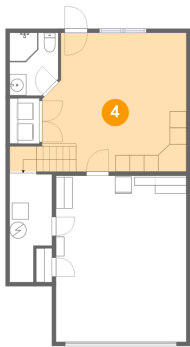
3 Floor 1 - Utility



Dimensions: 5'1" x 13'1"  
Area: 57 sq. ft  
Counted as living area: Yes

Heated: Yes  
Finished: Yes  
Enclosed: Yes  
Contiguous: Yes  
Permitted: Yes  
Wet space: No  
Addition: No  
Conversion: No

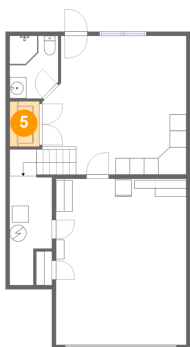
4 Floor 1 - Office



Dimensions: 17'4" x 16'8"  
Area: 286 sq. ft  
Counted as living area: Yes

Heated: Yes  
Finished: Yes  
Enclosed: Yes  
Contiguous: Yes  
Permitted: Yes  
Wet space: No  
Addition: No  
Conversion: No

5 Floor 1 - Laundry

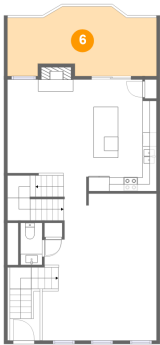


Dimensions: 3'7" x 5'5"  
Area: 19 sq. ft  
Counted as living area: Yes

Heated: Yes  
Finished: Yes  
Enclosed: Yes  
Contiguous: Yes  
Permitted: Yes  
Wet space: No  
Addition: No  
Conversion: No

7 Inkberry Circle, Quail Valley, Gaithersburg, Montgomery County, Maryland, United States, 20877

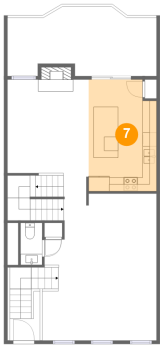
6 Floor 2 - Balcony



Dimensions: 21'3" x 9'10"  
Area: 182 sq. ft  
Counted as living area: No

Heated: No  
Finished: Yes  
Enclosed: No  
Contiguous: Yes  
Permitted: Yes  
Wet space: No  
Addition: No  
Conversion: No

7 Floor 2 - Kitchen



Dimensions: 9'8" x 15'11"  
Area: 148 sq. ft  
Counted as living area: Yes

Heated: Yes  
Finished: Yes  
Enclosed: Yes  
Contiguous: Yes  
Permitted: Yes  
Wet space: No  
Addition: No  
Conversion: No

8 Floor 2 - WC



Dimensions: 3'1" x 6'0"  
Area: 18 sq. ft  
Counted as living area: Yes

Heated: Yes  
Finished: Yes  
Enclosed: Yes  
Contiguous: Yes  
Permitted: Yes  
Wet space: Yes  
Addition: No  
Conversion: No

7 Inkberry Circle, Quail Valley, Gaithersburg, Montgomery County, Maryland, United States, 20877

9 Floor 2 - Family Room



Dimensions: 11'7" x 16'8"  
Area: 199 sq. ft  
Counted as living area: Yes

Heated: Yes  
Finished: Yes  
Enclosed: Yes  
Contiguous: Yes  
Permitted: Yes  
Wet space: No  
Addition: No  
Conversion: No

10 Floor 2 - Pantry



Dimensions: 1'8" x 2'8"  
Area: 5 sq. ft  
Counted as living area: Yes

Heated: Yes  
Finished: Yes  
Enclosed: Yes  
Contiguous: Yes  
Permitted: Yes  
Wet space: No  
Addition: No  
Conversion: No

11 Floor 2 - Dining Area



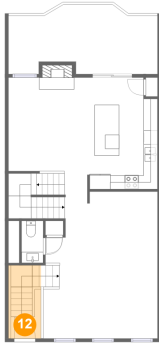
Dimensions: 15'11" x 10'2"  
Area: 168 sq. ft  
Counted as living area: Yes

Heated: Yes  
Finished: Yes  
Enclosed: Yes  
Contiguous: Yes  
Permitted: Yes  
Wet space: No  
Addition: No  
Conversion: No

## Home report

7 Inkberry Circle, Quail Valley, Gaithersburg, Montgomery County, Maryland, United States, 20877

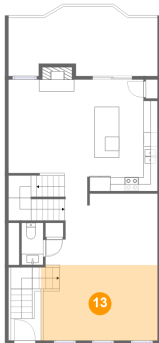
### 12 Floor 2 - Foyer



Dimensions: 4'4" x 3'1"  
Area: 48 sq. ft  
Counted as living area: Yes

Heated: Yes  
Finished: Yes  
Enclosed: Yes  
Contiguous: Yes  
Permitted: Yes  
Wet space: No  
Addition: No  
Conversion: No

### 13 Floor 2 - Living Room



Dimensions: 16'3" x 10'9"  
Area: 179 sq. ft  
Counted as living area: Yes

Heated: Yes  
Finished: Yes  
Enclosed: Yes  
Contiguous: Yes  
Permitted: Yes  
Wet space: No  
Addition: No  
Conversion: No

### 14 Floor 3 - Primary Bath



Dimensions: 8'1" x 12'6"  
Area: 102 sq. ft  
Counted as living area: Yes

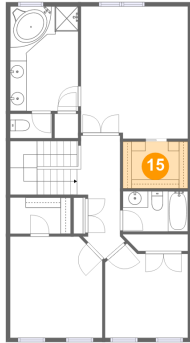
Heated: Yes  
Finished: Yes  
Enclosed: Yes  
Contiguous: Yes  
Permitted: Yes  
Wet space: Yes  
Addition: No  
Conversion: No

## Home report

7 Inkberry Circle, Quail Valley, Gaithersburg, Montgomery County, Maryland, United States, 20877

### 15 Floor 3 - W.I.C.

---

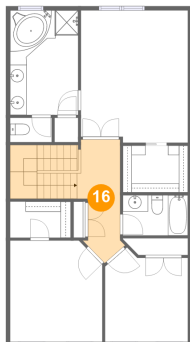


Dimensions: 7'9" x 5'7"  
Area: 44 sq. ft  
Counted as living area: Yes

Heated: Yes  
Finished: Yes  
Enclosed: Yes  
Contiguous: Yes  
Permitted: Yes  
Wet space: No  
Addition: No  
Conversion: No

### 16 Floor 3 - Hall

---

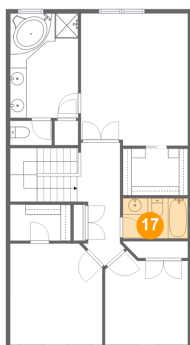


Dimensions: 5'2" x 14'8"  
Area: 114 sq. ft  
Counted as living area: Yes

Heated: Yes  
Finished: Yes  
Enclosed: Yes  
Contiguous: Yes  
Permitted: Yes  
Wet space: No  
Addition: No  
Conversion: No

### 17 Floor 3 - Bath

---

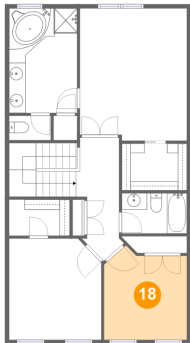


Dimensions: 7'9" x 4'10"  
Area: 37 sq. ft  
Counted as living area: Yes

Heated: Yes  
Finished: Yes  
Enclosed: Yes  
Contiguous: Yes  
Permitted: Yes  
Wet space: Yes  
Addition: No  
Conversion: No

7 Inkberry Circle, Quail Valley, Gaithersburg, Montgomery County, Maryland, United States, 20877

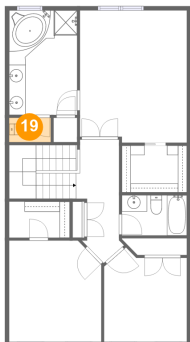
18 Floor 3 - Bedroom



Dimensions: 9'11" x 11'3"  
Area: 100 sq. ft  
Counted as living area: Yes

Heated: Yes  
Finished: Yes  
Enclosed: Yes  
Contiguous: Yes  
Permitted: Yes  
Wet space: No  
Addition: No  
Conversion: No

19 Floor 3 - WC



Dimensions: 5'0" x 2'11"  
Area: 15 sq. ft  
Counted as living area: Yes

Heated: Yes  
Finished: Yes  
Enclosed: Yes  
Contiguous: Yes  
Permitted: Yes  
Wet space: Yes  
Addition: No  
Conversion: No

20 Floor 3 - Primary Bedroom

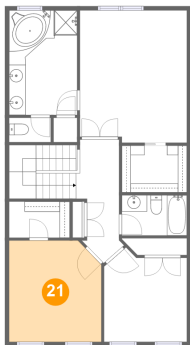


Dimensions: 12'10" x 15'10"  
Area: 199 sq. ft  
Counted as living area: Yes

Heated: Yes  
Finished: Yes  
Enclosed: Yes  
Contiguous: Yes  
Permitted: Yes  
Wet space: No  
Addition: No  
Conversion: No

7 Inkberry Circle, Quail Valley, Gaithersburg, Montgomery  
County, Maryland, United States, 20877

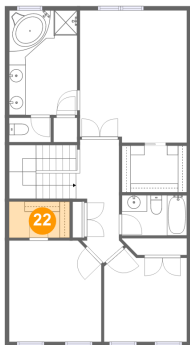
21 Floor 3 - Bedroom



Dimensions: 10'11" x 12'1"  
Area: 129 sq. ft  
Counted as living area: Yes

Heated: Yes  
Finished: Yes  
Enclosed: Yes  
Contiguous: Yes  
Permitted: Yes  
Wet space: No  
Addition: No  
Conversion: No

22 Floor 3 - W.I.C.



Dimensions: 5'5" x 4'4"  
Area: 31 sq. ft  
Counted as living area: Yes

Heated: Yes  
Finished: Yes  
Enclosed: Yes  
Contiguous: Yes  
Permitted: Yes  
Wet space: No  
Addition: No  
Conversion: No