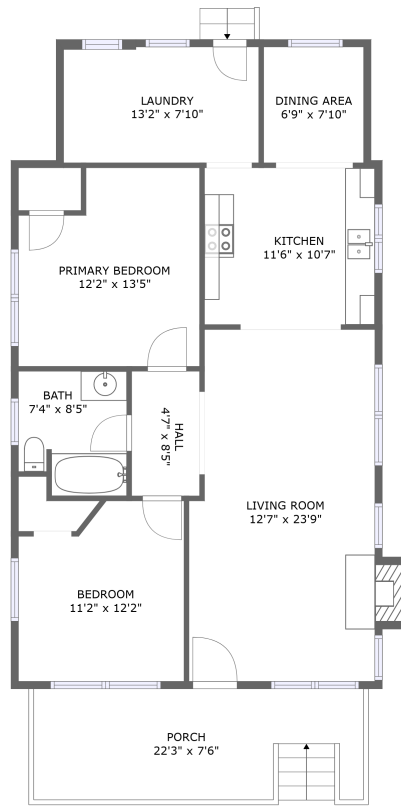


1122 Dale Avenue Southeast, Belmont, Roanoke, Roanoke, Virginia, United States, 24013



FLOOR 1

Property Summary

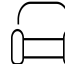
 **0** garages

 **2** bedrooms

 **1** bathrooms

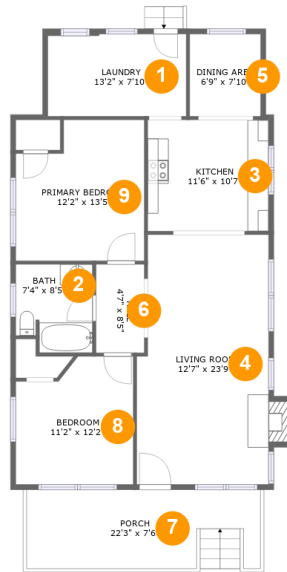
 **0** half baths

 **1** floors

 **1,039** Gross Living Area sqft

 **1,243** total sqft

1122 Dale Avenue Southeast, Belmont, Roanoke, Roanoke, Virginia, United States, 24013



Room Dimensions

Floor 1

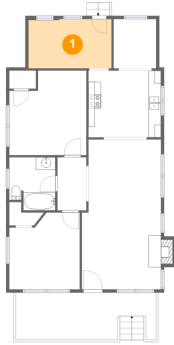
Total sqft: 1243

Living area: 1039

#	Room name	Dimensions	Area (sqft)	Counted as Living Area
1	Laundry	13'2" x 7'10"	102 sq. ft	Yes
2	Bath	7'4" x 8'5"	57 sq. ft	Yes
3	Kitchen	11'6" x 10'7"	122 sq. ft	Yes
4	Living Room	12'7" x 23'9"	294 sq. ft	Yes
5	Dining Area	6'9" x 7'10"	53 sq. ft	Yes
6	Hall	4'7" x 8'5"	39 sq. ft	Yes
7	Porch	22'3" x 7'6"	165 sq. ft	No
8	Bedroom	11'2" x 12'2"	124 sq. ft	Yes
9	Primary Bedroom	12'2" x 13'5"	149 sq. ft	Yes

1122 Dale Avenue Southeast, Belmont, Roanoke, Roanoke, Virginia, United States, 24013

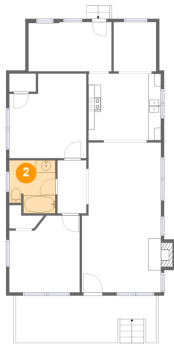
1 Floor 1 - Laundry



Dimensions: 13'2" x 7'10"
Area: 102 sq. ft
Counted as Living Area:
Yes

Heated: Yes
Finished: Yes
Enclosed: Yes
Contiguous:
Yes
Permitted: Yes
Wet Space: No
Addition: No
Conversion: No

2 Floor 1 - Bath

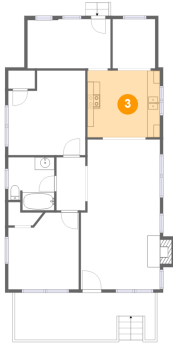


Dimensions: 7'4" x 8'5"
Area: 57 sq. ft
Counted as Living Area:
Yes

Heated: Yes
Finished: Yes
Enclosed: Yes
Contiguous:
Yes
Permitted: Yes
Wet Space: Yes
Addition: No
Conversion: No

1122 Dale Avenue Southeast, Belmont, Roanoke, Roanoke, Virginia, United States, 24013

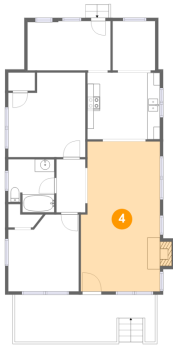
3 Floor 1 - Kitchen



Dimensions: 11'6" x 10'7"
Area: 122 sq. ft
Counted as Living Area:
Yes

Heated: Yes
Finished: Yes
Enclosed: Yes
Contiguous:
Yes
Permitted: Yes
Wet Space: No
Addition: No
Conversion: No

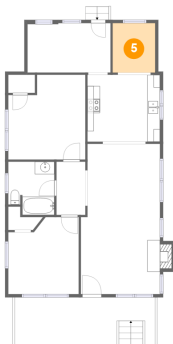
4 Floor 1 - Living Room



Dimensions: 12'7" x 23'9"
Area: 294 sq. ft
Counted as Living Area:
Yes

Heated: Yes
Finished: Yes
Enclosed: Yes
Contiguous:
Yes
Permitted: Yes
Wet Space: No
Addition: No
Conversion: No

5 Floor 1 - Dining Area

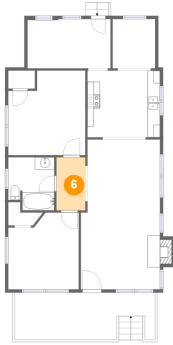


Dimensions: 6'9" x 7'10"
Area: 53 sq. ft
Counted as Living Area:
Yes

Heated: Yes
Finished: Yes
Enclosed: Yes
Contiguous:
Yes
Permitted: Yes
Wet Space: No
Addition: No
Conversion: No

1122 Dale Avenue Southeast, Belmont, Roanoke, Roanoke, Virginia, United States, 24013

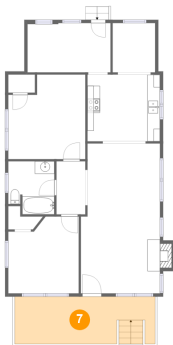
6 Floor 1 - Hall



Dimensions: 4'7" x 8'5"
Area: 39 sq. ft
Counted as Living Area:
Yes

Heated: Yes
Finished: Yes
Enclosed: Yes
Contiguous:
Yes
Permitted: Yes
Wet Space: No
Addition: No
Conversion: No

7 Floor 1 - Porch



Dimensions: 22'3" x 7'6"
Area: 165 sq. ft
Counted as Living Area: No

Heated: No
Finished: Yes
Enclosed: No
Contiguous: Yes
Permitted: Yes
Wet Space: No
Addition: No
Conversion: No

8 Floor 1 - Bedroom



Dimensions: 11'2" x 12'2"
Area: 124 sq. ft
Counted as Living Area:
Yes

Heated: Yes
Finished: Yes
Enclosed: Yes
Contiguous:
Yes
Permitted: Yes
Wet Space: No
Addition: No
Conversion: No

1122 Dale Avenue Southeast, Belmont, Roanoke, Roanoke, Virginia, United States, 24013

9 Floor 1 - Primary Bedroom



Dimensions: 12'2" x 13'5"
Area: 149 sq. ft
Counted as Living Area:
Yes

Heated: Yes
Finished: Yes
Enclosed: Yes
Contiguous:
Yes
Permitted: Yes
Wet Space: No
Addition: No
Conversion: No