



Home report


23094 Piney Creek Drive, Athens, Limestone County, Alabama,
United States, 35613




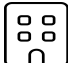
Property summary


 **2** Garages


 **3** Bedrooms

 **4** Bathrooms

 **1** Half baths

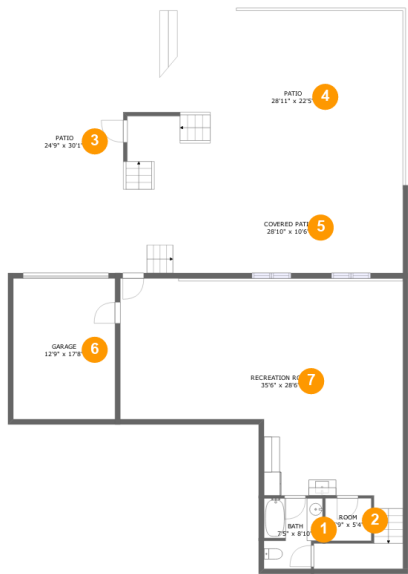
 **2** Floors

 **3,819** Gross living area sqft

 **7,581** Total sqft

Home report

23094 Piney Creek Drive, Athens, Limestone County, Alabama,
United States, 35613



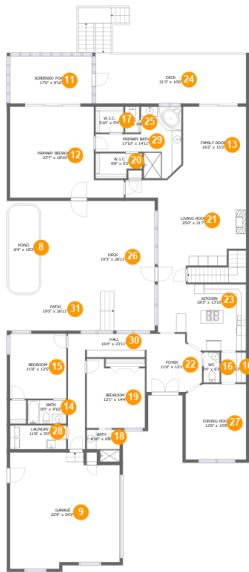
Room dimensions

Floor 1 Total sqft: 2958 Living area: 1061

#		Dimensions	sqft	Counted as living area
1	Bath	7'5" x 8'10"	59 sq. ft	Yes
2	Room	5'9" x 5'4"	31 sq. ft	Yes
3	Patio	24'9" x 30'1"	702 sq. ft	No
4	Patio	28'11" x 22'5"	635 sq. ft	No
5	Covered Patio	28'10" x 10'6"	304 sq. ft	No
6	Garage	12'9" x 17'8"	226 sq. ft	No
7	Recreation Room	35'6" x 28'6"	854 sq. ft	Yes

Home report

23094 Piney Creek Drive, Athens, Limestone County, Alabama,
United States, 35613



Room dimensions

Floor 2 Total sqft: 4623 Living area: 2758

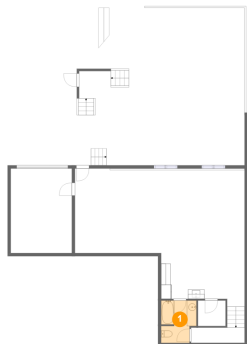
#		Dimensions	sqft	Counted as living area
8	Pond	6'4" x 18'2"	113 sq. ft	No
9	Garage	22'9" x 24'2"	512 sq. ft	No
10	Hall	5'2" x 6'3"	32 sq. ft	Yes
11	Screened Porch	17'0" x 9'10"	168 sq. ft	No
12	Primary Bedroom	23'7" x 18'10"	351 sq. ft	Yes
13	Family Room	16'2" x 15'2"	204 sq. ft	Yes
14	Bath	8'0" x 4'10"	39 sq. ft	Yes
15	Bedroom	11'8" x 13'5"	157 sq. ft	Yes
16	WC	3'4" x 6'3"	21 sq. ft	Yes
17	W.I.C.	5'10" x 5'4"	31 sq. ft	Yes
18	Bath	6'10" x 6'8"	39 sq. ft	Yes

Home report

**23094 Piney Creek Drive, Athens, Limestone County, Alabama,
United States, 35613**

#		Dimensions	sqft	Counted as living area
19	Bedroom	12'1" x 14'4"	157 sq. ft	Yes
20	W.I.C.	9'8" x 5'2"	44 sq. ft	Yes
21	Living Room	25'0" x 21'7"	358 sq. ft	Yes
22	Foyer	11'6" x 12'1"	126 sq. ft	Yes
23	Kitchen	18'3" x 13'10"	226 sq. ft	Yes
24	Deck	31'3" x 10'6"	393 sq. ft	No
25	WC	2'11" x 5'4"	16 sq. ft	Yes
26	Deck	19'3" x 26'11"	424 sq. ft	No
27	Dining Room	12'6" x 15'8"	192 sq. ft	Yes
28	Laundry	11'8" x 5'0"	58 sq. ft	Yes
29	Primary Bath	17'10" x 14'11"	152 sq. ft	Yes
30	Hall	16'4" x 23'11"	146 sq. ft	Yes
31	Patio	19'5" x 26'11"	402 sq. ft	No

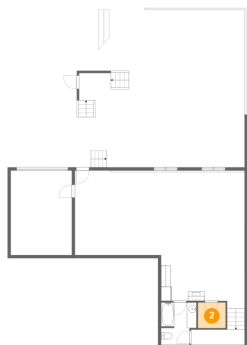
1 Floor 1 - Bath



Dimensions: 7'5" x 8'10"
Area: 59 sq. ft
Counted as living area: Yes

Heated: Yes
Finished: Yes
Enclosed: Yes
Contiguous: Yes
Permitted: Yes
Wet space: Yes
Addition: No
Conversion: No

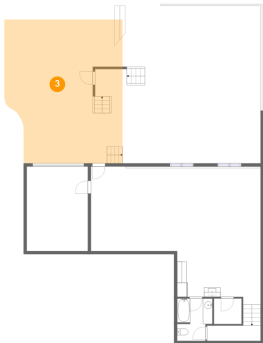
2 Floor 1 - Room



Dimensions: 5'9" x 5'4"
Area: 31 sq. ft
Counted as living area: Yes

Heated: Yes
Finished: Yes
Enclosed: Yes
Contiguous: Yes
Permitted: Yes
Wet space: No
Addition: No
Conversion: No

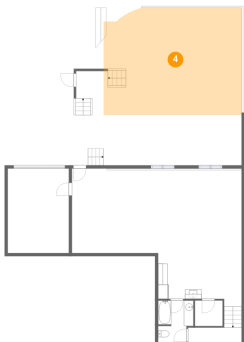
3 Floor 1 - Patio



Dimensions: 24'9" x 30'1"
Area: 702 sq. ft
Counted as living area: No

Heated: No
Finished: Yes
Enclosed: No
Contiguous: Yes
Permitted: Yes
Wet space: No
Addition: No
Conversion: No

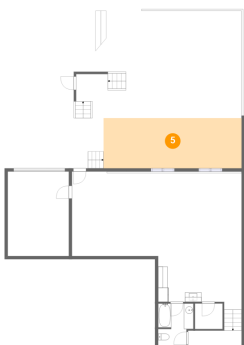
4 Floor 1 - Patio



Dimensions: 28'11" x 22'5"
Area: 635 sq. ft
Counted as living area: No

Heated: No
Finished: Yes
Enclosed: No
Contiguous: Yes
Permitted: Yes
Wet space: No
Addition: No
Conversion: No

5 Floor 1 - Covered Patio



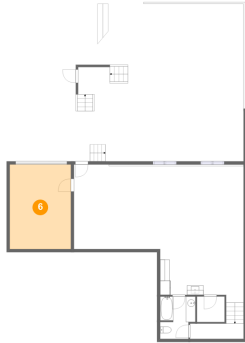
Dimensions: 28'10" x 10'6"
Area: 304 sq. ft
Counted as living area: No

Heated: No
Finished: Yes
Enclosed: No
Contiguous: Yes
Permitted: Yes
Wet space: No
Addition: No
Conversion: No

Home report

23094 Piney Creek Drive, Athens, Limestone County, Alabama,
United States, 35613

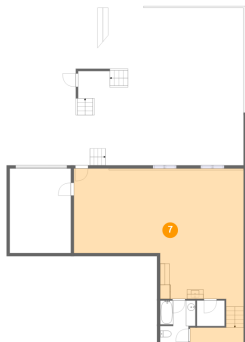
6 Floor 1 - Garage



Dimensions: 12'9" x 17'8"
Area: 226 sq. ft
Counted as living area: No

Heated: No
Finished: No
Enclosed: Yes
Contiguous: Yes
Permitted: Yes
Wet space: No
Addition: No
Conversion: No

7 Floor 1 - Recreation Room



Dimensions: 35'6" x 28'6"
Area: 854 sq. ft
Counted as living area: Yes

Heated: Yes
Finished: Yes
Enclosed: Yes
Contiguous: Yes
Permitted: Yes
Wet space: No
Addition: No
Conversion: No

8 Floor 2 - Pond



Dimensions: 6'4" x 18'2"
Area: 113 sq. ft
Counted as living area: No

Heated: No
Finished: No
Enclosed: No
Contiguous: Yes
Permitted: No
Wet space: No
Addition: No
Conversion: No

Home report

23094 Piney Creek Drive, Athens, Limestone County, Alabama,
United States, 35613

9 Floor 2 - Garage



Dimensions: 22'9" x 24'2"
Area: 512 sq. ft
Counted as living area: No

Heated: No
Finished: No
Enclosed: Yes
Contiguous: Yes
Permitted: Yes
Wet space: No
Addition: No
Conversion: No

10 Floor 2 - Hall



Dimensions: 5'2" x 6'3"
Area: 32 sq. ft
Counted as living area: Yes

Heated: Yes
Finished: Yes
Enclosed: Yes
Contiguous: Yes
Permitted: Yes
Wet space: No
Addition: No
Conversion: No

11 Floor 2 - Screened Porch



Dimensions: 17'0" x 9'10"
Area: 168 sq. ft
Counted as living area: No

Heated: No
Finished: Yes
Enclosed: No
Contiguous: Yes
Permitted: Yes
Wet space: No
Addition: No
Conversion: No

23094 Piney Creek Drive, Athens, Limestone County, Alabama,
United States, 35613

12 Floor 2 - Primary Bedroom



Dimensions: 23'7" x 18'10"
Area: 351 sq. ft
Counted as living area: Yes

Heated: Yes
Finished: Yes
Enclosed: Yes
Contiguous: Yes
Permitted: Yes
Wet space: No
Addition: No
Conversion: No

13 Floor 2 - Family Room



Dimensions: 16'2" x 15'2"
Area: 204 sq. ft
Counted as living area: Yes

Heated: Yes
Finished: Yes
Enclosed: Yes
Contiguous: Yes
Permitted: Yes
Wet space: No
Addition: No
Conversion: No

14 Floor 2 - Bath



Dimensions: 8'0" x 4'10"
Area: 39 sq. ft
Counted as living area: Yes

Heated: Yes
Finished: Yes
Enclosed: Yes
Contiguous: Yes
Permitted: Yes
Wet space: Yes
Addition: No
Conversion: No

15 Floor 2 - Bedroom



Dimensions: 11'8" x 13'5"
Area: 157 sq. ft
Counted as living area: Yes

Heated: Yes
Finished: Yes
Enclosed: Yes
Contiguous: Yes
Permitted: Yes
Wet space: No
Addition: No
Conversion: No

16 Floor 2 - WC



Dimensions: 3'4" x 6'3"
Area: 21 sq. ft
Counted as living area: Yes

Heated: Yes
Finished: Yes
Enclosed: Yes
Contiguous: Yes
Permitted: Yes
Wet space: Yes
Addition: No
Conversion: No

17 Floor 2 - W.I.C.



Dimensions: 5'10" x 5'4"
Area: 31 sq. ft
Counted as living area: Yes

Heated: Yes
Finished: Yes
Enclosed: Yes
Contiguous: Yes
Permitted: Yes
Wet space: No
Addition: No
Conversion: No

18 Floor 2 - Bath



Dimensions: 6'10" x 6'8"
Area: 39 sq. ft
Counted as living area: Yes

Heated: Yes
Finished: Yes
Enclosed: Yes
Contiguous: Yes
Permitted: Yes
Wet space: Yes
Addition: No
Conversion: No

19 Floor 2 - Bedroom



Dimensions: 12'1" x 14'4"
Area: 157 sq. ft
Counted as living area: Yes

Heated: Yes
Finished: Yes
Enclosed: Yes
Contiguous: Yes
Permitted: Yes
Wet space: No
Addition: No
Conversion: No

20 Floor 2 - W.I.C.



Dimensions: 9'8" x 5'2"
Area: 44 sq. ft
Counted as living area: Yes

Heated: Yes
Finished: Yes
Enclosed: Yes
Contiguous: Yes
Permitted: Yes
Wet space: No
Addition: No
Conversion: No

Home report

23094 Piney Creek Drive, Athens, Limestone County, Alabama,
United States, 35613

21 Floor 2 - Living Room



Dimensions: 25'0" x 21'7"
Area: 358 sq. ft
Counted as living area: Yes

Heated: Yes
Finished: Yes
Enclosed: Yes
Contiguous: Yes
Permitted: Yes
Wet space: No
Addition: No
Conversion: No

22 Floor 2 - Foyer



Dimensions: 11'6" x 12'1"
Area: 126 sq. ft
Counted as living area: Yes

Heated: Yes
Finished: Yes
Enclosed: Yes
Contiguous: Yes
Permitted: Yes
Wet space: No
Addition: No
Conversion: No

23 Floor 2 - Kitchen



Dimensions: 18'3" x 13'10"
Area: 226 sq. ft
Counted as living area: Yes

Heated: Yes
Finished: Yes
Enclosed: Yes
Contiguous: Yes
Permitted: Yes
Wet space: No
Addition: No
Conversion: No

Home report

23094 Piney Creek Drive, Athens, Limestone County, Alabama,
United States, 35613

24 Floor 2 - Deck



Dimensions: 31'3" x 10'6"
Area: 393 sq. ft
Counted as living area: No

Heated: No
Finished: Yes
Enclosed: No
Contiguous: Yes
Permitted: Yes
Wet space: No
Addition: No
Conversion: No

25 Floor 2 - WC



Dimensions: 2'11" x 5'4"
Area: 16 sq. ft
Counted as living area: Yes

Heated: Yes
Finished: Yes
Enclosed: Yes
Contiguous: Yes
Permitted: Yes
Wet space: Yes
Addition: No
Conversion: No

26 Floor 2 - Deck



Dimensions: 19'3" x 26'11"
Area: 424 sq. ft
Counted as living area: No

Heated: No
Finished: Yes
Enclosed: No
Contiguous: Yes
Permitted: Yes
Wet space: No
Addition: No
Conversion: No

23094 Piney Creek Drive, Athens, Limestone County, Alabama,
United States, 35613

27 Floor 2 - Dining Room



Dimensions: 12'6" x 15'8"
Area: 192 sq. ft
Counted as living area: Yes

Heated: Yes
Finished: Yes
Enclosed: Yes
Contiguous: Yes
Permitted: Yes
Wet space: No
Addition: No
Conversion: No

28 Floor 2 - Laundry



Dimensions: 11'8" x 5'0"
Area: 58 sq. ft
Counted as living area: Yes

Heated: Yes
Finished: Yes
Enclosed: Yes
Contiguous: Yes
Permitted: Yes
Wet space: No
Addition: No
Conversion: No

29 Floor 2 - Primary Bath



Dimensions: 17'10" x 14'11"
Area: 152 sq. ft
Counted as living area: Yes

Heated: Yes
Finished: Yes
Enclosed: Yes
Contiguous: Yes
Permitted: Yes
Wet space: Yes
Addition: No
Conversion: No

30 Floor 2 - Hall



Dimensions: 16'4" x 23'11"
Area: 146 sq. ft
Counted as living area: Yes

Heated: Yes
Finished: Yes
Enclosed: Yes
Contiguous: Yes
Permitted: Yes
Wet space: No
Addition: No
Conversion: No

31 Floor 2 - Patio



Dimensions: 19'5" x 26'11"
Area: 402 sq. ft
Counted as living area: No

Heated: No
Finished: Yes
Enclosed: No
Contiguous: Yes
Permitted: Yes
Wet space: No
Addition: No
Conversion: No