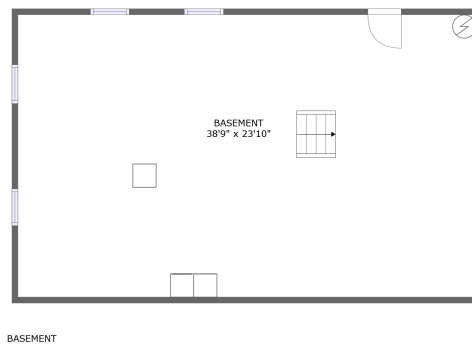
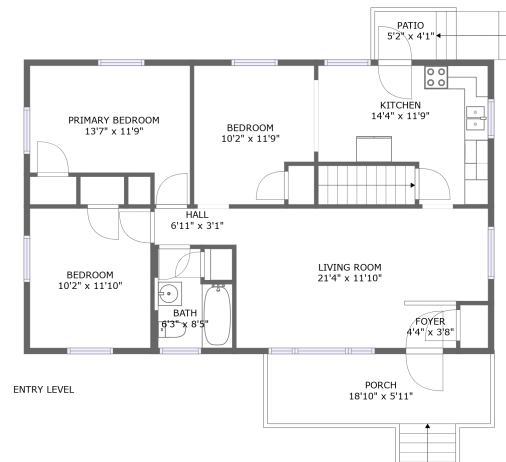




2152 Ellison Avenue, Alta View, Salem, Salem city, Virginia, United States, 24153



Property summary


 **0**
Garages

 **3**
Bedrooms

 **1**
Bathrooms

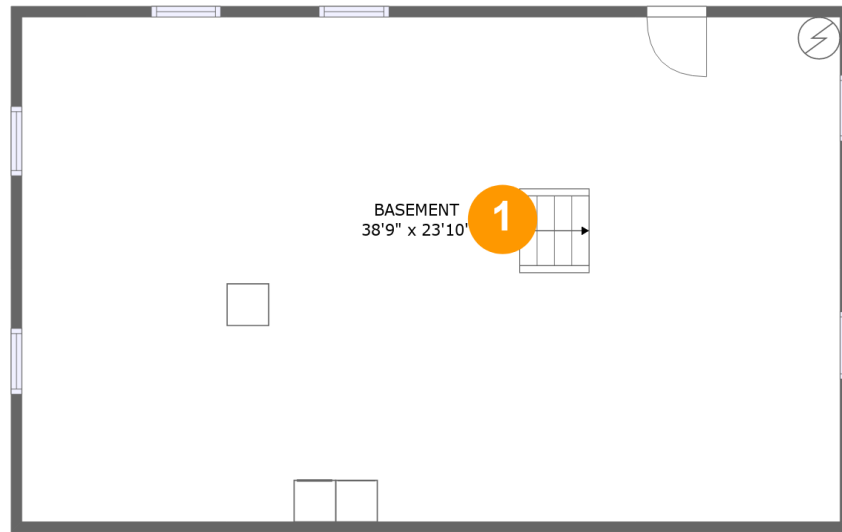
 **0**
Half baths

 **2**
Floors

 **989**
Gross living
area sqft

 **2,126**
Total sqft

**2152 Ellison Avenue, Alta View, Salem, Salem city,
Virginia, United States, 24153**



Room dimensions

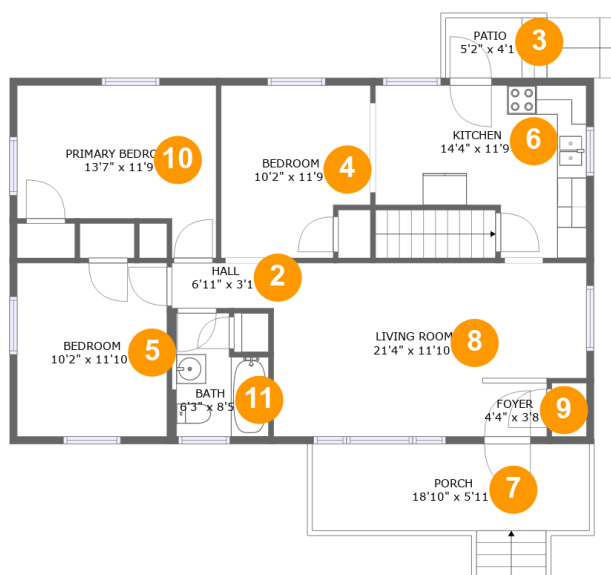
Floor 1

Total sqft: 989

Living area: 0

#		Dimensions	sqft	Counted as living area
1	Basement	38'9" x 23'10"	925 sq. ft	No

2152 Ellison Avenue, Alta View, Salem, Salem city,
Virginia, United States, 24153



Room dimensions

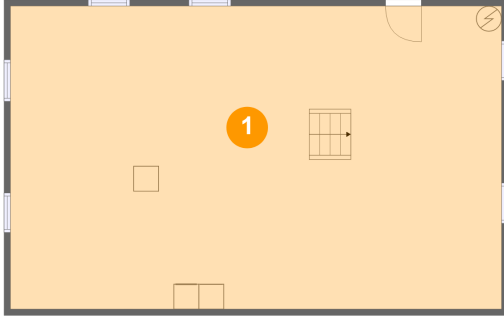
Floor 2

Total sqft: 1137 Living area: 989

#		Dimensions	sqft	Counted as living area
2	Hall	6'11" x 3'1"	21 sq. ft	Yes
3	Patio	5'2" x 4'1"	21 sq. ft	No
4	Bedroom	10'2" x 11'9"	110 sq. ft	Yes
5	Bedroom	10'2" x 11'10"	120 sq. ft	Yes
6	Kitchen	14'4" x 11'9"	138 sq. ft	Yes
7	Porch	18'10" x 5'11"	127 sq. ft	No
8	Living Room	21'4" x 11'10"	223 sq. ft	Yes
9	Foyer	4'4" x 3'8"	17 sq. ft	Yes
10	Primary Bedroom	13'7" x 11'9"	131 sq. ft	Yes
11	Bath	6'3" x 8'5"	46 sq. ft	Yes

**2152 Ellison Avenue, Alta View, Salem, Salem city,
Virginia, United States, 24153**

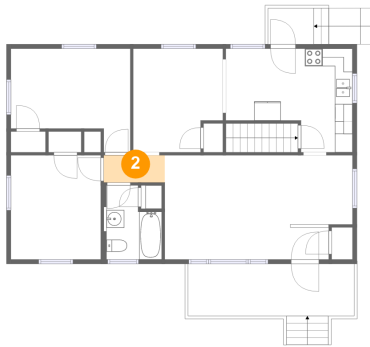
1 Floor 1 - Basement



Dimensions: 38'9" x 23'10"
Area: 925 sq. ft
Counted as living area: No

Heated: Yes
Finished: No
Enclosed: Yes
Contiguous: Yes
Permitted: Yes
Wet space: No
Addition: No
Conversion: No

2 Floor 2 - Hall

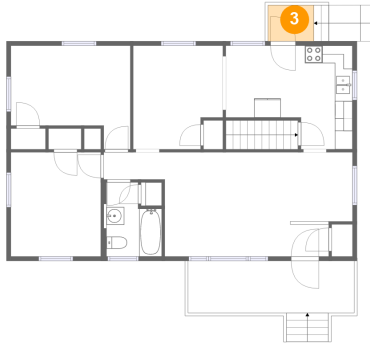


Dimensions: 6'11" x 3'1"
Area: 21 sq. ft
Counted as living area: Yes

Heated: Yes
Finished: Yes
Enclosed: Yes
Contiguous: Yes
Permitted: Yes
Wet space: No
Addition: No
Conversion: No

2152 Ellison Avenue, Alta View, Salem, Salem city,
Virginia, United States, 24153

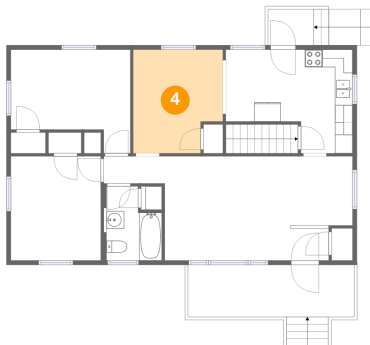
3 Floor 2 - Patio



Dimensions: 5'2" x 4'1"
Area: 21 sq. ft
Counted as living area: No

Heated: No
Finished: Yes
Enclosed: No
Contiguous: Yes
Permitted: Yes
Wet space: No
Addition: No
Conversion: No

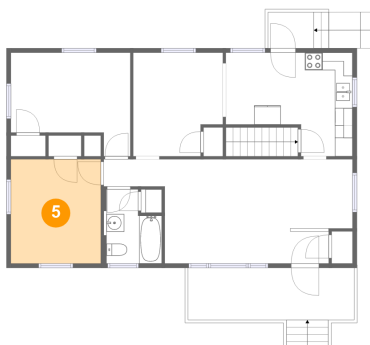
4 Floor 2 - Bedroom



Dimensions: 10'2" x 11'9"
Area: 110 sq. ft
Counted as living area: Yes

Heated: Yes
Finished: Yes
Enclosed: Yes
Contiguous: Yes
Permitted: Yes
Wet space: No
Addition: No
Conversion: No

5 Floor 2 - Bedroom

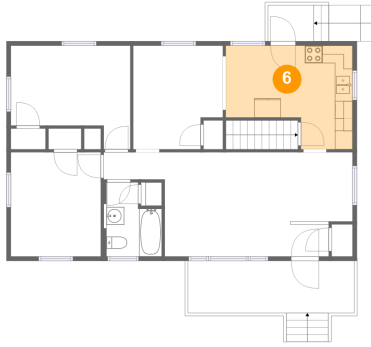


Dimensions: 10'2" x 11'10"
Area: 120 sq. ft
Counted as living area: Yes

Heated: Yes
Finished: Yes
Enclosed: Yes
Contiguous: Yes
Permitted: Yes
Wet space: No
Addition: No
Conversion: No

2152 Ellison Avenue, Alta View, Salem, Salem city,
Virginia, United States, 24153

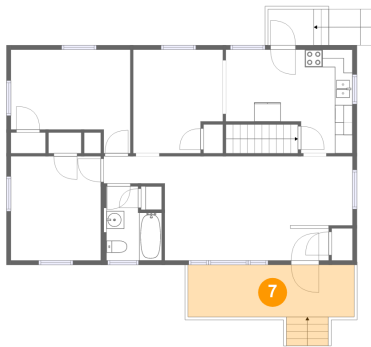
6 Floor 2 - Kitchen



Dimensions: 14'4" x 11'9"
Area: 138 sq. ft
Counted as living area: Yes

Heated: Yes
Finished: Yes
Enclosed: Yes
Contiguous: Yes
Permitted: Yes
Wet space: No
Addition: No
Conversion: No

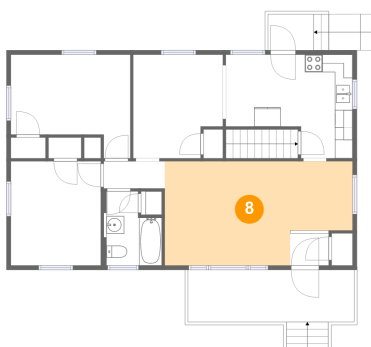
7 Floor 2 - Porch



Dimensions: 18'10" x 5'11"
Area: 127 sq. ft
Counted as living area: No

Heated: No
Finished: Yes
Enclosed: No
Contiguous: Yes
Permitted: Yes
Wet space: No
Addition: No
Conversion: No

8 Floor 2 - Living Room

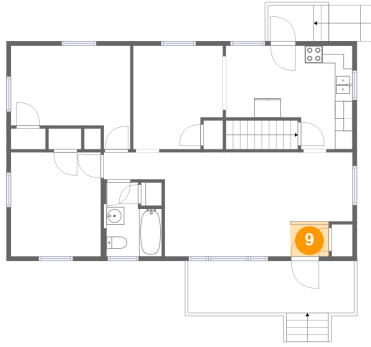


Dimensions: 21'4" x 11'10"
Area: 223 sq. ft
Counted as living area: Yes

Heated: Yes
Finished: Yes
Enclosed: Yes
Contiguous: Yes
Permitted: Yes
Wet space: No
Addition: No
Conversion: No

2152 Ellison Avenue, Alta View, Salem, Salem city,
Virginia, United States, 24153

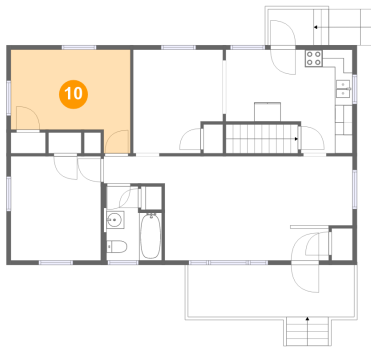
9 Floor 2 - Foyer



Dimensions: 4'4" x 3'8"
Area: 17 sq. ft
Counted as living area: Yes

Heated: Yes
Finished: Yes
Enclosed: Yes
Contiguous: Yes
Permitted: Yes
Wet space: No
Addition: No
Conversion: No

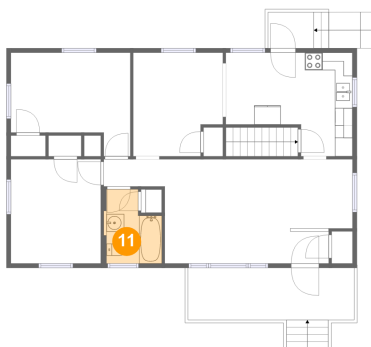
10 Floor 2 - Primary Bedroom



Dimensions: 13'7" x 11'9"
Area: 131 sq. ft
Counted as living area: Yes

Heated: Yes
Finished: Yes
Enclosed: Yes
Contiguous: Yes
Permitted: Yes
Wet space: No
Addition: No
Conversion: No

11 Floor 2 - Bath



Dimensions: 6'3" x 8'5"
Area: 46 sq. ft
Counted as living area: Yes

Heated: Yes
Finished: Yes
Enclosed: Yes
Contiguous: Yes
Permitted: Yes
Wet space: Yes
Addition: No
Conversion: No