

Home report

65 Timberline Drive, Blue Ridge, Botetourt County, Virginia,
United States, 24064




Total Area: 1710 sq. ft

Below Ground: 426 sq. ft, Floor 2: 1284 sq. ft

Excluded: Undefined 21 sq. ft, Utility 235 sq. ft, Garage 529 sq. ft, Porch 135 sq. ft, Deck 215 sq. ft, Walls: 162 sq. ft

Property summary

 **2** Floors

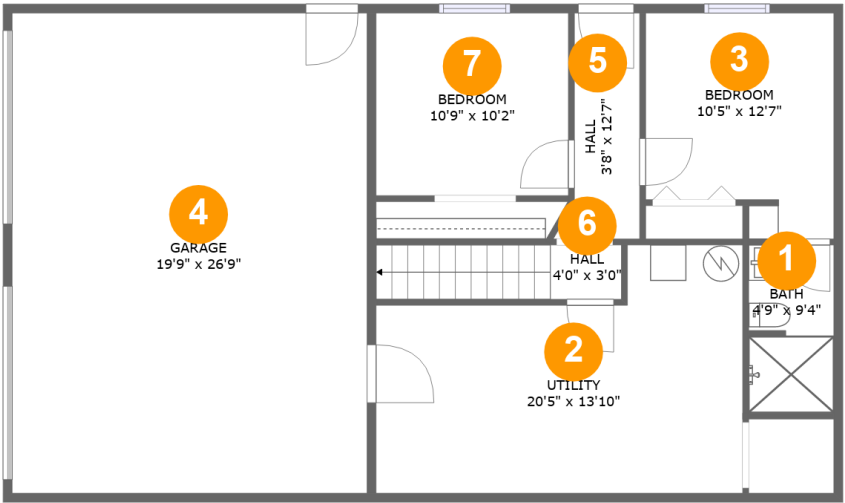
 **5** Bedrooms

 **3** Bathrooms

 **1** Garages

Home report

65 Timberline Drive, Blue Ridge, Botetourt County, Virginia,
United States, 24064



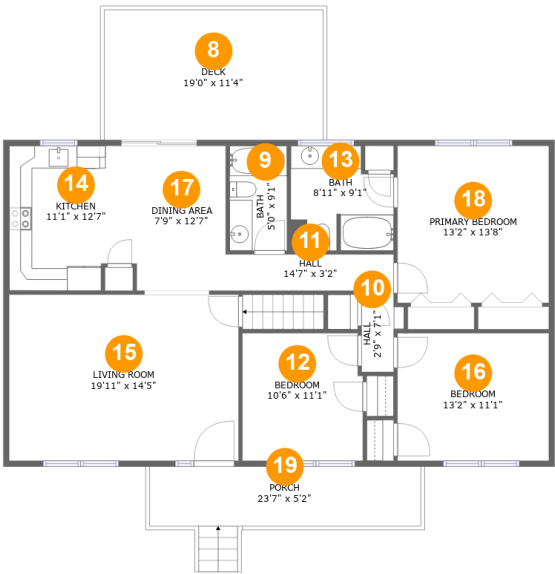
Room dimensions

Floor 1 Below ground Total:426sqft Excluded: 785sqft

#		Max Dimensions	sqft	Included
1	Bath	4'9" x 9'4"	44 sq. ft	Yes
2	Utility	20'5" x 13'10"	235 sq. ft	No
3	Bedroom	10'5" x 12'7"	119 sq. ft	Yes
4	Garage	19'9" x 26'9"	529 sq. ft	No
5	Hall	3'8" x 12'7"	47 sq. ft	Yes
6	Hall	4'0" x 3'0"	41 sq. ft	Yes
7	Bedroom	10'9" x 10'2"	109 sq. ft	Yes

Home report

65 Timberline Drive, Blue Ridge, Botetourt County, Virginia,
United States, 24064



Room dimensions

Floor 2 Total:1284sqft Excluded: 350sqft

#		Max Dimensions	sqft	Included
8	Deck	19'0" x 11'4"	215 sq. ft	No
9	Bath	5'0" x 9'1"	45 sq. ft	Yes
10	Hall	2'9" x 7'1"	21 sq. ft	Yes
11	Hall	14'7" x 3'2"	46 sq. ft	Yes
12	Bedroom	10'6" x 11'1"	114 sq. ft	Yes
13	Bath	8'11" x 9'1"	73 sq. ft	Yes
14	Kitchen	11'1" x 12'7"	132 sq. ft	Yes
15	Living Room	19'11" x 14'5"	288 sq. ft	Yes
16	Bedroom	13'2" x 11'1"	146 sq. ft	Yes
17	Dining Area	7'9" x 12'7"	97 sq. ft	Yes
18	Primary Bedroom	13'2" x 13'8"	180 sq. ft	Yes

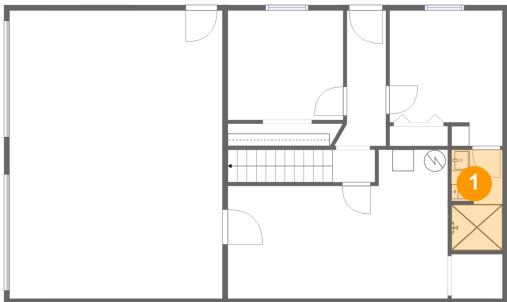
Home report

65 Timberline Drive, Blue Ridge, Botetourt County, Virginia,
United States, 24064

#		Max Dimensions	sqft	Included
19	Porch	23'7" x 5'2"	135 sq. ft	No

65 Timberline Drive, Blue Ridge, Botetourt County, Virginia,
United States, 24064

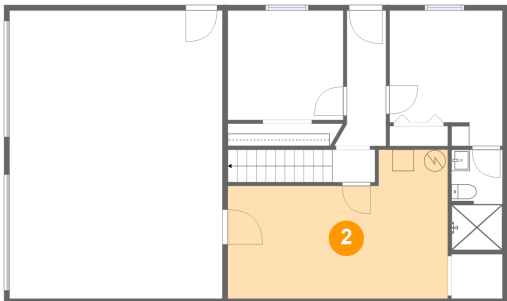
1 Floor 1 - Bath



Max Dimensions: 4'9" x 9'4"
Calculated Area: 44 sq. ft
Included: Yes

Heated: Yes
Finished: Yes
Enclosed: Yes
Contiguous: Yes
Permitted: Yes
Wet space: Yes
Addition: No
Conversion: No

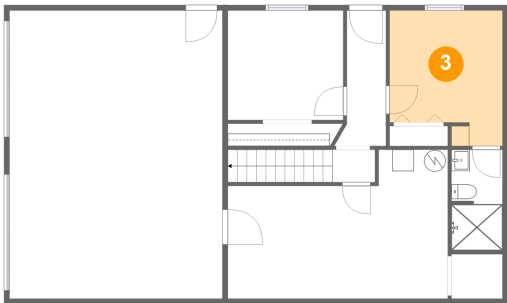
2 Floor 1 - Utility



Max Dimensions: 20'5" x 13'10"
Calculated Area: 235 sq. ft
Included: No

Heated: Yes
Finished: No
Enclosed: Yes
Contiguous: Yes
Permitted: Yes
Wet space: No
Addition: No
Conversion: No

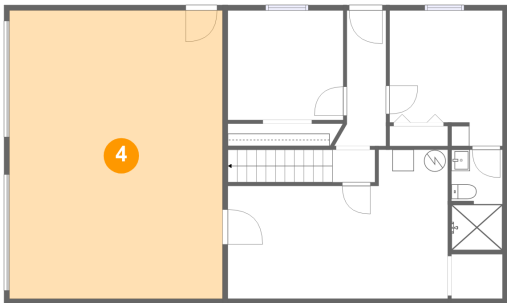
3 Floor 1 - Bedroom



Max Dimensions: 10'5" x 12'7"
Calculated Area: 119 sq. ft
Included: Yes

Heated: Yes
Finished: Yes
Enclosed: Yes
Contiguous: Yes
Permitted: Yes
Wet space: No
Addition: No
Conversion: No

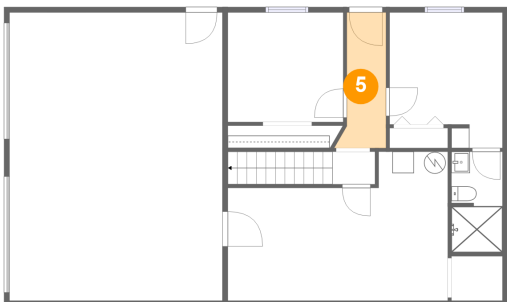
4 Floor 1 - Garage



Max Dimensions: 19'9" x 26'9"
Calculated Area: 529 sq. ft
Included: No

Heated: No
Finished: No
Enclosed: Yes
Contiguous: Yes
Permitted: Yes
Wet space: No
Addition: No
Conversion: No

5 Floor 1 - Hall

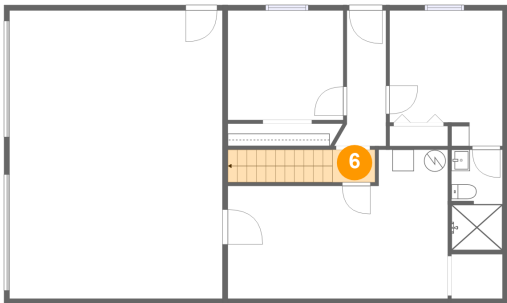


Max Dimensions: 3'8" x 12'7"
Calculated Area: 47 sq. ft
Included: Yes

Heated: Yes
Finished: Yes
Enclosed: Yes
Contiguous: Yes
Permitted: Yes
Wet space: No
Addition: No
Conversion: No

65 Timberline Drive, Blue Ridge, Botetourt County, Virginia,
United States, 24064

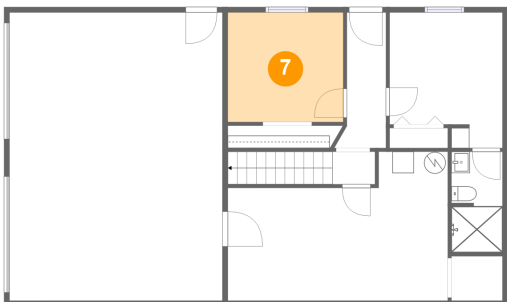
6 Floor 1 - Hall



Max Dimensions: 4'0" x 3'0"
Calculated Area: 41 sq. ft
Included: Yes

Heated: Yes
Finished: Yes
Enclosed: Yes
Contiguous: Yes
Permitted: Yes
Wet space: No
Addition: No
Conversion: No

7 Floor 1 - Bedroom



Max Dimensions: 10'9" x 10'2"
Calculated Area: 109 sq. ft
Included: Yes

Heated: Yes
Finished: Yes
Enclosed: Yes
Contiguous: Yes
Permitted: Yes
Wet space: No
Addition: No
Conversion: No

8 Floor 2 - Deck



Max Dimensions: 19'0" x 11'4"
Calculated Area: 215 sq. ft
Included: No

Heated: No
Finished: Yes
Enclosed: No
Contiguous: No
Permitted: Yes
Wet space: No
Addition: No
Conversion: No

65 Timberline Drive, Blue Ridge, Botetourt County, Virginia,
United States, 24064

9 Floor 2 - Bath



Max Dimensions: 5'0" x 9'1"
Calculated Area: 45 sq. ft
Included: Yes

Heated: Yes
Finished: Yes
Enclosed: Yes
Contiguous: Yes
Permitted: Yes
Wet space: Yes
Addition: No
Conversion: No

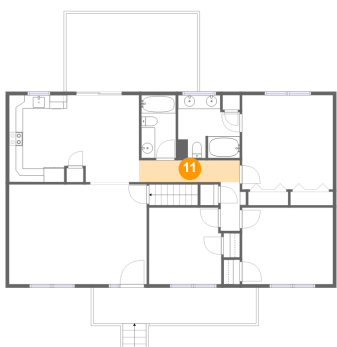
10 Floor 2 - Hall



Max Dimensions: 2'9" x 7'1"
Calculated Area: 21 sq. ft
Included: Yes

Heated: Yes
Finished: Yes
Enclosed: Yes
Contiguous: Yes
Permitted: Yes
Wet space: No
Addition: No
Conversion: No

11 Floor 2 - Hall



Max Dimensions: 14'7" x 3'2"
Calculated Area: 46 sq. ft
Included: Yes

Heated: Yes
Finished: Yes
Enclosed: Yes
Contiguous: Yes
Permitted: Yes
Wet space: No
Addition: No
Conversion: No

12 Floor 2 - Bedroom



Max Dimensions: 10'6" x 11'1"
Calculated Area: 114 sq. ft
Included: Yes

Heated: Yes
Finished: Yes
Enclosed: Yes
Contiguous: Yes
Permitted: Yes
Wet space: No
Addition: No
Conversion: No

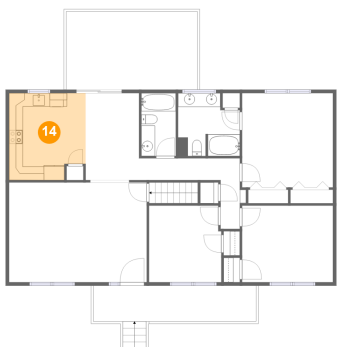
13 Floor 2 - Bath



Max Dimensions: 8'11" x 9'1"
Calculated Area: 73 sq. ft
Included: Yes

Heated: Yes
Finished: Yes
Enclosed: Yes
Contiguous: Yes
Permitted: Yes
Wet space: Yes
Addition: No
Conversion: No

14 Floor 2 - Kitchen



Max Dimensions: 11'1" x 12'7"
Calculated Area: 132 sq. ft
Included: Yes

Heated: Yes
Finished: Yes
Enclosed: Yes
Contiguous: Yes
Permitted: Yes
Wet space: No
Addition: No
Conversion: No

15 Floor 2 - Living Room



Max Dimensions: 19'11" x 14'5"
Calculated Area: 288 sq. ft
Included: Yes

Heated: Yes
Finished: Yes
Enclosed: Yes
Contiguous: Yes
Permitted: Yes
Wet space: No
Addition: No
Conversion: No

16 Floor 2 - Bedroom



Max Dimensions: 13'2" x 11'1"
Calculated Area: 146 sq. ft
Included: Yes

Heated: Yes
Finished: Yes
Enclosed: Yes
Contiguous: Yes
Permitted: Yes
Wet space: No
Addition: No
Conversion: No

17 Floor 2 - Dining Area



Max Dimensions: 7'9" x 12'7"
Calculated Area: 97 sq. ft
Included: Yes

Heated: Yes
Finished: Yes
Enclosed: Yes
Contiguous: Yes
Permitted: Yes
Wet space: No
Addition: No
Conversion: No

18 Floor 2 - Primary Bedroom



Max Dimensions: 13'2" x 13'8"
Calculated Area: 180 sq. ft
Included: Yes

Heated: Yes
Finished: Yes
Enclosed: Yes
Contiguous: Yes
Permitted: Yes
Wet space: No
Addition: No
Conversion: No

19 Floor 2 - Porch



Max Dimensions: 23'7" x 5'2"
Calculated Area: 135 sq. ft
Included: No

Heated: No
Finished: Yes
Enclosed: No
Contiguous: Yes
Permitted: Yes
Wet space: No
Addition: No
Conversion: No