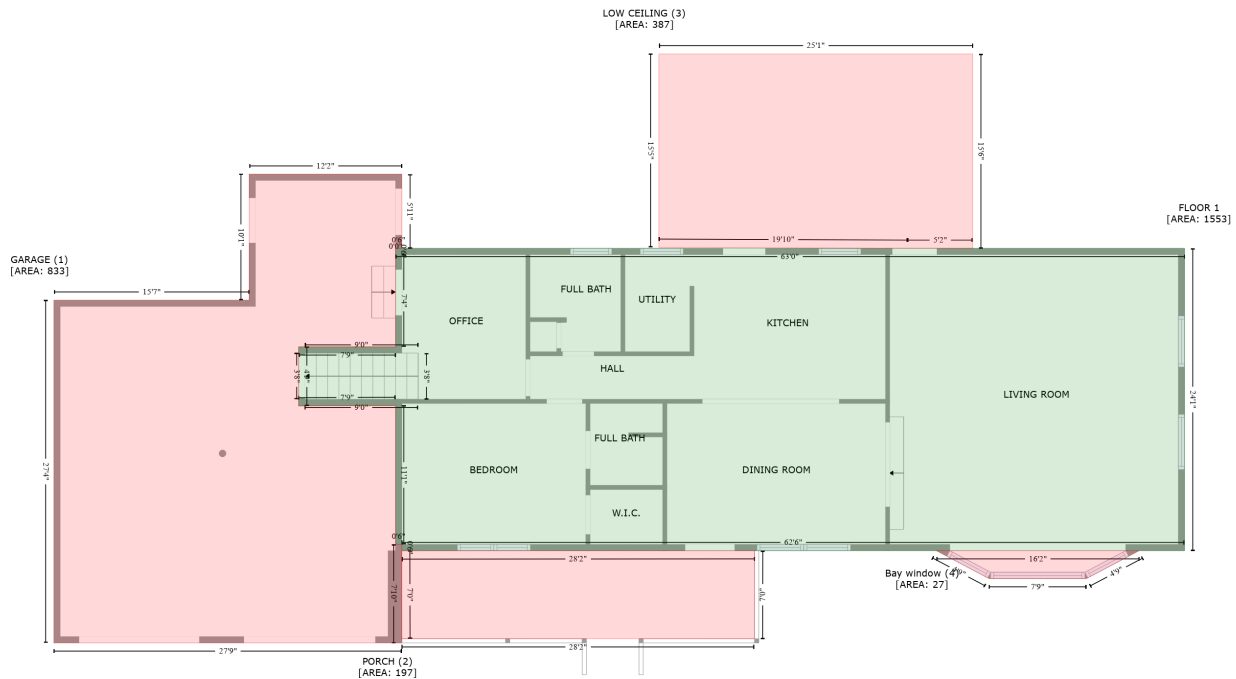


2629 Bristow Cove Road, Bristow Cove, Boaz, Etowah County, Alabama, United States, 35956

Gross Living Area: 2590 sq. ft

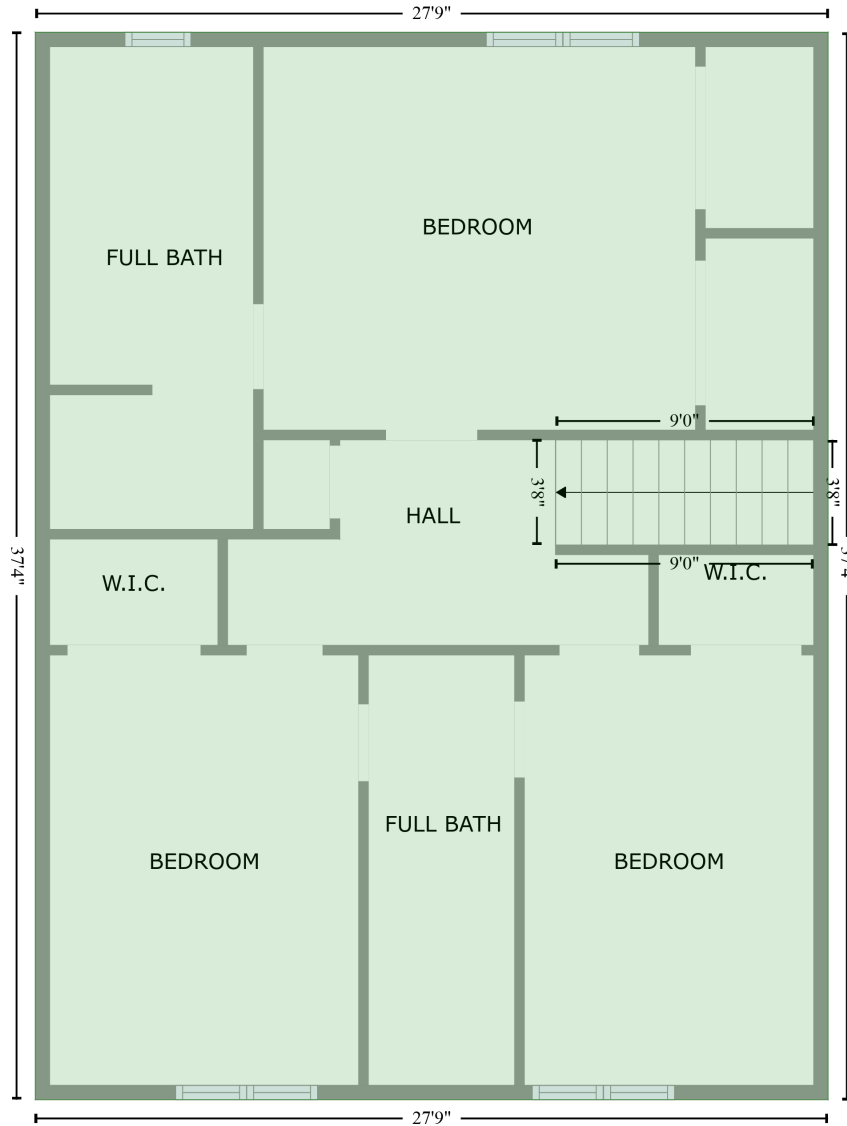


| Space | Area (sq. ft) | Calculation |
|----------------------------------|---------------|--|
| FLOOR 1 (Living area) | 1553 | $-(1086.7 + 1086.7) * (275.5 - 564.7) + (1086.7 + 337.1) * (564.7 - 564.7) + (337.1 + 337.1) * (564.7 - 558.7) + (337.1 + 331.1) * (558.7 - 558.7) + (331.1 + 331.1) * (558.7 - 425.9) + (331.1 + 238.2) * (425.9 - 426.2) + (238.2 + 238.2) * (426.2 - 369.7) + (238.2 + 331.1) * (369.7 - 369.7) + (331.1 + 331.1) * (369.7 - 281.5) + (331.1 + 330.9) * (281.5 - 281.5) + (330.9 + 330.9) * (281.5 - 275.5) + (330.9 + 1086.7) * (275.5 - 275.5) * 0.5 * 0.00694$ |
| GARAGE (Non-living area) | 833 | $-(337.1 + 337.1) * (204.5 - 275.5) + (337.1 + 330.9) * (275.5 - 275.5) + (330.9 + 330.9) * (275.5 - 281.5) + (330.9 + 331.1) * (281.5 - 281.5) + (331.1 + 331.1) * (281.5 - 369.7) + (331.1 + 238.2) * (369.7 - 369.7) + (238.2 + 238.2) * (369.7 - 426.2) + (238.2 + 331.1) * (426.2 - 425.9) + (331.1 + 331.1) * (425.9 - 558.7) + (331.1 + 337.1) * (558.7 - 558.7) + (337.1 + 337.1) * (558.7 - 652.9) + (337.1 + 3.8) * (652.9 - 652.9) + (3.8 + 3.8) * (652.9 - 325.1) + (3.8 + 190.9) * (325.1 - 325.1) + (190.9 + 190.9) * (325.1 - 204.5) + (190.9 + 337.1) * (204.5 - 204.5) * 0.5 * 0.00694$ |
| PORCH (Non-living area) | 197 | $-(674.9 + 674.8) * (564.7 - 648.9) + (674.8 + 337.1) * (648.9 - 648.9) + (337.1 + 336.9) * (648.9 - 564.9) + (336.9 + 674.9) * (564.9 - 564.7) * 0.5 * 0.00694$ |
| LOW CEILING (Non-living area) | 387 | $-(883.8 + 883.8) * (89.5 - 275.5) + (883.8 + 821.6) * (275.5 - 275.5) + (821.6 + 583.2) * (275.5 - 274.5) + (583.2 + 583.2) * (274.5 - 89.5) + (583.2 + 883.8) * (89.5 - 89.5) * 0.5 * 0.00694$ |
| Bay window (Non-living area) | 27 | $-(1043.2 + 992.7) * (564.7 - 591.3) + (992.7 + 899.5) * (591.3 - 591.3) + (899.5 + 849) * (591.3 - 564.7) + (849 + 1043.2) * (564.7 - 564.7) * 0.5 * 0.00694$ |

2629 Bristow Cove Road, Bristow Cove, Boaz, Etowah County, Alabama, United States, 35956

Gross Living Area: 2590 sq. ft

FLOOR 2
[AREA: 1037]



| Space | Area (sq. ft) | Calculation <small>Coordinate Polygon Area Algorithm using inches</small> |
|--------------------------|---------------|--|
| FLOOR 2 (Living area) | 1037 | $-((337.1 + 337.1) * (204.5 - 652.9) + (337.1 + 3.8) * (652.9 - 652.9) + (3.8 + 3.8) * (652.9 - 204.5) + (3.8 + 337.1) * (204.5 - 204.5)) * 0.5 * 0.00694$ |