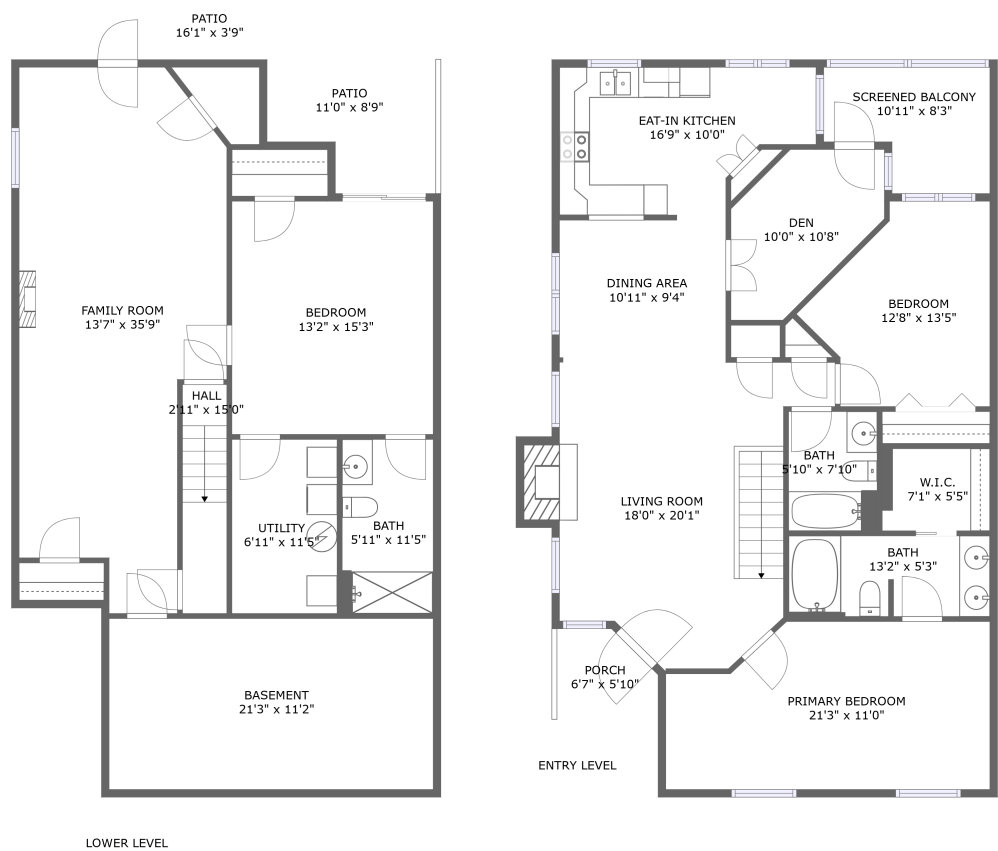


Home report

4670 Mill View Court, Berwick Heights, Cave Spring, Roanoke,
Roanoke County, Virginia, United States, 24018



Total Area: 2065 sq. ft

Floor 1: 886 sq. ft, Floor 2: 1179 sq. ft

Excluded: Basement 237 sq. ft, Patio 142 sq. ft, Screened balcony 75 sq. ft, Porch 34 sq. ft, Fireplace 14 sq. ft, Walls: 158 sq. ft

Property summary

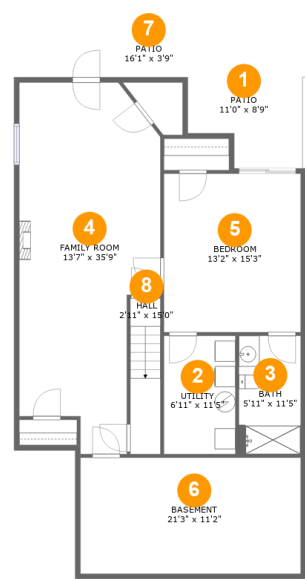
 **2** Floors

 **3** Bedrooms

 **3** Bathrooms

Home report

4670 Mill View Court, Berwick Heights, Cave Spring, Roanoke,
Roanoke County, Virginia, United States, 24018



Room dimensions

Floor 1

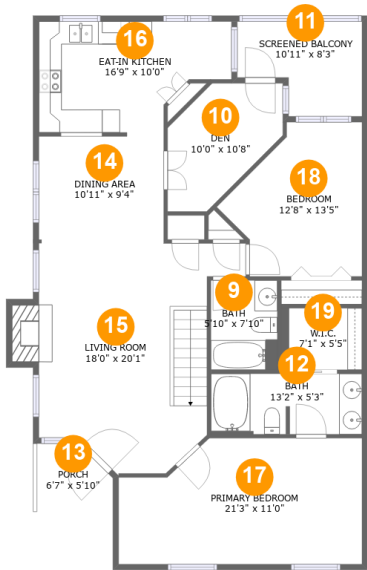
Total:886sqft

Excluded: 379sqft

#		Max Dimensions	sqft	Included
1	Patio	11'0" x 8'9"	82 sq. ft	No
2	Utility	6'11" x 11'5"	78 sq. ft	Yes
3	Bath	5'11" x 11'5"	68 sq. ft	Yes
4	Family Room	13'7" x 35'9"	404 sq. ft	Yes
5	Bedroom	13'2" x 15'3"	201 sq. ft	Yes
6	Basement	21'3" x 11'2"	237 sq. ft	No
7	Patio	16'1" x 3'9"	60 sq. ft	No
8	Hall	2'11" x 15'0"	43 sq. ft	Yes

Home report

4670 Mill View Court, Berwick Heights, Cave Spring, Roanoke,
Roanoke County, Virginia, United States, 24018



Room dimensions

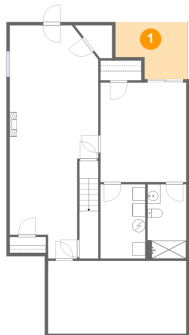
Floor 2

Total:1179sqft Excluded: 123sqft

#		Max Dimensions	sqft	Included
9	Bath	5'10" x 7'10"	45 sq. ft	Yes
10	Den	10'0" x 10'8"	83 sq. ft	Yes
11	Screened Balcony	10'11" x 8'3"	75 sq. ft	No
12	Bath	13'2" x 5'3"	69 sq. ft	Yes
13	Porch	6'7" x 5'10"	34 sq. ft	No
14	Dining Area	10'11" x 9'4"	101 sq. ft	Yes
15	Living Room	18'0" x 20'1"	293 sq. ft	Yes
16	Eat-in Kitchen	16'9" x 10'0"	141 sq. ft	Yes
17	Primary Bedroom	21'3" x 11'0"	212 sq. ft	Yes
18	Bedroom	12'8" x 13'5"	131 sq. ft	Yes
19	W.I.C.	7'1" x 5'5"	38 sq. ft	Yes

4670 Mill View Court, Berwick Heights, Cave Spring, Roanoke,
Roanoke County, Virginia, United States, 24018

1 Floor 1 - Patio



Max Dimensions: 11'0" x 8'9"
Calculated Area: 82 sq. ft
Included: No

Heated: No
Finished: Yes
Enclosed: No
Contiguous: Yes
Permitted: Yes
Wet space: No
Addition: No
Conversion: No

2 Floor 1 - Utility

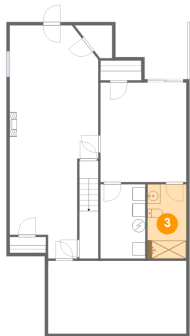


Max Dimensions: 6'11" x 11'5"
Calculated Area: 78 sq. ft
Included: Yes

Heated: Yes
Finished: Yes
Enclosed: Yes
Contiguous: Yes
Permitted: Yes
Wet space: No
Addition: No
Conversion: No

4670 Mill View Court, Berwick Heights, Cave Spring, Roanoke,
Roanoke County, Virginia, United States, 24018

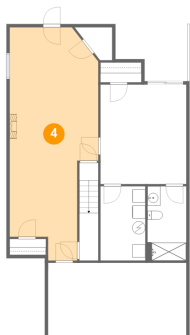
3 Floor 1 - Bath



Max Dimensions: 5'11" x 11'5"
Calculated Area: 68 sq. ft
Included: Yes

Heated: Yes
Finished: Yes
Enclosed: Yes
Contiguous: Yes
Permitted: Yes
Wet space: Yes
Addition: No
Conversion: No

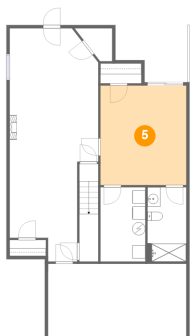
4 Floor 1 - Family Room



Max Dimensions: 13'7" x 35'9"
Calculated Area: 404 sq. ft
Included: Yes

Heated: Yes
Finished: Yes
Enclosed: Yes
Contiguous: Yes
Permitted: Yes
Wet space: No
Addition: No
Conversion: No

5 Floor 1 - Bedroom

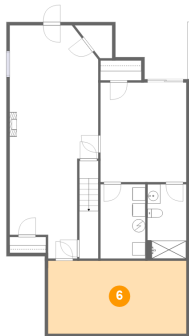


Max Dimensions: 13'2" x 15'3"
Calculated Area: 201 sq. ft
Included: Yes

Heated: Yes
Finished: Yes
Enclosed: Yes
Contiguous: Yes
Permitted: Yes
Wet space: No
Addition: No
Conversion: No

4670 Mill View Court, Berwick Heights, Cave Spring, Roanoke,
Roanoke County, Virginia, United States, 24018

6 Floor 1 - Basement



Max Dimensions: 21'3" x 11'2"
Calculated Area: 237 sq. ft
Included: No

Heated: Yes
Finished: No
Enclosed: Yes
Contiguous: Yes
Permitted: Yes
Wet space: No
Addition: No
Conversion: No

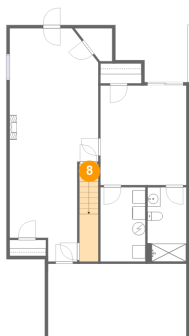
7 Floor 1 - Patio



Max Dimensions: 16'1" x 3'9"
Calculated Area: 60 sq. ft
Included: No

Heated: No
Finished: Yes
Enclosed: No
Contiguous: Yes
Permitted: Yes
Wet space: No
Addition: No
Conversion: No

8 Floor 1 - Hall

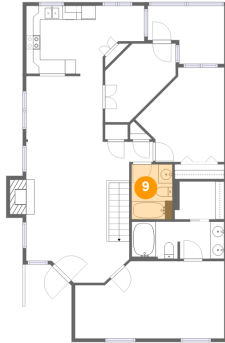


Max Dimensions: 2'11" x 15'0"
Calculated Area: 43 sq. ft
Included: Yes

Heated: Yes
Finished: Yes
Enclosed: Yes
Contiguous: Yes
Permitted: Yes
Wet space: No
Addition: No
Conversion: No

4670 Mill View Court, Berwick Heights, Cave Spring, Roanoke,
Roanoke County, Virginia, United States, 24018

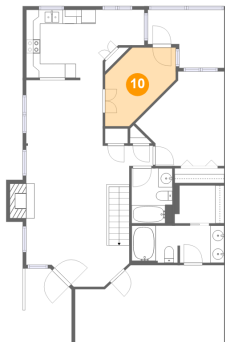
9 Floor 2 - Bath



Max Dimensions: 5'10" x 7'10"
Calculated Area: 45 sq. ft
Included: Yes

Heated: Yes
Finished: Yes
Enclosed: Yes
Contiguous: Yes
Permitted: Yes
Wet space: Yes
Addition: No
Conversion: No

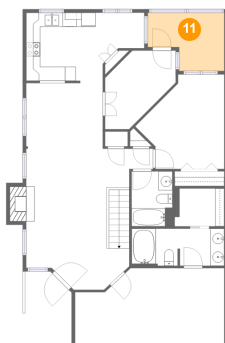
10 Floor 2 - Den



Max Dimensions: 10'0" x 10'8"
Calculated Area: 83 sq. ft
Included: Yes

Heated: Yes
Finished: Yes
Enclosed: Yes
Contiguous: Yes
Permitted: Yes
Wet space: No
Addition: No
Conversion: No

11 Floor 2 - Screened Balcony

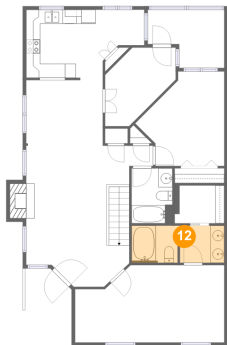


Max Dimensions: 10'11" x 8'3"
Calculated Area: 75 sq. ft
Included: No

Heated: No
Finished: Yes
Enclosed: No
Contiguous: Yes
Permitted: Yes
Wet space: No
Addition: No
Conversion: No

4670 Mill View Court, Berwick Heights, Cave Spring, Roanoke,
Roanoke County, Virginia, United States, 24018

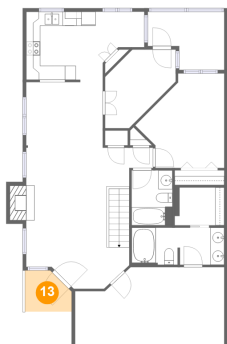
12 Floor 2 - Bath



Max Dimensions: 13'2" x 5'3"
Calculated Area: 69 sq. ft
Included: Yes

Heated: Yes
Finished: Yes
Enclosed: Yes
Contiguous: Yes
Permitted: Yes
Wet space: Yes
Addition: No
Conversion: No

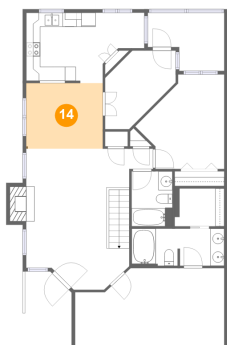
13 Floor 2 - Porch



Max Dimensions: 6'7" x 5'10"
Calculated Area: 34 sq. ft
Included: No

Heated: No
Finished: Yes
Enclosed: No
Contiguous: Yes
Permitted: Yes
Wet space: No
Addition: No
Conversion: No

14 Floor 2 - Dining Area

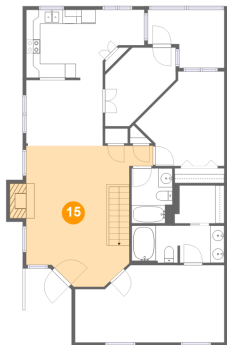


Max Dimensions: 10'11" x 9'4"
Calculated Area: 101 sq. ft
Included: Yes

Heated: Yes
Finished: Yes
Enclosed: Yes
Contiguous: Yes
Permitted: Yes
Wet space: No
Addition: No
Conversion: No

4670 Mill View Court, Berwick Heights, Cave Spring, Roanoke,
Roanoke County, Virginia, United States, 24018

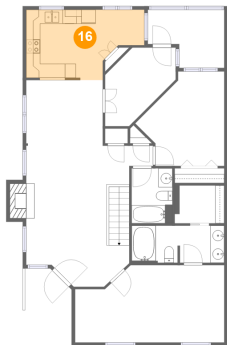
15 Floor 2 - Living Room



Max Dimensions: 18'0" x 20'1"
Calculated Area: 293 sq. ft
Included: Yes

Heated: Yes
Finished: Yes
Enclosed: Yes
Contiguous: Yes
Permitted: Yes
Wet space: No
Addition: No
Conversion: No

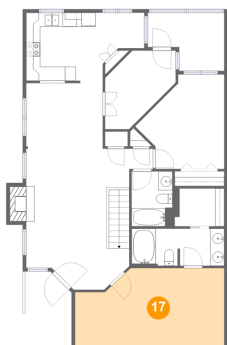
16 Floor 2 - Eat-in Kitchen



Max Dimensions: 16'9" x 10'0"
Calculated Area: 141 sq. ft
Included: Yes

Heated: Yes
Finished: Yes
Enclosed: Yes
Contiguous: Yes
Permitted: Yes
Wet space: No
Addition: No
Conversion: No

17 Floor 2 - Primary Bedroom

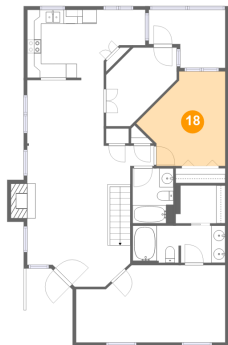


Max Dimensions: 21'3" x 11'0"
Calculated Area: 212 sq. ft
Included: Yes

Heated: Yes
Finished: Yes
Enclosed: Yes
Contiguous: Yes
Permitted: Yes
Wet space: No
Addition: No
Conversion: No

4670 Mill View Court, Berwick Heights, Cave Spring, Roanoke,
Roanoke County, Virginia, United States, 24018

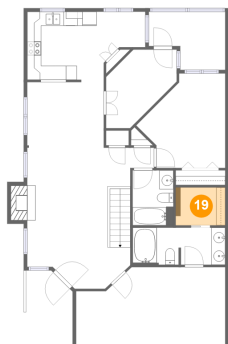
18 Floor 2 - Bedroom



Max Dimensions: 12'8" x 13'5"
Calculated Area: 131 sq. ft
Included: Yes

Heated: Yes
Finished: Yes
Enclosed: Yes
Contiguous: Yes
Permitted: Yes
Wet space: No
Addition: No
Conversion: No

19 Floor 2 - W.I.C.



Max Dimensions: 7'1" x 5'5"
Calculated Area: 38 sq. ft
Included: Yes

Heated: Yes
Finished: Yes
Enclosed: Yes
Contiguous: Yes
Permitted: Yes
Wet space: No
Addition: No
Conversion: No