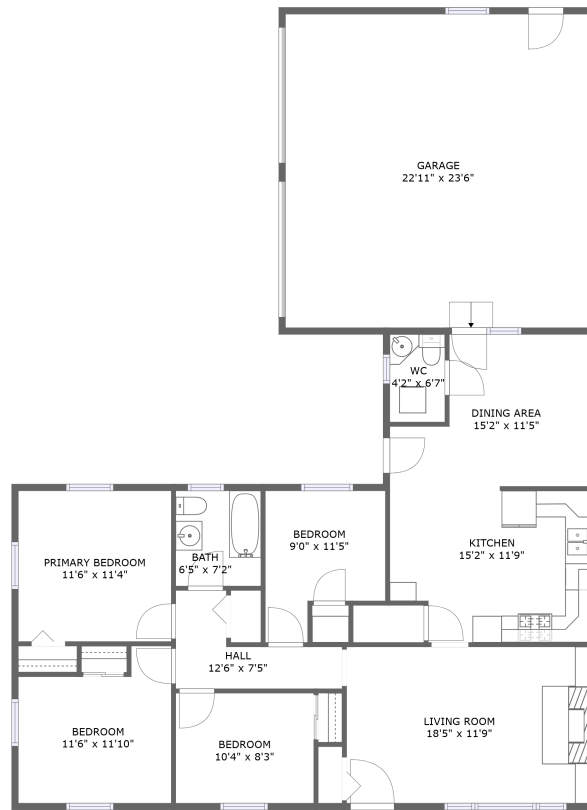


## Home Data Report

**86 Prospect Hill Road, Saint Albans, Franklin  
County, Vermont, United States, 05478**



FLOOR 1

## Property Summary



**1** floors



**4** bedrooms



**1** bathrooms



**1,848** total sqft



**2** garages



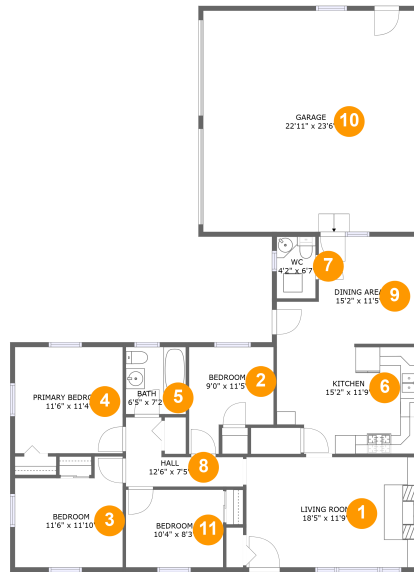
**1,267** Gross Living  
Area sqft

Scan captured on Wed, 15 May 2024 19:27:02 GMT

Information is calculated by CubiCasa technology; deemed highly reliable but not guaranteed.

## Home Data Report

# 86 Prospect Hill Road, Saint Albans, Franklin County, Vermont, United States, 05478



## Room Dimensions

Floor 1

Total sqft: 1848

Living area: 1267

#	Room name	Dimensions	Area (sqft)	Counted as Living Area
1	Living Room	18'5" x 11'9"	216 sq. ft	Yes
2	Bedroom	9'0" x 11'5"	84 sq. ft	Yes
3	Bedroom	11'6" x 11'10"	116 sq. ft	Yes
4	Primary Bedroom	11'6" x 11'4"	130 sq. ft	Yes
5	Bath	6'5" x 7'2"	46 sq. ft	Yes
6	Kitchen	15'2" x 11'9"	166 sq. ft	Yes
7	Wc	4'2" x 6'7"	27 sq. ft	Yes
8	Hall	12'6" x 7'5"	55 sq. ft	Yes
9	Dining Area	15'2" x 11'5"	142 sq. ft	Yes
10	Garage	22'11" x 23'6"	541 sq. ft	No
11	Bedroom	10'4" x 8'3"	86 sq. ft	Yes

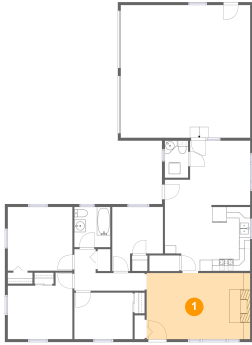
Scan captured on Wed, 15 May 2024 19:27:02 GMT

Information is calculated by technology; deemed highly reliable but not guaranteed.

# 86 Prospect Hill Road, Saint Albans, Franklin County, Vermont, United States, 05478

## 1 Floor 1 - Living Room

---



Dimensions: 18'5" x 11'9"  
Area: 216 sq. ft  
Counted as Living Area:  
Yes

Heated: Yes  
Finished: Yes  
Enclosed: Yes  
Contiguous:  
Yes  
Permitted: Yes  
Wet Space: No  
Addition: No  
Conversion: No

## 2 Floor 1 - Bedroom

---



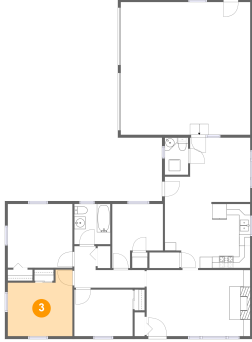
Dimensions: 9'0" x 11'5"  
Area: 84 sq. ft  
Counted as Living Area:  
Yes

Heated: Yes  
Finished: Yes  
Enclosed: Yes  
Contiguous:  
Yes  
Permitted: Yes  
Wet Space: No  
Addition: No  
Conversion: No

**86 Prospect Hill Road, Saint Albans, Franklin County, Vermont, United States, 05478**

**3 Floor 1 - Bedroom**

---

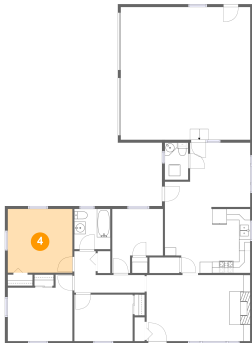


Dimensions: 11'6" x 11'10"  
Area: 116 sq. ft  
Counted as Living Area:  
Yes

Heated: Yes  
Finished: Yes  
Enclosed: Yes  
Contiguous:  
Yes  
Permitted: Yes  
Wet Space: No  
Addition: No  
Conversion: No

**4 Floor 1 - Primary Bedroom**

---

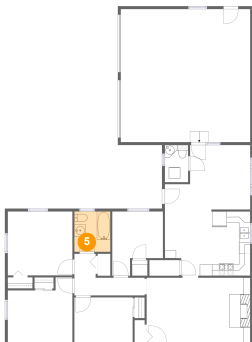


Dimensions: 11'6" x 11'4"  
Area: 130 sq. ft  
Counted as Living Area:  
Yes

Heated: Yes  
Finished: Yes  
Enclosed: Yes  
Contiguous:  
Yes  
Permitted: Yes  
Wet Space: No  
Addition: No  
Conversion: No

**5 Floor 1 - Bath**

---



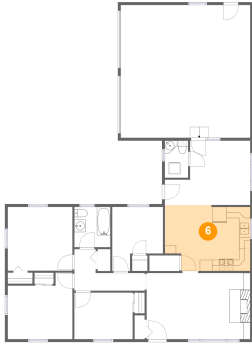
Dimensions: 6'5" x 7'2"  
Area: 46 sq. ft  
Counted as Living Area:  
Yes

Heated: Yes  
Finished: Yes  
Enclosed: Yes  
Contiguous:  
Yes  
Permitted: Yes  
Wet Space: Yes  
Addition: No  
Conversion: No

**86 Prospect Hill Road, Saint Albans, Franklin  
County, Vermont, United States, 05478**

**6 Floor 1 - Kitchen**

---

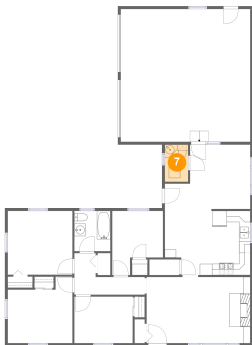


Dimensions: 15'2" x 11'9"  
Area: 166 sq. ft  
Counted as Living Area:  
Yes

Heated: Yes  
Finished: Yes  
Enclosed: Yes  
Contiguous:  
Yes  
Permitted: Yes  
Wet Space: No  
Addition: No  
Conversion: No

**7 Floor 1 - Wc**

---



Dimensions: 4'2" x 6'7"  
Area: 27 sq. ft  
Counted as Living Area:  
Yes

Heated: Yes  
Finished: Yes  
Enclosed: Yes  
Contiguous:  
Yes  
Permitted: Yes  
Wet Space: Yes  
Addition: No  
Conversion: No

**8 Floor 1 - Hall**

---



Dimensions: 12'6" x 7'5"  
Area: 55 sq. ft  
Counted as Living Area:  
Yes

Heated: Yes  
Finished: Yes  
Enclosed: Yes  
Contiguous:  
Yes  
Permitted: Yes  
Wet Space: No  
Addition: No  
Conversion: No

**86 Prospect Hill Road, Saint Albans, Franklin County, Vermont, United States, 05478**

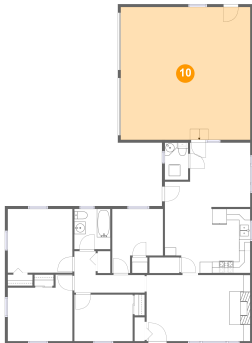
**9 Floor 1 - Dining Area**



Dimensions: 15'2" x 11'5"  
Area: 142 sq. ft  
Counted as Living Area:  
Yes

Heated: Yes  
Finished: Yes  
Enclosed: Yes  
Contiguous:  
Yes  
Permitted: Yes  
Wet Space: No  
Addition: No  
Conversion: No

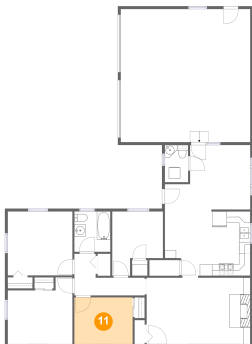
**10 Floor 1 - Garage**



Dimensions: 22'11" x 23'6"  
Area: 541 sq. ft  
Counted as Living Area: No

Heated: No  
Finished: No  
Enclosed: Yes  
Contiguous: Yes  
Permitted: Yes  
Wet Space: No  
Addition: No  
Conversion: No

**11 Floor 1 - Bedroom**



Dimensions: 10'4" x 8'3"  
Area: 86 sq. ft  
Counted as Living Area:  
Yes

Heated: Yes  
Finished: Yes  
Enclosed: Yes  
Contiguous:  
Yes  
Permitted: Yes  
Wet Space: No  
Addition: No  
Conversion: No