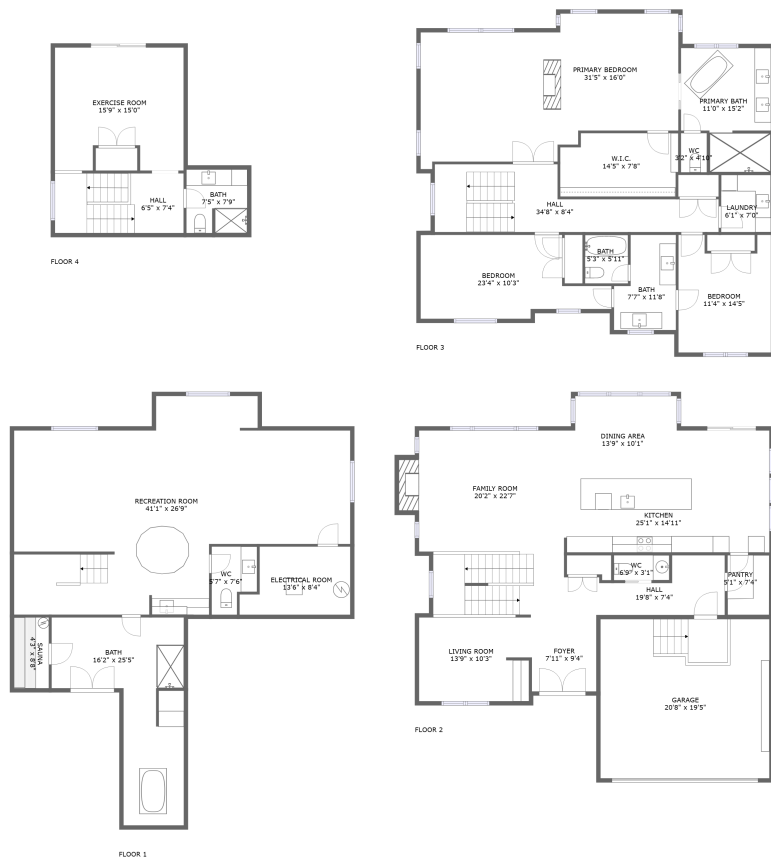



# 845 Companion Crescent, Manotick, Kars, Ontario, Canada, K0A 2E0, 845 Companion Cres




## Property summary


 **1** Garages

 **3** Bedrooms

 **3** Bathrooms

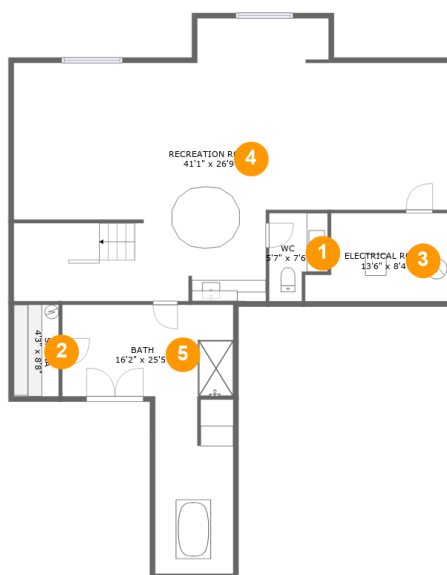
 **3** Half baths

 **4** Floors

 **4,667** Gross living area sqft

 **5,222** Total sqft

# 845 Companion Crescent, Manotick, Kars, Ontario, Canada, K0A 2E0, 845 Companion Cres



## Room dimensions

Floor 1

Total sqft: 1381 Living area: 1271

#		Dimensions	sqft	Counted as living area
1	WC	5'7" x 7'6"	39 sq. ft	Yes
2	Sauna	4'3" x 8'8"	37 sq. ft	Yes
3	Electrical Room	13'6" x 8'4"	98 sq. ft	No
4	Recreation Room	41'1" x 26'9"	822 sq. ft	Yes
5	Bath	16'2" x 25'5"	261 sq. ft	Yes

# 845 Companion Crescent, Manotick, Kars, Ontario, Canada, K0A 2E0, 845 Companion Cres



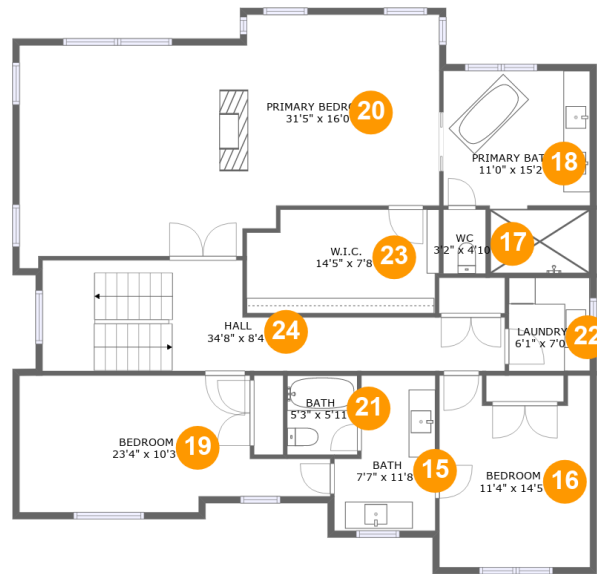
## Room dimensions

Floor 2

Total sqft: 1749 Living area: 1304

#		Dimensions	sqft	Counted as living area
6	Foyer	7'11" x 9'4"	74 sq. ft	Yes
7	Pantry	5'1" x 7'4"	37 sq. ft	Yes
8	WC	6'9" x 3'1"	21 sq. ft	Yes
9	Kitchen	25'1" x 14'11"	292 sq. ft	Yes
10	Hall	19'8" x 7'4"	102 sq. ft	Yes
11	Family Room	20'2" x 22'7"	402 sq. ft	Yes
12	Living Room	13'9" x 10'3"	142 sq. ft	Yes
13	Dining Area	13'9" x 10'1"	133 sq. ft	Yes
14	Garage	20'8" x 19'5"	401 sq. ft	No

**845 Companion Crescent, Manotick, Kars, Ontario,  
Canada, K0A 2E0, 845 Companion Cres**



**Room dimensions**

Floor 3

Total sqft: 1628

Living area: 1628

#		Dimensions	sqft	Counted as living area
15	Bath	7'7" x 11'8"	75 sq. ft	Yes
16	Bedroom	11'4" x 14'5"	148 sq. ft	Yes
17	WC	3'2" x 4'10"	15 sq. ft	Yes
18	Primary Bath	11'0" x 15'2"	148 sq. ft	Yes
19	Bedroom	23'4" x 10'3"	190 sq. ft	Yes
20	Primary Bedroom	31'5" x 16'0"	480 sq. ft	Yes
21	Bath	5'3" x 5'11"	31 sq. ft	Yes
22	Laundry	6'1" x 7'0"	43 sq. ft	Yes
23	W.I.C.	14'5" x 7'8"	107 sq. ft	Yes
24	Hall	34'8" x 8'4"	204 sq. ft	Yes

845 Companion Crescent, Manotick, Kars, Ontario, Canada, K0A 2E0, 845 Companion Cres



## Room dimensions

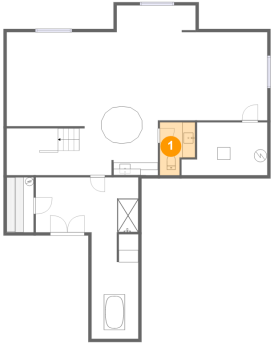
Floor 4

Total sqft: 464 Living area: 464

#		Dimensions	sqft	Counted as living area
25	Bath	7'5" x 7'9"	57 sq. ft	Yes
26	Exercise Room	15'9" x 15'0"	220 sq. ft	Yes
27	Hall	6'5" x 7'4"	115 sq. ft	Yes

**845 Companion Crescent, Manotick, Kars, Ontario,  
Canada, K0A 2E0, 845 Companion Cres**

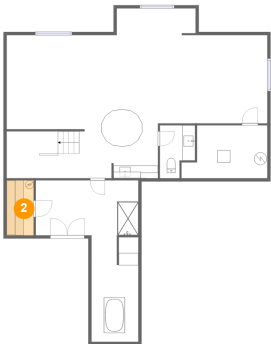
**1 Floor 1 - WC**



**Dimensions:** 5'7" x 7'6"  
**Area:** 39 sq. ft  
**Counted as living area:** Yes

**Heated:** Yes  
**Finished:** Yes  
**Enclosed:** Yes  
**Contiguous:** Yes  
**Permitted:** Yes  
**Wet space:** Yes  
**Addition:** No  
**Conversion:** No

**2 Floor 1 - Sauna**

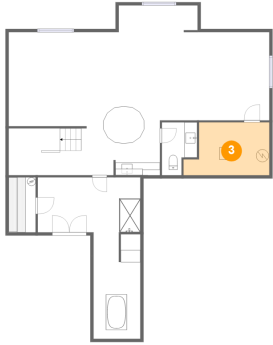


**Dimensions:** 4'3" x 8'8"  
**Area:** 37 sq. ft  
**Counted as living area:** Yes

**Heated:** Yes  
**Finished:** Yes  
**Enclosed:** Yes  
**Contiguous:** Yes  
**Permitted:** Yes  
**Wet space:** No  
**Addition:** No  
**Conversion:** No

**845 Companion Crescent, Manotick, Kars, Ontario,  
Canada, K0A 2E0, 845 Companion Cres**

### 3 Floor 1 - Electrical Room



Dimensions: 13'6" x 8'4"  
Area: 98 sq. ft  
Counted as living area: No

Heated: No  
Finished: No  
Enclosed: Yes  
Contiguous: Yes  
Permitted: Yes  
Wet space: No  
Addition: No  
Conversion: No

### 4 Floor 1 - Recreation Room



Dimensions: 41'1" x 26'9"  
Area: 822 sq. ft  
Counted as living area: Yes

Heated: Yes  
Finished: Yes  
Enclosed: Yes  
Contiguous: Yes  
Permitted: Yes  
Wet space: No  
Addition: No  
Conversion: No

### 5 Floor 1 - Bath



Dimensions: 16'2" x 25'5"  
Area: 261 sq. ft  
Counted as living area: Yes

Heated: Yes  
Finished: Yes  
Enclosed: Yes  
Contiguous: Yes  
Permitted: Yes  
Wet space: Yes  
Addition: No  
Conversion: No

# 845 Companion Crescent, Manotick, Kars, Ontario, Canada, K0A 2E0, 845 Companion Cres

## 6 Floor 2 - Foyer



Dimensions: 7'11" x 9'4"  
Area: 74 sq. ft  
Counted as living area: Yes

Heated: Yes  
Finished: Yes  
Enclosed: Yes  
Contiguous: Yes  
Permitted: Yes  
Wet space: No  
Addition: No  
Conversion: No

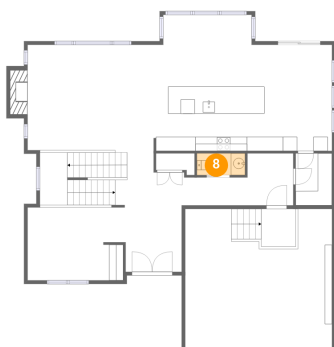
## 7 Floor 2 - Pantry



Dimensions: 5'1" x 7'4"  
Area: 37 sq. ft  
Counted as living area: Yes

Heated: Yes  
Finished: Yes  
Enclosed: Yes  
Contiguous: Yes  
Permitted: Yes  
Wet space: No  
Addition: No  
Conversion: No

## 8 Floor 2 - WC



Dimensions: 6'9" x 3'1"  
Area: 21 sq. ft  
Counted as living area: Yes

Heated: Yes  
Finished: Yes  
Enclosed: Yes  
Contiguous: Yes  
Permitted: Yes  
Wet space: Yes  
Addition: No  
Conversion: No



**845 Companion Crescent, Manotick, Kars, Ontario,  
Canada, K0A 2E0, 845 Companion Cres**

**9 Floor 2 - Kitchen**



**Dimensions:** 25'1" x 14'11"  
**Area:** 292 sq. ft  
**Counted as living area:** Yes

**Heated:** Yes  
**Finished:** Yes  
**Enclosed:** Yes  
**Contiguous:** Yes  
**Permitted:** Yes  
**Wet space:** No  
**Addition:** No  
**Conversion:** No

**10 Floor 2 - Hall**



**Dimensions:** 19'8" x 7'4"  
**Area:** 102 sq. ft  
**Counted as living area:** Yes

**Heated:** Yes  
**Finished:** Yes  
**Enclosed:** Yes  
**Contiguous:** Yes  
**Permitted:** Yes  
**Wet space:** No  
**Addition:** No  
**Conversion:** No

**11 Floor 2 - Family Room**



**Dimensions:** 20'2" x 22'7"  
**Area:** 402 sq. ft  
**Counted as living area:** Yes

**Heated:** Yes  
**Finished:** Yes  
**Enclosed:** Yes  
**Contiguous:** Yes  
**Permitted:** Yes  
**Wet space:** No  
**Addition:** No  
**Conversion:** No

**845 Companion Crescent, Manotick, Kars, Ontario,  
Canada, K0A 2E0, 845 Companion Cres**

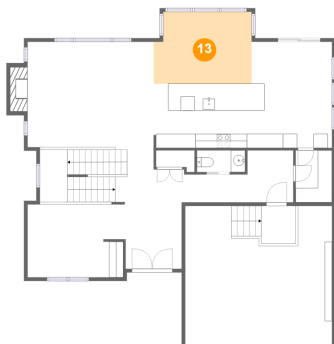
**12 Floor 2 - Living Room**



**Dimensions:** 13'9" x 10'3"  
**Area:** 142 sq. ft  
**Counted as living area:** Yes

**Heated:** Yes  
**Finished:** Yes  
**Enclosed:** Yes  
**Contiguous:** Yes  
**Permitted:** Yes  
**Wet space:** No  
**Addition:** No  
**Conversion:** No

**13 Floor 2 - Dining Area**



**Dimensions:** 13'9" x 10'1"  
**Area:** 133 sq. ft  
**Counted as living area:** Yes

**Heated:** Yes  
**Finished:** Yes  
**Enclosed:** Yes  
**Contiguous:** Yes  
**Permitted:** Yes  
**Wet space:** No  
**Addition:** No  
**Conversion:** No

**14 Floor 2 - Garage**



**Dimensions:** 20'8" x 19'5"  
**Area:** 401 sq. ft  
**Counted as living area:** No

**Heated:** No  
**Finished:** No  
**Enclosed:** Yes  
**Contiguous:** Yes  
**Permitted:** Yes  
**Wet space:** No  
**Addition:** No  
**Conversion:** No

# 845 Companion Crescent, Manotick, Kars, Ontario, Canada, K0A 2E0, 845 Companion Cres

## 15 Floor 3 - Bath



Dimensions: 7'7" x 11'8"  
Area: 75 sq. ft  
Counted as living area: Yes

Heated: Yes  
Finished: Yes  
Enclosed: Yes  
Contiguous: Yes  
Permitted: Yes  
Wet space: Yes  
Addition: No  
Conversion: No

## 16 Floor 3 - Bedroom



Dimensions: 11'4" x 14'5"  
Area: 148 sq. ft  
Counted as living area: Yes

Heated: Yes  
Finished: Yes  
Enclosed: Yes  
Contiguous: Yes  
Permitted: Yes  
Wet space: No  
Addition: No  
Conversion: No

## 17 Floor 3 - WC



Dimensions: 3'2" x 4'10"  
Area: 15 sq. ft  
Counted as living area: Yes

Heated: Yes  
Finished: Yes  
Enclosed: Yes  
Contiguous: Yes  
Permitted: Yes  
Wet space: Yes  
Addition: No  
Conversion: No

**845 Companion Crescent, Manotick, Kars, Ontario,  
Canada, K0A 2E0, 845 Companion Cres**

**18 Floor 3 - Primary Bath**



**Dimensions:** 11'0" x 15'2"  
**Area:** 148 sq. ft  
**Counted as living area:** Yes

**Heated:** Yes  
**Finished:** Yes  
**Enclosed:** Yes  
**Contiguous:** Yes  
**Permitted:** Yes  
**Wet space:** Yes  
**Addition:** No  
**Conversion:** No

**19 Floor 3 - Bedroom**



**Dimensions:** 23'4" x 10'3"  
**Area:** 190 sq. ft  
**Counted as living area:** Yes

**Heated:** Yes  
**Finished:** Yes  
**Enclosed:** Yes  
**Contiguous:** Yes  
**Permitted:** Yes  
**Wet space:** No  
**Addition:** No  
**Conversion:** No

**20 Floor 3 - Primary Bedroom**



**Dimensions:** 31'5" x 16'0"  
**Area:** 480 sq. ft  
**Counted as living area:** Yes

**Heated:** Yes  
**Finished:** Yes  
**Enclosed:** Yes  
**Contiguous:** Yes  
**Permitted:** Yes  
**Wet space:** No  
**Addition:** No  
**Conversion:** No

# 845 Companion Crescent, Manotick, Kars, Ontario, Canada, K0A 2E0, 845 Companion Cres

## 21 Floor 3 - Bath



Dimensions: 5'3" x 5'11"  
Area: 31 sq. ft  
Counted as living area: Yes

Heated: Yes  
Finished: Yes  
Enclosed: Yes  
Contiguous: Yes  
Permitted: Yes  
Wet space: Yes  
Addition: No  
Conversion: No

## 22 Floor 3 - Laundry



Dimensions: 6'1" x 7'0"  
Area: 43 sq. ft  
Counted as living area: Yes

Heated: Yes  
Finished: Yes  
Enclosed: Yes  
Contiguous: Yes  
Permitted: Yes  
Wet space: No  
Addition: No  
Conversion: No

## 23 Floor 3 - W.I.C.

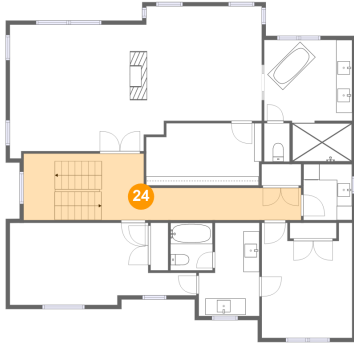


Dimensions: 14'5" x 7'8"  
Area: 107 sq. ft  
Counted as living area: Yes

Heated: Yes  
Finished: Yes  
Enclosed: Yes  
Contiguous: Yes  
Permitted: Yes  
Wet space: No  
Addition: No  
Conversion: No

**845 Companion Crescent, Manotick, Kars, Ontario,  
Canada, K0A 2E0, 845 Companion Cres**

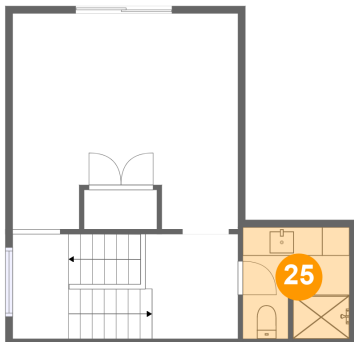
**24 Floor 3 - Hall**



Dimensions: 34'8" x 8'4"  
Area: 204 sq. ft  
Counted as living area: Yes

Heated: Yes  
Finished: Yes  
Enclosed: Yes  
Contiguous: Yes  
Permitted: Yes  
Wet space: No  
Addition: No  
Conversion: No

**25 Floor 4 - Bath**



Dimensions: 7'5" x 7'9"  
Area: 57 sq. ft  
Counted as living area: Yes

Heated: Yes  
Finished: Yes  
Enclosed: Yes  
Contiguous: Yes  
Permitted: Yes  
Wet space: Yes  
Addition: No  
Conversion: No

**26 Floor 4 - Exercise Room**

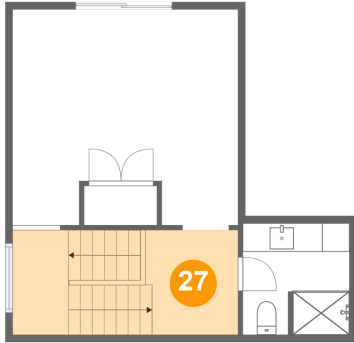


Dimensions: 15'9" x 15'0"  
Area: 220 sq. ft  
Counted as living area: Yes

Heated: Yes  
Finished: Yes  
Enclosed: Yes  
Contiguous: Yes  
Permitted: Yes  
Wet space: No  
Addition: No  
Conversion: No

**845 Companion Crescent, Manotick, Kars, Ontario,  
Canada, K0A 2E0, 845 Companion Cres**

**27 Floor 4 - Hall**



**Dimensions: 6'5" x 7'4"**  
**Area: 115 sq. ft**  
**Counted as living area: Yes**

**Heated: Yes**  
**Finished: Yes**  
**Enclosed: Yes**  
**Contiguous: Yes**  
**Permitted: Yes**  
**Wet space: No**  
**Addition: No**  
**Conversion: No**