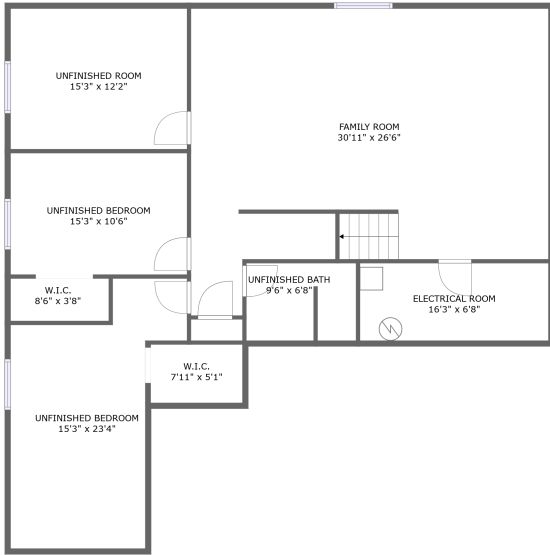


3024 DeWinter Dr, Pocatello Idaho United States



FLOOR 1



FLOOR 2

Property Summary



2 floors



5 bedrooms



2 bathrooms



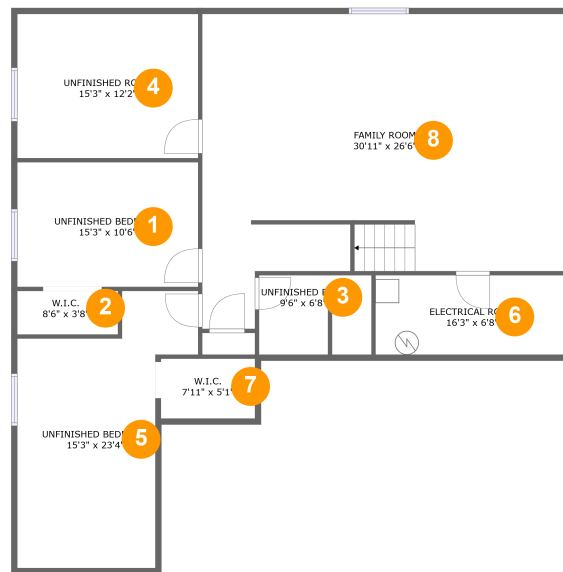
4,385 total sqft



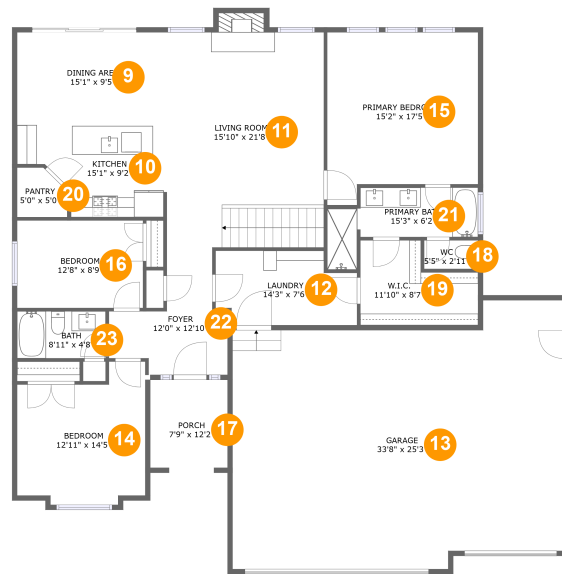
1 garages



2,813 Gross Living Area sqft

3024 DeWinter Dr, Pocatello Idaho United States**Room Dimensions****Floor 1****Total sqft: 1682****Living area: 1076**

#	Room name	Dimensions	Area (sqft)	Counted as Living Area
1	Unfinished Bedroom	15'3" x 10'6"	160 sq. ft	No
2	W.i.c.	8'6" x 3'8"	31 sq. ft	No
3	Unfinished Bath	9'6" x 6'8"	62 sq. ft	No
4	Unfinished Room	15'3" x 12'2"	185 sq. ft	No
5	Unfinished Bedroom	15'3" x 23'4"	256 sq. ft	Yes
6	Electrical Room	16'3" x 6'8"	109 sq. ft	No
7	W.i.c.	7'11" x 5'1"	40 sq. ft	Yes
8	Family Room	30'11" x 26'6"	685 sq. ft	Yes

3024 DeWinter Dr, Pocatello Idaho United States**Room Dimensions****Floor 2****Total sqft: 2703****Living area: 1737**

#	Room name	Dimensions	Area (sqft)	Counted as Living Area
9	Dining Area	15'1" x 9'5"	142 sq. ft	Yes
10	Kitchen	15'1" x 9'2"	113 sq. ft	Yes
11	Living Room	15'10" x 21'8"	353 sq. ft	Yes
12	Laundry	14'3" x 7'6"	97 sq. ft	Yes
13	Garage	33'8" x 25'3"	815 sq. ft	No
14	Bedroom	12'11" x 14'5"	160 sq. ft	Yes
15	Primary Bedroom	15'2" x 17'5"	239 sq. ft	Yes
16	Bedroom	12'8" x 8'9"	112 sq. ft	Yes
17	Porch	7'9" x 12'2"	96 sq. ft	No
18	Wc	5'5" x 2'11"	16 sq. ft	Yes
19	W.i.c.	11'10" x 8'7"	83 sq. ft	Yes

Scan captured on Sat, 18 May 2024 19:32:49 GMT

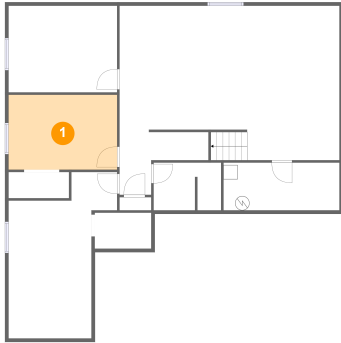
Information is calculated by CubiCasa technology; deemed highly reliable but not guaranteed.

3024 DeWinter Dr, Pocatello Idaho United States

#	Room name	Dimensions	Area (sqft)	Counted as Living Area
20	Pantry	5'0" x 5'0"	22 sq. ft	Yes
21	Primary Bath	15'3" x 6'2"	78 sq. ft	Yes
22	Foyer	12'0" x 12'10"	100 sq. ft	Yes
23	Bath	8'11" x 4'8"	42 sq. ft	Yes

3024 DeWinter Dr, Pocatello Idaho United States

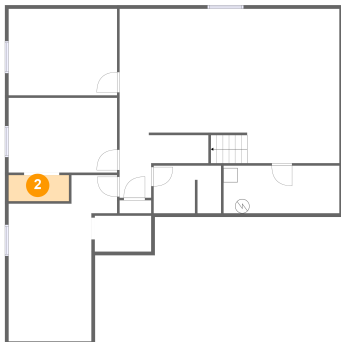
1 Floor 1 - Unfinished Bedroom



Dimensions: 15'3" x 10'6"
Area: 160 sq. ft
Counted as Living Area: No

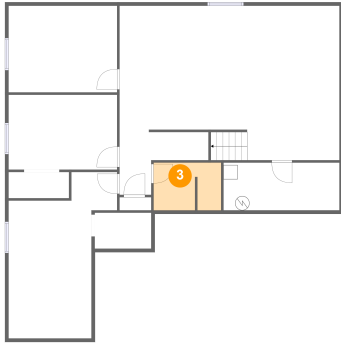
Heated: Yes
Finished: No
Enclosed: Yes
Contiguous: Yes
Permitted: Yes
Wet Space: No
Addition: No
Conversion: No

2 Floor 1 - W.i.c.



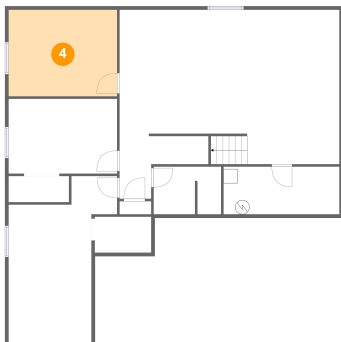
Dimensions: 8'6" x 3'8"
Area: 31 sq. ft
Counted as Living Area: No

Heated: Yes
Finished: No
Enclosed: Yes
Contiguous: Yes
Permitted: Yes
Wet Space: No
Addition: No
Conversion: No

3024 DeWinter Dr, Pocatello Idaho United States**3 Floor 1 - Unfinished Bath**

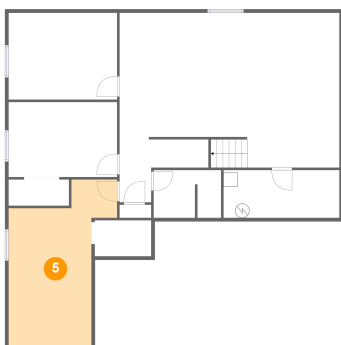
Dimensions: 9'6" x 6'8"
Area: 62 sq. ft
Counted as Living Area: No

Heated: Yes
Finished: No
Enclosed: Yes
Contiguous: Yes
Permitted: Yes
Wet Space: No
Addition: No
Conversion: No

4 Floor 1 - Unfinished Room

Dimensions: 15'3" x 12'2"
Area: 185 sq. ft
Counted as Living Area: No

Heated: Yes
Finished: No
Enclosed: Yes
Contiguous: Yes
Permitted: Yes
Wet Space: No
Addition: No
Conversion: No

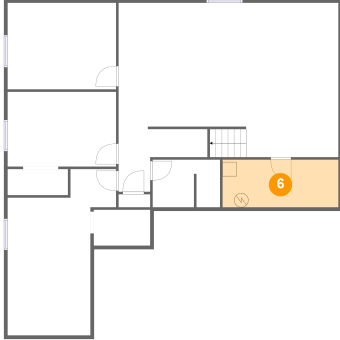
5 Floor 1 - Unfinished Bedroom

Dimensions: 15'3" x 23'4"
Area: 256 sq. ft
Counted as Living Area:
Yes

Heated: Yes
Finished: Yes
Enclosed: Yes
Contiguous:
Yes
Permitted: Yes
Wet Space: No
Addition: No
Conversion: No

3024 DeWinter Dr, Pocatello Idaho United States

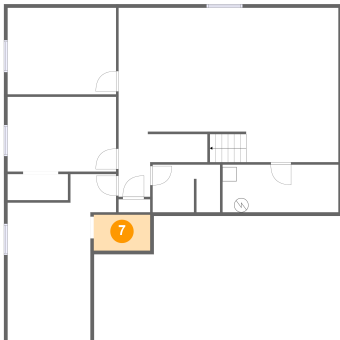
6 Floor 1 - Electrical Room



Dimensions: 16'3" x 6'8"
Area: 109 sq. ft
Counted as Living Area: No

Heated: No
Finished: No
Enclosed: Yes
Contiguous: Yes
Permitted: Yes
Wet Space: No
Addition: No
Conversion: No

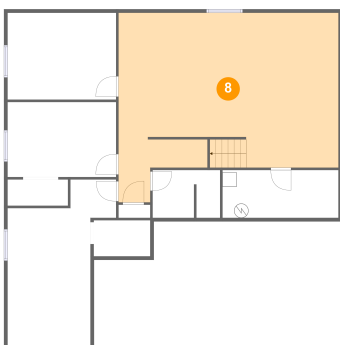
7 Floor 1 - W.i.c.



Dimensions: 7'11" x 5'1"
Area: 40 sq. ft
Counted as Living Area: Yes

Heated: Yes
Finished: Yes
Enclosed: Yes
Contiguous: Yes
Permitted: Yes
Wet Space: No
Addition: No
Conversion: No

8 Floor 1 - Family Room

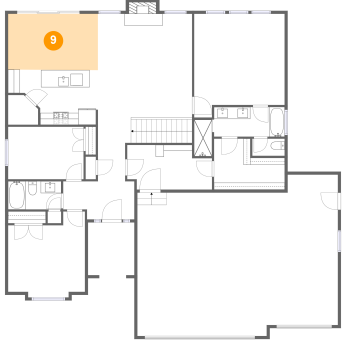


Dimensions: 30'11" x 26'6"
Area: 685 sq. ft
Counted as Living Area: Yes

Heated: Yes
Finished: Yes
Enclosed: Yes
Contiguous: Yes
Permitted: Yes
Wet Space: No
Addition: No
Conversion: No

3024 DeWinter Dr, Pocatello Idaho United States

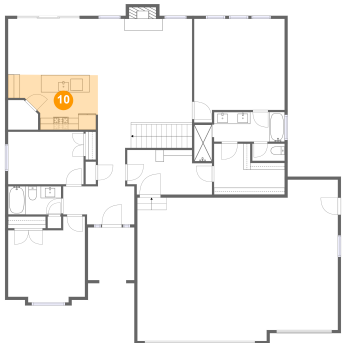
9 Floor 2 - Dining Area



Dimensions: 15'1" x 9'5"
Area: 142 sq. ft
Counted as Living Area:
Yes

Heated: Yes
Finished: Yes
Enclosed: Yes
Contiguous:
Yes
Permitted: Yes
Wet Space: No
Addition: No
Conversion: No

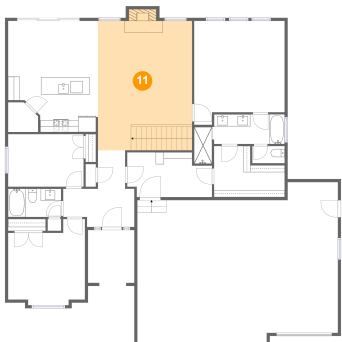
10 Floor 2 - Kitchen



Dimensions: 15'1" x 9'2"
Area: 113 sq. ft
Counted as Living Area:
Yes

Heated: Yes
Finished: Yes
Enclosed: Yes
Contiguous:
Yes
Permitted: Yes
Wet Space: No
Addition: No
Conversion: No

11 Floor 2 - Living Room

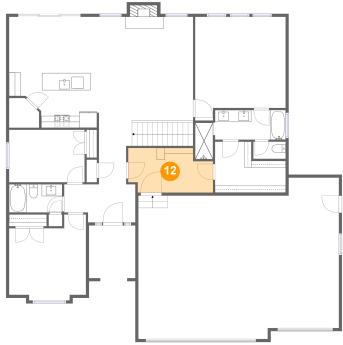


Dimensions: 15'10" x 21'8"
Area: 353 sq. ft
Counted as Living Area:
Yes

Heated: Yes
Finished: Yes
Enclosed: Yes
Contiguous:
Yes
Permitted: Yes
Wet Space: No
Addition: No
Conversion: No

3024 DeWinter Dr, Pocatello Idaho United States

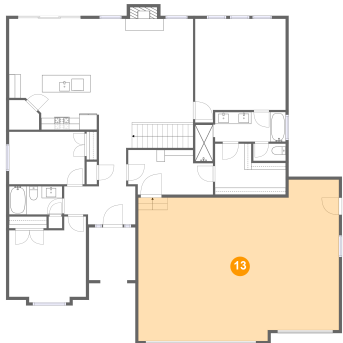
12 Floor 2 - Laundry



Dimensions: 14'3" x 7'6"
Area: 97 sq. ft
Counted as Living Area:
Yes

Heated: Yes
Finished: Yes
Enclosed: Yes
Contiguous:
Yes
Permitted: Yes
Wet Space: No
Addition: No
Conversion: No

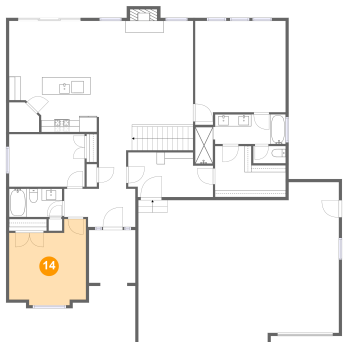
13 Floor 2 - Garage



Dimensions: 33'8" x 25'3"
Area: 815 sq. ft
Counted as Living Area: No

Heated: No
Finished: No
Enclosed: Yes
Contiguous: Yes
Permitted: Yes
Wet Space: No
Addition: No
Conversion: No

14 Floor 2 - Bedroom

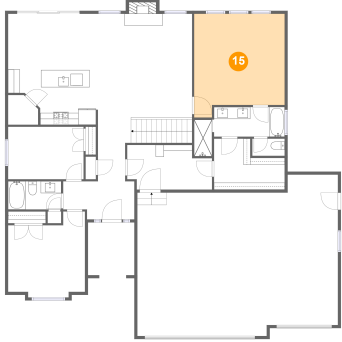


Dimensions: 12'11" x 14'5"
Area: 160 sq. ft
Counted as Living Area:
Yes

Heated: Yes
Finished: Yes
Enclosed: Yes
Contiguous:
Yes
Permitted: Yes
Wet Space: No
Addition: No
Conversion: No

3024 DeWinter Dr, Pocatello Idaho United States

15 Floor 2 - Primary Bedroom



Dimensions: 15'2" x 17'5"
Area: 239 sq. ft
Counted as Living Area:
Yes

Heated: Yes
Finished: Yes
Enclosed: Yes
Contiguous:
Yes
Permitted: Yes
Wet Space: No
Addition: No
Conversion: No

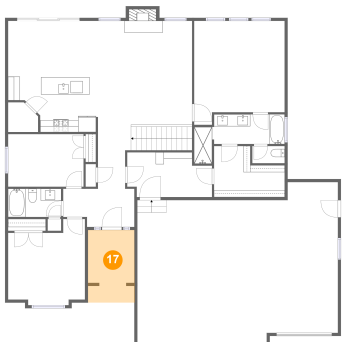
16 Floor 2 - Bedroom



Dimensions: 12'8" x 8'9"
Area: 112 sq. ft
Counted as Living Area:
Yes

Heated: Yes
Finished: Yes
Enclosed: Yes
Contiguous:
Yes
Permitted: Yes
Wet Space: No
Addition: No
Conversion: No

17 Floor 2 - Porch



Dimensions: 7'9" x 12'2"
Area: 96 sq. ft
Counted as Living Area: No

Heated: No
Finished: Yes
Enclosed: No
Contiguous: Yes
Permitted: Yes
Wet Space: No
Addition: No
Conversion: No

3024 DeWinter Dr, Pocatello Idaho United States

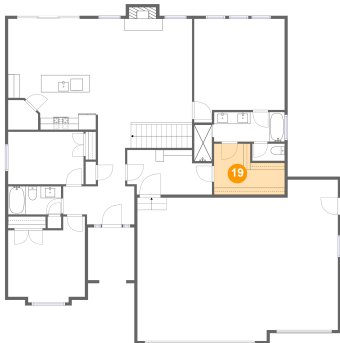
18 Floor 2 - Wc



Dimensions: 5'5" x 2'11"
Area: 16 sq. ft
Counted as Living Area:
Yes

Heated: Yes
Finished: Yes
Enclosed: Yes
Contiguous:
Yes
Permitted: Yes
Wet Space: Yes
Addition: No
Conversion: No

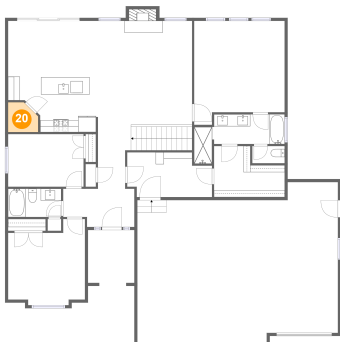
19 Floor 2 - W.i.c.



Dimensions: 11'10" x 8'7"
Area: 83 sq. ft
Counted as Living Area:
Yes

Heated: Yes
Finished: Yes
Enclosed: Yes
Contiguous:
Yes
Permitted: Yes
Wet Space: No
Addition: No
Conversion: No

20 Floor 2 - Pantry

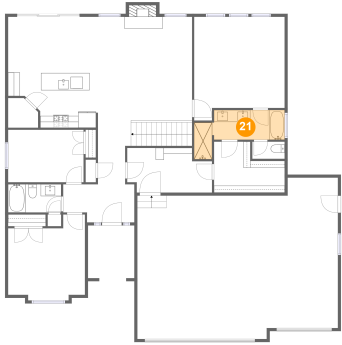


Dimensions: 5'0" x 5'0"
Area: 22 sq. ft
Counted as Living Area:
Yes

Heated: Yes
Finished: Yes
Enclosed: Yes
Contiguous:
Yes
Permitted: Yes
Wet Space: No
Addition: No
Conversion: No

3024 DeWinter Dr, Pocatello Idaho United States

21 Floor 2 - Primary Bath



Dimensions: 15'3" x 6'2"
Area: 78 sq. ft
Counted as Living Area:
Yes

Heated: Yes
Finished: Yes
Enclosed: Yes
Contiguous:
Yes
Permitted: Yes
Wet Space: Yes
Addition: No
Conversion: No

22 Floor 2 - Foyer



Dimensions: 12'0" x 12'10"
Area: 100 sq. ft
Counted as Living Area:
Yes

Heated: Yes
Finished: Yes
Enclosed: Yes
Contiguous:
Yes
Permitted: Yes
Wet Space: No
Addition: No
Conversion: No

23 Floor 2 - Bath



Dimensions: 8'11" x 4'8"
Area: 42 sq. ft
Counted as Living Area:
Yes

Heated: Yes
Finished: Yes
Enclosed: Yes
Contiguous:
Yes
Permitted: Yes
Wet Space: Yes
Addition: No
Conversion: No