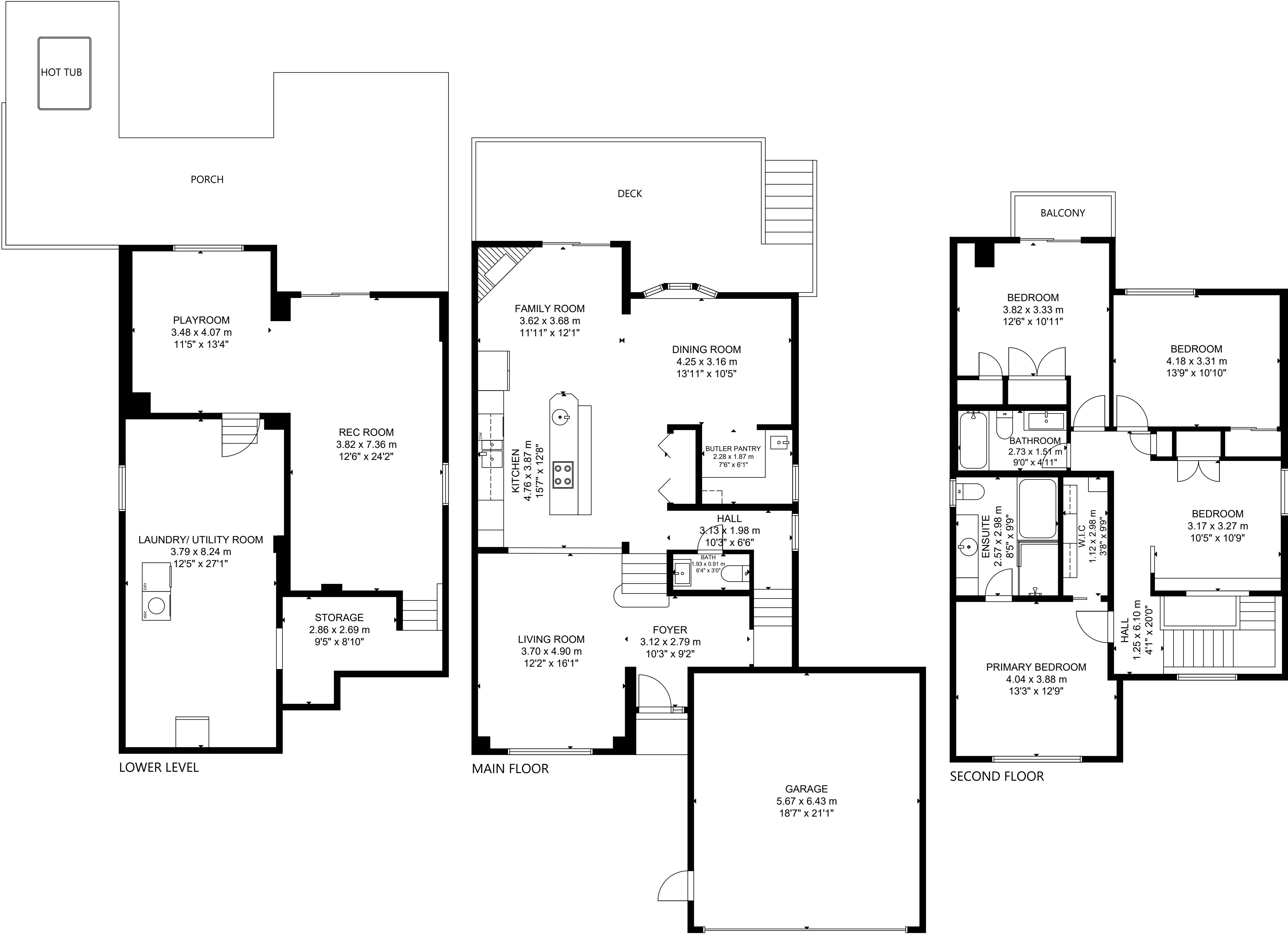


24 Cherrydale Court



GROSS INTERNAL AREA
 MAIN FLOOR: 937 sq ft/ 87 m², SECOND FLOOR: 962 sq ft/ 90 m²
 LOWER LEVEL: 932 sq ft/ 87 m²
 GARAGE: 389 sq ft/ 36 m²
 TOTAL: 2,831 sq ft/ 264 m²
 SIZE AND DIMENSIONS ARE APPROXIMATE, ACTUAL MAY VARY.