

Home data report

1404 River Cove Dr,Osceola,IN,US



Total Area: 2128 sq. ft

Below Ground: 377 sq. ft, 1st Floor: 1751 sq. ft


Excluded: Basement 1234 sq. ft, Garage 813 sq. ft, Porch 100 sq. ft, Fireplace 7 sq. ft, Walls: 238 sq. ft

Property summary

 **2** Floors

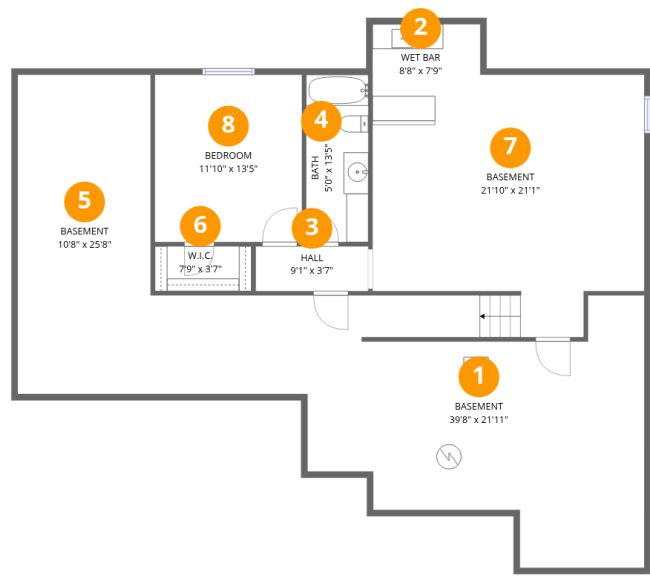
 **4** Bedrooms

 **3** Bathrooms

 **1** Garages

Home data report

1404 River Cove Dr,Osceola,IN,US



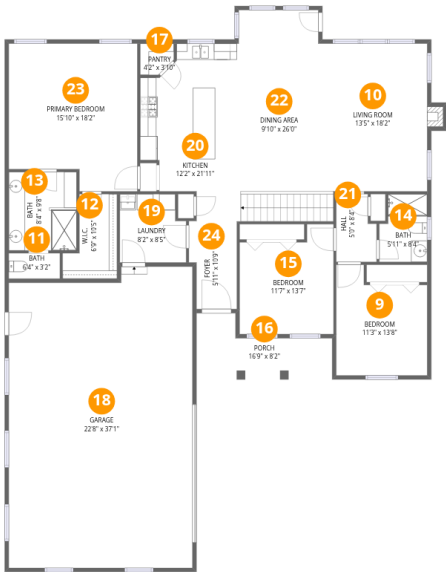
Room dimensions

Floor 1 Below grade Total:377sqft Excluded: 1234sqft

#		Dimensions	sqft	Counted as living area
1	Basement	39'8" x 21'11"	573 sq. ft	No
2	Wet Bar	8'8" x 7'9"	61 sq. ft	Yes
3	Hall	9'1" x 3'7"	33 sq. ft	Yes
4	Bath	5'0" x 13'5"	67 sq. ft	Yes
5	Basement	10'8" x 25'8"	275 sq. ft	No
6	W.I.C.	7'9" x 3'7"	28 sq. ft	Yes
7	Basement	21'10" x 21'1"	374 sq. ft	No
8	Bedroom	11'10" x 13'5"	159 sq. ft	Yes

Home data report

1404 River Cove Dr,Osceola,IN,US



Room dimensions

Floor 2 Total:1751sqft    Excluded: 920sqft

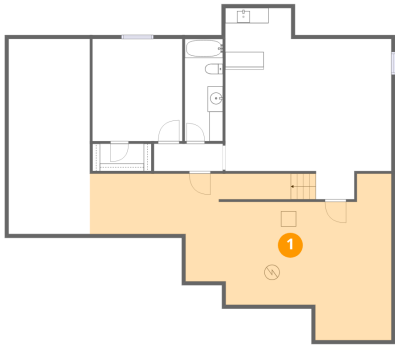
#		Dimensions	sqft	Counted as living area
9	Bedroom	11'3" x 13'8"	133 sq. ft	Yes
10	Living Room	13'5" x 18'2"	256 sq. ft	Yes
11	Bath	6'4" x 3'2"	20 sq. ft	Yes
12	W.I.C.	6'9" x 10'5"	55 sq. ft	Yes
13	Bath	8'4" x 9'8"	81 sq. ft	Yes
14	Bath	5'11" x 8'4"	45 sq. ft	Yes
15	Bedroom	11'7" x 13'7"	138 sq. ft	Yes
16	Porch	16'9" x 8'2"	100 sq. ft	No
17	Pantry	4'2" x 3'10"	14 sq. ft	Yes
18	Garage	22'8" x 37'1"	813 sq. ft	No
19	Laundry	8'2" x 8'5"	65 sq. ft	Yes

## Home data report

# 1404 River Cove Dr,Osceola,IN,US

#		Dimensions	sqft	Counted as living area
20	Kitchen	12'2" x 21'11"	215 sq. ft	Yes
21	Hall	5'0" x 8'4"	38 sq. ft	Yes
22	Dining Area	9'10" x 26'0"	256 sq. ft	Yes
23	Primary Bedroom	15'10" x 18'2"	265 sq. ft	Yes
24	Foyer	5'11" x 10'9"	58 sq. ft	Yes

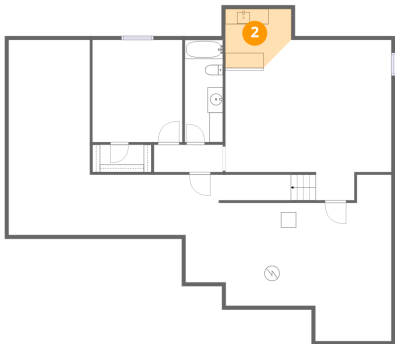
1 Floor 1 - Basement



Dimensions: 39'8" x 21'11"  
Area: 573 sq. ft  
Counted as living area: No

Heated: Yes  
Finished: No  
Enclosed: Yes  
Contiguous: Yes  
Permitted: Yes  
Wet space: No  
Addition: No  
Conversion: No

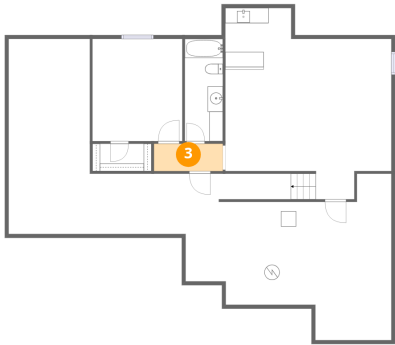
2 Floor 1 - Wet Bar



Dimensions: 8'8" x 7'9"  
Area: 61 sq. ft  
Counted as living area: No

Heated: Yes  
Finished: Yes  
Enclosed: Yes  
Contiguous: No  
Permitted: Yes  
Wet space: No  
Addition: No  
Conversion: No

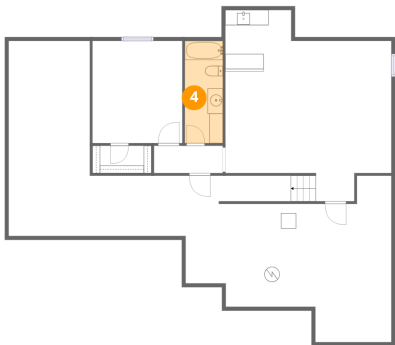
3 Floor 1 - Hall



Dimensions: 9'1" x 3'7"  
Area: 33 sq. ft  
Counted as living area: Yes

Heated: Yes  
Finished: Yes  
Enclosed: Yes  
Contiguous: Yes  
Permitted: Yes  
Wet space: No  
Addition: No  
Conversion: No

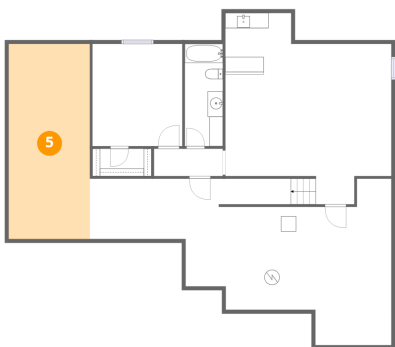
4 Floor 1 - Bath



Dimensions: 5'0" x 13'5"  
Area: 67 sq. ft  
Counted as living area: Yes

Heated: Yes  
Finished: Yes  
Enclosed: Yes  
Contiguous: Yes  
Permitted: Yes  
Wet space: Yes  
Addition: No  
Conversion: No

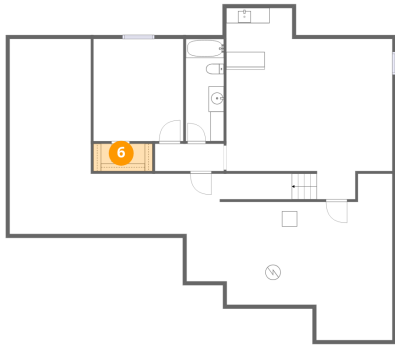
5 Floor 1 - Basement



Dimensions: 10'8" x 25'8"  
Area: 275 sq. ft  
Counted as living area: No

Heated: Yes  
Finished: No  
Enclosed: Yes  
Contiguous: Yes  
Permitted: Yes  
Wet space: No  
Addition: No  
Conversion: No

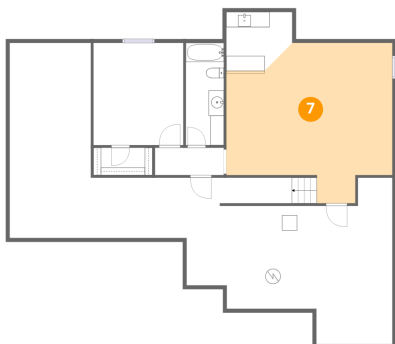
## 6 Floor 1 - W.I.C.



Dimensions: 7'9" x 3'7"  
Area: 28 sq. ft  
Counted as living area: Yes

Heated: Yes  
Finished: Yes  
Enclosed: Yes  
Contiguous: Yes  
Permitted: Yes  
Wet space: No  
Addition: No  
Conversion: No

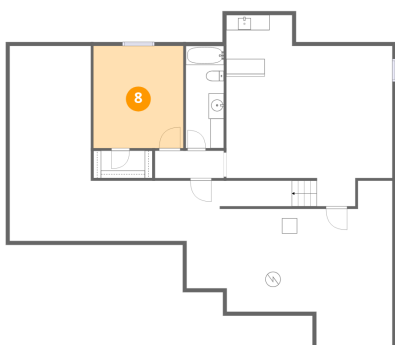
## 7 Floor 1 - Basement



Dimensions: 21'10" x 21'1"  
Area: 374 sq. ft  
Counted as living area: No

Heated: Yes  
Finished: No  
Enclosed: Yes  
Contiguous: Yes  
Permitted: Yes  
Wet space: No  
Addition: No  
Conversion: No

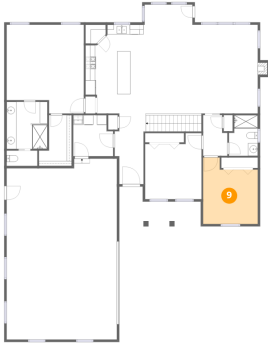
## 8 Floor 1 - Bedroom



Dimensions: 11'10" x 13'5"  
Area: 159 sq. ft  
Counted as living area: Yes

Heated: Yes  
Finished: Yes  
Enclosed: Yes  
Contiguous: Yes  
Permitted: Yes  
Wet space: No  
Addition: No  
Conversion: No

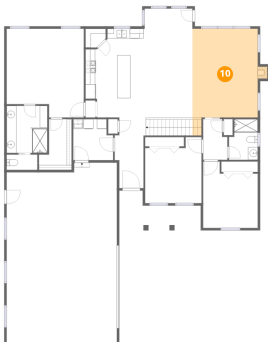
## 9 Floor 2 - Bedroom



Dimensions: 11'3" x 13'8"  
Area: 133 sq. ft  
Counted as living area: Yes

Heated: Yes  
Finished: Yes  
Enclosed: Yes  
Contiguous: Yes  
Permitted: Yes  
Wet space: No  
Addition: No  
Conversion: No

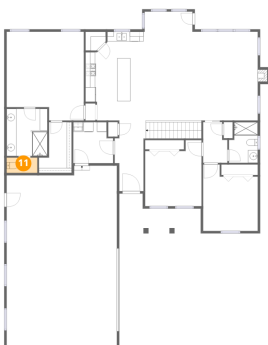
## 10 Floor 2 - Living Room



Dimensions: 13'5" x 18'2"  
Area: 256 sq. ft  
Counted as living area: Yes

Heated: Yes  
Finished: Yes  
Enclosed: Yes  
Contiguous: Yes  
Permitted: Yes  
Wet space: No  
Addition: No  
Conversion: No

## 11 Floor 2 - Bath

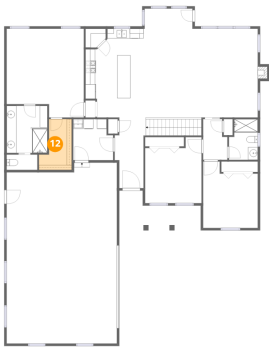


Dimensions: 6'4" x 3'2"  
Area: 20 sq. ft  
Counted as living area: Yes

Heated: Yes  
Finished: Yes  
Enclosed: Yes  
Contiguous: Yes  
Permitted: Yes  
Wet space: Yes  
Addition: No  
Conversion: No



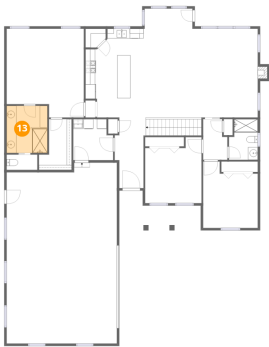
12 Floor 2 - W.I.C.



Dimensions: 6'9" x 10'5"  
Area: 55 sq. ft  
Counted as living area: Yes

Heated: Yes  
Finished: Yes  
Enclosed: Yes  
Contiguous: Yes  
Permitted: Yes  
Wet space: No  
Addition: No  
Conversion: No

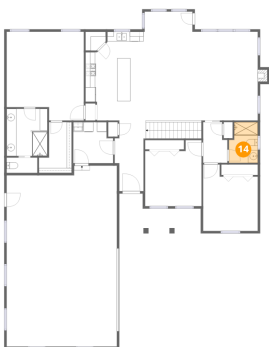
13 Floor 2 - Bath



Dimensions: 8'4" x 9'8"  
Area: 81 sq. ft  
Counted as living area: Yes

Heated: Yes  
Finished: Yes  
Enclosed: Yes  
Contiguous: Yes  
Permitted: Yes  
Wet space: Yes  
Addition: No  
Conversion: No

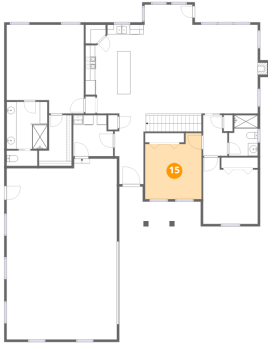
14 Floor 2 - Bath



Dimensions: 5'11" x 8'4"  
Area: 45 sq. ft  
Counted as living area: Yes

Heated: Yes  
Finished: Yes  
Enclosed: Yes  
Contiguous: Yes  
Permitted: Yes  
Wet space: Yes  
Addition: No  
Conversion: No

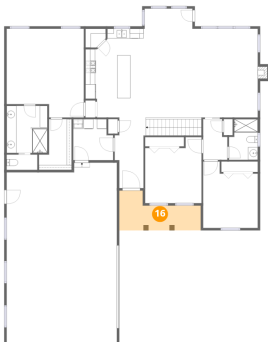
## 15 Floor 2 - Bedroom



Dimensions: 11'7" x 13'7"  
Area: 138 sq. ft  
Counted as living area: Yes

Heated: Yes  
Finished: Yes  
Enclosed: Yes  
Contiguous: Yes  
Permitted: Yes  
Wet space: No  
Addition: No  
Conversion: No

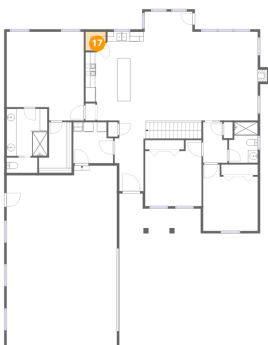
## 16 Floor 2 - Porch



Dimensions: 16'9" x 8'2"  
Area: 100 sq. ft  
Counted as living area: No

Heated: No  
Finished: No  
Enclosed: No  
Contiguous: Yes  
Permitted: Yes  
Wet space: No  
Addition: No  
Conversion: No

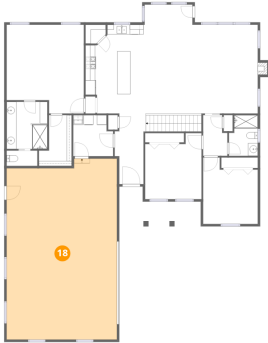
## 17 Floor 2 - Pantry



Dimensions: 4'2" x 3'10"  
Area: 14 sq. ft  
Counted as living area: Yes

Heated: Yes  
Finished: Yes  
Enclosed: Yes  
Contiguous: Yes  
Permitted: Yes  
Wet space: No  
Addition: No  
Conversion: No

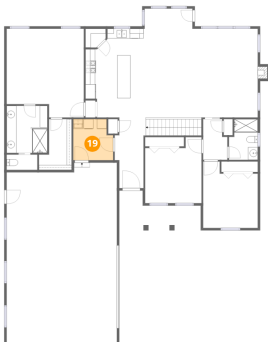
## 18 Floor 2 - Garage



Dimensions: 22'8" x 37'1"  
Area: 813 sq. ft  
Counted as living area: No

Heated: No  
Finished: No  
Enclosed: Yes  
Contiguous: Yes  
Permitted: Yes  
Wet space: No  
Addition: No  
Conversion: No

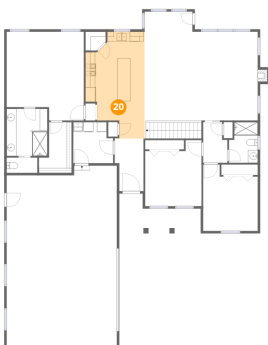
## 19 Floor 2 - Laundry



Dimensions: 8'2" x 8'5"  
Area: 65 sq. ft  
Counted as living area: Yes

Heated: Yes  
Finished: Yes  
Enclosed: Yes  
Contiguous: Yes  
Permitted: Yes  
Wet space: No  
Addition: No  
Conversion: No

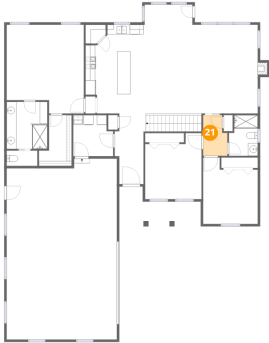
## 20 Floor 2 - Kitchen



Dimensions: 12'2" x 21'11"  
Area: 215 sq. ft  
Counted as living area: Yes

Heated: Yes  
Finished: Yes  
Enclosed: Yes  
Contiguous: Yes  
Permitted: Yes  
Wet space: No  
Addition: No  
Conversion: No

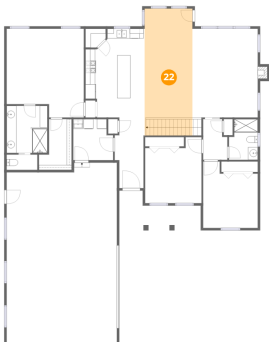
## 21 Floor 2 - Hall



Dimensions: 5'0" x 8'4"  
Area: 38 sq. ft  
Counted as living area: Yes

Heated: Yes  
Finished: Yes  
Enclosed: Yes  
Contiguous: Yes  
Permitted: Yes  
Wet space: No  
Addition: No  
Conversion: No

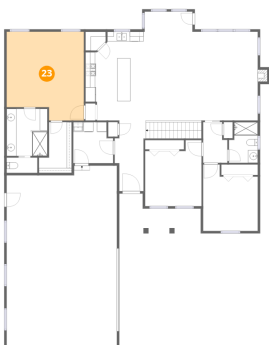
## 22 Floor 2 - Dining Area



Dimensions: 9'10" x 26'0"  
Area: 256 sq. ft  
Counted as living area: Yes

Heated: Yes  
Finished: Yes  
Enclosed: Yes  
Contiguous: Yes  
Permitted: Yes  
Wet space: No  
Addition: No  
Conversion: No

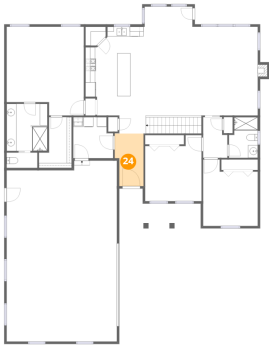
## 23 Floor 2 - Primary Bedroom



Dimensions: 15'10" x 18'2"  
Area: 265 sq. ft  
Counted as living area: Yes

Heated: Yes  
Finished: Yes  
Enclosed: Yes  
Contiguous: Yes  
Permitted: Yes  
Wet space: No  
Addition: No  
Conversion: No

24 Floor 2 - Foyer



Dimensions: 5'11" x 10'9"  
Area: 58 sq. ft  
Counted as living area: Yes

Heated: Yes  
Finished: Yes  
Enclosed: Yes  
Contiguous: Yes  
Permitted: Yes  
Wet space: No  
Addition: No  
Conversion: No