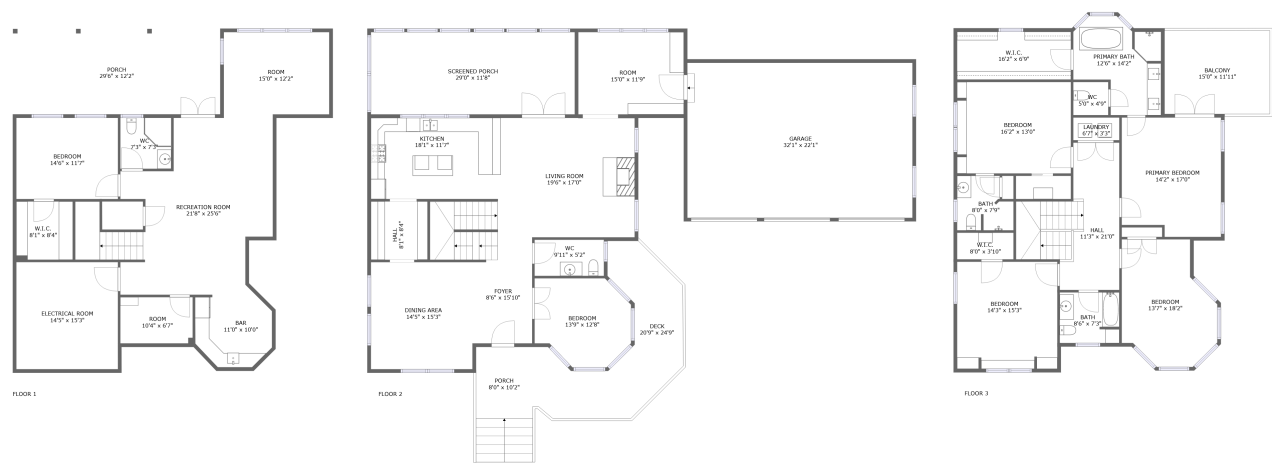


Home report

6060 Roycroft Drive, Highfields, Cave Spring, Roanoke, Roanoke County, Virginia, United States, 24018



**Total Area: 4227 sq. ft**  
Below Ground: 1178 sq. ft, Floor 2: 1430 sq. ft, Floor 3: 1619 sq. ft  
Excluded: Electrical room 221 sq. ft, Porch 491 sq. ft, Garage 708 sq. ft, Screened porch 340 sq. ft, Deck 268 sq. ft, Balcony 178 sq. ft, Walls: 357 sq. ft

Property summary

**3** Floors

**6** Bedrooms

**3** Bathrooms

Home report

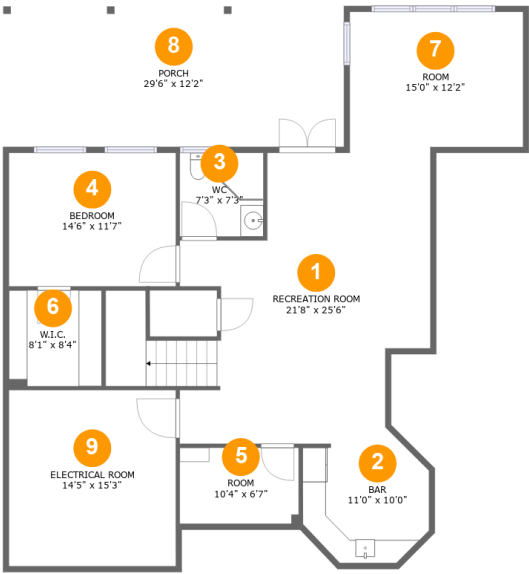
6060 Roycroft Drive, Highfields, Cave Spring, Roanoke, Roanoke County, Virginia, United States, 24018

 **2**  
Half baths

 **1**  
Garages

Home report

6060 Roycroft Drive, Highfields, Cave Spring, Roanoke, Roanoke County, Virginia, United States, 24018



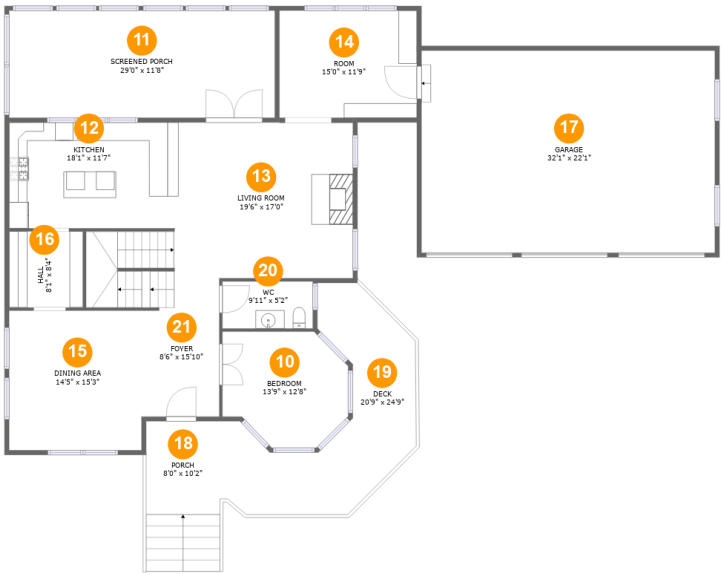
Room dimensions

Floor 1 Below ground Total:1178sqft    Excluded: 580sqft

#		Max Dimensions	sqft	Included
1	Recreation Room	21'8" x 25'6"	483 sq. ft	Yes
2	Bar	11'0" x 10'0"	98 sq. ft	Yes
3	WC	7'3" x 7'3"	53 sq. ft	Yes
4	Bedroom	14'6" x 11'7"	167 sq. ft	Yes
5	Room	10'4" x 6'7"	68 sq. ft	Yes
6	W.I.C.	8'1" x 8'4"	67 sq. ft	Yes
7	Room	15'0" x 12'2"	179 sq. ft	Yes
8	Porch	29'6" x 12'2"	359 sq. ft	No
9	Electrical Room	14'5" x 15'3"	221 sq. ft	No

Home report

6060 Roycroft Drive, Highfields, Cave Spring, Roanoke, Roanoke County, Virginia, United States, 24018



Room dimensions

Floor 2

Total:1430sqft

Excluded: 1448sqft

#		Max Dimensions	sqft	Included
10	Bedroom	13'9" x 12'8"	149 sq. ft	Yes
11	Screened Porch	29'0" x 11'8"	340 sq. ft	No
12	Kitchen	18'1" x 11'7"	209 sq. ft	Yes
13	Living Room	19'6" x 17'0"	331 sq. ft	Yes
14	Room	15'0" x 11'9"	176 sq. ft	Yes
15	Dining Area	14'5" x 15'3"	220 sq. ft	Yes
16	Hall	8'1" x 8'4"	67 sq. ft	Yes
17	Garage	32'1" x 22'1"	708 sq. ft	No
18	Porch	8'0" x 10'2"	132 sq. ft	No
19	Deck	20'9" x 24'9"	269 sq. ft	No
20	WC	9'11" x 5'2"	51 sq. ft	Yes

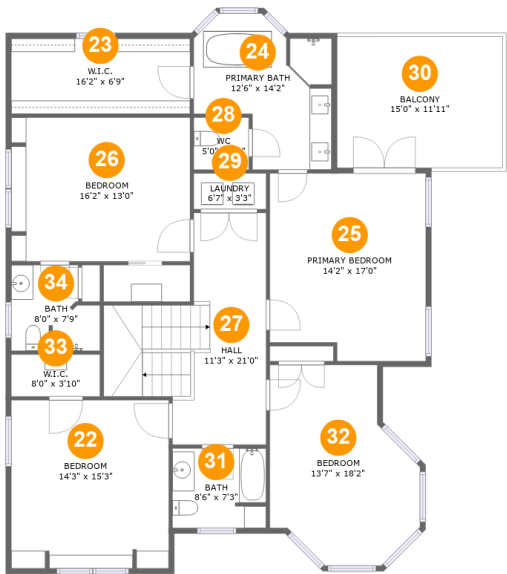
Home report

6060 Roycroft Drive, Highfields, Cave Spring, Roanoke, Roanoke County, Virginia, United States, 24018

#		Max Dimensions	sqft	Included
21	Foyer	8'6" x 15'10"	195 sq. ft	Yes

Home report

6060 Roycroft Drive, Highfields, Cave Spring, Roanoke, Roanoke County, Virginia, United States, 24018



Room dimensions

Floor 3

Total:1619sqft    Excluded: 178sqft

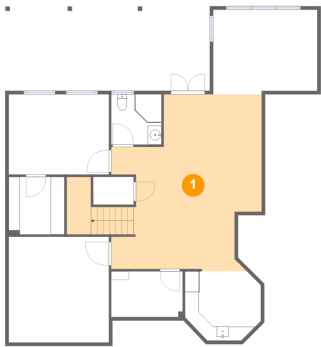
#		Max Dimensions	sqft	Included
22	Bedroom	14'3" x 15'3"	217 sq. ft	Yes
23	W.I.C.	16'2" x 6'9"	111 sq. ft	Yes
24	Primary Bath	12'6" x 14'2"	134 sq. ft	Yes
25	Primary Bedroom	14'2" x 17'0"	230 sq. ft	Yes
26	Bedroom	16'2" x 13'0"	210 sq. ft	Yes
27	Hall	11'3" x 21'0"	214 sq. ft	Yes
28	WC	5'0" x 4'9"	24 sq. ft	Yes
29	Laundry	6'7" x 3'3"	21 sq. ft	Yes
30	Balcony	15'0" x 11'11"	178 sq. ft	No
31	Bath	8'6" x 7'3"	60 sq. ft	Yes
32	Bedroom	13'7" x 18'2"	202 sq. ft	Yes

Home report

6060 Roycroft Drive, Highfields, Cave Spring, Roanoke, Roanoke County, Virginia, United States, 24018

#		Max Dimensions	sqft	Included
33	W.I.C.	8'0" x 3'10"	31 sq. ft	Yes
34	Bath	8'0" x 7'9"	54 sq. ft	Yes

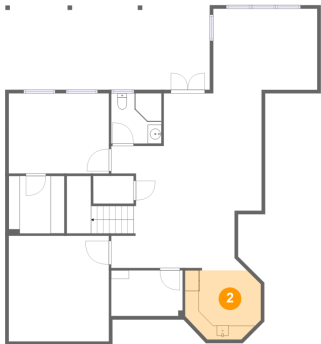
1 Floor 1 - Recreation Room



Max Dimensions: 21'8" x 25'6"  
Calculated Area: 483 sq. ft  
Included: Yes

Heated: Yes  
Finished: Yes  
Enclosed: Yes  
Contiguous: Yes  
Permitted: Yes  
Wet space: No  
Addition: No  
Conversion: No

2 Floor 1 - Bar



Max Dimensions: 11'0" x 10'0"  
Calculated Area: 98 sq. ft  
Included: Yes

Heated: Yes  
Finished: Yes  
Enclosed: Yes  
Contiguous: Yes  
Permitted: Yes  
Wet space: No  
Addition: No  
Conversion: No



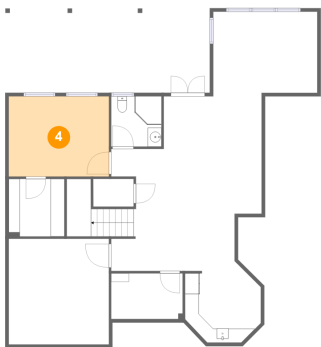
3 Floor 1 - WC



Max Dimensions: 7'3" x 7'3"  
Calculated Area: 53 sq. ft  
Included: Yes

Heated: Yes  
Finished: Yes  
Enclosed: Yes  
Contiguous: Yes  
Permitted: Yes  
Wet space: Yes  
Addition: No  
Conversion: No

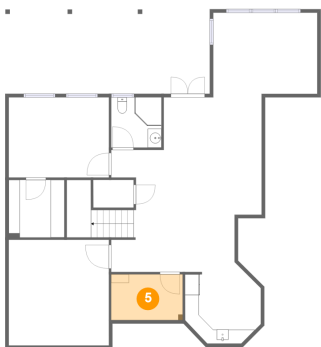
4 Floor 1 - Bedroom



Max Dimensions: 14'6" x 11'7"  
Calculated Area: 167 sq. ft  
Included: Yes

Heated: Yes  
Finished: Yes  
Enclosed: Yes  
Contiguous: Yes  
Permitted: Yes  
Wet space: No  
Addition: No  
Conversion: No

5 Floor 1 - Room



Max Dimensions: 10'4" x 6'7"  
Calculated Area: 68 sq. ft  
Included: Yes

Heated: Yes  
Finished: Yes  
Enclosed: Yes  
Contiguous: Yes  
Permitted: Yes  
Wet space: No  
Addition: No  
Conversion: No

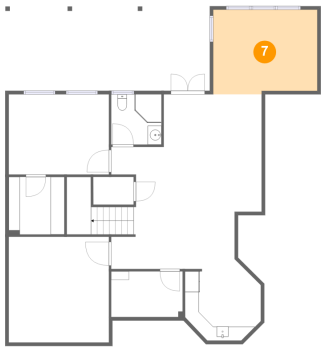
6 Floor 1 - W.I.C.



Max Dimensions: 8'1" x 8'4"  
Calculated Area: 67 sq. ft  
Included: Yes

Heated: Yes  
Finished: Yes  
Enclosed: Yes  
Contiguous: Yes  
Permitted: Yes  
Wet space: No  
Addition: No  
Conversion: No

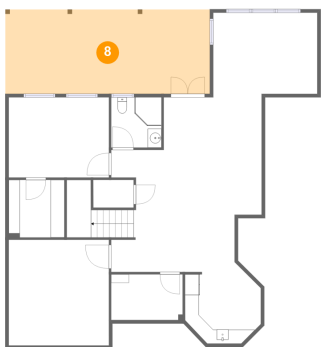
7 Floor 1 - Room



Max Dimensions: 15'0" x 12'2"  
Calculated Area: 179 sq. ft  
Included: Yes

Heated: Yes  
Finished: Yes  
Enclosed: Yes  
Contiguous: Yes  
Permitted: Yes  
Wet space: No  
Addition: No  
Conversion: No

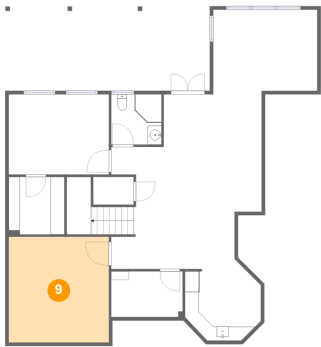
8 Floor 1 - Porch



Max Dimensions: 29'6" x 12'2"  
Calculated Area: 359 sq. ft  
Included: No

Heated: No  
Finished: Yes  
Enclosed: No  
Contiguous: Yes  
Permitted: Yes  
Wet space: No  
Addition: No  
Conversion: No

9 Floor 1 - Electrical Room



Max Dimensions: 14'5" x 15'3"  
Calculated Area: 221 sq. ft  
Included: No

Heated: No  
Finished: No  
Enclosed: Yes  
Contiguous: Yes  
Permitted: Yes  
Wet space: No  
Addition: No  
Conversion: No

10 Floor 2 - Bedroom



Max Dimensions: 13'9" x 12'8"  
Calculated Area: 149 sq. ft  
Included: Yes

Heated: Yes  
Finished: Yes  
Enclosed: Yes  
Contiguous: Yes  
Permitted: Yes  
Wet space: No  
Addition: No  
Conversion: No

11 Floor 2 - Screened Porch



Max Dimensions: 29'0" x 11'8"  
Calculated Area: 340 sq. ft  
Included: No

Heated: No  
Finished: Yes  
Enclosed: No  
Contiguous: Yes  
Permitted: Yes  
Wet space: No  
Addition: No  
Conversion: No

6060 Roycroft Drive, Highfields, Cave Spring, Roanoke, Roanoke County, Virginia, United States, 24018

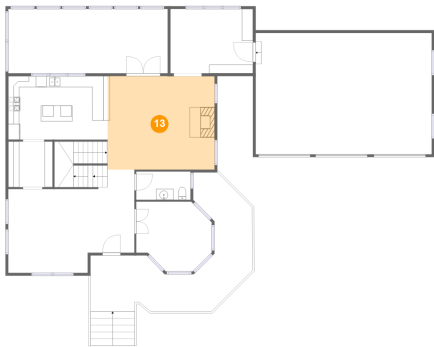
12 Floor 2 - Kitchen



Max Dimensions: 18'1" x 11'7"  
Calculated Area: 209 sq. ft  
Included: Yes

Heated: Yes  
Finished: Yes  
Enclosed: Yes  
Contiguous: Yes  
Permitted: Yes  
Wet space: No  
Addition: No  
Conversion: No

13 Floor 2 - Living Room



Max Dimensions: 19'6" x 17'0"  
Calculated Area: 331 sq. ft  
Included: Yes

Heated: Yes  
Finished: Yes  
Enclosed: Yes  
Contiguous: Yes  
Permitted: Yes  
Wet space: No  
Addition: No  
Conversion: No

14 Floor 2 - Room



Max Dimensions: 15'0" x 11'9"  
Calculated Area: 176 sq. ft  
Included: Yes

Heated: Yes  
Finished: Yes  
Enclosed: Yes  
Contiguous: Yes  
Permitted: Yes  
Wet space: No  
Addition: No  
Conversion: No

15 Floor 2 - Dining Area



Max Dimensions: 14'5" x 15'3"  
Calculated Area: 220 sq. ft  
Included: Yes

Heated: Yes  
Finished: Yes  
Enclosed: Yes  
Contiguous: Yes  
Permitted: Yes  
Wet space: No  
Addition: No  
Conversion: No

16 Floor 2 - Hall



Max Dimensions: 8'1" x 8'4"  
Calculated Area: 67 sq. ft  
Included: Yes

Heated: Yes  
Finished: Yes  
Enclosed: Yes  
Contiguous: Yes  
Permitted: Yes  
Wet space: No  
Addition: No  
Conversion: No

17 Floor 2 - Garage



Max Dimensions: 32'1" x 22'1"  
Calculated Area: 708 sq. ft  
Included: No

Heated: No  
Finished: No  
Enclosed: Yes  
Contiguous: Yes  
Permitted: Yes  
Wet space: No  
Addition: No  
Conversion: No

18 Floor 2 - Porch



Max Dimensions: 8'0" x 10'2"  
Calculated Area: 132 sq. ft  
Included: No

Heated: No  
Finished: Yes  
Enclosed: No  
Contiguous: Yes  
Permitted: Yes  
Wet space: No  
Addition: No  
Conversion: No

19 Floor 2 - Deck



Max Dimensions: 20'9" x 24'9"  
Calculated Area: 269 sq. ft  
Included: No

Heated: No  
Finished: Yes  
Enclosed: No  
Contiguous: Yes  
Permitted: Yes  
Wet space: No  
Addition: No  
Conversion: No

20 Floor 2 - WC



Max Dimensions: 9'11" x 5'2"  
Calculated Area: 51 sq. ft  
Included: Yes

Heated: Yes  
Finished: Yes  
Enclosed: Yes  
Contiguous: Yes  
Permitted: Yes  
Wet space: Yes  
Addition: No  
Conversion: No

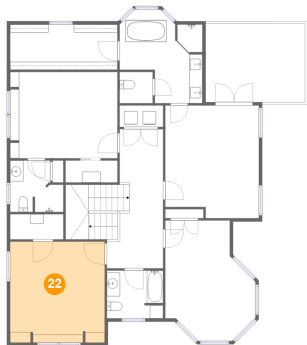
21 Floor 2 - Foyer



Max Dimensions: 8'6" x 15'10"  
Calculated Area: 195 sq. ft  
Included: Yes

Heated: Yes  
Finished: Yes  
Enclosed: Yes  
Contiguous: Yes  
Permitted: Yes  
Wet space: No  
Addition: No  
Conversion: No

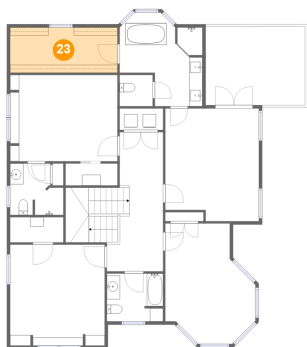
22 Floor 3 - Bedroom



Max Dimensions: 14'3" x 15'3"  
Calculated Area: 217 sq. ft  
Included: Yes

Heated: Yes  
Finished: Yes  
Enclosed: Yes  
Contiguous: Yes  
Permitted: Yes  
Wet space: No  
Addition: No  
Conversion: No

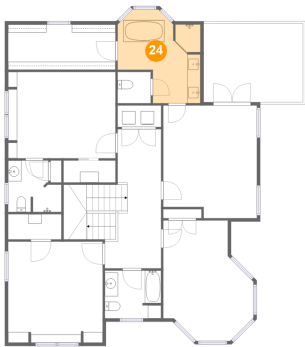
23 Floor 3 - W.I.C.



Max Dimensions: 16'2" x 6'9"  
Calculated Area: 111 sq. ft  
Included: Yes

Heated: Yes  
Finished: Yes  
Enclosed: Yes  
Contiguous: Yes  
Permitted: Yes  
Wet space: No  
Addition: No  
Conversion: No

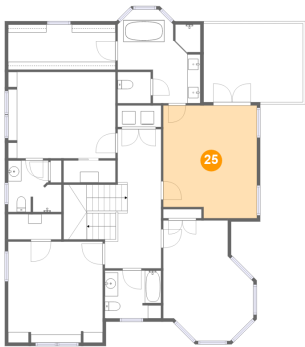
24 Floor 3 - Primary Bath



Max Dimensions: 12'6" x 14'2"  
Calculated Area: 134 sq. ft  
Included: Yes

Heated: Yes  
Finished: Yes  
Enclosed: Yes  
Contiguous: Yes  
Permitted: Yes  
Wet space: Yes  
Addition: No  
Conversion: No

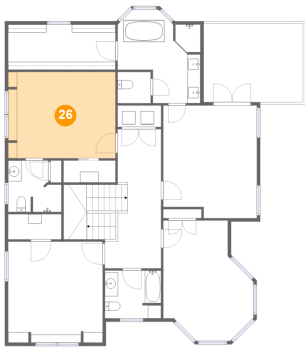
25 Floor 3 - Primary Bedroom



Max Dimensions: 14'2" x 17'0"  
Calculated Area: 230 sq. ft  
Included: Yes

Heated: Yes  
Finished: Yes  
Enclosed: Yes  
Contiguous: Yes  
Permitted: Yes  
Wet space: No  
Addition: No  
Conversion: No

26 Floor 3 - Bedroom



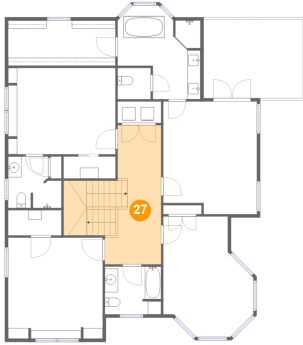
Max Dimensions: 16'2" x 13'0"  
Calculated Area: 210 sq. ft  
Included: Yes

Heated: Yes  
Finished: Yes  
Enclosed: Yes  
Contiguous: Yes  
Permitted: Yes  
Wet space: No  
Addition: No  
Conversion: No



6060 Roycroft Drive, Highfields, Cave Spring, Roanoke, Roanoke County, Virginia, United States, 24018

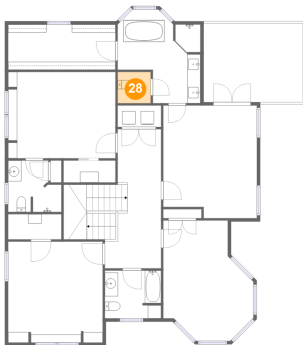
### 27 Floor 3 - Hall



Max Dimensions: 11'3" x 21'0"  
Calculated Area: 214 sq. ft  
Included: Yes

Heated: Yes  
Finished: Yes  
Enclosed: Yes  
Contiguous: Yes  
Permitted: Yes  
Wet space: No  
Addition: No  
Conversion: No

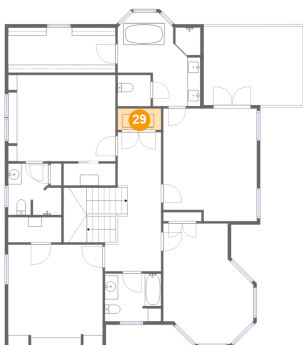
### 28 Floor 3 - WC



Max Dimensions: 5'0" x 4'9"  
Calculated Area: 24 sq. ft  
Included: Yes

Heated: Yes  
Finished: Yes  
Enclosed: Yes  
Contiguous: Yes  
Permitted: Yes  
Wet space: Yes  
Addition: No  
Conversion: No

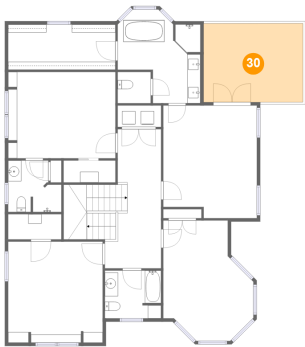
### 29 Floor 3 - Laundry



Max Dimensions: 6'7" x 3'3"  
Calculated Area: 21 sq. ft  
Included: Yes

Heated: Yes  
Finished: Yes  
Enclosed: Yes  
Contiguous: Yes  
Permitted: Yes  
Wet space: No  
Addition: No  
Conversion: No

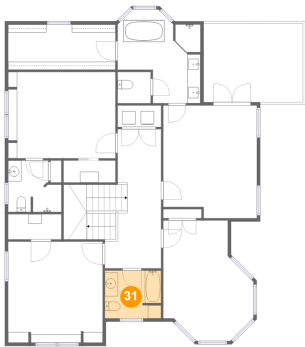
30 Floor 3 - Balcony



Max Dimensions: 15'0" x 11'11"  
Calculated Area: 178 sq. ft  
Included: No

Heated: No  
Finished: Yes  
Enclosed: No  
Contiguous: Yes  
Permitted: Yes  
Wet space: No  
Addition: No  
Conversion: No

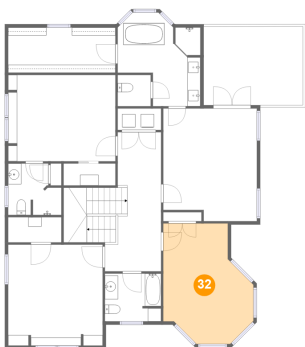
31 Floor 3 - Bath



Max Dimensions: 8'6" x 7'3"  
Calculated Area: 60 sq. ft  
Included: Yes

Heated: Yes  
Finished: Yes  
Enclosed: Yes  
Contiguous: Yes  
Permitted: Yes  
Wet space: Yes  
Addition: No  
Conversion: No

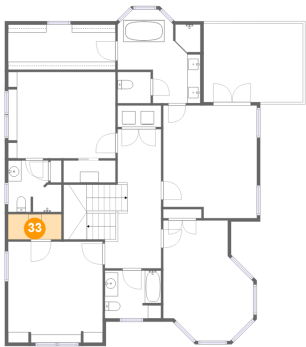
32 Floor 3 - Bedroom



Max Dimensions: 13'7" x 18'2"  
Calculated Area: 202 sq. ft  
Included: Yes

Heated: Yes  
Finished: Yes  
Enclosed: Yes  
Contiguous: Yes  
Permitted: Yes  
Wet space: No  
Addition: No  
Conversion: No

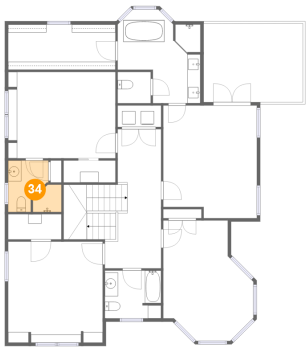
33 Floor 3 - W.I.C.



Max Dimensions: 8'0" x 3'10"  
Calculated Area: 31 sq. ft  
Included: Yes

Heated: Yes  
Finished: Yes  
Enclosed: Yes  
Contiguous: Yes  
Permitted: Yes  
Wet space: No  
Addition: No  
Conversion: No

34 Floor 3 - Bath



Max Dimensions: 8'0" x 7'9"  
Calculated Area: 54 sq. ft  
Included: Yes

Heated: Yes  
Finished: Yes  
Enclosed: Yes  
Contiguous: Yes  
Permitted: Yes  
Wet space: Yes  
Addition: No  
Conversion: No