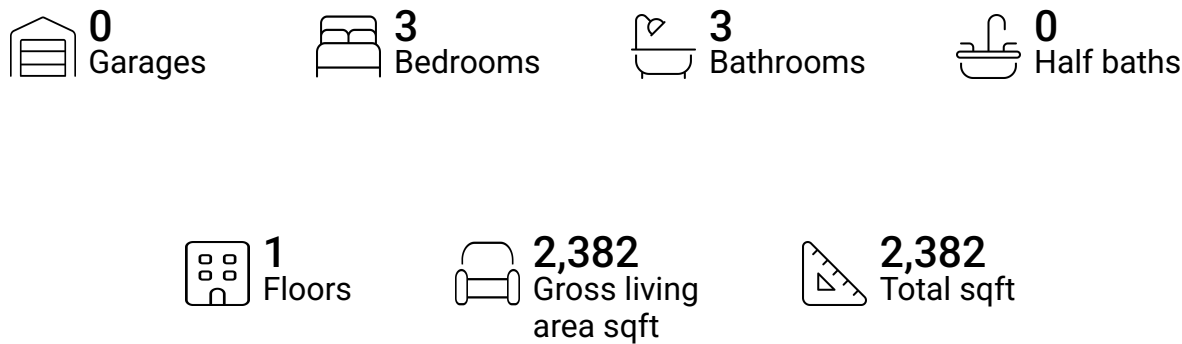


Home report

885 West 4th Street, Paso Robles, San Luis Obispo County,
California, United States, 93446



Property summary



**885 West 4th Street, Paso Robles, San Luis Obispo County,
California, United States, 93446**



Total sqft: 2382 Living area: 2382

Scan captured on Tue, 13 May 2025 02:24:14 GMT

Home report

885 West 4th Street, Paso Robles, San Luis Obispo County,
California, United States, 93446

#		Max Dimensions	sqft	Included
12	W.I.C.	6'5" x 8'4"	53 sq. ft	Yes
13	Bath	8'4" x 7'10"	55 sq. ft	Yes
14	W.I.C.	5'3" x 5'10"	31 sq. ft	Yes

885 West 4th Street, Paso Robles, San Luis Obispo County,
California, United States, 93446

1 Floor 1 - Bath



Max Dimensions: 8'1" x 8'4"
Calculated Area: 63 sq. ft
Included: Yes

Heated: Yes
Finished: Yes
Enclosed: Yes
Contiguous: Yes
Permitted: Yes
Wet space: Yes
Addition: No
Conversion: No

2 Floor 1 - Utility

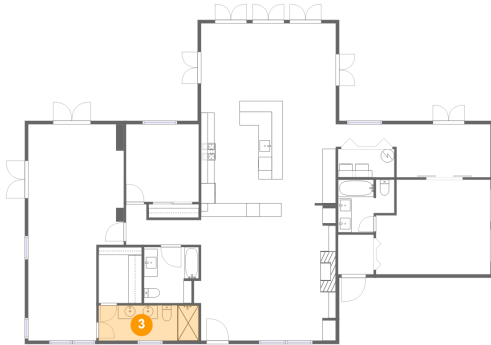


Max Dimensions: 8'4" x 4'2"
Calculated Area: 35 sq. ft
Included: Yes

Heated: Yes
Finished: Yes
Enclosed: Yes
Contiguous: Yes
Permitted: Yes
Wet space: No
Addition: No
Conversion: No

885 West 4th Street, Paso Robles, San Luis Obispo County,
California, United States, 93446

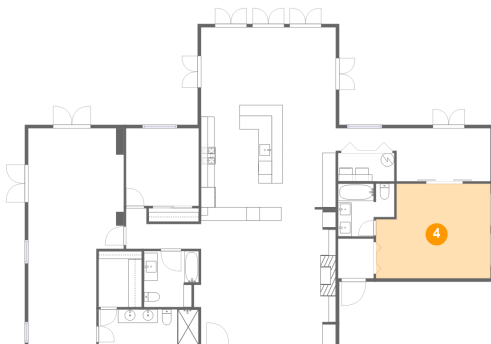
3 Floor 1 - Bath



Max Dimensions: 14'10" x 5'3"
Calculated Area: 77 sq. ft
Included: Yes

Heated: Yes
Finished: Yes
Enclosed: Yes
Contiguous: Yes
Permitted: Yes
Wet space: Yes
Addition: No
Conversion: No

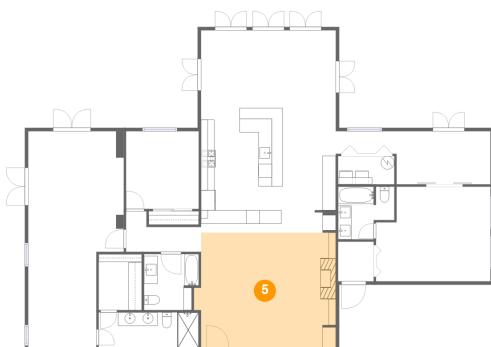
4 Floor 1 - Bedroom



Max Dimensions: 17'0" x 14'0"
Calculated Area: 221 sq. ft
Included: Yes

Heated: Yes
Finished: Yes
Enclosed: Yes
Contiguous: Yes
Permitted: Yes
Wet space: No
Addition: No
Conversion: No

5 Floor 1 - Living Room

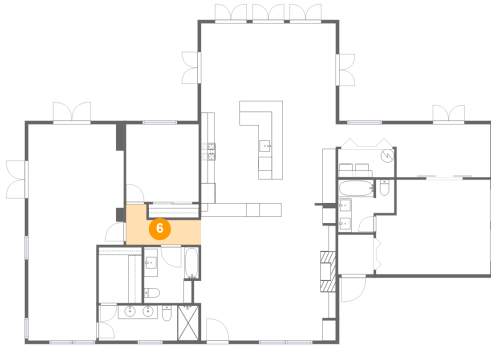


Max Dimensions: 21'0" x 17'0"
Calculated Area: 343 sq. ft
Included: Yes

Heated: Yes
Finished: Yes
Enclosed: Yes
Contiguous: Yes
Permitted: Yes
Wet space: No
Addition: No
Conversion: No

885 West 4th Street, Paso Robles, San Luis Obispo County,
California, United States, 93446

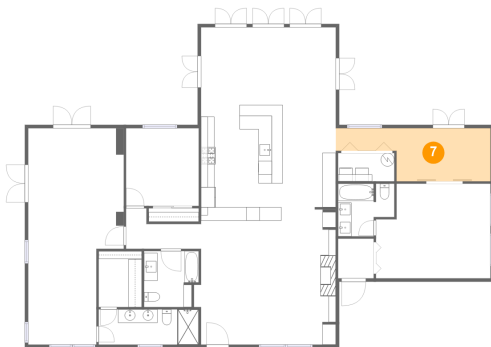
6 Floor 1 - Hall



Max Dimensions: 11'1" x 6'0"
Calculated Area: 48 sq. ft
Included: Yes

Heated: Yes
Finished: Yes
Enclosed: Yes
Contiguous: Yes
Permitted: Yes
Wet space: No
Addition: No
Conversion: No

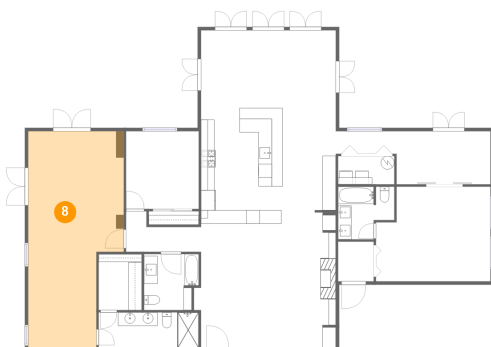
7 Floor 1 - Sitting Room



Max Dimensions: 22'11" x 7'10"
Calculated Area: 140 sq. ft
Included: Yes

Heated: Yes
Finished: Yes
Enclosed: Yes
Contiguous: Yes
Permitted: Yes
Wet space: No
Addition: No
Conversion: No

8 Floor 1 - Primary Bedroom

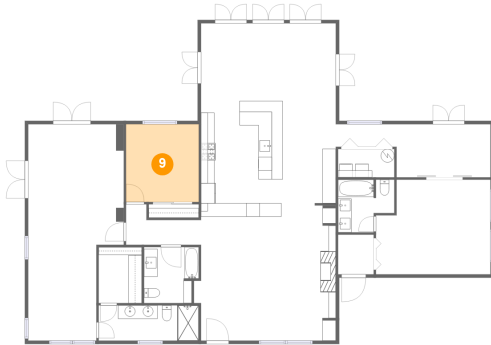


Max Dimensions: 14'2" x 32'0"
Calculated Area: 396 sq. ft
Included: Yes

Heated: Yes
Finished: Yes
Enclosed: Yes
Contiguous: Yes
Permitted: Yes
Wet space: No
Addition: No
Conversion: No

885 West 4th Street, Paso Robles, San Luis Obispo County,
California, United States, 93446

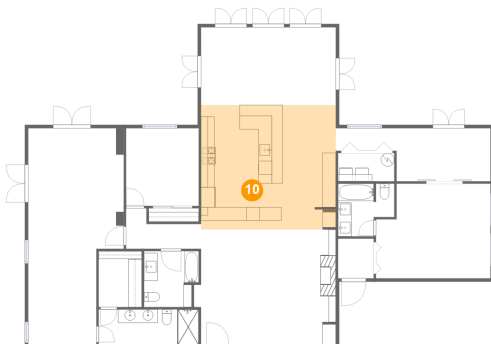
9 Floor 1 - Bedroom



Max Dimensions: 10'9" x 11'6"
Calculated Area: 124 sq. ft
Included: Yes

Heated: Yes
Finished: Yes
Enclosed: Yes
Contiguous: Yes
Permitted: Yes
Wet space: No
Addition: No
Conversion: No

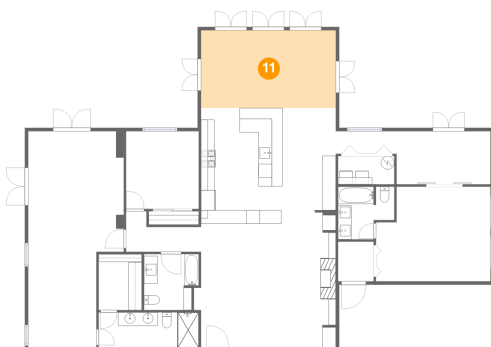
10 Floor 1 - Kitchen



Max Dimensions: 19'11" x 18'5"
Calculated Area: 366 sq. ft
Included: Yes

Heated: Yes
Finished: Yes
Enclosed: Yes
Contiguous: Yes
Permitted: Yes
Wet space: No
Addition: No
Conversion: No

11 Floor 1 - Dining Area



Max Dimensions: 19'11" x 11'6"
Calculated Area: 230 sq. ft
Included: Yes

Heated: Yes
Finished: Yes
Enclosed: Yes
Contiguous: Yes
Permitted: Yes
Wet space: No
Addition: No
Conversion: No

Home report

885 West 4th Street, Paso Robles, San Luis Obispo County,
California, United States, 93446

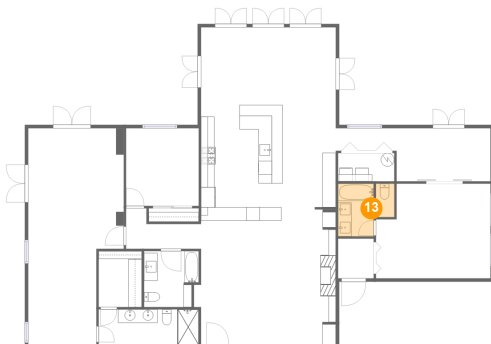
12 Floor 1 - W.I.C.



Max Dimensions: 6'5" x 8'4"
Calculated Area: 53 sq. ft
Included: Yes

Heated: Yes
Finished: Yes
Enclosed: Yes
Contiguous: Yes
Permitted: Yes
Wet space: No
Addition: No
Conversion: No

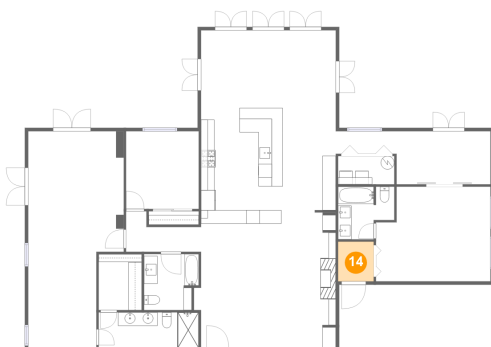
13 Floor 1 - Bath



Max Dimensions: 8'4" x 7'10"
Calculated Area: 55 sq. ft
Included: Yes

Heated: Yes
Finished: Yes
Enclosed: Yes
Contiguous: Yes
Permitted: Yes
Wet space: Yes
Addition: No
Conversion: No

14 Floor 1 - W.I.C.



Max Dimensions: 5'3" x 5'10"
Calculated Area: 31 sq. ft
Included: Yes

Heated: Yes
Finished: Yes
Enclosed: Yes
Contiguous: Yes
Permitted: Yes
Wet space: No
Addition: No
Conversion: No