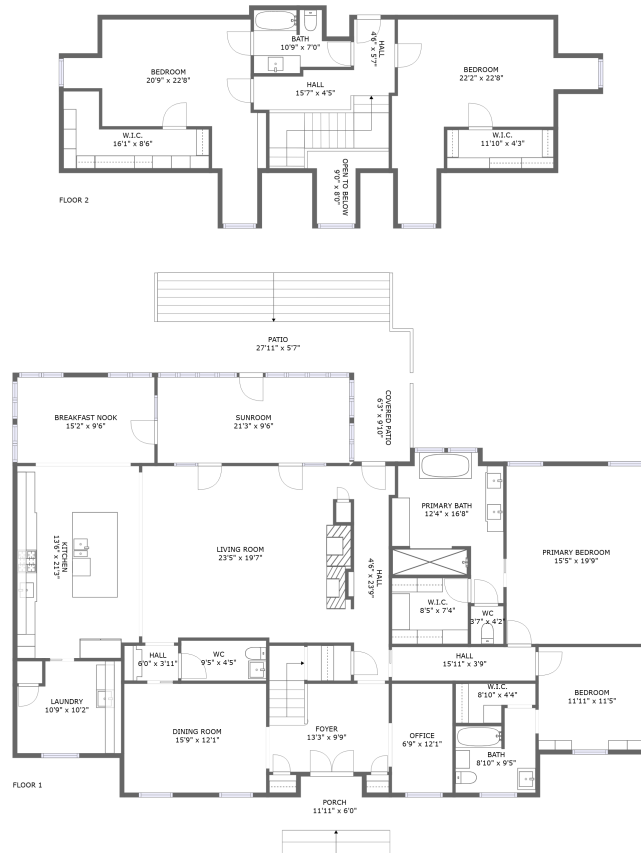



# 1608 Woodland Street Southeast, Decatur, Alabama 35601, United States



## Property summary


 **0** Garages

 **4** Bedrooms

 **3** Bathrooms

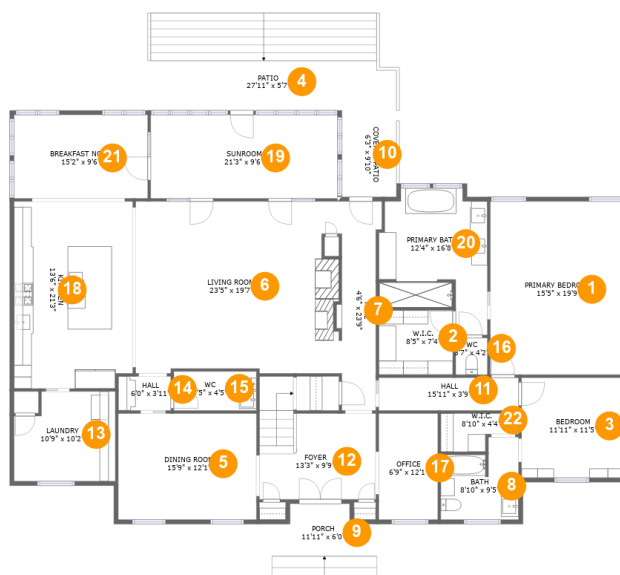
 **1** Half baths

 **2** Floors

 **3,837** Gross living area sqft

 **4,230** Total sqft

# 1608 Woodland Street Southeast, Decatur, Alabama 35601, United States



## Room dimensions

Floor 1

Total sqft: 3161 Living area: 2885

#		Dimensions	sqft	Counted as living area
1	Primary Bedroom	15'5" x 19'9"	304 sq. ft	Yes
2	W.I.C.	8'5" x 7'4"	62 sq. ft	Yes
3	Bedroom	11'11" x 11'5"	135 sq. ft	Yes
4	Patio	27'11" x 5'7"	156 sq. ft	No
5	Dining Room	15'9" x 12'1"	190 sq. ft	Yes
6	Living Room	23'5" x 19'7"	441 sq. ft	Yes
7	Hall	4'6" x 23'9"	96 sq. ft	Yes
8	Bath	8'10" x 9'5"	71 sq. ft	Yes
9	Porch	11'11" x 6'0"	59 sq. ft	No
10	Covered Patio	6'3" x 9'10"	61 sq. ft	No
11	Hall	15'11" x 3'9"	59 sq. ft	Yes

**1608 Woodland Street Southeast, Decatur, Alabama  
35601, United States**

#		Dimensions	sqft	Counted as living area
12	Foyer	13'3" x 9'9"	146 sq. ft	Yes
13	Laundry	10'9" x 10'2"	109 sq. ft	Yes
14	Hall	6'0" x 3'11"	23 sq. ft	Yes
15	WC	9'5" x 4'5"	42 sq. ft	Yes
16	WC	3'7" x 4'2"	15 sq. ft	Yes
17	Office	6'9" x 12'1"	81 sq. ft	Yes
18	Kitchen	13'6" x 21'3"	284 sq. ft	Yes
19	Sunroom	21'3" x 9'6"	202 sq. ft	Yes
20	Primary Bath	12'4" x 16'8"	166 sq. ft	Yes
21	Breakfast Nook	15'2" x 9'6"	144 sq. ft	Yes
22	W.I.C.	8'10" x 4'4"	31 sq. ft	Yes

# 1608 Woodland Street Southeast, Decatur, Alabama 35601, United States



## Room dimensions

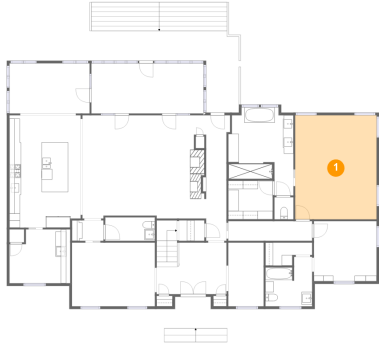
Floor 2

Total sqft: 1069 Living area: 952

#		Dimensions	sqft	Counted as living area
23	W.I.C.	11'10" x 4'3"	36 sq. ft	Yes
24	Bedroom	22'2" x 22'8"	278 sq. ft	Yes
25	W.I.C.	16'1" x 8'6"	57 sq. ft	Yes
26	Bedroom	20'9" x 22'8"	264 sq. ft	Yes
27	Open To Below	9'0" x 8'0"	44 sq. ft	No
28	Bath	10'9" x 7'0"	60 sq. ft	Yes
29	Hall	15'7" x 4'5"	133 sq. ft	Yes
30	Hall	4'6" x 5'7"	25 sq. ft	Yes

# 1608 Woodland Street Southeast, Decatur, Alabama 35601, United States

## 1 Floor 1 - Primary Bedroom



**Dimensions:** 15'5" x 19'9"  
**Area:** 304 sq. ft  
**Counted as living area:** Yes

**Heated:** Yes  
**Finished:** Yes  
**Enclosed:** Yes  
**Contiguous:** Yes  
**Permitted:** Yes  
**Wet space:** No  
**Addition:** No  
**Conversion:** No

## 2 Floor 1 - W.I.C.



**Dimensions:** 8'5" x 7'4"  
**Area:** 62 sq. ft  
**Counted as living area:** Yes

**Heated:** Yes  
**Finished:** Yes  
**Enclosed:** Yes  
**Contiguous:** Yes  
**Permitted:** Yes  
**Wet space:** No  
**Addition:** No  
**Conversion:** No

# 1608 Woodland Street Southeast, Decatur, Alabama 35601, United States

## 3 Floor 1 - Bedroom



Dimensions: 11'11" x 11'5"  
Area: 135 sq. ft  
Counted as living area: Yes

Heated: Yes  
Finished: Yes  
Enclosed: Yes  
Contiguous: Yes  
Permitted: Yes  
Wet space: No  
Addition: No  
Conversion: No

## 4 Floor 1 - Patio



Dimensions: 27'11" x 5'7"  
Area: 156 sq. ft  
Counted as living area: No

Heated: No  
Finished: Yes  
Enclosed: No  
Contiguous: Yes  
Permitted: Yes  
Wet space: No  
Addition: No  
Conversion: No

## 5 Floor 1 - Dining Room

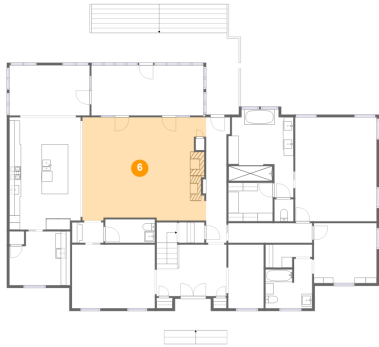


Dimensions: 15'9" x 12'1"  
Area: 190 sq. ft  
Counted as living area: Yes

Heated: Yes  
Finished: Yes  
Enclosed: Yes  
Contiguous: Yes  
Permitted: Yes  
Wet space: No  
Addition: No  
Conversion: No

# 1608 Woodland Street Southeast, Decatur, Alabama 35601, United States

## 6 Floor 1 - Living Room



Dimensions: 23'5" x 19'7"  
Area: 441 sq. ft  
Counted as living area: Yes

Heated: Yes  
Finished: Yes  
Enclosed: Yes  
Contiguous: Yes  
Permitted: Yes  
Wet space: No  
Addition: No  
Conversion: No

## 7 Floor 1 - Hall



Dimensions: 4'6" x 23'9"  
Area: 96 sq. ft  
Counted as living area: Yes

Heated: Yes  
Finished: Yes  
Enclosed: Yes  
Contiguous: Yes  
Permitted: Yes  
Wet space: No  
Addition: No  
Conversion: No

## 8 Floor 1 - Bath



Dimensions: 8'10" x 9'5"  
Area: 71 sq. ft  
Counted as living area: Yes

Heated: Yes  
Finished: Yes  
Enclosed: Yes  
Contiguous: Yes  
Permitted: Yes  
Wet space: Yes  
Addition: No  
Conversion: No

# 1608 Woodland Street Southeast, Decatur, Alabama 35601, United States

## 9 Floor 1 - Porch



Dimensions: 11'11" x 6'0"  
Area: 59 sq. ft  
Counted as living area: No

Heated: No  
Finished: Yes  
Enclosed: No  
Contiguous: Yes  
Permitted: Yes  
Wet space: No  
Addition: No  
Conversion: No

## 10 Floor 1 - Covered Patio



Dimensions: 6'3" x 9'10"  
Area: 61 sq. ft  
Counted as living area: No

Heated: No  
Finished: Yes  
Enclosed: No  
Contiguous: Yes  
Permitted: Yes  
Wet space: No  
Addition: No  
Conversion: No

## 11 Floor 1 - Hall



Dimensions: 15'11" x 3'9"  
Area: 59 sq. ft  
Counted as living area: Yes

Heated: Yes  
Finished: Yes  
Enclosed: Yes  
Contiguous: Yes  
Permitted: Yes  
Wet space: No  
Addition: No  
Conversion: No



# 1608 Woodland Street Southeast, Decatur, Alabama 35601, United States

## 12 Floor 1 - Foyer



Dimensions: 13'3" x 9'9"  
Area: 146 sq. ft  
Counted as living area: Yes

Heated: Yes  
Finished: Yes  
Enclosed: Yes  
Contiguous: Yes  
Permitted: Yes  
Wet space: No  
Addition: No  
Conversion: No

## 13 Floor 1 - Laundry



Dimensions: 10'9" x 10'2"  
Area: 109 sq. ft  
Counted as living area: Yes

Heated: Yes  
Finished: Yes  
Enclosed: Yes  
Contiguous: Yes  
Permitted: Yes  
Wet space: No  
Addition: No  
Conversion: No

## 14 Floor 1 - Hall



Dimensions: 6'0" x 3'11"  
Area: 23 sq. ft  
Counted as living area: Yes

Heated: Yes  
Finished: Yes  
Enclosed: Yes  
Contiguous: Yes  
Permitted: Yes  
Wet space: No  
Addition: No  
Conversion: No

# 1608 Woodland Street Southeast, Decatur, Alabama 35601, United States

## 15 Floor 1 - WC



Dimensions: 9'5" x 4'5"  
Area: 42 sq. ft  
Counted as living area: Yes

Heated: Yes  
Finished: Yes  
Enclosed: Yes  
Contiguous: Yes  
Permitted: Yes  
Wet space: Yes  
Addition: No  
Conversion: No

## 16 Floor 1 - WC



Dimensions: 3'7" x 4'2"  
Area: 15 sq. ft  
Counted as living area: Yes

Heated: Yes  
Finished: Yes  
Enclosed: Yes  
Contiguous: Yes  
Permitted: Yes  
Wet space: Yes  
Addition: No  
Conversion: No

## 17 Floor 1 - Office

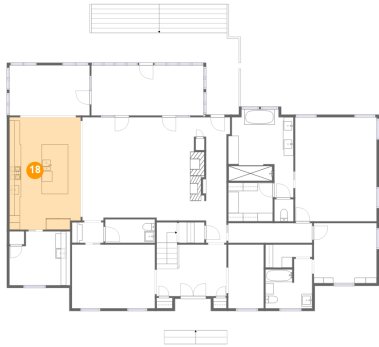


Dimensions: 6'9" x 12'1"  
Area: 81 sq. ft  
Counted as living area: Yes

Heated: Yes  
Finished: Yes  
Enclosed: Yes  
Contiguous: Yes  
Permitted: Yes  
Wet space: No  
Addition: No  
Conversion: No

**1608 Woodland Street Southeast, Decatur, Alabama  
35601, United States**

**18 Floor 1 - Kitchen**



**Dimensions:** 13'6" x 21'3"  
**Area:** 284 sq. ft  
**Counted as living area:** Yes

**Heated:** Yes  
**Finished:** Yes  
**Enclosed:** Yes  
**Contiguous:** Yes  
**Permitted:** Yes  
**Wet space:** No  
**Addition:** No  
**Conversion:** No

**19 Floor 1 - Sunroom**



**Dimensions:** 21'3" x 9'6"  
**Area:** 202 sq. ft  
**Counted as living area:** Yes

**Heated:** Yes  
**Finished:** Yes  
**Enclosed:** Yes  
**Contiguous:** Yes  
**Permitted:** Yes  
**Wet space:** No  
**Addition:** No  
**Conversion:** No

**20 Floor 1 - Primary Bath**



**Dimensions:** 12'4" x 16'8"  
**Area:** 166 sq. ft  
**Counted as living area:** Yes

**Heated:** Yes  
**Finished:** Yes  
**Enclosed:** Yes  
**Contiguous:** Yes  
**Permitted:** Yes  
**Wet space:** Yes  
**Addition:** No  
**Conversion:** No

# 1608 Woodland Street Southeast, Decatur, Alabama 35601, United States

## 21 Floor 1 - Breakfast Nook



Dimensions: 15'2" x 9'6"  
Area: 144 sq. ft  
Counted as living area: Yes

Heated: Yes  
Finished: Yes  
Enclosed: Yes  
Contiguous: Yes  
Permitted: Yes  
Wet space: No  
Addition: No  
Conversion: No

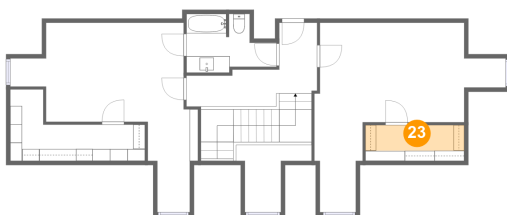
## 22 Floor 1 - W.I.C.



Dimensions: 8'10" x 4'4"  
Area: 31 sq. ft  
Counted as living area: Yes

Heated: Yes  
Finished: Yes  
Enclosed: Yes  
Contiguous: Yes  
Permitted: Yes  
Wet space: No  
Addition: No  
Conversion: No

## 23 Floor 2 - W.I.C.

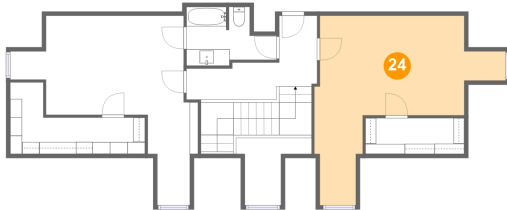


Dimensions: 11'10" x 4'3"  
Area: 36 sq. ft  
Counted as living area: Yes

Heated: Yes  
Finished: Yes  
Enclosed: Yes  
Contiguous: Yes  
Permitted: Yes  
Wet space: No  
Addition: No  
Conversion: No

**1608 Woodland Street Southeast, Decatur, Alabama  
35601, United States**

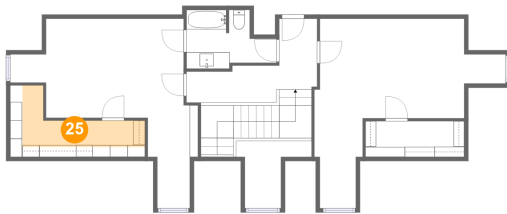
**24 Floor 2 - Bedroom**



Dimensions: 22'2" x 22'8"  
Area: 278 sq. ft  
Counted as living area: Yes

Heated: Yes  
Finished: Yes  
Enclosed: Yes  
Contiguous: Yes  
Permitted: Yes  
Wet space: No  
Addition: No  
Conversion: No

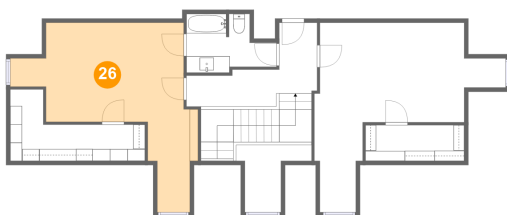
**25 Floor 2 - W.I.C.**



Dimensions: 16'1" x 8'6"  
Area: 57 sq. ft  
Counted as living area: Yes

Heated: Yes  
Finished: Yes  
Enclosed: Yes  
Contiguous: Yes  
Permitted: Yes  
Wet space: No  
Addition: No  
Conversion: No

**26 Floor 2 - Bedroom**

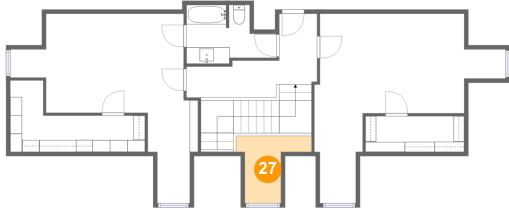


Dimensions: 20'9" x 22'8"  
Area: 264 sq. ft  
Counted as living area: Yes

Heated: Yes  
Finished: Yes  
Enclosed: Yes  
Contiguous: Yes  
Permitted: Yes  
Wet space: No  
Addition: No  
Conversion: No

# 1608 Woodland Street Southeast, Decatur, Alabama 35601, United States

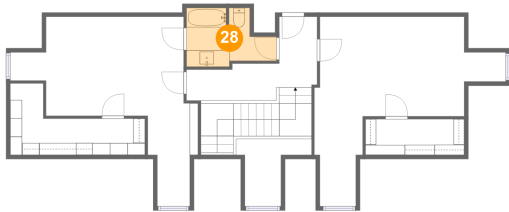
## 27 Floor 2 - Open To Below



Dimensions: 9'0" x 8'0"  
Area: 44 sq. ft  
Counted as living area: No

Heated: No  
Finished: No  
Enclosed: No  
Contiguous: Yes  
Permitted: No  
Wet space: No  
Addition: No  
Conversion: No

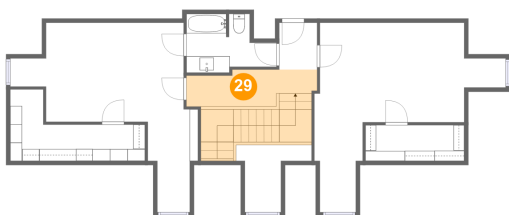
## 28 Floor 2 - Bath



Dimensions: 10'9" x 7'0"  
Area: 60 sq. ft  
Counted as living area: Yes

Heated: Yes  
Finished: Yes  
Enclosed: Yes  
Contiguous: Yes  
Permitted: Yes  
Wet space: Yes  
Addition: No  
Conversion: No

## 29 Floor 2 - Hall

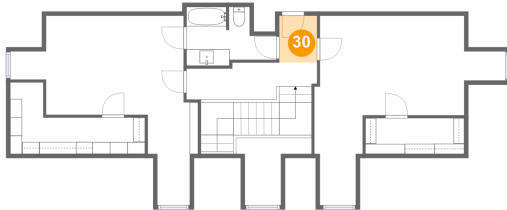


Dimensions: 15'7" x 4'5"  
Area: 133 sq. ft  
Counted as living area: Yes

Heated: Yes  
Finished: Yes  
Enclosed: Yes  
Contiguous: Yes  
Permitted: Yes  
Wet space: No  
Addition: No  
Conversion: No

**1608 Woodland Street Southeast, Decatur, Alabama  
35601, United States**

**30 Floor 2 - Hall**



**Dimensions: 4'6" x 5'7"**  
**Area: 25 sq. ft**  
**Counted as living area: Yes**

**Heated: Yes**  
**Finished: Yes**  
**Enclosed: Yes**  
**Contiguous: Yes**  
**Permitted: Yes**  
**Wet space: No**  
**Addition: No**  
**Conversion: No**