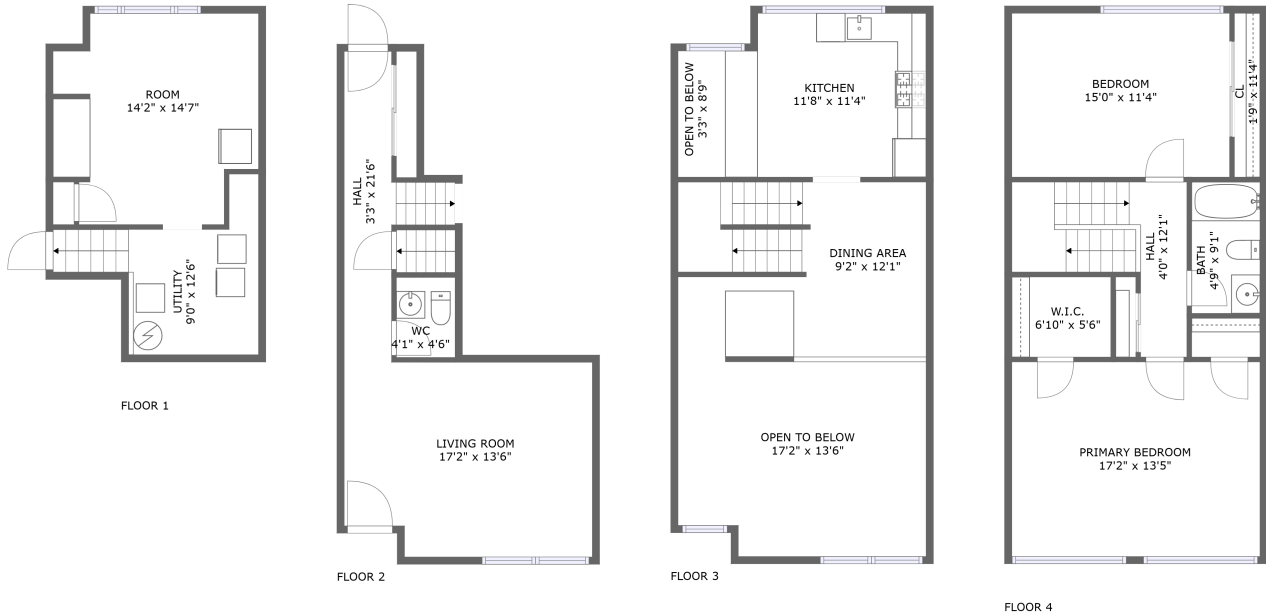



# 186 Hamilton Place, Twin Rivers, East Windsor, Mercer County, New Jersey, United States, 08520



## Property summary

 **0** Garages

 **2** Bedrooms

 **1** Bathrooms

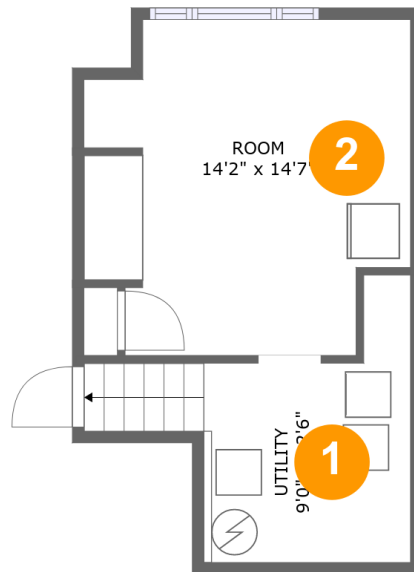
 **1** Half baths

 **4** Floors

 **1,116** Gross living area sqft

 **2,132** Total sqft

**186 Hamilton Place, Twin Rivers, East Windsor,  
Mercer County, New Jersey, United States, 08520**



## Room dimensions

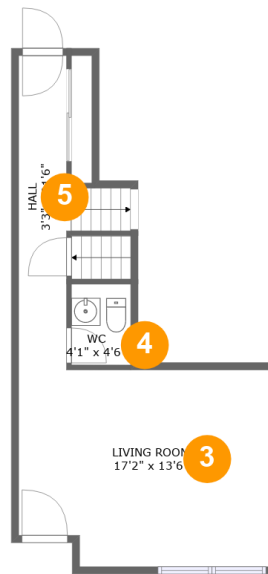
Floor 1

Total sqft: 338

Living area: 0

#		Dimensions	sqft	Counted as living area
1	Utility	9'0" x 12'6"	101 sq. ft	No
2	Room	14'2" x 14'7"	185 sq. ft	No

**186 Hamilton Place, Twin Rivers, East Windsor,  
Mercer County, New Jersey, United States, 08520**



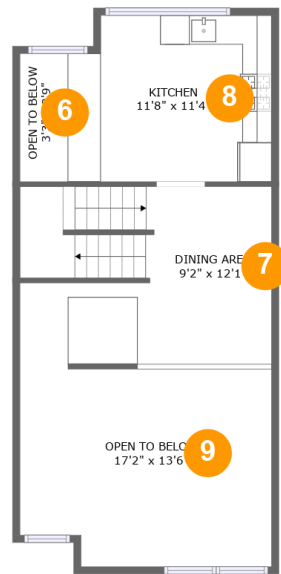
## Room dimensions

Floor 2

Total sqft: 416 Living area: 416

#		Dimensions	sqft	Counted as living area
3	Living Room	17'2" x 13'6"	222 sq. ft	Yes
4	WC	4'1" x 4'6"	22 sq. ft	Yes
5	Hall	3'3" x 21'6"	83 sq. ft	Yes

# 186 Hamilton Place, Twin Rivers, East Windsor, Mercer County, New Jersey, United States, 08520



## Room dimensions

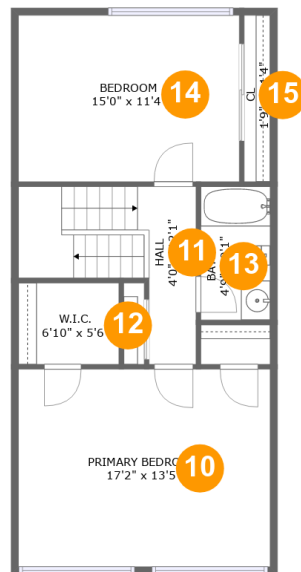
Floor 3

Total sqft: 678

Living area: 0

#		Dimensions	sqft	Counted as living area
6	Open To Below	3'3" x 8'9"	29 sq. ft	No
7	Dining Area	9'2" x 12'1"	191 sq. ft	No
8	Kitchen	11'8" x 11'4"	151 sq. ft	No
9	Open To Below	17'2" x 13'6"	241 sq. ft	No

# 186 Hamilton Place, Twin Rivers, East Windsor, Mercer County, New Jersey, United States, 08520



## Room dimensions

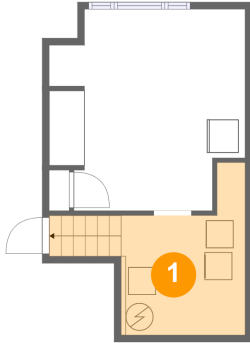
Floor 4

Total sqft: 700 Living area: 700

#		Dimensions	sqft	Counted as living area
10	Primary Bedroom	17'2" x 13'5"	231 sq. ft	Yes
11	Hall	4'0" x 12'1"	94 sq. ft	Yes
12	W.I.C.	6'10" x 5'6"	38 sq. ft	Yes
13	Bath	4'9" x 9'1"	43 sq. ft	Yes
14	Bedroom	15'0" x 11'4"	171 sq. ft	Yes
15	Cl	1'9" x 11'4"	20 sq. ft	Yes

**186 Hamilton Place, Twin Rivers, East Windsor,  
Mercer County, New Jersey, United States, 08520**

## 1 Floor 1 - Utility



**Dimensions:** 9'0" x 12'6"  
**Area:** 101 sq. ft  
**Counted as living area:** No

**Heated:** Yes  
**Finished:** No  
**Enclosed:** Yes  
**Contiguous:** Yes  
**Permitted:** Yes  
**Wet space:** No  
**Addition:** No  
**Conversion:** No

## 2 Floor 1 - Room

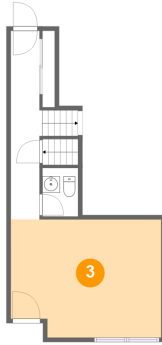


**Dimensions:** 14'2" x 14'7"  
**Area:** 185 sq. ft  
**Counted as living area:** No

**Heated:** Yes  
**Finished:** Yes  
**Enclosed:** Yes  
**Contiguous:** No  
**Permitted:** Yes  
**Wet space:** No  
**Addition:** No  
**Conversion:** No

**186 Hamilton Place, Twin Rivers, East Windsor,  
Mercer County, New Jersey, United States, 08520**

**3 Floor 2 - Living Room**



Dimensions: 17'2" x 13'6"  
Area: 222 sq. ft  
Counted as living area: Yes

Heated: Yes  
Finished: Yes  
Enclosed: Yes  
Contiguous: Yes  
Permitted: Yes  
Wet space: No  
Addition: No  
Conversion: No

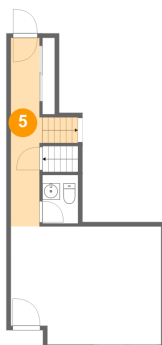
**4 Floor 2 - WC**



Dimensions: 4'1" x 4'6"  
Area: 22 sq. ft  
Counted as living area: Yes

Heated: Yes  
Finished: Yes  
Enclosed: Yes  
Contiguous: Yes  
Permitted: Yes  
Wet space: Yes  
Addition: No  
Conversion: No

**5 Floor 2 - Hall**



Dimensions: 3'3" x 21'6"  
Area: 83 sq. ft  
Counted as living area: Yes

Heated: Yes  
Finished: Yes  
Enclosed: Yes  
Contiguous: Yes  
Permitted: Yes  
Wet space: No  
Addition: No  
Conversion: No

**186 Hamilton Place, Twin Rivers, East Windsor,  
Mercer County, New Jersey, United States, 08520**

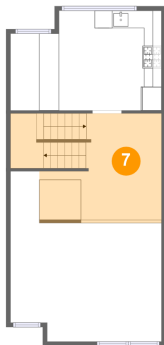
**6 Floor 3 - Open To Below**



Dimensions: 3'3" x 8'9"  
Area: 29 sq. ft  
Counted as living area: No

Heated: No  
Finished: No  
Enclosed: No  
Contiguous: Yes  
Permitted: No  
Wet space: No  
Addition: No  
Conversion: No

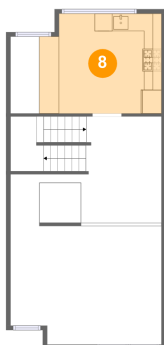
**7 Floor 3 - Dining Area**



Dimensions: 9'2" x 12'1"  
Area: 191 sq. ft  
Counted as living area: No

Heated: Yes  
Finished: Yes  
Enclosed: Yes  
Contiguous: No  
Permitted: Yes  
Wet space: No  
Addition: No  
Conversion: No

**8 Floor 3 - Kitchen**



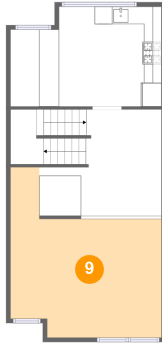
Dimensions: 11'8" x 11'4"  
Area: 151 sq. ft  
Counted as living area: No

Heated: Yes  
Finished: Yes  
Enclosed: Yes  
Contiguous: No  
Permitted: Yes  
Wet space: No  
Addition: No  
Conversion: No



# 186 Hamilton Place, Twin Rivers, East Windsor, Mercer County, New Jersey, United States, 08520

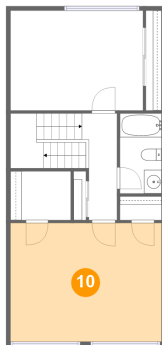
## 9 Floor 3 - Open To Below



Dimensions: 17'2" x 13'6"  
Area: 241 sq. ft  
Counted as living area: No

Heated: No  
Finished: No  
Enclosed: No  
Contiguous: Yes  
Permitted: No  
Wet space: No  
Addition: No  
Conversion: No

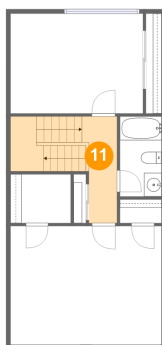
## 10 Floor 4 - Primary Bedroom



Dimensions: 17'2" x 13'5"  
Area: 231 sq. ft  
Counted as living area: Yes

Heated: Yes  
Finished: Yes  
Enclosed: Yes  
Contiguous: Yes  
Permitted: Yes  
Wet space: No  
Addition: No  
Conversion: No

## 11 Floor 4 - Hall



Dimensions: 4'0" x 12'1"  
Area: 94 sq. ft  
Counted as living area: Yes

Heated: Yes  
Finished: Yes  
Enclosed: Yes  
Contiguous: Yes  
Permitted: Yes  
Wet space: No  
Addition: No  
Conversion: No

**186 Hamilton Place, Twin Rivers, East Windsor,  
Mercer County, New Jersey, United States, 08520**

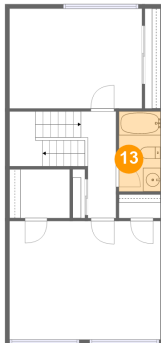
**12 Floor 4 - W.I.C.**



Dimensions: 6'10" x 5'6"  
Area: 38 sq. ft  
Counted as living area: Yes

Heated: Yes  
Finished: Yes  
Enclosed: Yes  
Contiguous: Yes  
Permitted: Yes  
Wet space: No  
Addition: No  
Conversion: No

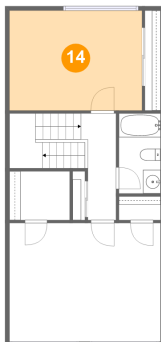
**13 Floor 4 - Bath**



Dimensions: 4'9" x 9'1"  
Area: 43 sq. ft  
Counted as living area: Yes

Heated: Yes  
Finished: Yes  
Enclosed: Yes  
Contiguous: Yes  
Permitted: Yes  
Wet space: Yes  
Addition: No  
Conversion: No

**14 Floor 4 - Bedroom**

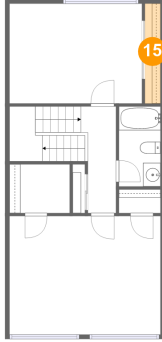


Dimensions: 15'0" x 11'4"  
Area: 171 sq. ft  
Counted as living area: Yes

Heated: Yes  
Finished: Yes  
Enclosed: Yes  
Contiguous: Yes  
Permitted: Yes  
Wet space: No  
Addition: No  
Conversion: No

**186 Hamilton Place, Twin Rivers, East Windsor,  
Mercer County, New Jersey, United States, 08520**

**15 Floor 4 - Cl**



**Dimensions: 1'9" x 11'4"**  
**Area: 20 sq. ft**  
**Counted as living area: Yes**

**Heated: Yes**  
**Finished: Yes**  
**Enclosed: Yes**  
**Contiguous: Yes**  
**Permitted: Yes**  
**Wet space: No**  
**Addition: No**  
**Conversion: No**