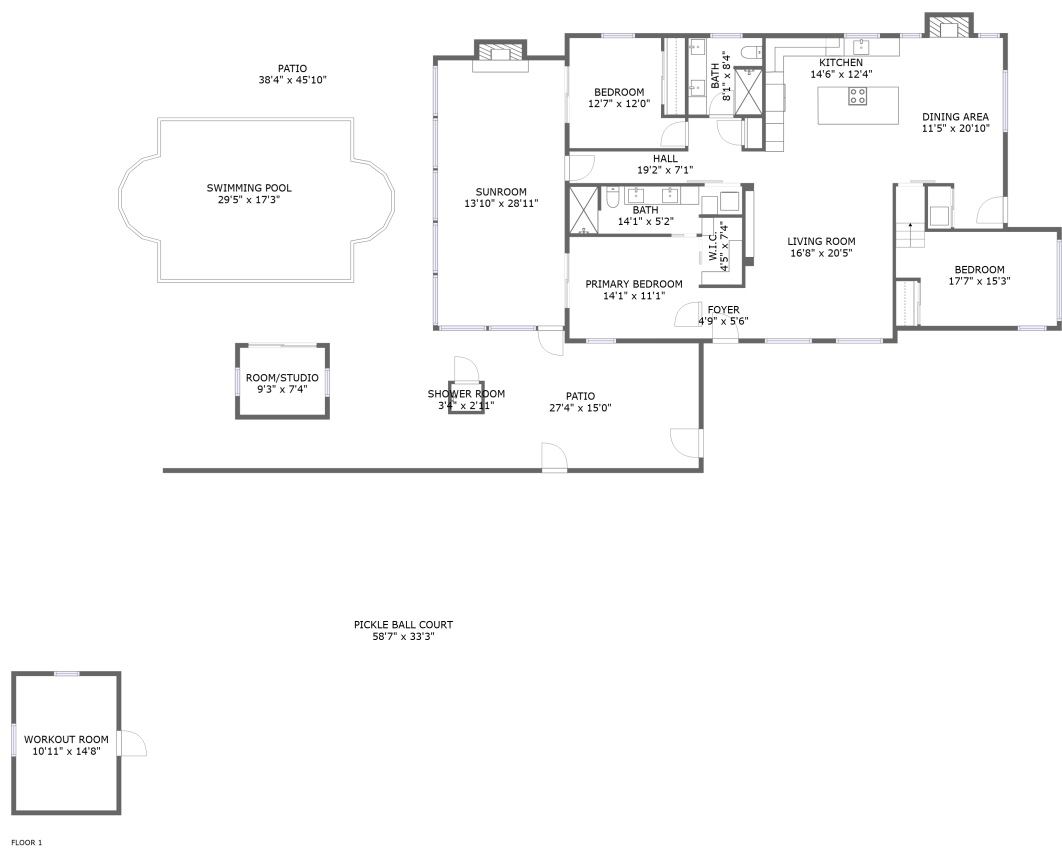


Home report

1019 Union Street, Edgewater Drive, Clearwater, Pinellas County,
Florida, United States, 33755



Total Area: 2246 sq. ft
Floor 1: 2246 sq. ft
Excluded: Patio 1445 sq. ft, Fireplace 22 sq. ft, Walls: 163 sq. ft

Property summary

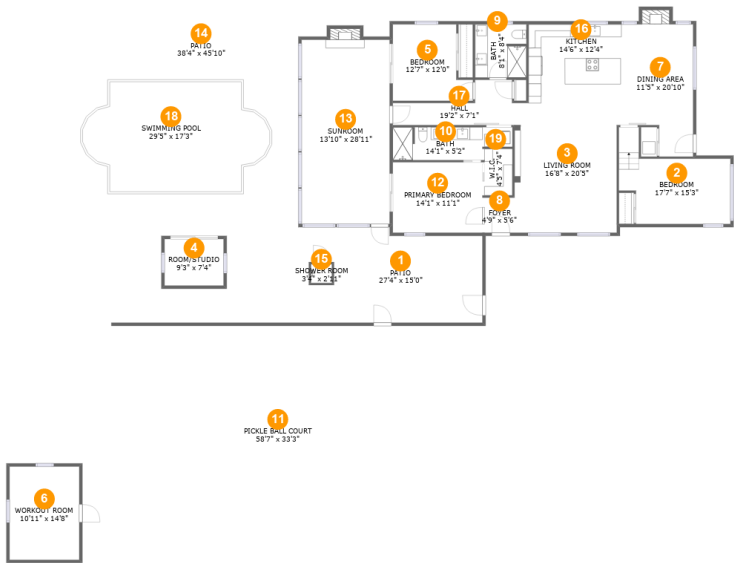
 **1** Floors

 **3** Bedrooms

 **2** Bathrooms

Home report

1019 Union Street, Edgewater Drive, Clearwater, Pinellas County, Florida, United States, 33755



Room dimensions

Floor 1 Total:2246sqft Excluded: 1467sqft

| # | | Max Dimensions | sqft | Included |
|----|-------------------|----------------|-------------|----------|
| 1 | Patio | 27'4" x 15'0" | 375 sq. ft | No |
| 2 | Bedroom | 17'7" x 15'3" | 182 sq. ft | Yes |
| 3 | Living Room | 16'8" x 20'5" | 330 sq. ft | Yes |
| 4 | ROOM/STUDIO | 9'3" x 7'4" | 68 sq. ft | Yes |
| 5 | Bedroom | 12'7" x 12'0" | 129 sq. ft | Yes |
| 6 | Workout Room | 10'11" x 14'8" | 161 sq. ft | Yes |
| 7 | Dining Area | 11'5" x 20'10" | 217 sq. ft | Yes |
| 8 | Foyer | 4'9" x 5'6" | 26 sq. ft | Yes |
| 9 | Bath | 8'1" x 8'4" | 67 sq. ft | Yes |
| 10 | Bath | 14'1" x 5'2" | 72 sq. ft | Yes |
| 11 | Pickle Ball Court | 58'7" x 33'3" | 1850 sq. ft | No |

Home report

**1019 Union Street, Edgewater Drive, Clearwater, Pinellas County,
Florida, United States, 33755**

| # | | Max Dimensions | sqft | Included |
|----|-----------------|-----------------|-------------|----------|
| 12 | Primary Bedroom | 14'1" x 11'1" | 156 sq. ft | Yes |
| 13 | Sunroom | 13'10" x 28'11" | 409 sq. ft | Yes |
| 14 | Patio | 38'4" x 45'10" | 1488 sq. ft | No |
| 15 | Shower Room | 3'4" x 2'11" | 10 sq. ft | Yes |
| 16 | Kitchen | 14'6" x 12'4" | 179 sq. ft | Yes |
| 17 | Hall | 19'2" x 7'1" | 88 sq. ft | Yes |
| 18 | Swimming Pool | 29'5" x 17'3" | 418 sq. ft | No |
| 19 | W.I.C. | 4'5" x 7'4" | 32 sq. ft | Yes |

Home report

1019 Union Street, Edgewater Drive, Clearwater, Pinellas County,
Florida, United States, 33755

1 Floor 1 - Patio



Max Dimensions: 27'4" x 15'0"
Calculated Area: 375 sq. ft
Included: No

Heated: No
Finished: Yes
Enclosed: No
Contiguous: Yes
Permitted: Yes
Wet space: No
Addition: No
Conversion: No

2 Floor 1 - Bedroom



Max Dimensions: 17'7" x 15'3"
Calculated Area: 182 sq. ft
Included: Yes

Heated: Yes
Finished: Yes
Enclosed: Yes
Contiguous: Yes
Permitted: Yes
Wet space: No
Addition: No
Conversion: No

3 Floor 1 - Living Room



Max Dimensions: 16'8" x 20'5"
Calculated Area: 330 sq. ft
Included: Yes

Heated: Yes
Finished: Yes
Enclosed: Yes
Contiguous: Yes
Permitted: Yes
Wet space: No
Addition: No
Conversion: No

4 Floor 1 - ROOM/STUDIO



Max Dimensions: 9'3" x 7'4"
Calculated Area: 68 sq. ft
Included: Yes

Heated: Yes
Finished: Yes
Enclosed: Yes
Contiguous: Yes
Permitted: Yes
Wet space: No
Addition: No
Conversion: No

5 Floor 1 - Bedroom



Max Dimensions: 12'7" x 12'0"
Calculated Area: 129 sq. ft
Included: Yes

Heated: Yes
Finished: Yes
Enclosed: Yes
Contiguous: Yes
Permitted: Yes
Wet space: No
Addition: No
Conversion: No

1019 Union Street, Edgewater Drive, Clearwater, Pinellas County,
Florida, United States, 33755

6 Floor 1 - Workout Room



Max Dimensions: 10'11" x 14'8"
Calculated Area: 161 sq. ft
Included: Yes

Heated: Yes
Finished: Yes
Enclosed: Yes
Contiguous: Yes
Permitted: Yes
Wet space: No
Addition: No
Conversion: No

7 Floor 1 - Dining Area



Max Dimensions: 11'5" x 20'10"
Calculated Area: 217 sq. ft
Included: Yes

Heated: Yes
Finished: Yes
Enclosed: Yes
Contiguous: Yes
Permitted: Yes
Wet space: No
Addition: No
Conversion: No

8 Floor 1 - Foyer



Max Dimensions: 4'9" x 5'6"
Calculated Area: 26 sq. ft
Included: Yes

Heated: Yes
Finished: Yes
Enclosed: Yes
Contiguous: Yes
Permitted: Yes
Wet space: No
Addition: No
Conversion: No

1019 Union Street, Edgewater Drive, Clearwater, Pinellas County,
Florida, United States, 33755

9 Floor 1 - Bath



Max Dimensions: 8'1" x 8'4"
Calculated Area: 67 sq. ft
Included: Yes

Heated: Yes
Finished: Yes
Enclosed: Yes
Contiguous: Yes
Permitted: Yes
Wet space: Yes
Addition: No
Conversion: No

10 Floor 1 - Bath



Max Dimensions: 14'1" x 5'2"
Calculated Area: 72 sq. ft
Included: Yes

Heated: Yes
Finished: Yes
Enclosed: Yes
Contiguous: Yes
Permitted: Yes
Wet space: Yes
Addition: No
Conversion: No

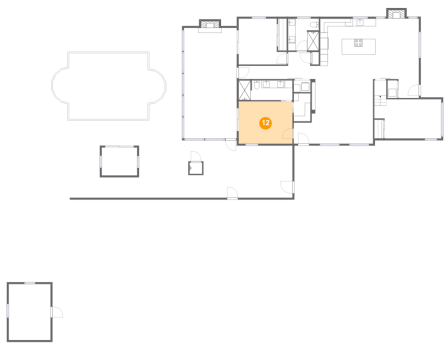
11 Floor 1 - Pickle Ball Court



Max Dimensions: 58'7" x 33'3"
Calculated Area: 1850 sq. ft
Included: No

Heated: No
Finished: No
Enclosed: No
Contiguous: Yes
Permitted: No
Wet space: No
Addition: No
Conversion: No

12 Floor 1 - Primary Bedroom



Max Dimensions: 14'1" x 11'1"
Calculated Area: 156 sq. ft
Included: Yes

Heated: Yes
Finished: Yes
Enclosed: Yes
Contiguous: Yes
Permitted: Yes
Wet space: No
Addition: No
Conversion: No

13 Floor 1 - Sunroom



Max Dimensions: 13'10" x 28'11"
Calculated Area: 409 sq. ft
Included: Yes

Heated: Yes
Finished: Yes
Enclosed: Yes
Contiguous: Yes
Permitted: Yes
Wet space: No
Addition: No
Conversion: No

14 Floor 1 - Patio



Max Dimensions: 38'4" x 45'10"
Calculated Area: 1488 sq. ft
Included: No

Heated: No
Finished: Yes
Enclosed: No
Contiguous: Yes
Permitted: Yes
Wet space: No
Addition: No
Conversion: No

15 Floor 1 - Shower Room



Max Dimensions: 3'4" x 2'11"
Calculated Area: 10 sq. ft
Included: Yes

Heated: Yes
Finished: Yes
Enclosed: Yes
Contiguous: Yes
Permitted: Yes
Wet space: Yes
Addition: No
Conversion: No

16 Floor 1 - Kitchen



Max Dimensions: 14'6" x 12'4"
Calculated Area: 179 sq. ft
Included: Yes

Heated: Yes
Finished: Yes
Enclosed: Yes
Contiguous: Yes
Permitted: Yes
Wet space: No
Addition: No
Conversion: No

17 Floor 1 - Hall



Max Dimensions: 19'2" x 7'1"
Calculated Area: 88 sq. ft
Included: Yes

Heated: Yes
Finished: Yes
Enclosed: Yes
Contiguous: Yes
Permitted: Yes
Wet space: No
Addition: No
Conversion: No

18 Floor 1 - Swimming Pool



Max Dimensions: 29'5" x 17'3"
Calculated Area: 418 sq. ft
Included: No

Heated: No
Finished: No
Enclosed: No
Contiguous: Yes
Permitted: No
Wet space: No
Addition: No
Conversion: No

19 Floor 1 - W.I.C.



Max Dimensions: 4'5" x 7'4"
Calculated Area: 32 sq. ft
Included: Yes

Heated: Yes
Finished: Yes
Enclosed: Yes
Contiguous: Yes
Permitted: Yes
Wet space: No
Addition: No
Conversion: No