

Home report

10169 Homestake Rd,Spearfish,SD,US

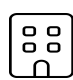



Total Area: 2192 sq. ft

Floor 1: 678 sq. ft, Floor 2: 1514 sq. ft

Excluded: Storage 345 sq. ft, Garage 355 sq. ft, Embedded window 16 sq. ft, Walls: 193 sq. ft

Property summary

 **2** Floors

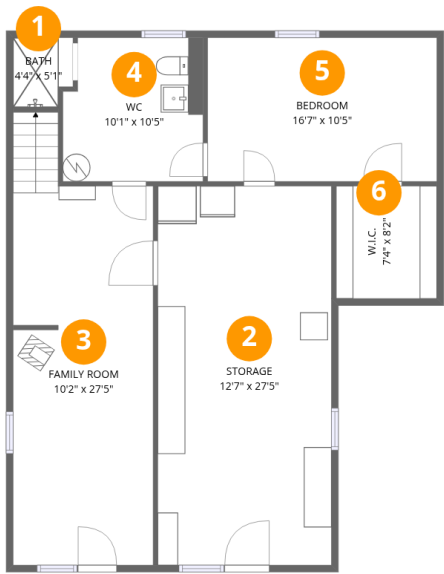
 **3** Bedrooms

 **3** Bathrooms

 **1** Garages

Home report

10169 Homestake Rd,Spearfish,SD,US



Room dimensions

Floor 1 Total:678sqft    Excluded: 345sqft

#		Max Dimensions	sqft	Included
1	Bath	4'4" x 5'1"	20 sq. ft	Yes
2	Storage	12'7" x 27'5"	345 sq. ft	No
3	Family Room	10'2" x 27'5"	294 sq. ft	Yes
4	WC	10'1" x 10'5"	101 sq. ft	Yes
5	Bedroom	16'7" x 10'5"	173 sq. ft	Yes
6	W.I.C.	7'4" x 8'2"	59 sq. ft	Yes

Home report

10169 Homestake Rd,Spearfish,SD,US



Room dimensions

Floor 2 Total:1514sqft Excluded: 371sqft

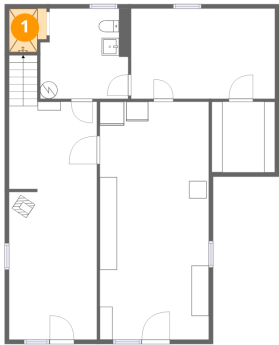
#		Max Dimensions	sqft	Included
7	W.I.C.	8'0" x 7'2"	57 sq. ft	Yes
8	Kitchen	10'6" x 10'11"	115 sq. ft	Yes
9	Garage	22'1" x 17'3"	355 sq. ft	No
10	Hall	12'8" x 8'11"	114 sq. ft	Yes
11	Bedroom	10'6" x 13'7"	142 sq. ft	Yes
12	Sauna	8'1" x 6'0"	48 sq. ft	Yes
13	Bath	8'1" x 9'3"	73 sq. ft	Yes
14	Foyer	7'4" x 8'2"	46 sq. ft	Yes
15	Hall	6'4" x 10'9"	68 sq. ft	Yes
16	Living Room	19'10" x 12'9"	236 sq. ft	Yes
17	Laundry	9'4" x 8'11"	84 sq. ft	Yes

Home report

10169 Homestake Rd,Spearfish,SD,US

#		Max Dimensions	sqft	Included
18	Primary Bedroom	18'8" x 10'9"	184 sq. ft	Yes
19	Dining Area	12'2" x 14'8"	179 sq. ft	Yes
20	Bath	8'4" x 10'9"	69 sq. ft	Yes

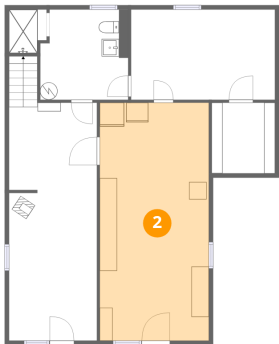
1 Floor 1 - Bath



Max Dimensions: 4'4" x 5'1"  
Calculated Area: 20 sq. ft  
Included: Yes

Heated: Yes  
Finished: Yes  
Enclosed: Yes  
Contiguous: Yes  
Permitted: Yes  
Wet space: Yes  
Addition: No  
Conversion: No

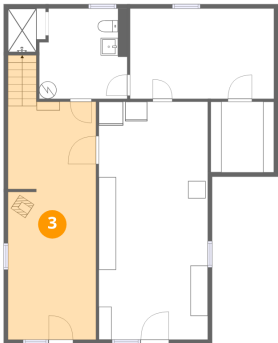
2 Floor 1 - Storage



Max Dimensions: 12'7" x 27'5"  
Calculated Area: 345 sq. ft  
Included: No

Heated: No  
Finished: No  
Enclosed: No  
Contiguous: Yes  
Permitted: Yes  
Wet space: No  
Addition: No  
Conversion: No

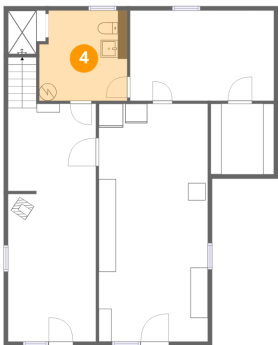
3 Floor 1 - Family Room



Max Dimensions: 10'2" x 27'5"  
Calculated Area: 294 sq. ft  
Included: Yes

Heated: Yes  
Finished: Yes  
Enclosed: Yes  
Contiguous: Yes  
Permitted: Yes  
Wet space: No  
Addition: No  
Conversion: No

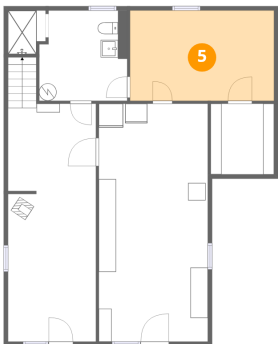
4 Floor 1 - WC



Max Dimensions: 10'1" x 10'5"  
Calculated Area: 101 sq. ft  
Included: Yes

Heated: Yes  
Finished: Yes  
Enclosed: Yes  
Contiguous: Yes  
Permitted: Yes  
Wet space: Yes  
Addition: No  
Conversion: No

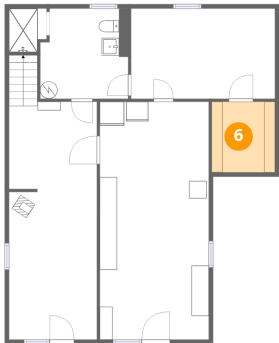
5 Floor 1 - Bedroom



Max Dimensions: 16'7" x 10'5"  
Calculated Area: 173 sq. ft  
Included: Yes

Heated: Yes  
Finished: Yes  
Enclosed: Yes  
Contiguous: Yes  
Permitted: Yes  
Wet space: No  
Addition: No  
Conversion: No

6 Floor 1 - W.I.C.



Max Dimensions: 7'4" x 8'2"  
Calculated Area: 59 sq. ft  
Included: Yes

Heated: Yes  
Finished: Yes  
Enclosed: Yes  
Contiguous: Yes  
Permitted: Yes  
Wet space: No  
Addition: No  
Conversion: No

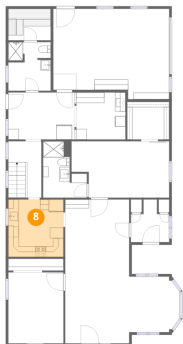
7 Floor 2 - W.I.C.



Max Dimensions: 8'0" x 7'2"  
Calculated Area: 57 sq. ft  
Included: Yes

Heated: Yes  
Finished: Yes  
Enclosed: Yes  
Contiguous: Yes  
Permitted: Yes  
Wet space: No  
Addition: No  
Conversion: No

8 Floor 2 - Kitchen



Max Dimensions: 10'6" x 10'11"  
Calculated Area: 115 sq. ft  
Included: Yes

Heated: Yes  
Finished: Yes  
Enclosed: Yes  
Contiguous: Yes  
Permitted: Yes  
Wet space: No  
Addition: No  
Conversion: No

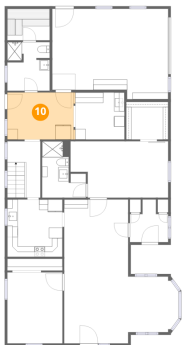
9 Floor 2 - Garage



Max Dimensions: 22'1" x 17'3"  
Calculated Area: 355 sq. ft  
Included: No

Heated: No  
Finished: No  
Enclosed: Yes  
Contiguous: Yes  
Permitted: Yes  
Wet space: No  
Addition: No  
Conversion: No

10 Floor 2 - Hall



Max Dimensions: 12'8" x 8'11"  
Calculated Area: 114 sq. ft  
Included: Yes

Heated: Yes  
Finished: Yes  
Enclosed: Yes  
Contiguous: Yes  
Permitted: Yes  
Wet space: No  
Addition: No  
Conversion: No

11 Floor 2 - Bedroom



Max Dimensions: 10'6" x 13'7"  
Calculated Area: 142 sq. ft  
Included: Yes

Heated: Yes  
Finished: Yes  
Enclosed: Yes  
Contiguous: Yes  
Permitted: Yes  
Wet space: No  
Addition: No  
Conversion: No



12 Floor 2 - Sauna



Max Dimensions: 8'1" x 6'0"  
Calculated Area: 48 sq. ft  
Included: Yes

Heated: Yes  
Finished: Yes  
Enclosed: Yes  
Contiguous: Yes  
Permitted: Yes  
Wet space: No  
Addition: No  
Conversion: No

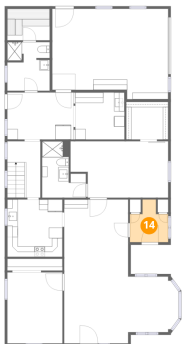
13 Floor 2 - Bath



Max Dimensions: 8'1" x 9'3"  
Calculated Area: 73 sq. ft  
Included: Yes

Heated: Yes  
Finished: Yes  
Enclosed: Yes  
Contiguous: Yes  
Permitted: Yes  
Wet space: Yes  
Addition: No  
Conversion: No

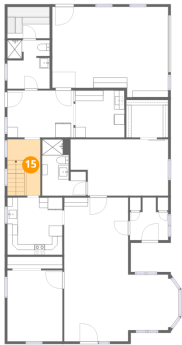
14 Floor 2 - Foyer



Max Dimensions: 7'4" x 8'2"  
Calculated Area: 46 sq. ft  
Included: Yes

Heated: Yes  
Finished: Yes  
Enclosed: Yes  
Contiguous: Yes  
Permitted: Yes  
Wet space: No  
Addition: No  
Conversion: No

15 Floor 2 - Hall



Max Dimensions: 6'4" x 10'9"  
Calculated Area: 68 sq. ft  
Included: Yes

Heated: Yes  
Finished: Yes  
Enclosed: Yes  
Contiguous: Yes  
Permitted: Yes  
Wet space: No  
Addition: No  
Conversion: No

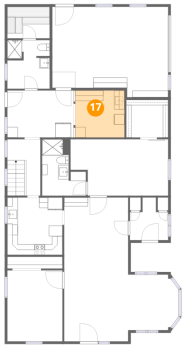
16 Floor 2 - Living Room



Max Dimensions: 19'10" x 12'9"  
Calculated Area: 236 sq. ft  
Included: Yes

Heated: Yes  
Finished: Yes  
Enclosed: Yes  
Contiguous: Yes  
Permitted: Yes  
Wet space: No  
Addition: No  
Conversion: No

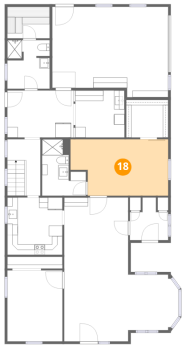
17 Floor 2 - Laundry



Max Dimensions: 9'4" x 8'11"  
Calculated Area: 84 sq. ft  
Included: Yes

Heated: Yes  
Finished: Yes  
Enclosed: Yes  
Contiguous: Yes  
Permitted: Yes  
Wet space: No  
Addition: No  
Conversion: No

18 Floor 2 - Primary Bedroom



Max Dimensions: 18'8" x 10'9"  
Calculated Area: 184 sq. ft  
Included: Yes

Heated: Yes  
Finished: Yes  
Enclosed: Yes  
Contiguous: Yes  
Permitted: Yes  
Wet space: No  
Addition: No  
Conversion: No

19 Floor 2 - Dining Area



Max Dimensions: 12'2" x 14'8"  
Calculated Area: 179 sq. ft  
Included: Yes

Heated: Yes  
Finished: Yes  
Enclosed: Yes  
Contiguous: Yes  
Permitted: Yes  
Wet space: No  
Addition: No  
Conversion: No

20 Floor 2 - Bath



Max Dimensions: 8'4" x 10'9"  
Calculated Area: 69 sq. ft  
Included: Yes

Heated: Yes  
Finished: Yes  
Enclosed: Yes  
Contiguous: Yes  
Permitted: Yes  
Wet space: Yes  
Addition: No  
Conversion: No