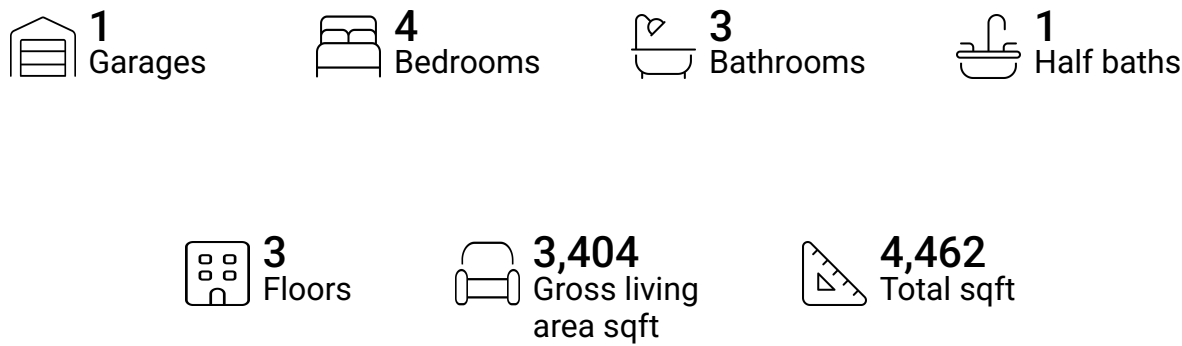


5917 Monet Drive, Roanoke, Roanoke County,  
Virginia, United States, 24018



Property summary



5917 Monet Drive, Roanoke, Roanoke County,  
Virginia, United States, 24018

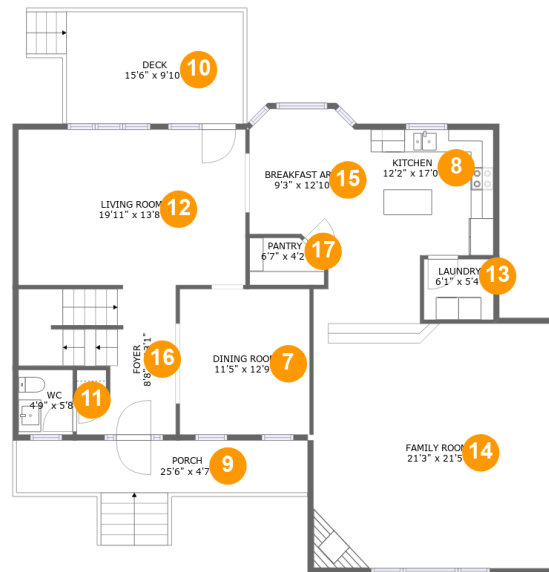


Room dimensions

Floor 1 Total sqft: 1503    Living area: 714

#		Dimensions	sqft	Counted as living area
1	Electrical Room	8'2" x 7'3"	52 sq. ft	No
2	Recreation Room	31'4" x 13'8"	444 sq. ft	Yes
3	Storage	10'0" x 13'7"	136 sq. ft	No
4	Bath	10'0" x 5'9"	57 sq. ft	Yes
5	Garage	22'1" x 21'5"	482 sq. ft	No
6	Hall	9'9" x 13'1"	119 sq. ft	Yes

# 5917 Monet Drive, Roanoke, Roanoke County, Virginia, United States, 24018



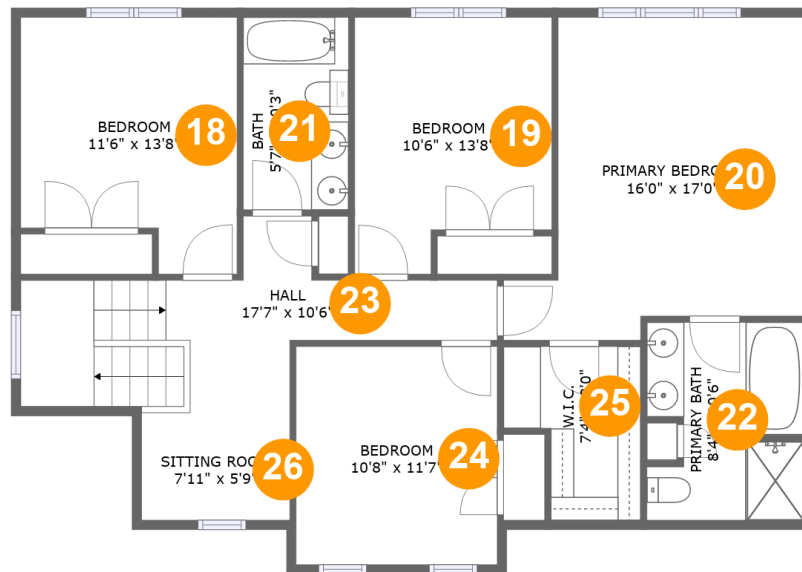
## Room dimensions

Floor 2

Total sqft: 1786    Living area: 1517

#		Dimensions	sqft	Counted as living area
7	Dining Room	11'5" x 12'9"	146 sq. ft	Yes
8	Kitchen	12'2" x 17'0"	187 sq. ft	Yes
9	Porch	25'6" x 4'7"	117 sq. ft	No
10	Deck	15'6" x 9'10"	152 sq. ft	No
11	WC	4'9" x 5'8"	27 sq. ft	Yes
12	Living Room	19'11" x 13'8"	272 sq. ft	Yes
13	Laundry	6'1" x 5'4"	32 sq. ft	Yes
14	Family Room	21'3" x 21'5"	456 sq. ft	Yes
15	Breakfast Area	9'3" x 12'10"	105 sq. ft	Yes
16	Foyer	8'8" x 13'1"	139 sq. ft	Yes
17	Pantry	6'7" x 4'2"	25 sq. ft	Yes

# 5917 Monet Drive, Roanoke, Roanoke County, Virginia, United States, 24018



## Room dimensions

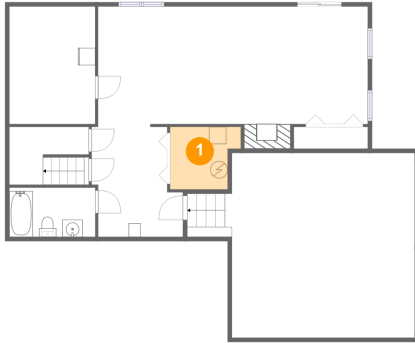
### Floor 3

Total sqft: 1173 Living area: 1173

#		Dimensions	sqft	Counted as living area
18	Bedroom	11'6" x 13'8"	139 sq. ft	Yes
19	Bedroom	10'6" x 13'8"	128 sq. ft	Yes
20	Primary Bedroom	16'0" x 17'0"	222 sq. ft	Yes
21	Bath	5'7" x 10'3"	57 sq. ft	Yes
22	Primary Bath	8'4" x 10'6"	81 sq. ft	Yes
23	Hall	17'7" x 10'6"	146 sq. ft	Yes
24	Bedroom	10'8" x 11'7"	124 sq. ft	Yes
25	W.I.C.	7'4" x 8'0"	55 sq. ft	Yes
26	Sitting Room	7'11" x 5'9"	45 sq. ft	Yes

**5917 Monet Drive, Roanoke, Roanoke County,  
Virginia, United States, 24018**

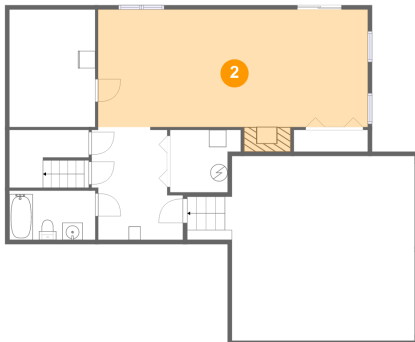
## **1 Floor 1 - Electrical Room**



**Dimensions:** 8'2" x 7'3"  
**Area:** 52 sq. ft  
**Counted as living area:** No

**Heated:** No  
**Finished:** No  
**Enclosed:** Yes  
**Contiguous:** Yes  
**Permitted:** Yes  
**Wet space:** No  
**Addition:** No  
**Conversion:** No

## **2 Floor 1 - Recreation Room**

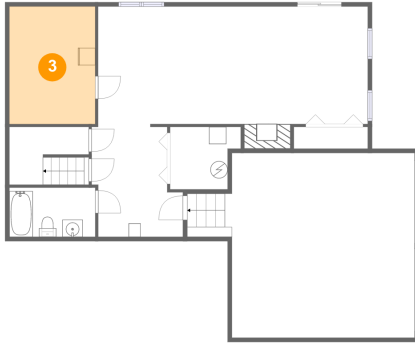


**Dimensions:** 31'4" x 13'8"  
**Area:** 444 sq. ft  
**Counted as living area:** Yes

**Heated:** Yes  
**Finished:** Yes  
**Enclosed:** Yes  
**Contiguous:** Yes  
**Permitted:** Yes  
**Wet space:** No  
**Addition:** No  
**Conversion:** No

**5917 Monet Drive, Roanoke, Roanoke County,  
Virginia, United States, 24018**

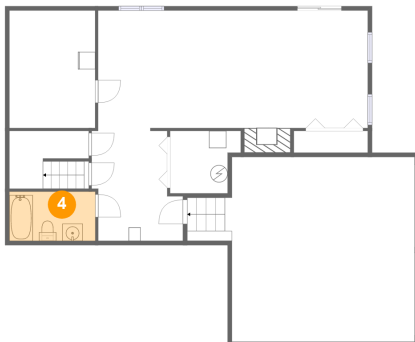
### **3 Floor 1 - Storage**



**Dimensions:** 10'0" x 13'7"  
**Area:** 136 sq. ft  
**Counted as living area:** No

**Heated:** No  
**Finished:** No  
**Enclosed:** No  
**Contiguous:** Yes  
**Permitted:** Yes  
**Wet space:** No  
**Addition:** No  
**Conversion:** No

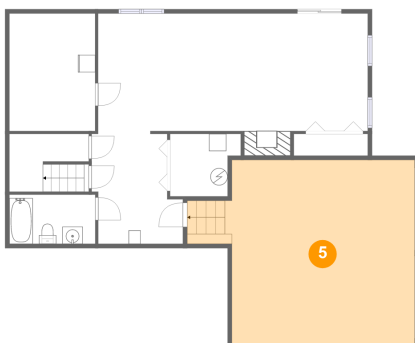
### **4 Floor 1 - Bath**



**Dimensions:** 10'0" x 5'9"  
**Area:** 57 sq. ft  
**Counted as living area:** Yes

**Heated:** Yes  
**Finished:** Yes  
**Enclosed:** Yes  
**Contiguous:** Yes  
**Permitted:** Yes  
**Wet space:** Yes  
**Addition:** No  
**Conversion:** No

### **5 Floor 1 - Garage**

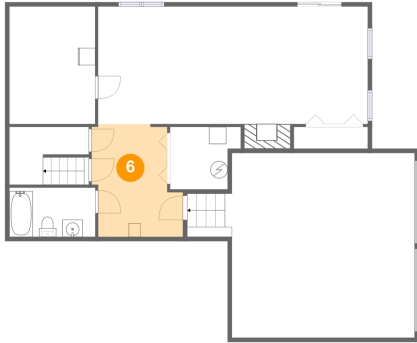


**Dimensions:** 22'1" x 21'5"  
**Area:** 482 sq. ft  
**Counted as living area:** No

**Heated:** No  
**Finished:** No  
**Enclosed:** Yes  
**Contiguous:** Yes  
**Permitted:** Yes  
**Wet space:** No  
**Addition:** No  
**Conversion:** No

5917 Monet Drive, Roanoke, Roanoke County,  
Virginia, United States, 24018

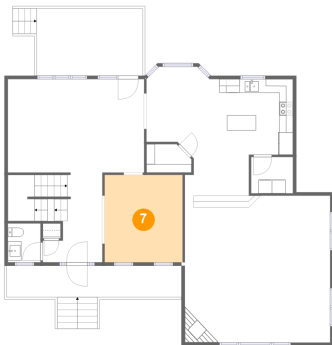
## 6 Floor 1 - Hall



Dimensions: 9'9" x 13'1"  
Area: 119 sq. ft  
Counted as living area: Yes

Heated: Yes  
Finished: Yes  
Enclosed: Yes  
Contiguous: Yes  
Permitted: Yes  
Wet space: No  
Addition: No  
Conversion: No

## 7 Floor 2 - Dining Room



Dimensions: 11'5" x 12'9"  
Area: 146 sq. ft  
Counted as living area: Yes

Heated: Yes  
Finished: Yes  
Enclosed: Yes  
Contiguous: Yes  
Permitted: Yes  
Wet space: No  
Addition: No  
Conversion: No

## 8 Floor 2 - Kitchen

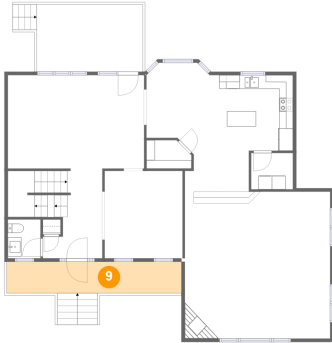


Dimensions: 12'2" x 17'0"  
Area: 187 sq. ft  
Counted as living area: Yes

Heated: Yes  
Finished: Yes  
Enclosed: Yes  
Contiguous: Yes  
Permitted: Yes  
Wet space: No  
Addition: No  
Conversion: No

5917 Monet Drive, Roanoke, Roanoke County,  
Virginia, United States, 24018

## 9 Floor 2 - Porch



Dimensions: 25'6" x 4'7"  
Area: 117 sq. ft  
Counted as living area: No

Heated: No  
Finished: Yes  
Enclosed: No  
Contiguous: Yes  
Permitted: Yes  
Wet space: No  
Addition: No  
Conversion: No

## 10 Floor 2 - Deck



Dimensions: 15'6" x 9'10"  
Area: 152 sq. ft  
Counted as living area: No

Heated: No  
Finished: Yes  
Enclosed: No  
Contiguous: Yes  
Permitted: Yes  
Wet space: No  
Addition: No  
Conversion: No

## 11 Floor 2 - WC



Dimensions: 4'9" x 5'8"  
Area: 27 sq. ft  
Counted as living area: Yes

Heated: Yes  
Finished: Yes  
Enclosed: Yes  
Contiguous: Yes  
Permitted: Yes  
Wet space: Yes  
Addition: No  
Conversion: No



5917 Monet Drive, Roanoke, Roanoke County,  
Virginia, United States, 24018

## 12 Floor 2 - Living Room



Dimensions: 19'11" x 13'8"  
Area: 272 sq. ft  
Counted as living area: Yes

Heated: Yes  
Finished: Yes  
Enclosed: Yes  
Contiguous: Yes  
Permitted: Yes  
Wet space: No  
Addition: No  
Conversion: No

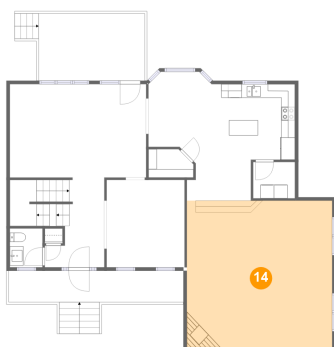
## 13 Floor 2 - Laundry



Dimensions: 6'1" x 5'4"  
Area: 32 sq. ft  
Counted as living area: Yes

Heated: Yes  
Finished: Yes  
Enclosed: Yes  
Contiguous: Yes  
Permitted: Yes  
Wet space: No  
Addition: No  
Conversion: No

## 14 Floor 2 - Family Room



Dimensions: 21'3" x 21'5"  
Area: 456 sq. ft  
Counted as living area: Yes

Heated: Yes  
Finished: Yes  
Enclosed: Yes  
Contiguous: Yes  
Permitted: Yes  
Wet space: No  
Addition: No  
Conversion: No

**5917 Monet Drive, Roanoke, Roanoke County,  
Virginia, United States, 24018**

## **15** Floor 2 - Breakfast Area



Dimensions: 9'3" x 12'10"  
Area: 105 sq. ft  
Counted as living area: Yes

Heated: Yes  
Finished: Yes  
Enclosed: Yes  
Contiguous: Yes  
Permitted: Yes  
Wet space: No  
Addition: No  
Conversion: No

## **16** Floor 2 - Foyer



Dimensions: 8'8" x 13'1"  
Area: 139 sq. ft  
Counted as living area: Yes

Heated: Yes  
Finished: Yes  
Enclosed: Yes  
Contiguous: Yes  
Permitted: Yes  
Wet space: No  
Addition: No  
Conversion: No

## **17** Floor 2 - Pantry



Dimensions: 6'7" x 4'2"  
Area: 25 sq. ft  
Counted as living area: Yes

Heated: Yes  
Finished: Yes  
Enclosed: Yes  
Contiguous: Yes  
Permitted: Yes  
Wet space: No  
Addition: No  
Conversion: No

5917 Monet Drive, Roanoke, Roanoke County,  
Virginia, United States, 24018

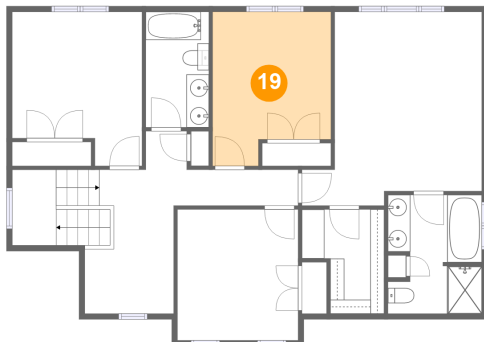
### 18 Floor 3 - Bedroom



Dimensions: 11'6" x 13'8"  
Area: 139 sq. ft  
Counted as living area: Yes

Heated: Yes  
Finished: Yes  
Enclosed: Yes  
Contiguous: Yes  
Permitted: Yes  
Wet space: No  
Addition: No  
Conversion: No

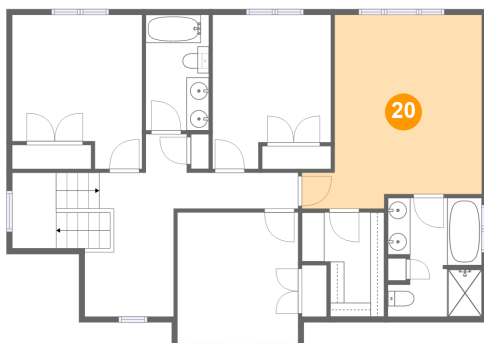
### 19 Floor 3 - Bedroom



Dimensions: 10'6" x 13'8"  
Area: 128 sq. ft  
Counted as living area: Yes

Heated: Yes  
Finished: Yes  
Enclosed: Yes  
Contiguous: Yes  
Permitted: Yes  
Wet space: No  
Addition: No  
Conversion: No

### 20 Floor 3 - Primary Bedroom



Dimensions: 16'0" x 17'0"  
Area: 222 sq. ft  
Counted as living area: Yes

Heated: Yes  
Finished: Yes  
Enclosed: Yes  
Contiguous: Yes  
Permitted: Yes  
Wet space: No  
Addition: No  
Conversion: No

5917 Monet Drive, Roanoke, Roanoke County,  
Virginia, United States, 24018

### 21 Floor 3 - Bath



Dimensions: 5'7" x 10'3"  
Area: 57 sq. ft  
Counted as living area: Yes

Heated: Yes  
Finished: Yes  
Enclosed: Yes  
Contiguous: Yes  
Permitted: Yes  
Wet space: Yes  
Addition: No  
Conversion: No

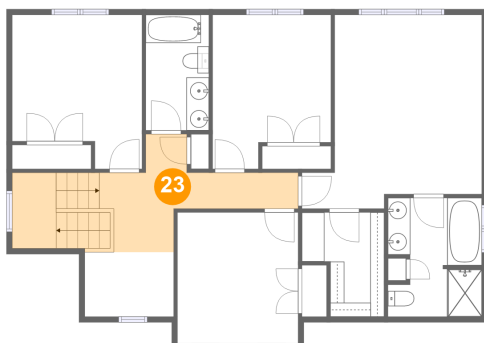
### 22 Floor 3 - Primary Bath



Dimensions: 8'4" x 10'6"  
Area: 81 sq. ft  
Counted as living area: Yes

Heated: Yes  
Finished: Yes  
Enclosed: Yes  
Contiguous: Yes  
Permitted: Yes  
Wet space: Yes  
Addition: No  
Conversion: No

### 23 Floor 3 - Hall



Dimensions: 17'7" x 10'6"  
Area: 146 sq. ft  
Counted as living area: Yes

Heated: Yes  
Finished: Yes  
Enclosed: Yes  
Contiguous: Yes  
Permitted: Yes  
Wet space: No  
Addition: No  
Conversion: No

5917 Monet Drive, Roanoke, Roanoke County,  
Virginia, United States, 24018

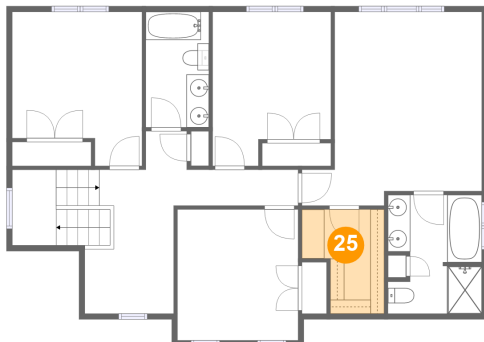
### 24 Floor 3 - Bedroom



Dimensions: 10'8" x 11'7"  
Area: 124 sq. ft  
Counted as living area: Yes

Heated: Yes  
Finished: Yes  
Enclosed: Yes  
Contiguous: Yes  
Permitted: Yes  
Wet space: No  
Addition: No  
Conversion: No

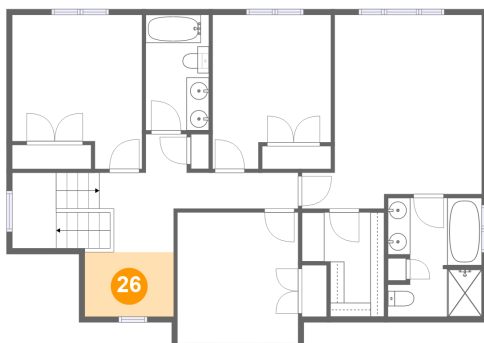
### 25 Floor 3 - W.I.C.



Dimensions: 7'4" x 8'0"  
Area: 55 sq. ft  
Counted as living area: Yes

Heated: Yes  
Finished: Yes  
Enclosed: Yes  
Contiguous: Yes  
Permitted: Yes  
Wet space: No  
Addition: No  
Conversion: No

### 26 Floor 3 - Sitting Room



Dimensions: 7'11" x 5'9"  
Area: 45 sq. ft  
Counted as living area: Yes

Heated: Yes  
Finished: Yes  
Enclosed: Yes  
Contiguous: Yes  
Permitted: Yes  
Wet space: No  
Addition: No  
Conversion: No