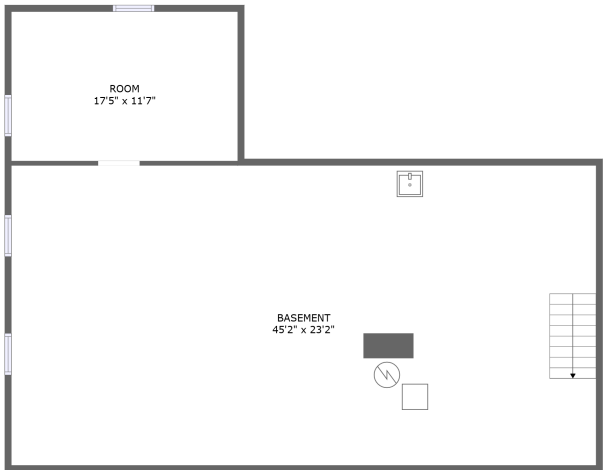
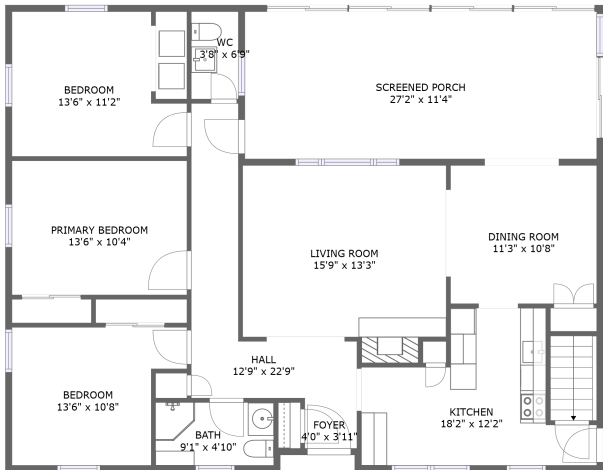


Home report

5930 East Henrietta Road, Rush, Monroe County, New York,  
United States, 14543



FLOOR 1



FLOOR 2


**Total Area: 1246 sq. ft**

Below Ground: 0 sq. ft, Floor 2: 1246 sq. ft

Excluded: Basement 1051 sq. ft, Room 202 sq. ft, Screened porch 309 sq. ft, Walls: 183 sq. ft

Property summary

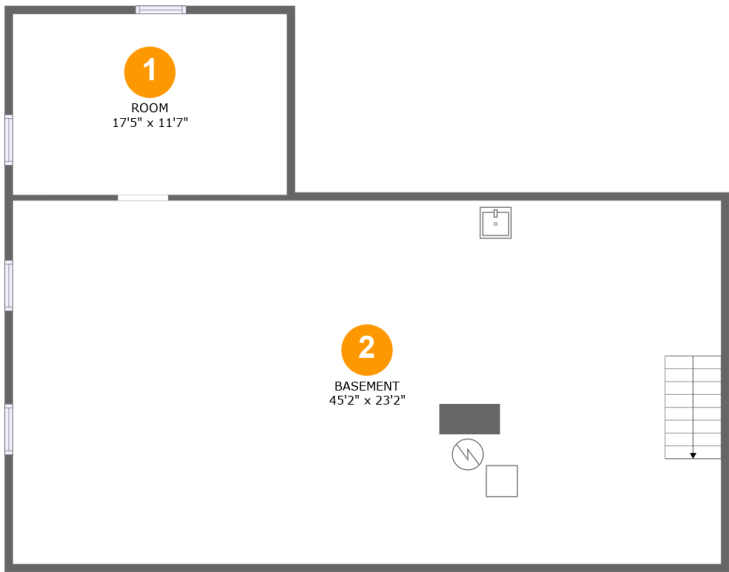
 **2** Floors

 **3** Bedrooms

 **1** Bathrooms

 **1** Half baths

5930 East Henrietta Road, Rush, Monroe County, New York,  
United States, 14543



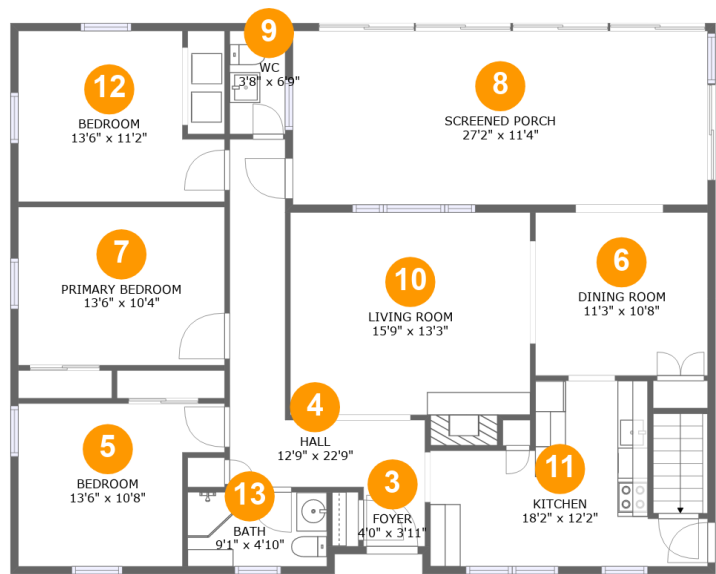
Room dimensions

Floor 1 Below ground Total:0sqft Excluded: 1253sqft

#		Max Dimensions	sqft	Included
1	Room	17'5" x 11'7"	202 sq. ft	No
2	Basement	45'2" x 23'2"	1046 sq. ft	No

Home report

5930 East Henrietta Road, Rush, Monroe County, New York,  
United States, 14543



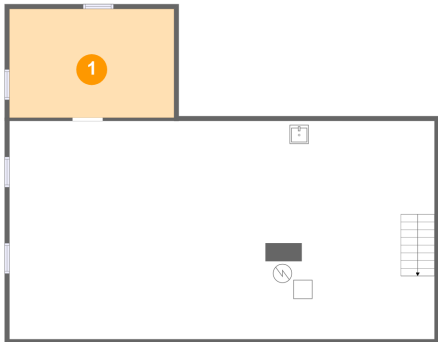
Room dimensions

Floor 2 Total:1246sqft    Excluded: 309sqft

#		Max Dimensions	sqft	Included
3	Foyer	4'0" x 3'11"	16 sq. ft	Yes
4	Hall	12'9" x 22'9"	122 sq. ft	Yes
5	Bedroom	13'6" x 10'8"	124 sq. ft	Yes
6	Dining Room	11'3" x 10'8"	120 sq. ft	Yes
7	Primary Bedroom	13'6" x 10'4"	140 sq. ft	Yes
8	Screened Porch	27'2" x 11'4"	309 sq. ft	No
9	WC	3'8" x 6'9"	25 sq. ft	Yes
10	Living Room	15'9" x 13'3"	217 sq. ft	Yes
11	Kitchen	18'2" x 12'2"	154 sq. ft	Yes
12	Bedroom	13'6" x 11'2"	132 sq. ft	Yes
13	Bath	9'1" x 4'10"	44 sq. ft	Yes

5930 East Henrietta Road, Rush, Monroe County, New York,  
United States, 14543

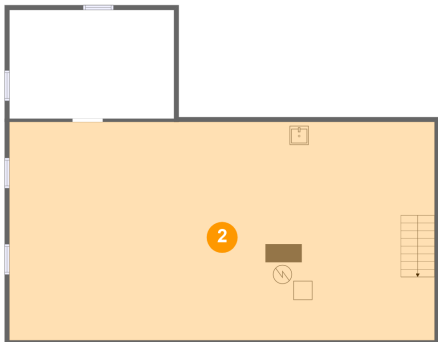
1 Floor 1 - Room



Max Dimensions: 17'5" x 11'7"  
Calculated Area: 202 sq. ft  
Included: No

Heated: Yes  
Finished: No  
Enclosed: Yes  
Contiguous: Yes  
Permitted: Yes  
Wet space: No  
Addition: No  
Conversion: No

2 Floor 1 - Basement



Max Dimensions: 45'2" x 23'2"  
Calculated Area: 1046 sq. ft  
Included: No

Heated: Yes  
Finished: No  
Enclosed: Yes  
Contiguous: Yes  
Permitted: Yes  
Wet space: No  
Addition: No  
Conversion: No

5930 East Henrietta Road, Rush, Monroe County, New York,  
United States, 14543

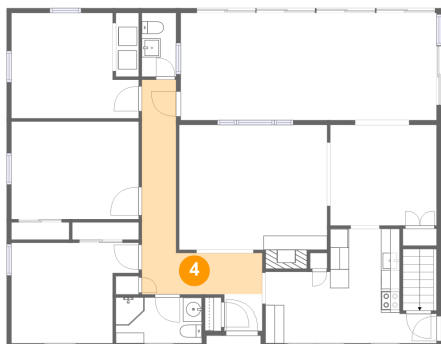
3 Floor 2 - Foyer



Max Dimensions: 4'0" x 3'11"  
Calculated Area: 16 sq. ft  
Included: Yes

Heated: Yes  
Finished: Yes  
Enclosed: Yes  
Contiguous: Yes  
Permitted: Yes  
Wet space: No  
Addition: No  
Conversion: No

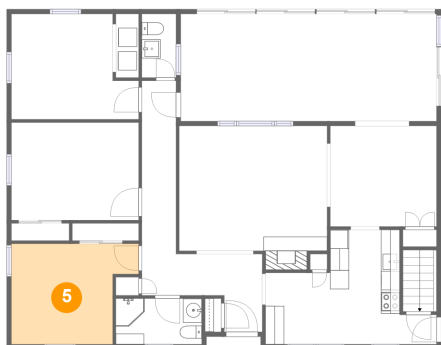
4 Floor 2 - Hall



Max Dimensions: 12'9" x 22'9"  
Calculated Area: 122 sq. ft  
Included: Yes

Heated: Yes  
Finished: Yes  
Enclosed: Yes  
Contiguous: Yes  
Permitted: Yes  
Wet space: No  
Addition: No  
Conversion: No

5 Floor 2 - Bedroom



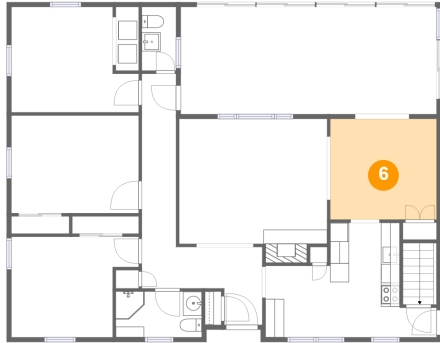
Max Dimensions: 13'6" x 10'8"  
Calculated Area: 124 sq. ft  
Included: Yes

Heated: Yes  
Finished: Yes  
Enclosed: Yes  
Contiguous: Yes  
Permitted: Yes  
Wet space: No  
Addition: No  
Conversion: No

## Home report

5930 East Henrietta Road, Rush, Monroe County, New York,  
United States, 14543

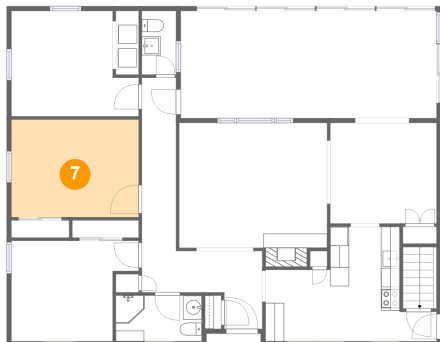
### 6 Floor 2 - Dining Room



Max Dimensions: 11'3" x 10'8"  
Calculated Area: 120 sq. ft  
Included: Yes

Heated: Yes  
Finished: Yes  
Enclosed: Yes  
Contiguous: Yes  
Permitted: Yes  
Wet space: No  
Addition: No  
Conversion: No

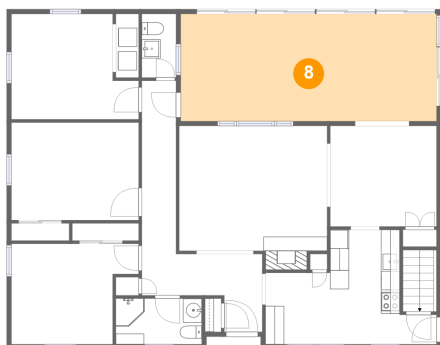
### 7 Floor 2 - Primary Bedroom



Max Dimensions: 13'6" x 10'4"  
Calculated Area: 140 sq. ft  
Included: Yes

Heated: Yes  
Finished: Yes  
Enclosed: Yes  
Contiguous: Yes  
Permitted: Yes  
Wet space: No  
Addition: No  
Conversion: No

### 8 Floor 2 - Screened Porch

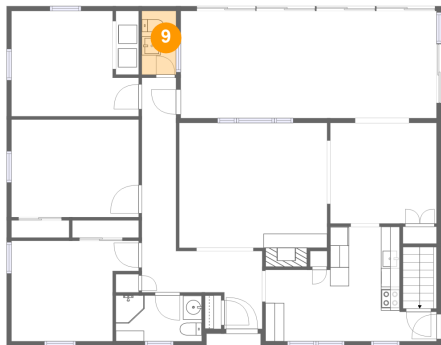


Max Dimensions: 27'2" x 11'4"  
Calculated Area: 309 sq. ft  
Included: No

Heated: No  
Finished: Yes  
Enclosed: No  
Contiguous: Yes  
Permitted: Yes  
Wet space: No  
Addition: No  
Conversion: No

5930 East Henrietta Road, Rush, Monroe County, New York,  
United States, 14543

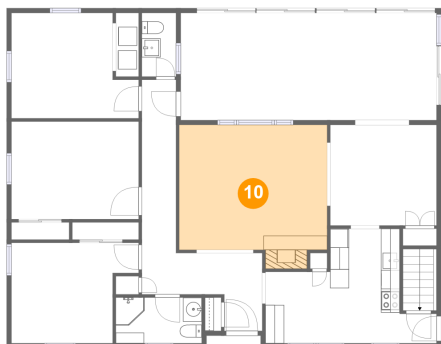
9 Floor 2 - WC



Max Dimensions: 3'8" x 6'9"  
Calculated Area: 25 sq. ft  
Included: Yes

Heated: Yes  
Finished: Yes  
Enclosed: Yes  
Contiguous: Yes  
Permitted: Yes  
Wet space: Yes  
Addition: No  
Conversion: No

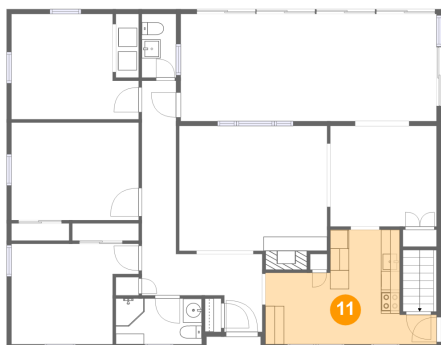
10 Floor 2 - Living Room



Max Dimensions: 15'9" x 13'3"  
Calculated Area: 217 sq. ft  
Included: Yes

Heated: Yes  
Finished: Yes  
Enclosed: Yes  
Contiguous: Yes  
Permitted: Yes  
Wet space: No  
Addition: No  
Conversion: No

11 Floor 2 - Kitchen

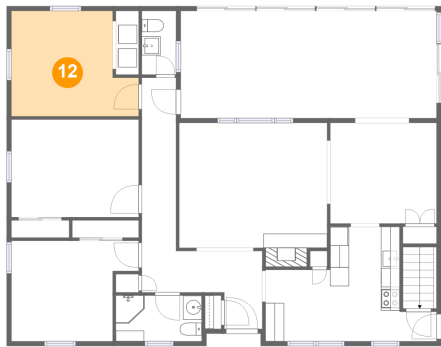


Max Dimensions: 18'2" x 12'2"  
Calculated Area: 154 sq. ft  
Included: Yes

Heated: Yes  
Finished: Yes  
Enclosed: Yes  
Contiguous: Yes  
Permitted: Yes  
Wet space: No  
Addition: No  
Conversion: No

5930 East Henrietta Road, Rush, Monroe County, New York,  
United States, 14543

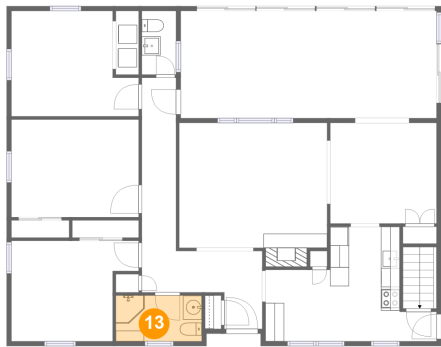
12 Floor 2 - Bedroom



Max Dimensions: 13'6" x 11'2"  
Calculated Area: 132 sq. ft  
Included: Yes

Heated: Yes  
Finished: Yes  
Enclosed: Yes  
Contiguous: Yes  
Permitted: Yes  
Wet space: No  
Addition: No  
Conversion: No

13 Floor 2 - Bath



Max Dimensions: 9'1" x 4'10"  
Calculated Area: 44 sq. ft  
Included: Yes

Heated: Yes  
Finished: Yes  
Enclosed: Yes  
Contiguous: Yes  
Permitted: Yes  
Wet space: Yes  
Addition: No  
Conversion: No