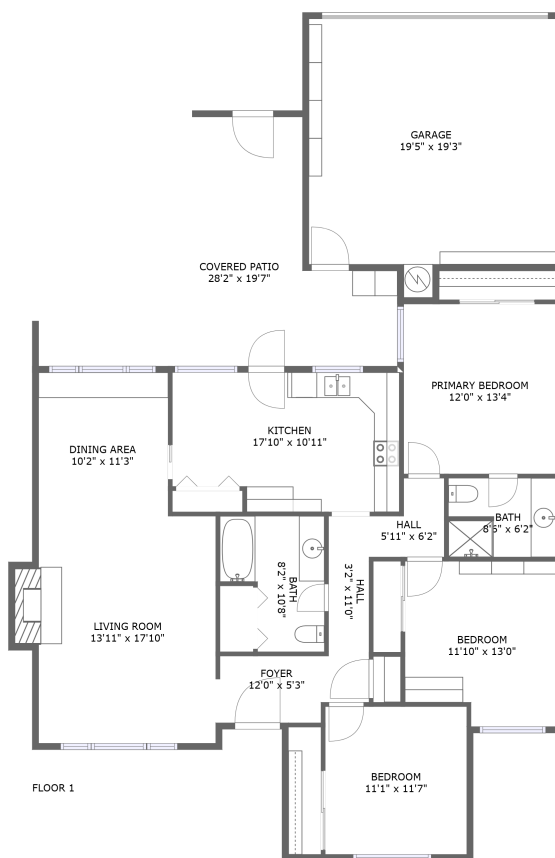



# 1939 West Santa Ana Avenue, Fresno, Fresno County, California, United States, 93705, 1939 W Santa Ana



## Property summary


 **1** Garages

 **3** Bedrooms

 **2** Bathrooms

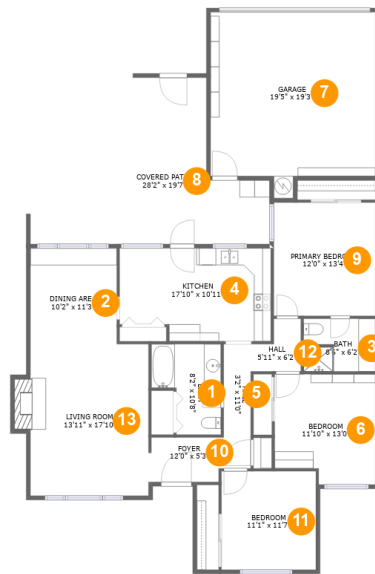
 **0** Half baths

 **1** Floors

 **1,432** Gross living area sqft

 **2,225** Total sqft

# 1939 West Santa Ana Avenue, Fresno, Fresno County, California, United States, 93705, 1939 W Santa Ana



## Room dimensions

Floor 1

Total sqft: 2225 Living area: 1432

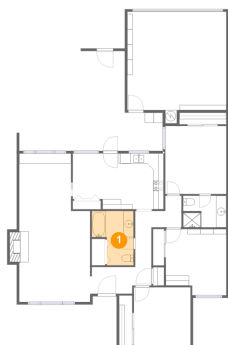
#		Dimensions	sqft	Counted as living area
1	Bath	8'2" x 10'8"	71 sq. ft	Yes
2	Dining Room	10'2" x 11'3"	115 sq. ft	Yes
3	Bath	8'6" x 6'2"	51 sq. ft	Yes
4	Kitchen	17'10" x 10'11"	184 sq. ft	Yes
5	Hall	3'2" x 11'0"	35 sq. ft	No
6	Bedroom	11'10" x 13'0"	144 sq. ft	Yes
7	Garage	19'5" x 19'3"	381 sq. ft	No
8	Outdoor	28'2" x 19'7"	330 sq. ft	No
9	Bedroom	12'0" x 13'4"	160 sq. ft	Yes
10	Entry	12'0" x 5'3"	57 sq. ft	Yes
11	Bedroom	11'1" x 11'7"	129 sq. ft	Yes

**1939 West Santa Ana Avenue, Fresno, Fresno County,  
California, United States, 93705, 1939 W Santa Ana**

#		Dimensions	sqft	Counted as living area
12	Hall	5'11" x 6'2"	28 sq. ft	Yes
13	Living Room	13'11" x 17'10"	259 sq. ft	Yes

# 1939 West Santa Ana Avenue, Fresno, Fresno County, California, United States, 93705, 1939 W Santa Ana

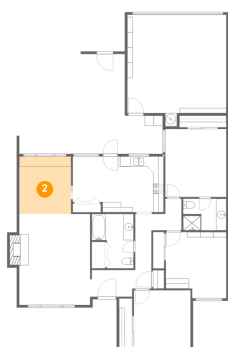
## 1 Floor 1 - Bath



**Dimensions:** 8'2" x 10'8"  
**Area:** 71 sq. ft  
**Counted as living area:** Yes

**Heated:** Yes  
**Finished:** Yes  
**Enclosed:** Yes  
**Contiguous:** Yes  
**Permitted:** Yes  
**Wet space:** Yes  
**Addition:** No  
**Conversion:** No

## 2 Floor 1 - Dining Room

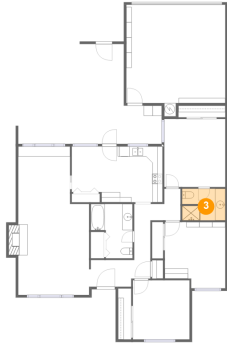


**Dimensions:** 10'2" x 11'3"  
**Area:** 115 sq. ft  
**Counted as living area:** Yes

**Heated:** Yes  
**Finished:** Yes  
**Enclosed:** Yes  
**Contiguous:** Yes  
**Permitted:** Yes  
**Wet space:** No  
**Addition:** No  
**Conversion:** No

# 1939 West Santa Ana Avenue, Fresno, Fresno County, California, United States, 93705, 1939 W Santa Ana

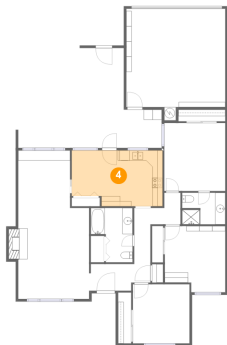
## 3 Floor 1 - Bath



Dimensions: 8'6" x 6'2"  
Area: 51 sq. ft  
Counted as living area: Yes

Heated: Yes  
Finished: Yes  
Enclosed: Yes  
Contiguous: Yes  
Permitted: Yes  
Wet space: Yes  
Addition: No  
Conversion: No

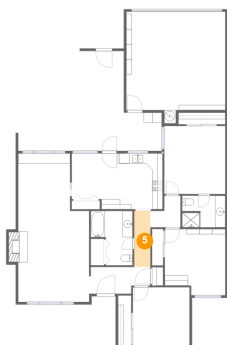
## 4 Floor 1 - Kitchen



Dimensions: 17'10" x 10'11"  
Area: 184 sq. ft  
Counted as living area: Yes

Heated: Yes  
Finished: Yes  
Enclosed: Yes  
Contiguous: Yes  
Permitted: Yes  
Wet space: No  
Addition: No  
Conversion: No

## 5 Floor 1 - Hall

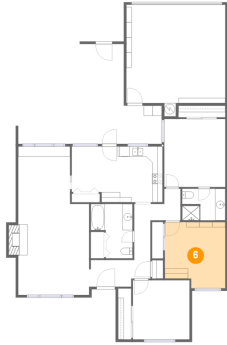


Dimensions: 3'2" x 11'0"  
Area: 35 sq. ft  
Counted as living area: No

Heated: Yes  
Finished: Yes  
Enclosed: Yes  
Contiguous: Yes  
Permitted: Yes  
Wet space: No  
Addition: No  
Conversion: No

1939 West Santa Ana Avenue, Fresno, Fresno County,  
California, United States, 93705, 1939 W Santa Ana

## 6 Floor 1 - Bedroom



Dimensions: 11'10" x 13'0"  
Area: 144 sq. ft  
Counted as living area: Yes

Heated: Yes  
Finished: Yes  
Enclosed: Yes  
Contiguous: Yes  
Permitted: Yes  
Wet space: No  
Addition: No  
Conversion: No

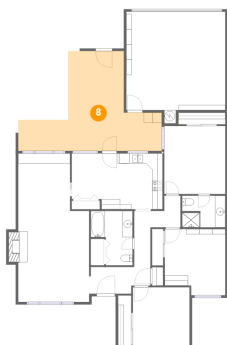
## 7 Floor 1 - Garage



Dimensions: 19'5" x 19'3"  
Area: 381 sq. ft  
Counted as living area: No

Heated: No  
Finished: No  
Enclosed: Yes  
Contiguous: Yes  
Permitted: Yes  
Wet space: No  
Addition: No  
Conversion: No

## 8 Floor 1 - Outdoor

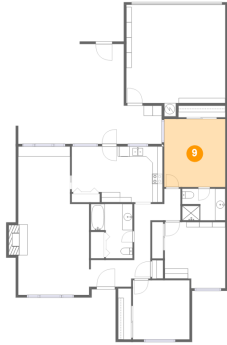


Dimensions: 28'2" x 19'7"  
Area: 330 sq. ft  
Counted as living area: No

Heated: No  
Finished: Yes  
Enclosed: No  
Contiguous: Yes  
Permitted: Yes  
Wet space: No  
Addition: No  
Conversion: No

**1939 West Santa Ana Avenue, Fresno, Fresno County,  
California, United States, 93705, 1939 W Santa Ana**

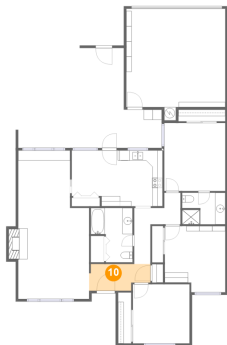
**9 Floor 1 - Bedroom**



**Dimensions:** 12'0" x 13'4"  
**Area:** 160 sq. ft  
**Counted as living area:** Yes

**Heated:** Yes  
**Finished:** Yes  
**Enclosed:** Yes  
**Contiguous:** Yes  
**Permitted:** Yes  
**Wet space:** No  
**Addition:** No  
**Conversion:** No

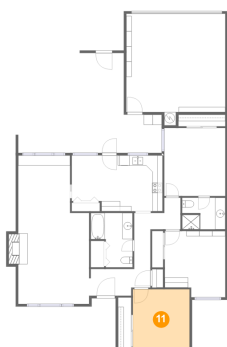
**10 Floor 1 - Entry**



**Dimensions:** 12'0" x 5'3"  
**Area:** 57 sq. ft  
**Counted as living area:** Yes

**Heated:** Yes  
**Finished:** Yes  
**Enclosed:** Yes  
**Contiguous:** Yes  
**Permitted:** Yes  
**Wet space:** No  
**Addition:** No  
**Conversion:** No

**11 Floor 1 - Bedroom**

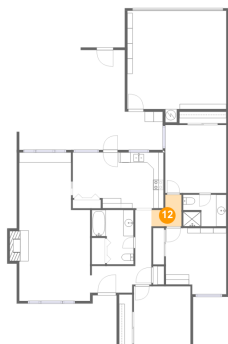


**Dimensions:** 11'1" x 11'7"  
**Area:** 129 sq. ft  
**Counted as living area:** Yes

**Heated:** Yes  
**Finished:** Yes  
**Enclosed:** Yes  
**Contiguous:** Yes  
**Permitted:** Yes  
**Wet space:** No  
**Addition:** No  
**Conversion:** No

1939 West Santa Ana Avenue, Fresno, Fresno County,  
California, United States, 93705, 1939 W Santa Ana

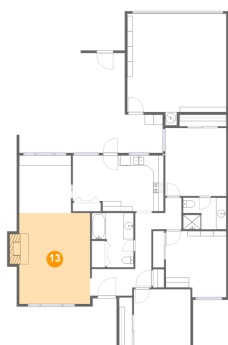
### 12 Floor 1 - Hall



Dimensions: 5'11" x 6'2"  
Area: 28 sq. ft  
Counted as living area: Yes

Heated: Yes  
Finished: Yes  
Enclosed: Yes  
Contiguous: Yes  
Permitted: Yes  
Wet space: No  
Addition: No  
Conversion: No

### 13 Floor 1 - Living Room



Dimensions: 13'11" x 17'10"  
Area: 259 sq. ft  
Counted as living area: Yes

Heated: Yes  
Finished: Yes  
Enclosed: Yes  
Contiguous: Yes  
Permitted: Yes  
Wet space: No  
Addition: No  
Conversion: No