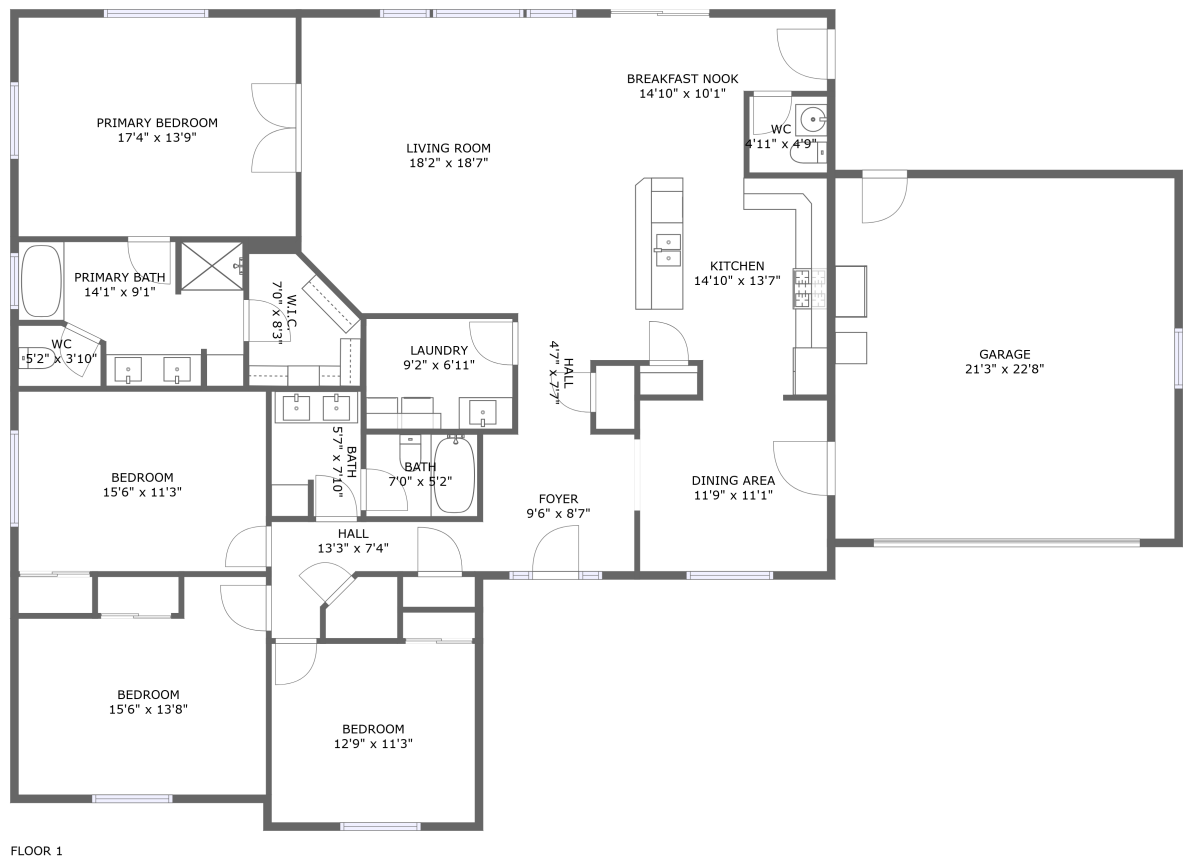
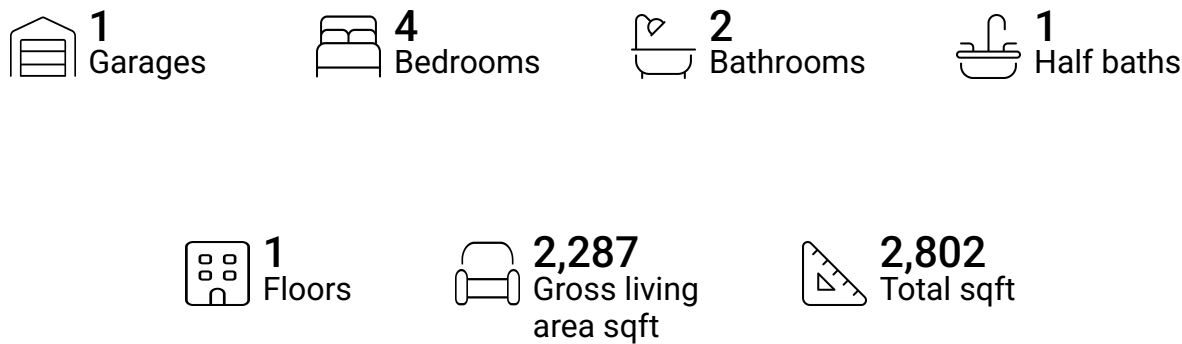


Home report

42621 Northwest Hidden Mountain Drive, Banks, Washington
County, Oregon, United States, 97106

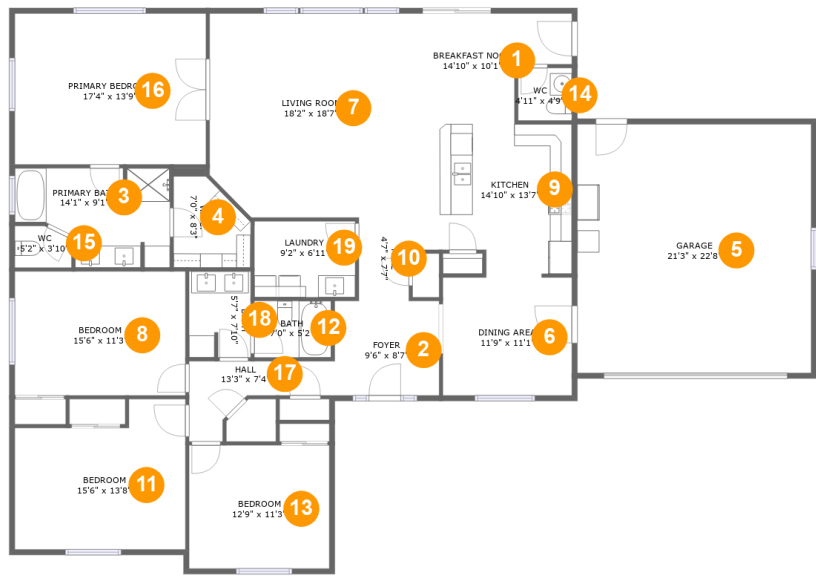


Property summary



Home report

42621 Northwest Hidden Mountain Drive, Banks, Washington
County, Oregon, United States, 97106



Room dimensions

Floor 1 Total sqft: 2802 Living area: 2287

#		Max Dimensions	sqft	Included
1	Breakfast Nook	14'10" x 10'1"	121 sq. ft	Yes
2	Foyer	9'6" x 8'7"	82 sq. ft	Yes
3	Primary Bath	14'1" x 9'1"	105 sq. ft	Yes
4	W.I.C.	7'0" x 8'3"	52 sq. ft	Yes
5	Garage	21'3" x 22'8"	482 sq. ft	No
6	Dining Area	11'9" x 11'1"	128 sq. ft	Yes
7	Living Room	18'2" x 18'7"	329 sq. ft	Yes
8	Bedroom	15'6" x 11'3"	175 sq. ft	Yes
9	Kitchen	14'10" x 13'7"	187 sq. ft	Yes
10	Hall	4'7" x 7'7"	35 sq. ft	Yes
11	Bedroom	15'6" x 13'8"	185 sq. ft	Yes

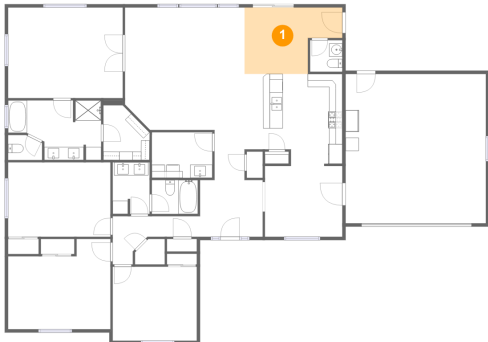
Home report

**42621 Northwest Hidden Mountain Drive, Banks, Washington
County, Oregon, United States, 97106**

#		Max Dimensions	sqft	Included
12	Bath	7'0" x 5'2"	36 sq. ft	Yes
13	Bedroom	12'9" x 11'3"	143 sq. ft	Yes
14	WC	4'11" x 4'9"	23 sq. ft	Yes
15	WC	5'2" x 3'10"	18 sq. ft	Yes
16	Primary Bedroom	17'4" x 13'9"	239 sq. ft	Yes
17	Hall	13'3" x 7'4"	57 sq. ft	Yes
18	Bath	5'7" x 7'10"	43 sq. ft	Yes
19	Laundry	9'2" x 6'11"	64 sq. ft	Yes

42621 Northwest Hidden Mountain Drive, Banks, Washington
County, Oregon, United States, 97106

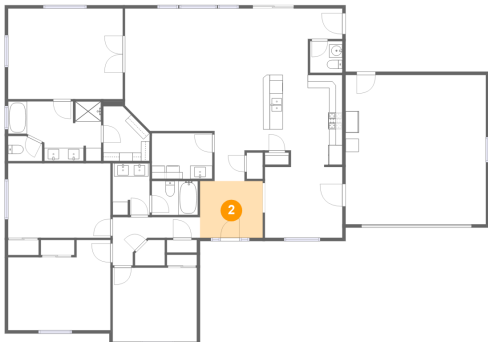
1 Floor 1 - Breakfast Nook



Max Dimensions: 14'10" x 10'1"
Calculated Area: 121 sq. ft
Included: Yes

Heated: Yes
Finished: Yes
Enclosed: Yes
Contiguous: Yes
Permitted: Yes
Wet space: No
Addition: No
Conversion: No

2 Floor 1 - Foyer

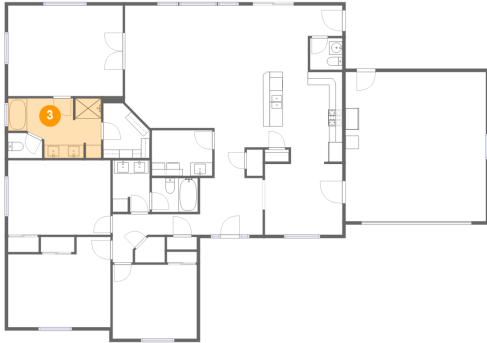


Max Dimensions: 9'6" x 8'7"
Calculated Area: 82 sq. ft
Included: Yes

Heated: Yes
Finished: Yes
Enclosed: Yes
Contiguous: Yes
Permitted: Yes
Wet space: No
Addition: No
Conversion: No

42621 Northwest Hidden Mountain Drive, Banks, Washington
County, Oregon, United States, 97106

3 Floor 1 - Primary Bath



Max Dimensions: 14'1" x 9'1"
Calculated Area: 105 sq. ft
Included: Yes

Heated: Yes
Finished: Yes
Enclosed: Yes
Contiguous: Yes
Permitted: Yes
Wet space: Yes
Addition: No
Conversion: No

4 Floor 1 - W.I.C.



Max Dimensions: 7'0" x 8'3"
Calculated Area: 52 sq. ft
Included: Yes

Heated: Yes
Finished: Yes
Enclosed: Yes
Contiguous: Yes
Permitted: Yes
Wet space: No
Addition: No
Conversion: No

5 Floor 1 - Garage



Max Dimensions: 21'3" x 22'8"
Calculated Area: 482 sq. ft
Included: No

Heated: No
Finished: No
Enclosed: Yes
Contiguous: Yes
Permitted: Yes
Wet space: No
Addition: No
Conversion: No

42621 Northwest Hidden Mountain Drive, Banks, Washington
County, Oregon, United States, 97106

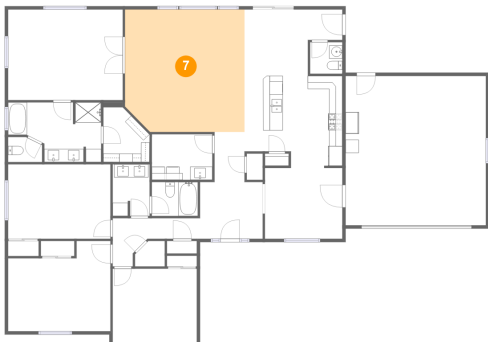
6 Floor 1 - Dining Area



Max Dimensions: 11'9" x 11'1"
Calculated Area: 128 sq. ft
Included: Yes

Heated: Yes
Finished: Yes
Enclosed: Yes
Contiguous: Yes
Permitted: Yes
Wet space: No
Addition: No
Conversion: No

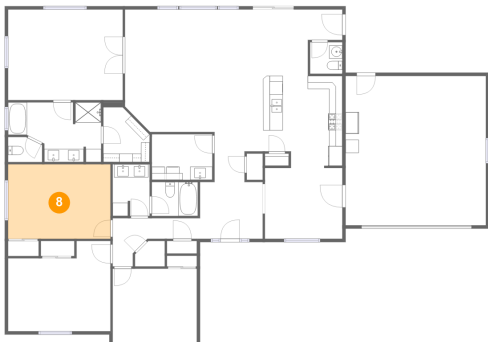
7 Floor 1 - Living Room



Max Dimensions: 18'2" x 18'7"
Calculated Area: 329 sq. ft
Included: Yes

Heated: Yes
Finished: Yes
Enclosed: Yes
Contiguous: Yes
Permitted: Yes
Wet space: No
Addition: No
Conversion: No

8 Floor 1 - Bedroom

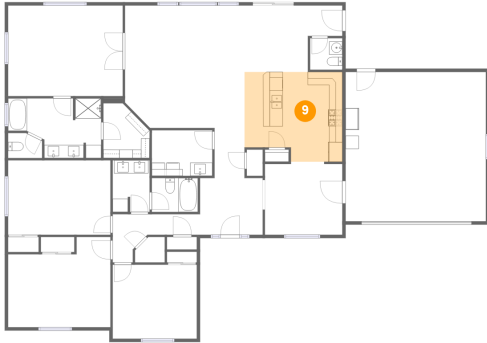


Max Dimensions: 15'6" x 11'3"
Calculated Area: 175 sq. ft
Included: Yes

Heated: Yes
Finished: Yes
Enclosed: Yes
Contiguous: Yes
Permitted: Yes
Wet space: No
Addition: No
Conversion: No

42621 Northwest Hidden Mountain Drive, Banks, Washington
County, Oregon, United States, 97106

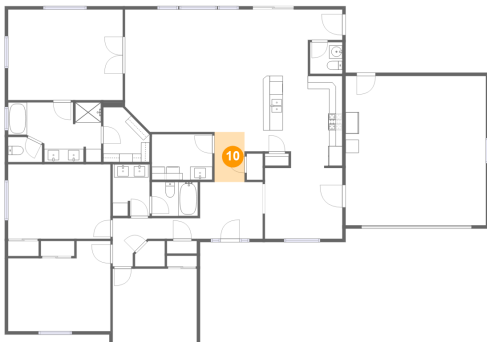
9 Floor 1 - Kitchen



Max Dimensions: 14'10" x 13'7"
Calculated Area: 187 sq. ft
Included: Yes

Heated: Yes
Finished: Yes
Enclosed: Yes
Contiguous: Yes
Permitted: Yes
Wet space: No
Addition: No
Conversion: No

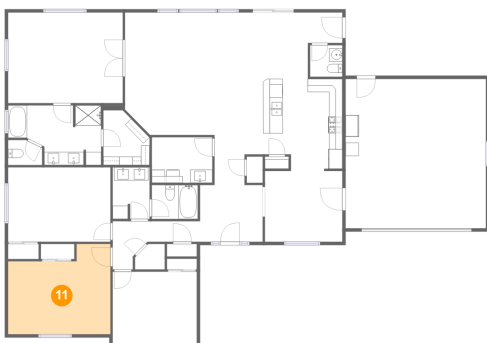
10 Floor 1 - Hall



Max Dimensions: 4'7" x 7'7"
Calculated Area: 35 sq. ft
Included: Yes

Heated: Yes
Finished: Yes
Enclosed: Yes
Contiguous: Yes
Permitted: Yes
Wet space: No
Addition: No
Conversion: No

11 Floor 1 - Bedroom



Max Dimensions: 15'6" x 13'8"
Calculated Area: 185 sq. ft
Included: Yes

Heated: Yes
Finished: Yes
Enclosed: Yes
Contiguous: Yes
Permitted: Yes
Wet space: No
Addition: No
Conversion: No

42621 Northwest Hidden Mountain Drive, Banks, Washington
County, Oregon, United States, 97106

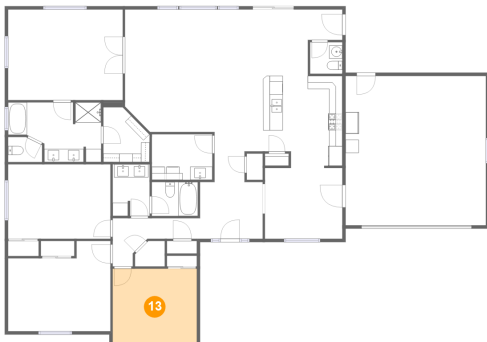
12 Floor 1 - Bath



Max Dimensions: 7'0" x 5'2"
Calculated Area: 36 sq. ft
Included: Yes

Heated: Yes
Finished: Yes
Enclosed: Yes
Contiguous: Yes
Permitted: Yes
Wet space: Yes
Addition: No
Conversion: No

13 Floor 1 - Bedroom



Max Dimensions: 12'9" x 11'3"
Calculated Area: 143 sq. ft
Included: Yes

Heated: Yes
Finished: Yes
Enclosed: Yes
Contiguous: Yes
Permitted: Yes
Wet space: No
Addition: No
Conversion: No

14 Floor 1 - WC



Max Dimensions: 4'11" x 4'9"
Calculated Area: 23 sq. ft
Included: Yes

Heated: Yes
Finished: Yes
Enclosed: Yes
Contiguous: Yes
Permitted: Yes
Wet space: Yes
Addition: No
Conversion: No

42621 Northwest Hidden Mountain Drive, Banks, Washington
County, Oregon, United States, 97106

15 Floor 1 - WC



Max Dimensions: 5'2" x 3'10"
Calculated Area: 18 sq. ft
Included: Yes

Heated: Yes
Finished: Yes
Enclosed: Yes
Contiguous: Yes
Permitted: Yes
Wet space: Yes
Addition: No
Conversion: No

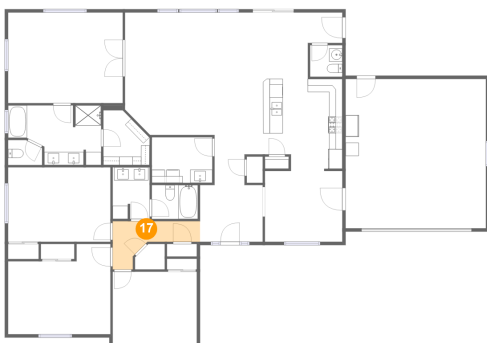
16 Floor 1 - Primary Bedroom



Max Dimensions: 17'4" x 13'9"
Calculated Area: 239 sq. ft
Included: Yes

Heated: Yes
Finished: Yes
Enclosed: Yes
Contiguous: Yes
Permitted: Yes
Wet space: No
Addition: No
Conversion: No

17 Floor 1 - Hall

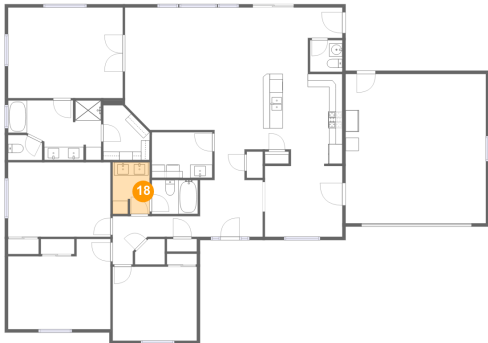


Max Dimensions: 13'3" x 7'4"
Calculated Area: 57 sq. ft
Included: Yes

Heated: Yes
Finished: Yes
Enclosed: Yes
Contiguous: Yes
Permitted: Yes
Wet space: No
Addition: No
Conversion: No

42621 Northwest Hidden Mountain Drive, Banks, Washington
County, Oregon, United States, 97106

18 Floor 1 - Bath



Max Dimensions: 5'7" x 7'10"
Calculated Area: 43 sq. ft
Included: Yes

Heated: Yes
Finished: Yes
Enclosed: Yes
Contiguous: Yes
Permitted: Yes
Wet space: Yes
Addition: No
Conversion: No

19 Floor 1 - Laundry



Max Dimensions: 9'2" x 6'11"
Calculated Area: 64 sq. ft
Included: Yes

Heated: Yes
Finished: Yes
Enclosed: Yes
Contiguous: Yes
Permitted: Yes
Wet space: No
Addition: No
Conversion: No