

Home report

49 Wheatland Circle, North Cornwall Township, Lebanon,
Lebanon County, Pennsylvania, United States, 17042



Total Area: 4594 sq. ft

Below Ground: 1555 sq. ft, Floor 2: 2242 sq. ft, Floor 3: 797 sq. ft
Excluded: Basement 523 sq. ft, Low ceiling 116 sq. ft, Garage 747 sq. ft, Porch 111 sq. ft,
Deck 304 sq. ft, Open to below 460 sq. ft, Walls: 355 sq. ft

Property summary

 **3** Floors

 **4** Bedrooms

 **3** Bathrooms

Home report

**49 Wheatland Circle, North Cornwall Township, Lebanon,
Lebanon County, Pennsylvania, United States, 17042**



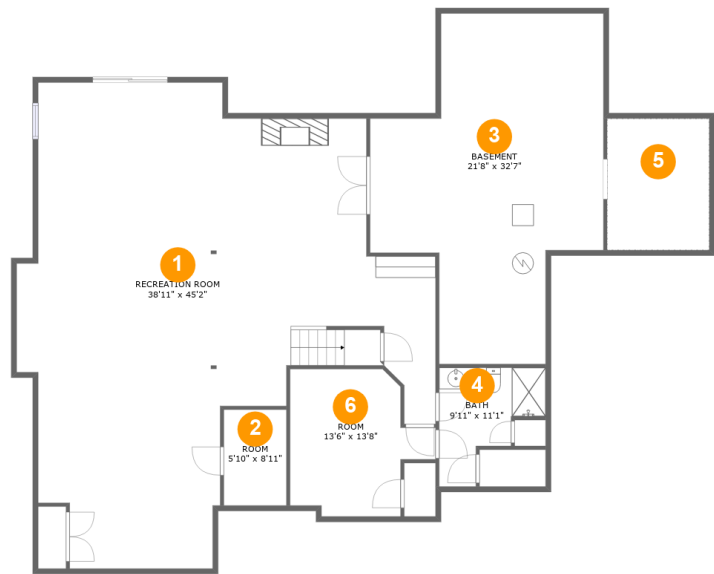
1
Half baths



1
Garages

Home report

49 Wheatland Circle, North Cornwall Township, Lebanon,
Lebanon County, Pennsylvania, United States, 17042

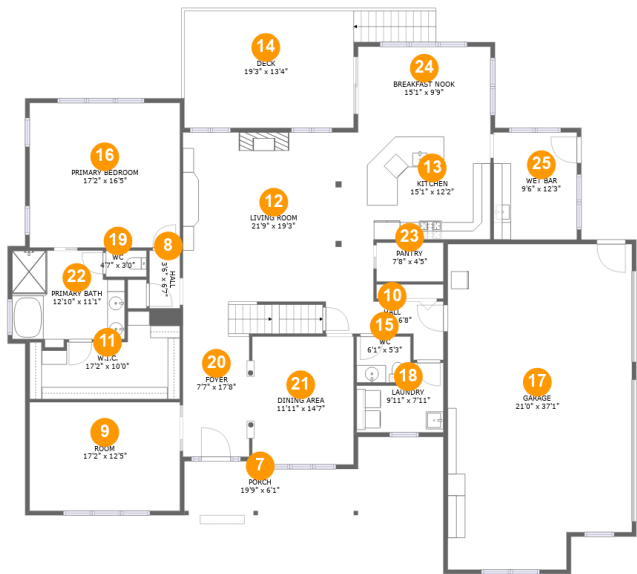


Room dimensions

Floor 1 Below ground Total:1555sqft Excluded: 639sqft

#		Max Dimensions	sqft	Included
1	Recreation Room	38'11" x 45'2"	1178 sq. ft	Yes
2	Room	5'10" x 8'11"	52 sq. ft	Yes
3	Basement	21'8" x 32'7"	519 sq. ft	No
4	Bath	9'11" x 11'1"	76 sq. ft	Yes
5	Crawl Space	9'6" x 12'3"	116 sq. ft	No
6	Room	13'6" x 13'8"	146 sq. ft	Yes

49 Wheatland Circle, North Cornwall Township, Lebanon,
Lebanon County, Pennsylvania, United States, 17042



Room dimensions

Floor 2 Total:2242sqft Excluded: 1162sqft

#		Max Dimensions	sqft	Included
7	Porch	19'9" x 6'1"	111 sq. ft	No
8	Hall	3'6" x 6'7"	23 sq. ft	Yes
9	Room	17'2" x 12'5"	212 sq. ft	Yes
10	Hall	13'5" x 6'8"	59 sq. ft	Yes
11	W.I.C.	17'2" x 10'0"	130 sq. ft	Yes
12	Living Room	21'9" x 19'3"	397 sq. ft	Yes
13	Kitchen	15'1" x 12'2"	185 sq. ft	Yes
14	Deck	19'3" x 13'4"	304 sq. ft	No
15	WC	6'1" x 5'3"	32 sq. ft	Yes
16	Primary Bedroom	17'2" x 16'5"	282 sq. ft	Yes
17	Garage	21'0" x 37'1"	747 sq. ft	No

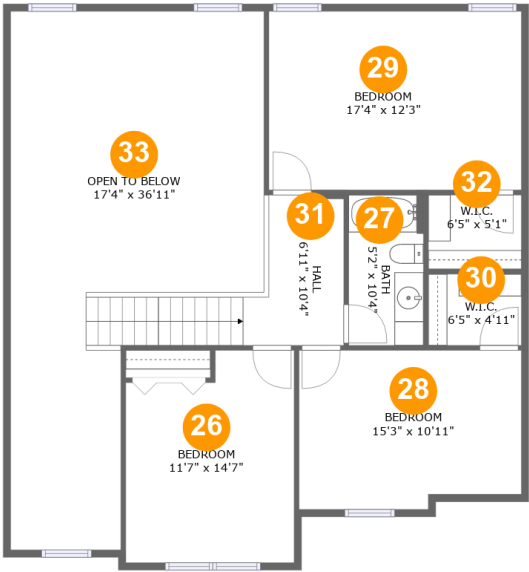
Home report

**49 Wheatland Circle, North Cornwall Township, Lebanon,
Lebanon County, Pennsylvania, United States, 17042**

#		Max Dimensions	sqft	Included
18	Laundry	9'11" x 7'11"	62 sq. ft	Yes
19	WC	4'7" x 3'0"	14 sq. ft	Yes
20	Foyer	7'7" x 17'8"	162 sq. ft	Yes
21	Dining Area	11'11" x 14'7"	172 sq. ft	Yes
22	Primary Bath	12'10" x 11'1"	124 sq. ft	Yes
23	Pantry	7'8" x 4'5"	34 sq. ft	Yes
24	Breakfast Nook	15'1" x 9'9"	147 sq. ft	Yes
25	Wet Bar	9'6" x 12'3"	116 sq. ft	Yes

Home report

49 Wheatland Circle, North Cornwall Township, Lebanon,
Lebanon County, Pennsylvania, United States, 17042



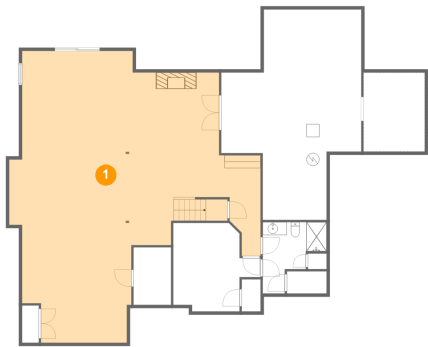
Room dimensions

Floor 3 Total:797sqft Excluded: 460sqft

#		Max Dimensions	sqft	Included
26	Bedroom	11'7" x 14'7"	155 sq. ft	Yes
27	Bath	5'2" x 10'4"	53 sq. ft	Yes
28	Bedroom	15'3" x 10'11"	160 sq. ft	Yes
29	Bedroom	17'4" x 12'3"	213 sq. ft	Yes
30	W.I.C.	6'5" x 4'11"	31 sq. ft	Yes
31	Hall	6'11" x 10'4"	102 sq. ft	Yes
32	W.I.C.	6'5" x 5'1"	33 sq. ft	Yes
33	Open To Below	17'4" x 36'11"	460 sq. ft	No

49 Wheatland Circle, North Cornwall Township, Lebanon,
Lebanon County, Pennsylvania, United States, 17042

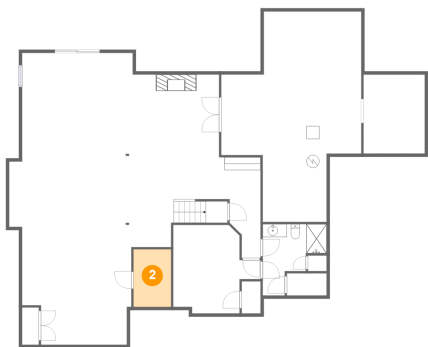
1 Floor 1 - Recreation Room



Max Dimensions: 38'11" x 45'2"
Calculated Area: 1178 sq. ft
Included: Yes

Heated: Yes
Finished: Yes
Enclosed: Yes
Contiguous: Yes
Permitted: Yes
Wet space: No
Addition: No
Conversion: No

2 Floor 1 - Room

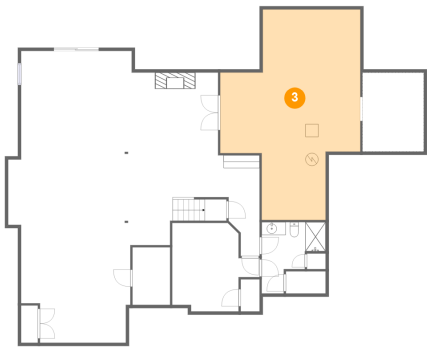


Max Dimensions: 5'10" x 8'11"
Calculated Area: 52 sq. ft
Included: Yes

Heated: Yes
Finished: Yes
Enclosed: Yes
Contiguous: Yes
Permitted: Yes
Wet space: No
Addition: No
Conversion: No

49 Wheatland Circle, North Cornwall Township, Lebanon,
Lebanon County, Pennsylvania, United States, 17042

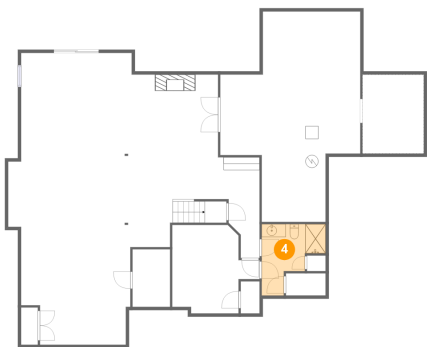
3 Floor 1 - Basement



Max Dimensions: 21'8" x 32'7"
Calculated Area: 519 sq. ft
Included: No

Heated: Yes
Finished: No
Enclosed: Yes
Contiguous: Yes
Permitted: Yes
Wet space: No
Addition: No
Conversion: No

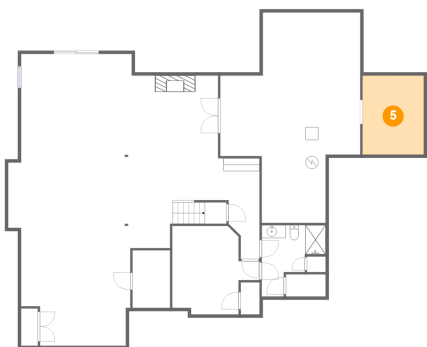
4 Floor 1 - Bath



Max Dimensions: 9'11" x 11'1"
Calculated Area: 76 sq. ft
Included: Yes

Heated: Yes
Finished: Yes
Enclosed: Yes
Contiguous: Yes
Permitted: Yes
Wet space: Yes
Addition: No
Conversion: No

5 Floor 1 - Crawl Space

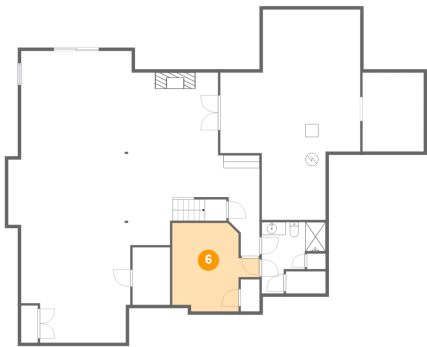


Max Dimensions: 9'6" x 12'3"
Calculated Area: 116 sq. ft
Included: No

Heated: No
Finished: No
Enclosed: No
Contiguous: Yes
Permitted: No
Wet space: No
Addition: No
Conversion: No

49 Wheatland Circle, North Cornwall Township, Lebanon,
Lebanon County, Pennsylvania, United States, 17042

6 Floor 1 - Room



Max Dimensions: 13'6" x 13'8"
Calculated Area: 146 sq. ft
Included: Yes

Heated: Yes
Finished: Yes
Enclosed: Yes
Contiguous: Yes
Permitted: Yes
Wet space: No
Addition: No
Conversion: No

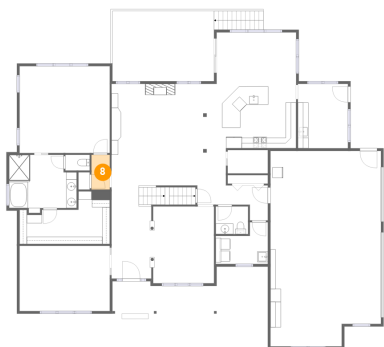
7 Floor 2 - Porch



Max Dimensions: 19'9" x 6'1"
Calculated Area: 111 sq. ft
Included: No

Heated: No
Finished: Yes
Enclosed: No
Contiguous: Yes
Permitted: Yes
Wet space: No
Addition: No
Conversion: No

8 Floor 2 - Hall

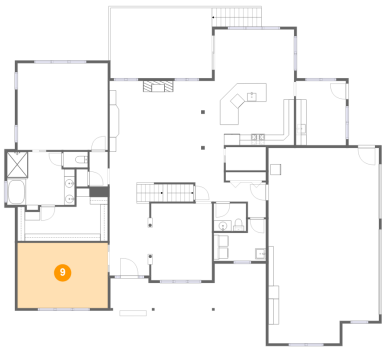


Max Dimensions: 3'6" x 6'7"
Calculated Area: 23 sq. ft
Included: Yes

Heated: Yes
Finished: Yes
Enclosed: Yes
Contiguous: Yes
Permitted: Yes
Wet space: No
Addition: No
Conversion: No

49 Wheatland Circle, North Cornwall Township, Lebanon,
Lebanon County, Pennsylvania, United States, 17042

9 Floor 2 - Room



Max Dimensions: 17'2" x 12'5"
Calculated Area: 212 sq. ft
Included: Yes

Heated: Yes
Finished: Yes
Enclosed: Yes
Contiguous: Yes
Permitted: Yes
Wet space: No
Addition: No
Conversion: No

10 Floor 2 - Hall



Max Dimensions: 13'5" x 6'8"
Calculated Area: 59 sq. ft
Included: Yes

Heated: Yes
Finished: Yes
Enclosed: Yes
Contiguous: Yes
Permitted: Yes
Wet space: No
Addition: No
Conversion: No

11 Floor 2 - W.I.C.



Max Dimensions: 17'2" x 10'0"
Calculated Area: 130 sq. ft
Included: Yes

Heated: Yes
Finished: Yes
Enclosed: Yes
Contiguous: Yes
Permitted: Yes
Wet space: No
Addition: No
Conversion: No

49 Wheatland Circle, North Cornwall Township, Lebanon,
Lebanon County, Pennsylvania, United States, 17042

12 Floor 2 - Living Room



Max Dimensions: 21'9" x 19'3"
Calculated Area: 397 sq. ft
Included: Yes

Heated: Yes
Finished: Yes
Enclosed: Yes
Contiguous: Yes
Permitted: Yes
Wet space: No
Addition: No
Conversion: No

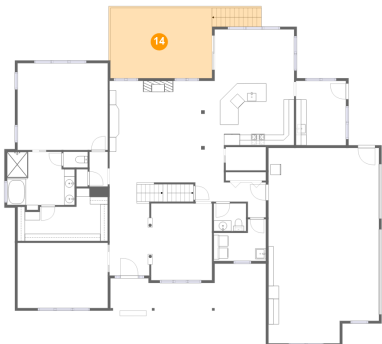
13 Floor 2 - Kitchen



Max Dimensions: 15'1" x 12'2"
Calculated Area: 185 sq. ft
Included: Yes

Heated: Yes
Finished: Yes
Enclosed: Yes
Contiguous: Yes
Permitted: Yes
Wet space: No
Addition: No
Conversion: No

14 Floor 2 - Deck

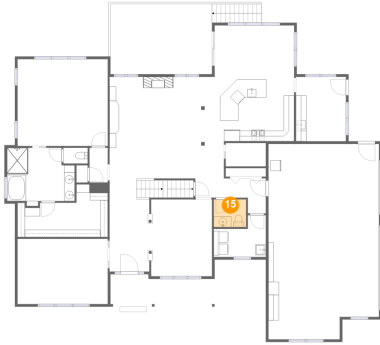


Max Dimensions: 19'3" x 13'4"
Calculated Area: 304 sq. ft
Included: No

Heated: No
Finished: Yes
Enclosed: No
Contiguous: Yes
Permitted: Yes
Wet space: No
Addition: No
Conversion: No

49 Wheatland Circle, North Cornwall Township, Lebanon,
Lebanon County, Pennsylvania, United States, 17042

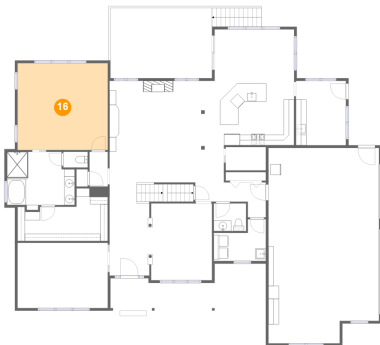
15 Floor 2 - WC



Max Dimensions: 6'1" x 5'3"
Calculated Area: 32 sq. ft
Included: Yes

Heated: Yes
Finished: Yes
Enclosed: Yes
Contiguous: Yes
Permitted: Yes
Wet space: Yes
Addition: No
Conversion: No

16 Floor 2 - Primary Bedroom



Max Dimensions: 17'2" x 16'5"
Calculated Area: 282 sq. ft
Included: Yes

Heated: Yes
Finished: Yes
Enclosed: Yes
Contiguous: Yes
Permitted: Yes
Wet space: No
Addition: No
Conversion: No

17 Floor 2 - Garage



Max Dimensions: 21'0" x 37'1"
Calculated Area: 747 sq. ft
Included: No

Heated: No
Finished: No
Enclosed: Yes
Contiguous: Yes
Permitted: Yes
Wet space: No
Addition: No
Conversion: No

49 Wheatland Circle, North Cornwall Township, Lebanon,
Lebanon County, Pennsylvania, United States, 17042

18 Floor 2 - Laundry



Max Dimensions: 9'11" x 7'11"
Calculated Area: 62 sq. ft
Included: Yes

Heated: Yes
Finished: Yes
Enclosed: Yes
Contiguous: Yes
Permitted: Yes
Wet space: No
Addition: No
Conversion: No

19 Floor 2 - WC



Max Dimensions: 4'7" x 3'0"
Calculated Area: 14 sq. ft
Included: Yes

Heated: Yes
Finished: Yes
Enclosed: Yes
Contiguous: Yes
Permitted: Yes
Wet space: No
Addition: No
Conversion: No

20 Floor 2 - Foyer

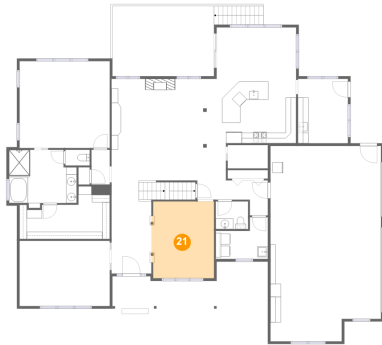


Max Dimensions: 7'7" x 17'8"
Calculated Area: 162 sq. ft
Included: Yes

Heated: Yes
Finished: Yes
Enclosed: Yes
Contiguous: Yes
Permitted: Yes
Wet space: No
Addition: No
Conversion: No

49 Wheatland Circle, North Cornwall Township, Lebanon,
Lebanon County, Pennsylvania, United States, 17042

21 Floor 2 - Dining Area



Max Dimensions: 11'11" x 14'7"
Calculated Area: 172 sq. ft
Included: Yes

Heated: Yes
Finished: Yes
Enclosed: Yes
Contiguous: Yes
Permitted: Yes
Wet space: No
Addition: No
Conversion: No

22 Floor 2 - Primary Bath



Max Dimensions: 12'10" x 11'1"
Calculated Area: 124 sq. ft
Included: Yes

Heated: Yes
Finished: Yes
Enclosed: Yes
Contiguous: Yes
Permitted: Yes
Wet space: Yes
Addition: No
Conversion: No

23 Floor 2 - Pantry



Max Dimensions: 7'8" x 4'5"
Calculated Area: 34 sq. ft
Included: Yes

Heated: Yes
Finished: Yes
Enclosed: Yes
Contiguous: Yes
Permitted: Yes
Wet space: No
Addition: No
Conversion: No

49 Wheatland Circle, North Cornwall Township, Lebanon,
Lebanon County, Pennsylvania, United States, 17042

24 Floor 2 - Breakfast Nook



Max Dimensions: 15'1" x 9'9"
Calculated Area: 147 sq. ft
Included: Yes

Heated: Yes
Finished: Yes
Enclosed: Yes
Contiguous: Yes
Permitted: Yes
Wet space: No
Addition: No
Conversion: No

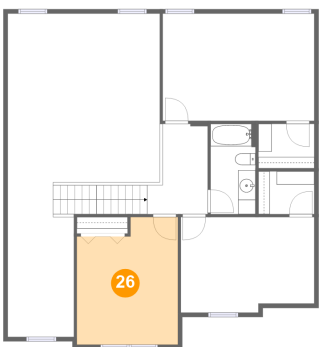
25 Floor 2 - Wet Bar



Max Dimensions: 9'6" x 12'3"
Calculated Area: 116 sq. ft
Included: Yes

Heated: Yes
Finished: Yes
Enclosed: Yes
Contiguous: Yes
Permitted: Yes
Wet space: No
Addition: No
Conversion: No

26 Floor 3 - Bedroom

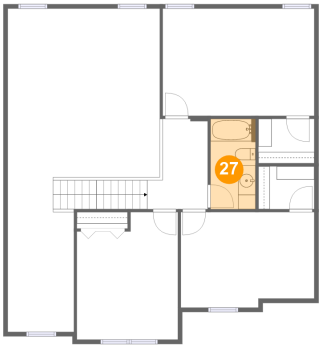


Max Dimensions: 11'7" x 14'7"
Calculated Area: 155 sq. ft
Included: Yes

Heated: Yes
Finished: Yes
Enclosed: Yes
Contiguous: Yes
Permitted: Yes
Wet space: No
Addition: No
Conversion: No

49 Wheatland Circle, North Cornwall Township, Lebanon,
Lebanon County, Pennsylvania, United States, 17042

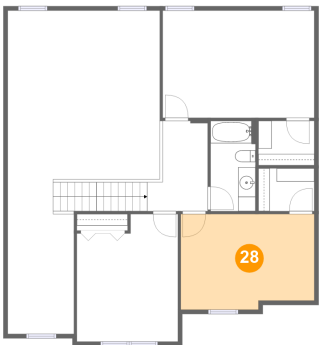
27 Floor 3 - Bath



Max Dimensions: 5'2" x 10'4"
Calculated Area: 53 sq. ft
Included: Yes

Heated: Yes
Finished: Yes
Enclosed: Yes
Contiguous: Yes
Permitted: Yes
Wet space: Yes
Addition: No
Conversion: No

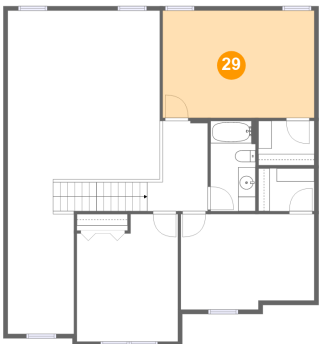
28 Floor 3 - Bedroom



Max Dimensions: 15'3" x 10'11"
Calculated Area: 160 sq. ft
Included: Yes

Heated: Yes
Finished: Yes
Enclosed: Yes
Contiguous: Yes
Permitted: Yes
Wet space: No
Addition: No
Conversion: No

29 Floor 3 - Bedroom

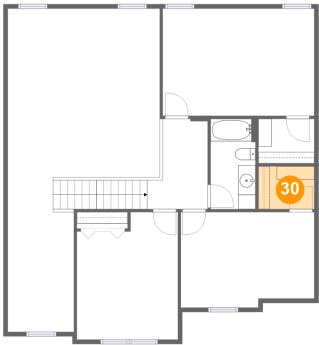


Max Dimensions: 17'4" x 12'3"
Calculated Area: 213 sq. ft
Included: Yes

Heated: Yes
Finished: Yes
Enclosed: Yes
Contiguous: Yes
Permitted: Yes
Wet space: No
Addition: No
Conversion: No

49 Wheatland Circle, North Cornwall Township, Lebanon,
Lebanon County, Pennsylvania, United States, 17042

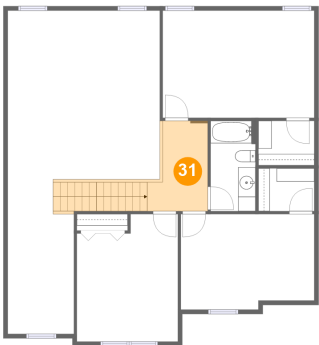
30 Floor 3 - W.I.C.



Max Dimensions: 6'5" x 4'11"
Calculated Area: 31 sq. ft
Included: Yes

Heated: Yes
Finished: Yes
Enclosed: Yes
Contiguous: Yes
Permitted: Yes
Wet space: No
Addition: No
Conversion: No

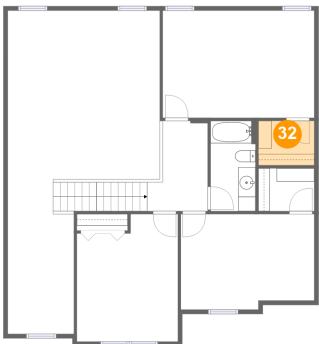
31 Floor 3 - Hall



Max Dimensions: 6'11" x 10'4"
Calculated Area: 102 sq. ft
Included: Yes

Heated: Yes
Finished: Yes
Enclosed: Yes
Contiguous: Yes
Permitted: Yes
Wet space: No
Addition: No
Conversion: No

32 Floor 3 - W.I.C.

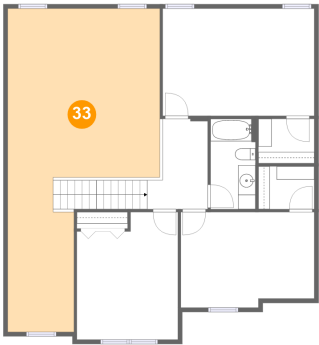


Max Dimensions: 6'5" x 5'1"
Calculated Area: 33 sq. ft
Included: Yes

Heated: Yes
Finished: Yes
Enclosed: Yes
Contiguous: Yes
Permitted: Yes
Wet space: No
Addition: No
Conversion: No

49 Wheatland Circle, North Cornwall Township, Lebanon,
Lebanon County, Pennsylvania, United States, 17042

33 Floor 3 - Open To Below



Max Dimensions: 17'4" x 36'11"
Calculated Area: 460 sq. ft
Included: No

Heated: No
Finished: No
Enclosed: No
Contiguous: Yes
Permitted: No
Wet space: No
Addition: No
Conversion: No