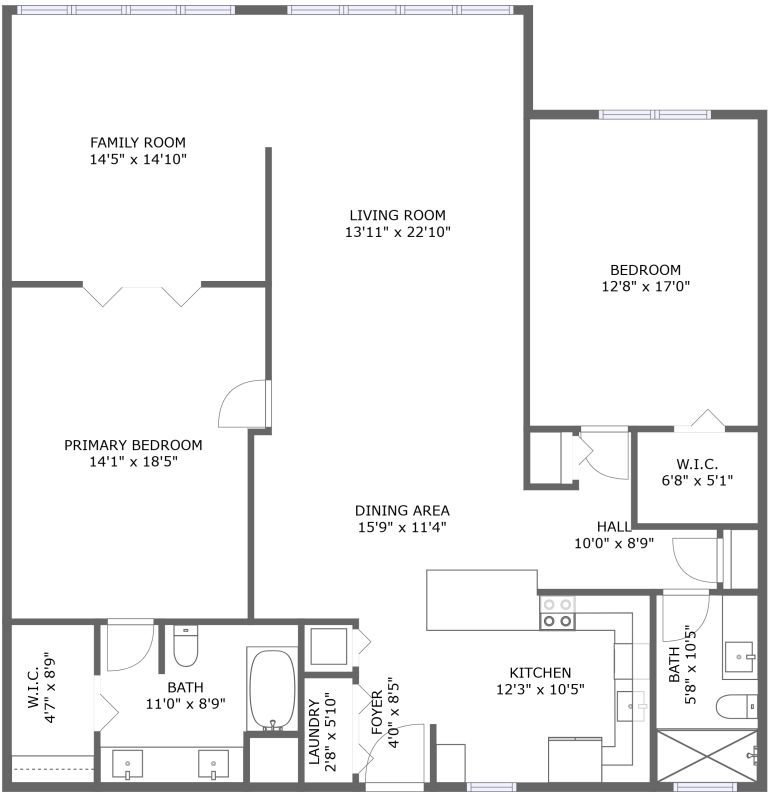


5200 Brittany Drive South, Isla Del Sol, St. Petersburg,
Pinellas County, Florida, United States, 33715, 1503



FLOOR 1

Property summary



0
Garages



2
Bedrooms



2
Bathrooms



0
Half baths



1
Floors

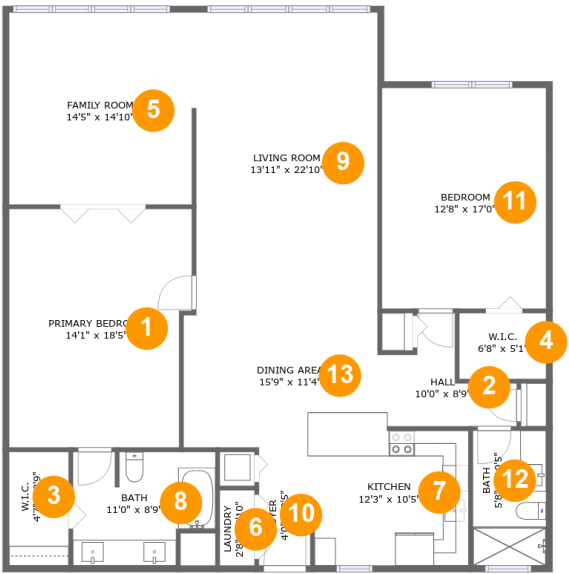


1,691
Gross living
area sqft



1,691
Total sqft

5200 Brittany Drive South, Isla Del Sol, St. Petersburg,
Pinellas County, Florida, United States, 33715, 1503



Room dimensions

Floor 1

Total sqft: 1691

Living area: 1691

#		Dimensions	sqft	Counted as living area
1	Primary Bedroom	14'1" x 18'5"	249 sq. ft	Yes
2	Hall	10'0" x 8'9"	54 sq. ft	Yes
3	W.I.C.	4'7" x 8'9"	40 sq. ft	Yes
4	W.I.C.	6'8" x 5'1"	34 sq. ft	Yes
5	Family Room	14'5" x 14'10"	211 sq. ft	Yes
6	Laundry	2'8" x 5'10"	16 sq. ft	Yes
7	Kitchen	12'3" x 10'5"	135 sq. ft	Yes
8	Bath	11'0" x 8'9"	87 sq. ft	Yes
9	Living Room	13'11" x 22'10"	319 sq. ft	Yes
10	Foyer	4'0" x 8'5"	33 sq. ft	Yes
11	Bedroom	12'8" x 17'0"	215 sq. ft	Yes

**5200 Brittany Drive South, Isla Del Sol, St. Petersburg,
Pinellas County, Florida, United States, 33715, 1503**

#		Dimensions	sqft	Counted as living area
12	Bath	5'8" x 10'5"	59 sq. ft	Yes
13	Dining Area	15'9" x 11'4"	151 sq. ft	Yes

**5200 Brittany Drive South, Isla Del Sol, St. Petersburg,
Pinellas County, Florida, United States, 33715, 1503**

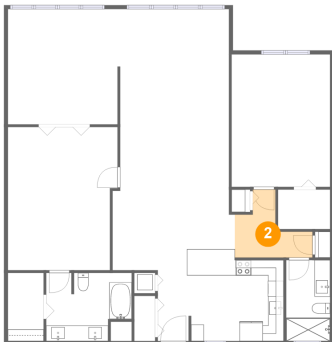
1 Floor 1 - Primary Bedroom



Dimensions: 14'1" x 18'5"
Area: 249 sq. ft
Counted as living area: Yes

Heated: Yes
Finished: Yes
Enclosed: Yes
Contiguous: Yes
Permitted: Yes
Wet space: No
Addition: No
Conversion: No

2 Floor 1 - Hall

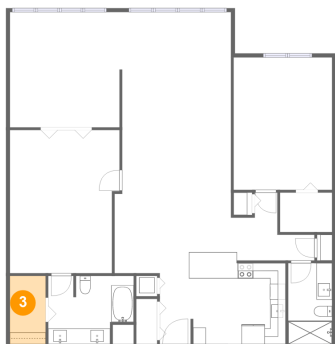


Dimensions: 10'0" x 8'9"
Area: 54 sq. ft
Counted as living area: Yes

Heated: Yes
Finished: Yes
Enclosed: Yes
Contiguous: Yes
Permitted: Yes
Wet space: No
Addition: No
Conversion: No

**5200 Brittany Drive South, Isla Del Sol, St. Petersburg,
Pinellas County, Florida, United States, 33715, 1503**

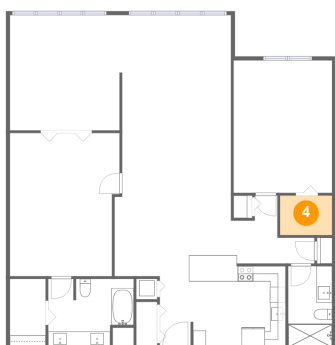
3 Floor 1 - W.I.C.



Dimensions: 4'7" x 8'9"
Area: 40 sq. ft
Counted as living area: Yes

Heated: Yes
Finished: Yes
Enclosed: Yes
Contiguous: Yes
Permitted: Yes
Wet space: No
Addition: No
Conversion: No

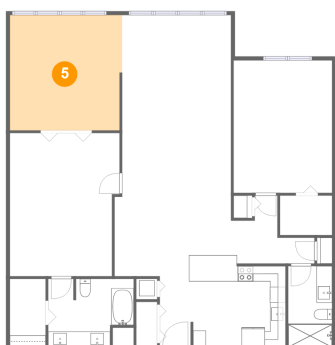
4 Floor 1 - W.I.C.



Dimensions: 6'8" x 5'1"
Area: 34 sq. ft
Counted as living area: Yes

Heated: Yes
Finished: Yes
Enclosed: Yes
Contiguous: Yes
Permitted: Yes
Wet space: No
Addition: No
Conversion: No

5 Floor 1 - Family Room



Dimensions: 14'5" x 14'10"
Area: 211 sq. ft
Counted as living area: Yes

Heated: Yes
Finished: Yes
Enclosed: Yes
Contiguous: Yes
Permitted: Yes
Wet space: No
Addition: No
Conversion: No

**5200 Brittany Drive South, Isla Del Sol, St. Petersburg,
Pinellas County, Florida, United States, 33715, 1503**

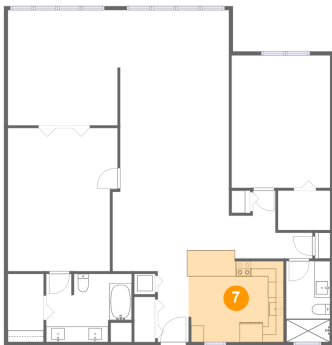
6 Floor 1 - Laundry



Dimensions: 2'8" x 5'10"
Area: 16 sq. ft
Counted as living area: Yes

Heated: Yes
Finished: Yes
Enclosed: Yes
Contiguous: Yes
Permitted: Yes
Wet space: No
Addition: No
Conversion: No

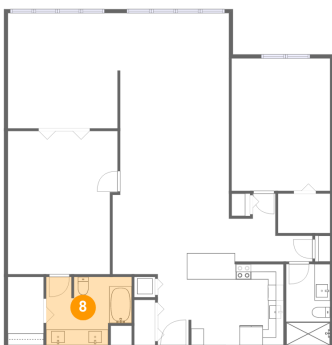
7 Floor 1 - Kitchen



Dimensions: 12'3" x 10'5"
Area: 135 sq. ft
Counted as living area: Yes

Heated: Yes
Finished: Yes
Enclosed: Yes
Contiguous: Yes
Permitted: Yes
Wet space: No
Addition: No
Conversion: No

8 Floor 1 - Bath

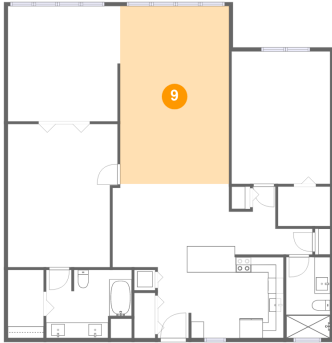


Dimensions: 11'0" x 8'9"
Area: 87 sq. ft
Counted as living area: Yes

Heated: Yes
Finished: Yes
Enclosed: Yes
Contiguous: Yes
Permitted: Yes
Wet space: Yes
Addition: No
Conversion: No

**5200 Brittany Drive South, Isla Del Sol, St. Petersburg,
Pinellas County, Florida, United States, 33715, 1503**

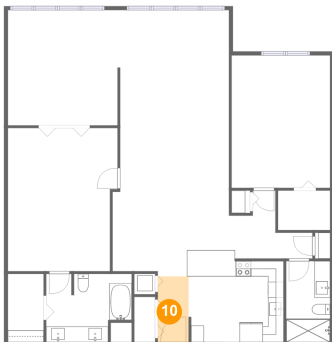
9 Floor 1 - Living Room



Dimensions: 13'11" x 22'10"
Area: 319 sq. ft
Counted as living area: Yes

Heated: Yes
Finished: Yes
Enclosed: Yes
Contiguous: Yes
Permitted: Yes
Wet space: No
Addition: No
Conversion: No

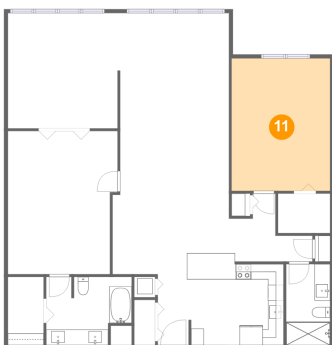
10 Floor 1 - Foyer



Dimensions: 4'0" x 8'5"
Area: 33 sq. ft
Counted as living area: Yes

Heated: Yes
Finished: Yes
Enclosed: Yes
Contiguous: Yes
Permitted: Yes
Wet space: No
Addition: No
Conversion: No

11 Floor 1 - Bedroom



Dimensions: 12'8" x 17'0"
Area: 215 sq. ft
Counted as living area: Yes

Heated: Yes
Finished: Yes
Enclosed: Yes
Contiguous: Yes
Permitted: Yes
Wet space: No
Addition: No
Conversion: No

**5200 Brittany Drive South, Isla Del Sol, St. Petersburg,
Pinellas County, Florida, United States, 33715, 1503**

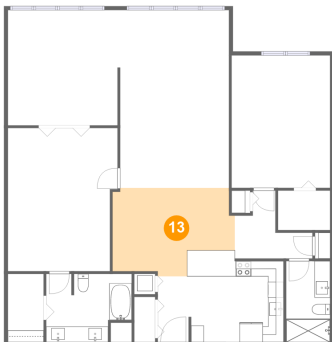
12 Floor 1 - Bath



Dimensions: 5'8" x 10'5"
Area: 59 sq. ft
Counted as living area: Yes

Heated: Yes
Finished: Yes
Enclosed: Yes
Contiguous: Yes
Permitted: Yes
Wet space: Yes
Addition: No
Conversion: No

13 Floor 1 - Dining Area



Dimensions: 15'9" x 11'4"
Area: 151 sq. ft
Counted as living area: Yes

Heated: Yes
Finished: Yes
Enclosed: Yes
Contiguous: Yes
Permitted: Yes
Wet space: No
Addition: No
Conversion: No