


Home report


18901 Shippings Road, Dewitt, Dinwiddie County, Virginia,
United States, 23840





Total Area: 4555 sq. ft
Below Ground: 2270 sq. ft, Floor 2: 2285 sq. ft
Excluded: Deck 682 sq. ft, Walls: 230 sq. ft

Property summary

 **2** Floors

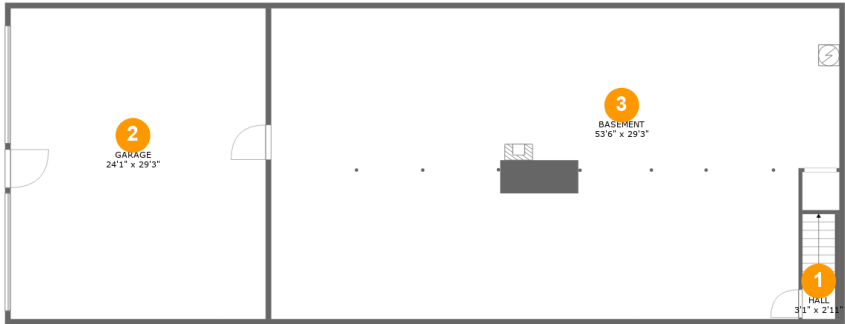
 **3** Bedrooms

 **2** Bathrooms

 **1** Garages

Home report

18901 Shippings Road, Dewitt, Dinwiddie County, Virginia,
United States, 23840



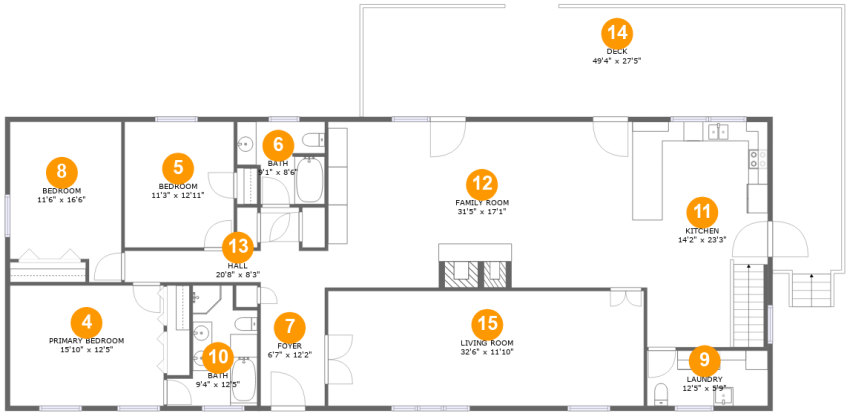
Room dimensions

Floor 1 Below ground Total:2270sqft Excluded: 0sqft

#		Max Dimensions	sqft	Included
1	Hall	3'1" x 2'11"	35 sq. ft	Yes
2	Garage	24'1" x 29'3"	704 sq. ft	Yes
3	Basement	53'6" x 29'3"	1512 sq. ft	Yes

Home report

18901 Shippings Road, Dewitt, Dinwiddie County, Virginia,
United States, 23840



Room dimensions

Floor 2 Total:2285sqft Excluded: 682sqft

#		Max Dimensions	sqft	Included
4	Primary Bedroom	15'10" x 12'5"	196 sq. ft	Yes
5	Bedroom	11'3" x 12'11"	146 sq. ft	Yes
6	Bath	9'1" x 8'6"	66 sq. ft	Yes
7	Foyer	6'7" x 12'2"	81 sq. ft	Yes
8	Bedroom	11'6" x 16'6"	170 sq. ft	Yes
9	Laundry	12'5" x 9'9"	71 sq. ft	Yes
10	Bath	9'4" x 12'5"	84 sq. ft	Yes
11	Kitchen	14'2" x 23'3"	319 sq. ft	Yes
12	Family Room	31'5" x 17'1"	533 sq. ft	Yes
13	Hall	20'8" x 8'3"	88 sq. ft	Yes
14	Deck	49'4" x 27'5"	682 sq. ft	No

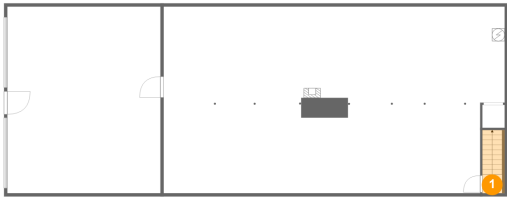
Home report

18901 Shippings Road, Dewitt, Dinwiddie County, Virginia,
United States, 23840

#		Max Dimensions	sqft	Included
15	Living Room	32'6" x 11'10"	385 sq. ft	Yes

18901 Shippings Road, Dewitt, Dinwiddie County, Virginia,
United States, 23840

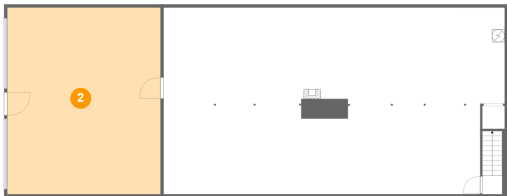
1 Floor 1 - Hall



Max Dimensions: 3'1" x 2'11"
Calculated Area: 35 sq. ft
Included: Yes

Heated: Yes
Finished: Yes
Enclosed: Yes
Contiguous: Yes
Permitted: Yes
Wet space: No
Addition: No
Conversion: No

2 Floor 1 - Garage

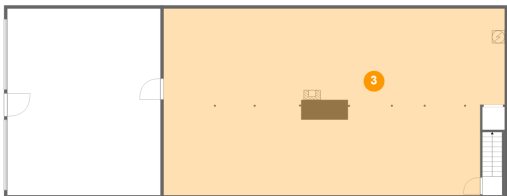


Max Dimensions: 24'1" x 29'3"
Calculated Area: 704 sq. ft
Included: No

Heated: No
Finished: Yes
Enclosed: Yes
Contiguous: Yes
Permitted: Yes
Wet space: No
Addition: No
Conversion: No

18901 Shippings Road, Dewitt, Dinwiddie County, Virginia,
United States, 23840

3 Floor 1 - Basement



Max Dimensions: 53'6" x 29'3"
Calculated Area: 1512 sq. ft
Included: Yes

Heated: Yes
Finished: Yes
Enclosed: Yes
Contiguous: Yes
Permitted: Yes
Wet space: No
Addition: No
Conversion: No

4 Floor 2 - Primary Bedroom



Max Dimensions: 15'10" x 12'5"
Calculated Area: 196 sq. ft
Included: Yes

Heated: Yes
Finished: Yes
Enclosed: Yes
Contiguous: Yes
Permitted: Yes
Wet space: No
Addition: No
Conversion: No

5 Floor 2 - Bedroom



Max Dimensions: 11'3" x 12'11"
Calculated Area: 146 sq. ft
Included: Yes

Heated: Yes
Finished: Yes
Enclosed: Yes
Contiguous: Yes
Permitted: Yes
Wet space: No
Addition: No
Conversion: No

18901 Shippings Road, Dewitt, Dinwiddie County, Virginia,
United States, 23840

6 Floor 2 - Bath



Max Dimensions: 9'1" x 8'6"
Calculated Area: 66 sq. ft
Included: Yes

Heated: Yes
Finished: Yes
Enclosed: Yes
Contiguous: Yes
Permitted: Yes
Wet space: Yes
Addition: No
Conversion: No

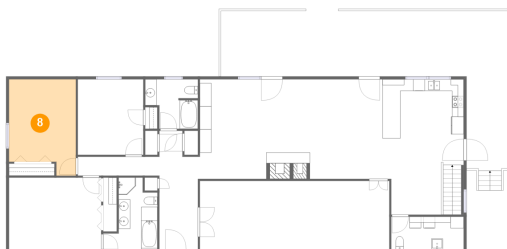
7 Floor 2 - Foyer



Max Dimensions: 6'7" x
12'2"
Calculated Area: 81 sq. ft
Included: Yes

Heated: Yes
Finished: Yes
Enclosed: Yes
Contiguous:
Yes
Permitted: Yes
Wet space: No
Addition: No
Conversion: No

8 Floor 2 - Bedroom



Max Dimensions: 11'6" x
16'6"
Calculated Area: 170 sq. ft
Included: Yes

Heated: Yes
Finished: Yes
Enclosed: Yes
Contiguous:
Yes
Permitted: Yes
Wet space: No
Addition: No
Conversion: No

18901 Shippings Road, Dewitt, Dinwiddie County, Virginia,
United States, 23840

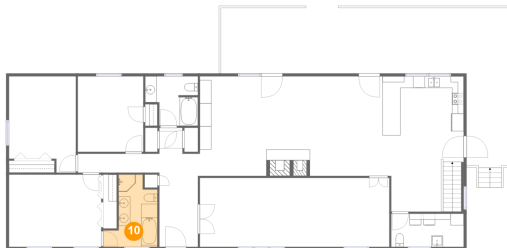
9 Floor 2 - Laundry



Max Dimensions: 12'5" x 5'9"
Calculated Area: 71 sq. ft
Included: Yes

Heated: Yes
Finished: Yes
Enclosed: Yes
Contiguous: Yes
Permitted: Yes
Wet space: No
Addition: No
Conversion: No

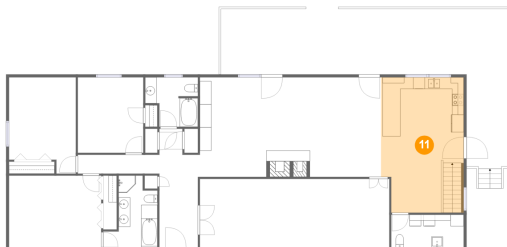
10 Floor 2 - Bath



Max Dimensions: 9'4" x 12'5"
Calculated Area: 84 sq. ft
Included: Yes

Heated: Yes
Finished: Yes
Enclosed: Yes
Contiguous: Yes
Permitted: Yes
Wet space: Yes
Addition: No
Conversion: No

11 Floor 2 - Kitchen



Max Dimensions: 14'2" x 23'3"
Calculated Area: 319 sq. ft
Included: Yes

Heated: Yes
Finished: Yes
Enclosed: Yes
Contiguous: Yes
Permitted: Yes
Wet space: No
Addition: No
Conversion: No

18901 Shippings Road, Dewitt, Dinwiddie County, Virginia,
United States, 23840

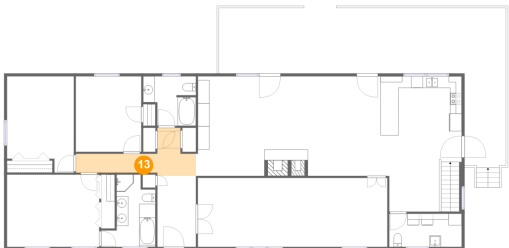
12 Floor 2 - Family Room



Max Dimensions: 31'5" x 17'1"
Calculated Area: 533 sq. ft
Included: Yes

Heated: Yes
Finished: Yes
Enclosed: Yes
Contiguous: Yes
Permitted: Yes
Wet space: No
Addition: No
Conversion: No

13 Floor 2 - Hall



Max Dimensions: 20'8" x 8'3"
Calculated Area: 88 sq. ft
Included: Yes

Heated: Yes
Finished: Yes
Enclosed: Yes
Contiguous: Yes
Permitted: Yes
Wet space: No
Addition: No
Conversion: No

14 Floor 2 - Deck



Max Dimensions: 49'4" x 27'5"
Calculated Area: 682 sq. ft
Included: No

Heated: No
Finished: Yes
Enclosed: No
Contiguous: Yes
Permitted: Yes
Wet space: No
Addition: No
Conversion: No

18901 Shippings Road, Dewitt, Dinwiddie County, Virginia,
United States, 23840

15 Floor 2 - Living Room



Max Dimensions: 32'6" x 11'10"
Calculated Area: 385 sq. ft
Included: Yes

Heated: Yes
Finished: Yes
Enclosed: Yes
Contiguous: Yes
Permitted: Yes
Wet space: No
Addition: No
Conversion: No