


1023 Brandi Way, Central Point, Oregon 97502, United States



Property summary

 **1** Garages

 **3** Bedrooms

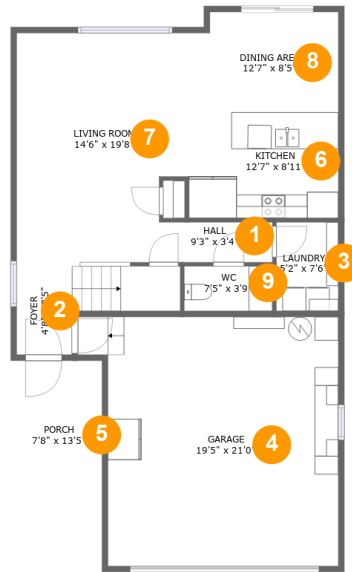
 **2** Bathrooms

 **1** Half baths

 **2** Floors

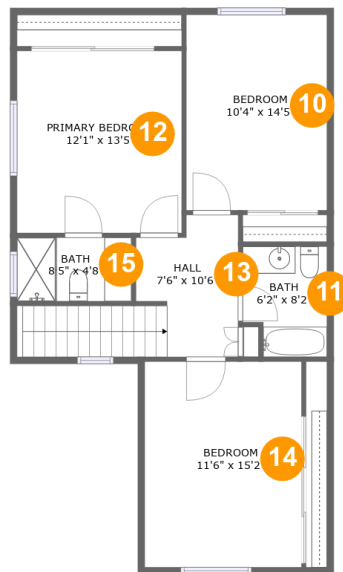
 **1,576** Gross living area sqft

 **2,126** Total sqft

1023 Brandi Way, Central Point, Oregon 97502, United States**Room dimensions****Floor 1****Total sqft: 1278 Living area: 728**

#		Dimensions	sqft	Counted as living area
1	Hall	9'3" x 3'4"	31 sq. ft	Yes
2	Foyer	4'8" x 7'5"	69 sq. ft	Yes
3	Laundry	5'2" x 7'6"	39 sq. ft	Yes
4	Garage	19'5" x 21'0"	416 sq. ft	No
5	Porch	7'8" x 13'5"	103 sq. ft	No
6	Kitchen	12'7" x 8'11"	112 sq. ft	Yes
7	Living Room	14'6" x 19'8"	267 sq. ft	Yes
8	Dining Area	12'7" x 8'5"	104 sq. ft	Yes
9	WC	7'5" x 3'9"	28 sq. ft	Yes

1023 Brandi Way, Central Point, Oregon 97502, United States



Room dimensions

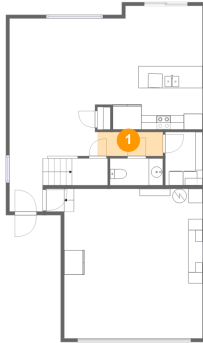
Floor 2

Total sqft: 848 Living area: 848

#		Dimensions	sqft	Counted as living area
10	Bedroom	10'4" x 14'5"	149 sq. ft	Yes
11	Bath	6'2" x 8'2"	47 sq. ft	Yes
12	Primary Bedroom	12'1" x 13'5"	163 sq. ft	Yes
13	Hall	7'6" x 10'6"	105 sq. ft	Yes
14	Bedroom	11'6" x 15'2"	175 sq. ft	Yes
15	Bath	8'5" x 4'8"	40 sq. ft	Yes

1023 Brandi Way, Central Point, Oregon 97502, United States

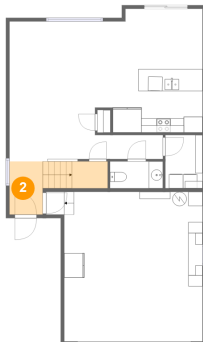
1 Floor 1 - Hall



Dimensions: 9'3" x 3'4"
Area: 31 sq. ft
Counted as living area: Yes

Heated: Yes
Finished: Yes
Enclosed: Yes
Contiguous: Yes
Permitted: Yes
Wet space: No
Addition: No
Conversion: No

2 Floor 1 - Foyer

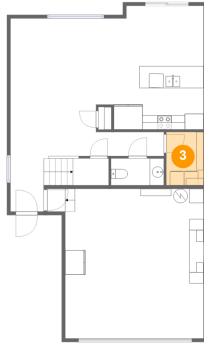


Dimensions: 4'8" x 7'5"
Area: 69 sq. ft
Counted as living area: Yes

Heated: Yes
Finished: Yes
Enclosed: Yes
Contiguous: Yes
Permitted: Yes
Wet space: No
Addition: No
Conversion: No

1023 Brandi Way, Central Point, Oregon 97502, United States

3 Floor 1 - Laundry



Dimensions: 5'2" x 7'6"
Area: 39 sq. ft
Counted as living area: Yes

Heated: Yes
Finished: Yes
Enclosed: Yes
Contiguous: Yes
Permitted: Yes
Wet space: No
Addition: No
Conversion: No

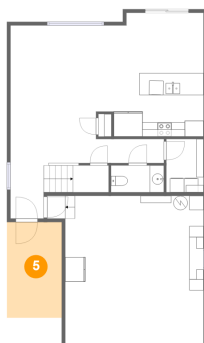
4 Floor 1 - Garage



Dimensions: 19'5" x 21'0"
Area: 416 sq. ft
Counted as living area: No

Heated: No
Finished: No
Enclosed: Yes
Contiguous: Yes
Permitted: Yes
Wet space: No
Addition: No
Conversion: No

5 Floor 1 - Porch

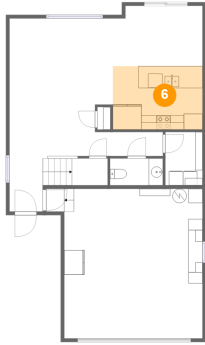


Dimensions: 7'8" x 13'5"
Area: 103 sq. ft
Counted as living area: No

Heated: No
Finished: Yes
Enclosed: No
Contiguous: Yes
Permitted: Yes
Wet space: No
Addition: No
Conversion: No

1023 Brandi Way, Central Point, Oregon 97502, United States

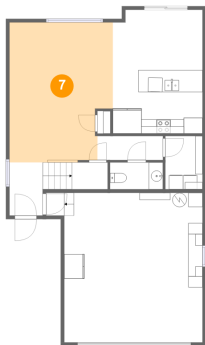
6 Floor 1 - Kitchen



Dimensions: 12'7" x 8'11"
Area: 112 sq. ft
Counted as living area: Yes

Heated: Yes
Finished: Yes
Enclosed: Yes
Contiguous: Yes
Permitted: Yes
Wet space: No
Addition: No
Conversion: No

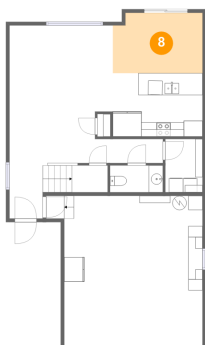
7 Floor 1 - Living Room



Dimensions: 14'6" x 19'8"
Area: 267 sq. ft
Counted as living area: Yes

Heated: Yes
Finished: Yes
Enclosed: Yes
Contiguous: Yes
Permitted: Yes
Wet space: No
Addition: No
Conversion: No

8 Floor 1 - Dining Area

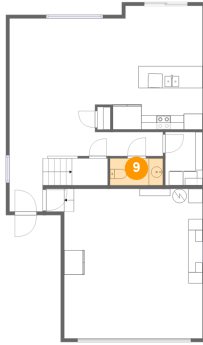


Dimensions: 12'7" x 8'5"
Area: 104 sq. ft
Counted as living area: Yes

Heated: Yes
Finished: Yes
Enclosed: Yes
Contiguous: Yes
Permitted: Yes
Wet space: No
Addition: No
Conversion: No

1023 Brandi Way, Central Point, Oregon 97502, United States

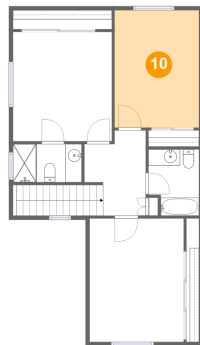
9 Floor 1 - WC



Dimensions: 7'5" x 3'9"
Area: 28 sq. ft
Counted as living area: Yes

Heated: Yes
Finished: Yes
Enclosed: Yes
Contiguous: Yes
Permitted: Yes
Wet space: Yes
Addition: No
Conversion: No

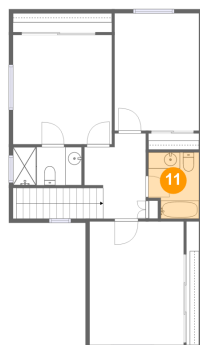
10 Floor 2 - Bedroom



Dimensions: 10'4" x 14'5"
Area: 149 sq. ft
Counted as living area: Yes

Heated: Yes
Finished: Yes
Enclosed: Yes
Contiguous: Yes
Permitted: Yes
Wet space: No
Addition: No
Conversion: No

11 Floor 2 - Bath

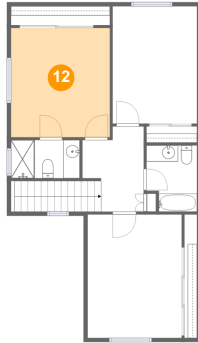


Dimensions: 6'2" x 8'2"
Area: 47 sq. ft
Counted as living area: Yes

Heated: Yes
Finished: Yes
Enclosed: Yes
Contiguous: Yes
Permitted: Yes
Wet space: Yes
Addition: No
Conversion: No

1023 Brandi Way, Central Point, Oregon 97502, United States

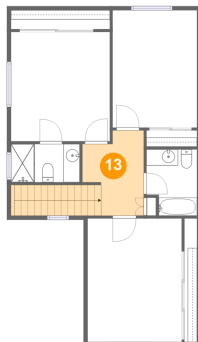
12 Floor 2 - Primary Bedroom



Dimensions: 12'1" x 13'5"
Area: 163 sq. ft
Counted as living area: Yes

Heated: Yes
Finished: Yes
Enclosed: Yes
Contiguous: Yes
Permitted: Yes
Wet space: No
Addition: No
Conversion: No

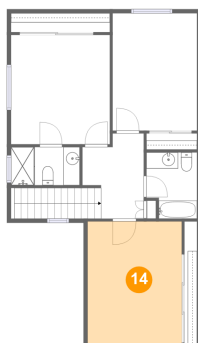
13 Floor 2 - Hall



Dimensions: 7'6" x 10'6"
Area: 105 sq. ft
Counted as living area: Yes

Heated: Yes
Finished: Yes
Enclosed: Yes
Contiguous: Yes
Permitted: Yes
Wet space: No
Addition: No
Conversion: No

14 Floor 2 - Bedroom

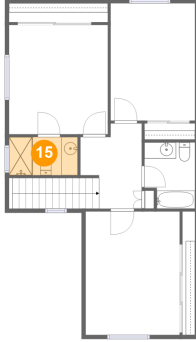


Dimensions: 11'6" x 15'2"
Area: 175 sq. ft
Counted as living area: Yes

Heated: Yes
Finished: Yes
Enclosed: Yes
Contiguous: Yes
Permitted: Yes
Wet space: No
Addition: No
Conversion: No

1023 Brandi Way, Central Point, Oregon 97502, United States

15 Floor 2 - Bath



Dimensions: 8'5" x 4'8"
Area: 40 sq. ft
Counted as living area: Yes

Heated: Yes
Finished: Yes
Enclosed: Yes
Contiguous: Yes
Permitted: Yes
Wet space: Yes
Addition: No
Conversion: No