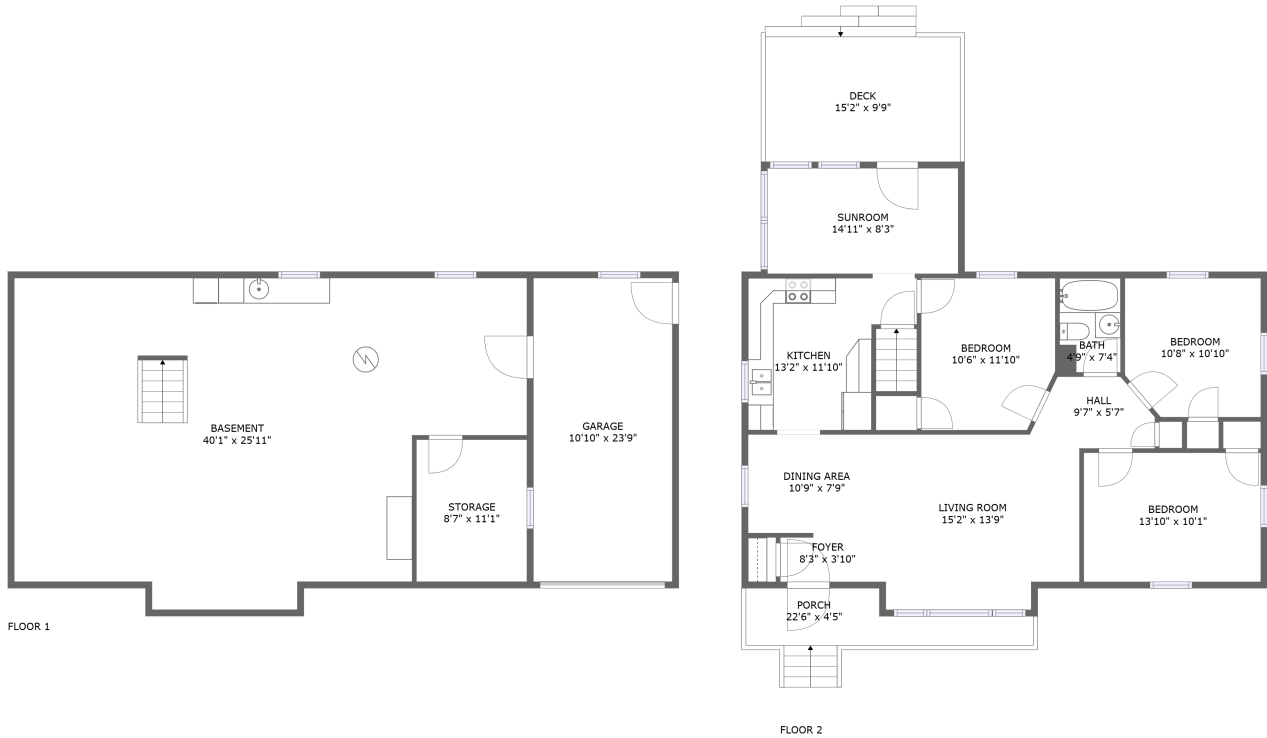


Home report

3028 Fleetwood Avenue Southwest, Roanoke, Virginia 24015,
United States



Total Area: 1105 sq. ft

Below Ground: 0 sq. ft, Floor 2: 1105 sq. ft

Excluded: Basement 881 sq. ft, Garage 258 sq. ft, Storage 96 sq. ft, Deck 149 sq. ft, Porch 88 sq. ft, Walls: 166 sq. ft

Property summary



2 Floors



3 Bedrooms



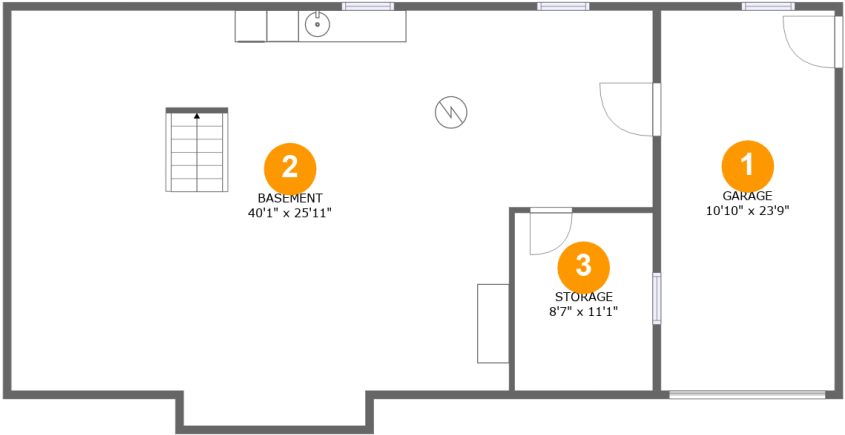
1 Bathrooms



1 Garages

Home report

3028 Fleetwood Avenue Southwest, Roanoke, Virginia 24015, United States



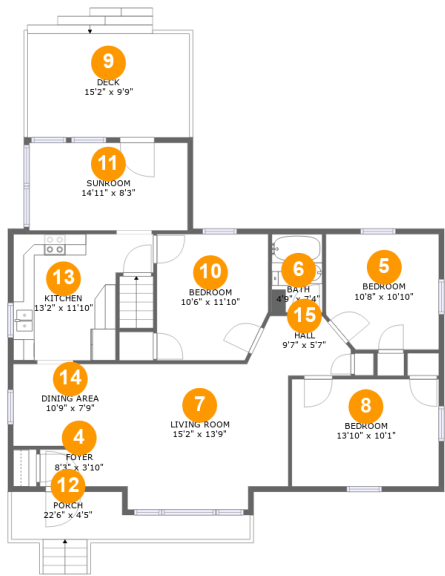
Room dimensions

Floor 1 Below ground Total:0sqft Excluded: 1235sqft

#		Max Dimensions	sqft	Included
1	Garage	10'10" x 23'9"	258 sq. ft	No
2	Basement	40'1" x 25'11"	874 sq. ft	No
3	Storage	8'7" x 11'1"	96 sq. ft	No

Home report

3028 Fleetwood Avenue Southwest, Roanoke, Virginia 24015, United States



Room dimensions

Floor 2 Total:1105sqft Excluded: 237sqft

#		Max Dimensions	sqft	Included
4	Foyer	8'3" x 3'10"	31 sq. ft	Yes
5	Bedroom	10'8" x 10'10"	111 sq. ft	Yes
6	Bath	4'9" x 7'4"	35 sq. ft	Yes
7	Living Room	15'2" x 13'9"	199 sq. ft	Yes
8	Bedroom	13'10" x 10'1"	140 sq. ft	Yes
9	Deck	15'2" x 9'9"	149 sq. ft	No
10	Bedroom	10'6" x 11'10"	120 sq. ft	Yes
11	Sunroom	14'11" x 8'3"	123 sq. ft	Yes
12	Porch	22'6" x 4'5"	88 sq. ft	No
13	Kitchen	13'2" x 11'10"	128 sq. ft	Yes
14	Dining Area	10'9" x 7'9"	83 sq. ft	Yes

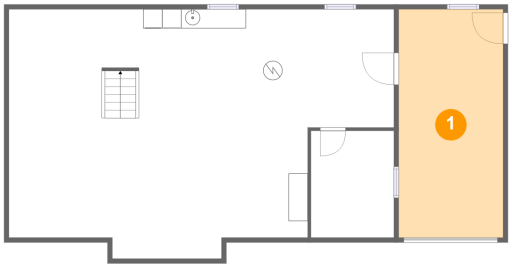
Home report

3028 Fleetwood Avenue Southwest, Roanoke, Virginia 24015,
United States

#		Max Dimensions	sqft	Included
15	Hall	9'7" x 5'7"	42 sq. ft	Yes

3028 Fleetwood Avenue Southwest, Roanoke, Virginia 24015,
United States

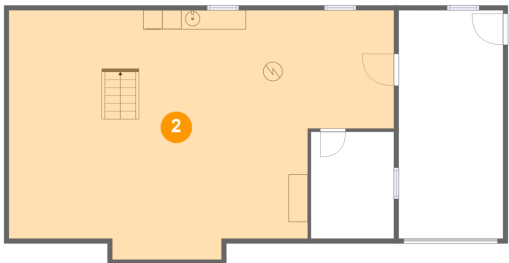
1 Floor 1 - Garage



Max Dimensions: 10'10" x 23'9"
Calculated Area: 258 sq. ft
Included: No

Heated: No
Finished: No
Enclosed: Yes
Contiguous: Yes
Permitted: Yes
Wet space: No
Addition: No
Conversion: No

2 Floor 1 - Basement



Max Dimensions: 40'1" x 25'11"
Calculated Area: 874 sq. ft
Included: No

Heated: Yes
Finished: No
Enclosed: Yes
Contiguous: Yes
Permitted: Yes
Wet space: No
Addition: No
Conversion: No

3028 Fleetwood Avenue Southwest, Roanoke, Virginia 24015,
United States

3 Floor 1 - Storage



Max Dimensions: 8'7" x 11'1"
Calculated Area: 96 sq. ft
Included: No

Heated: No
Finished: No
Enclosed: No
Contiguous: Yes
Permitted: Yes
Wet space: No
Addition: No
Conversion: No

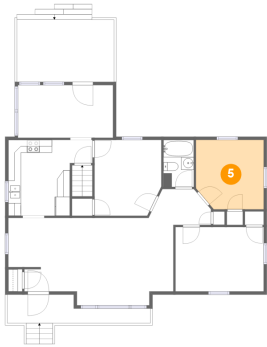
4 Floor 2 - Foyer



Max Dimensions: 8'3" x 3'10"
Calculated Area: 31 sq. ft
Included: Yes

Heated: Yes
Finished: Yes
Enclosed: Yes
Contiguous: Yes
Permitted: Yes
Wet space: No
Addition: No
Conversion: No

5 Floor 2 - Bedroom



Max Dimensions: 10'8" x 10'10"
Calculated Area: 111 sq. ft
Included: Yes

Heated: Yes
Finished: Yes
Enclosed: Yes
Contiguous: Yes
Permitted: Yes
Wet space: No
Addition: No
Conversion: No

3028 Fleetwood Avenue Southwest, Roanoke, Virginia 24015,
United States

6 Floor 2 - Bath



Max Dimensions: 4'9" x 7'4"
Calculated Area: 35 sq. ft
Included: Yes

Heated: Yes
Finished: Yes
Enclosed: Yes
Contiguous: Yes
Permitted: Yes
Wet space: Yes
Addition: No
Conversion: No

7 Floor 2 - Living Room



Max Dimensions: 15'2" x 13'9"
Calculated Area: 199 sq. ft
Included: Yes

Heated: Yes
Finished: Yes
Enclosed: Yes
Contiguous: Yes
Permitted: Yes
Wet space: No
Addition: No
Conversion: No

8 Floor 2 - Bedroom



Max Dimensions: 13'10" x 10'1"
Calculated Area: 140 sq. ft
Included: Yes

Heated: Yes
Finished: Yes
Enclosed: Yes
Contiguous: Yes
Permitted: Yes
Wet space: No
Addition: No
Conversion: No

3028 Fleetwood Avenue Southwest, Roanoke, Virginia 24015,
United States

9 Floor 2 - Deck



Max Dimensions: 15'2" x 9'9"
Calculated Area: 149 sq. ft
Included: No

Heated: No
Finished: Yes
Enclosed: No
Contiguous: Yes
Permitted: Yes
Wet space: No
Addition: No
Conversion: No

10 Floor 2 - Bedroom



Max Dimensions: 10'6" x 11'10"
Calculated Area: 120 sq. ft
Included: Yes

Heated: Yes
Finished: Yes
Enclosed: Yes
Contiguous: Yes
Permitted: Yes
Wet space: No
Addition: No
Conversion: No

11 Floor 2 - Sunroom



Max Dimensions: 14'11" x 8'3"
Calculated Area: 123 sq. ft
Included: Yes

Heated: Yes
Finished: Yes
Enclosed: Yes
Contiguous: Yes
Permitted: Yes
Wet space: No
Addition: No
Conversion: No

3028 Fleetwood Avenue Southwest, Roanoke, Virginia 24015,
United States

12 Floor 2 - Porch



Max Dimensions: 22'6" x 4'5"
Calculated Area: 88 sq. ft
Included: No

Heated: No
Finished: Yes
Enclosed: No
Contiguous: Yes
Permitted: Yes
Wet space: No
Addition: No
Conversion: No

13 Floor 2 - Kitchen



Max Dimensions: 13'2" x 11'10"
Calculated Area: 128 sq. ft
Included: Yes

Heated: Yes
Finished: Yes
Enclosed: Yes
Contiguous: Yes
Permitted: Yes
Wet space: No
Addition: No
Conversion: No

14 Floor 2 - Dining Area



Max Dimensions: 10'9" x 7'9"
Calculated Area: 83 sq. ft
Included: Yes

Heated: Yes
Finished: Yes
Enclosed: Yes
Contiguous: Yes
Permitted: Yes
Wet space: No
Addition: No
Conversion: No

Home report

3028 Fleetwood Avenue Southwest, Roanoke, Virginia 24015,
United States

15 Floor 2 - Hall



Max Dimensions: 9'7" x 5'7"
Calculated Area: 42 sq. ft
Included: Yes

Heated: Yes
Finished: Yes
Enclosed: Yes
Contiguous: Yes
Permitted: Yes
Wet space: No
Addition: No
Conversion: No