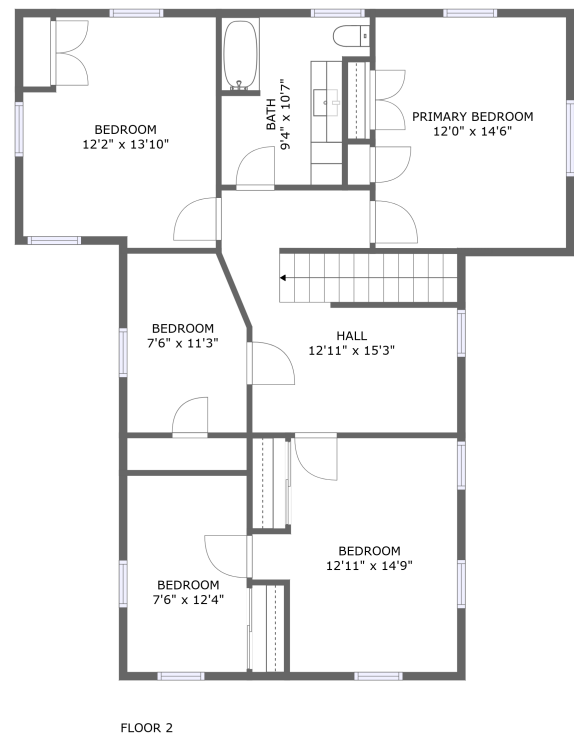
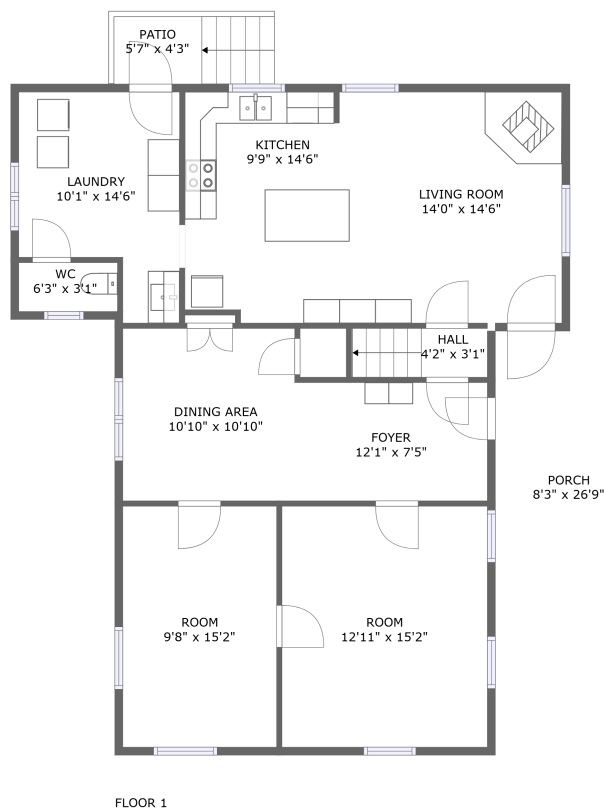






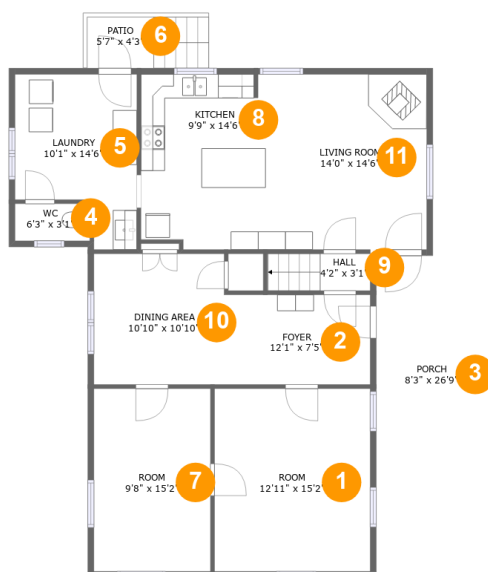
57 E Rosebud Rd,Myerstown,PA,US



Property Summary

 **0** garages  **5** bedrooms  **1** bathrooms  **0** half baths

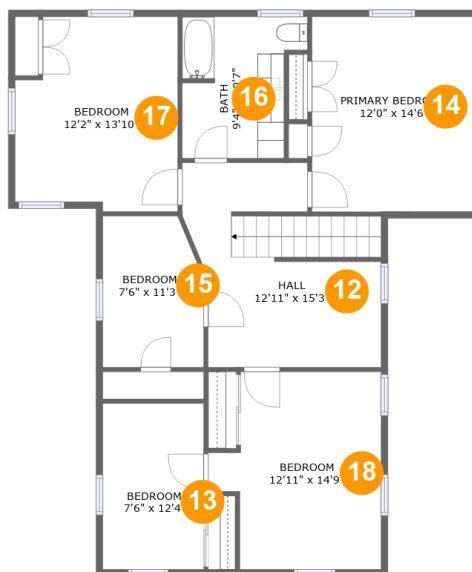
 **2** floors  **2,301** Gross Living Area sqft  **2,547** total sqft

57 E Rosebud Rd, Myerstown, PA, US**Room Dimensions****Floor 1****Total sqft: 1425****Living area: 1179**

#	Room name	Dimensions	Area (sqft)	Counted as Living Area
1	Room	12'11" x 15'2"	196 sq. ft	Yes
2	Foyer	12'1" x 7'5"	90 sq. ft	Yes
3	Porch	8'3" x 26'9"	222 sq. ft	No
4	Wc	6'3" x 3'1"	19 sq. ft	Yes
5	Laundry	10'1" x 14'6"	120 sq. ft	Yes
6	Patio	5'7" x 4'3"	24 sq. ft	No
7	Room	9'8" x 15'2"	147 sq. ft	Yes
8	Kitchen	9'9" x 14'6"	138 sq. ft	Yes
9	Hall	4'2" x 3'1"	26 sq. ft	Yes
10	Dining Area	10'10" x 10'10"	117 sq. ft	Yes
11	Living Room	14'0" x 14'6"	203 sq. ft	Yes

Scan captured on Tue, 29 Oct 2024 20:05:50 GMT

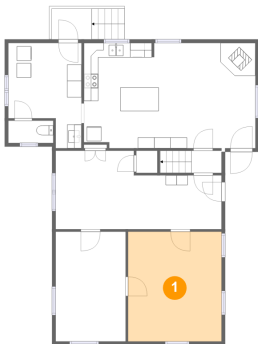
Information is calculated by CubiCasa technology; deemed highly reliable but not guaranteed.

57 E Rosebud Rd, Myerstown, PA, US**Room Dimensions****Floor 2****Total sqft: 1122****Living area: 1122**

#	Room name	Dimensions	Area (sqft)	Counted as Living Area
12	Hall	12'11" x 15'3"	182 sq. ft	Yes
13	Bedroom	7'6" x 12'4"	93 sq. ft	Yes
14	Primary Bedroom	12'0" x 14'6"	175 sq. ft	Yes
15	Bedroom	7'6" x 11'3"	80 sq. ft	Yes
16	Bath	9'4" x 10'7"	84 sq. ft	Yes
17	Bedroom	12'2" x 13'10"	162 sq. ft	Yes
18	Bedroom	12'11" x 14'9"	162 sq. ft	Yes

57 E Rosebud Rd,Myerstown,PA,US

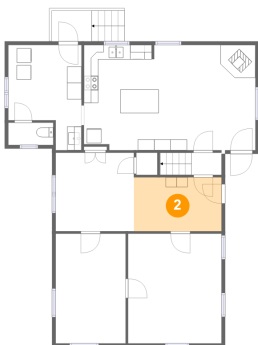
1 Floor 1 - Room



Dimensions: 12'11" x 15'2"
Area: 196 sq. ft
Counted as Living Area:
Yes

Heated: Yes
Finished: Yes
Enclosed: Yes
Contiguous:
Yes
Permitted: Yes
Wet Space: No
Addition: No
Conversion: No

2 Floor 1 - Foyer



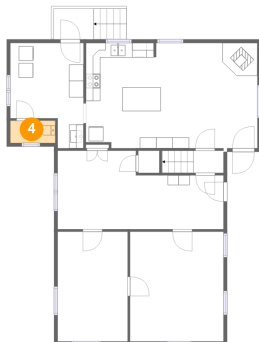
Dimensions: 12'1" x 7'5"
Area: 90 sq. ft
Counted as Living Area:
Yes

Heated: Yes
Finished: Yes
Enclosed: Yes
Contiguous:
Yes
Permitted: Yes
Wet Space: No
Addition: No
Conversion: No

57 E Rosebud Rd, Myerstown, PA, US**3 Floor 1 - Porch**

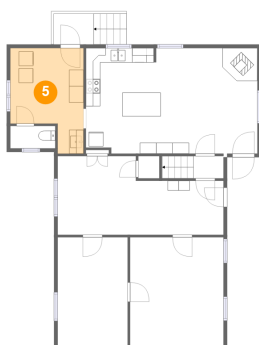
Dimensions: 8'3" x 26'9"
Area: 222 sq. ft
Counted as Living Area: No

Heated: No
Finished: Yes
Enclosed: No
Contiguous: Yes
Permitted: Yes
Wet Space: No
Addition: No
Conversion: No

4 Floor 1 - Wc

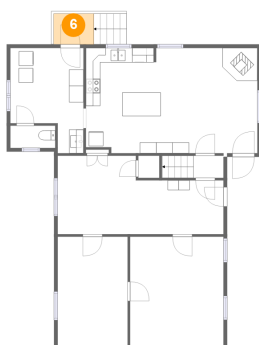
Dimensions: 6'3" x 3'1"
Area: 19 sq. ft
Counted as Living Area: Yes

Heated: Yes
Finished: Yes
Enclosed: Yes
Contiguous: Yes
Permitted: Yes
Wet Space: Yes
Addition: No
Conversion: No

5 Floor 1 - Laundry

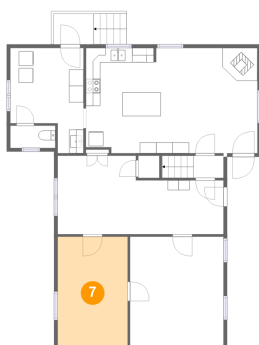
Dimensions: 10'1" x 14'6"
Area: 120 sq. ft
Counted as Living Area: Yes

Heated: Yes
Finished: Yes
Enclosed: Yes
Contiguous: Yes
Permitted: Yes
Wet Space: No
Addition: No
Conversion: No

57 E Rosebud Rd, Myerstown, PA, US**6 Floor 1 - Patio**

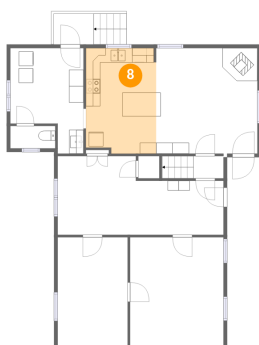
Dimensions: 5'7" x 4'3"
Area: 24 sq. ft
Counted as Living Area: No

Heated: No
Finished: Yes
Enclosed: No
Contiguous: Yes
Permitted: Yes
Wet Space: No
Addition: No
Conversion: No

7 Floor 1 - Room

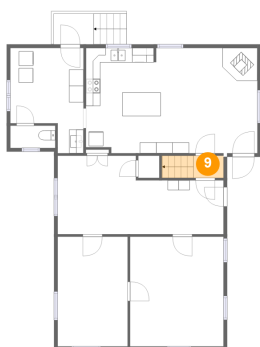
Dimensions: 9'8" x 15'2"
Area: 147 sq. ft
Counted as Living Area: Yes

Heated: Yes
Finished: Yes
Enclosed: Yes
Contiguous: Yes
Permitted: Yes
Wet Space: No
Addition: No
Conversion: No

8 Floor 1 - Kitchen

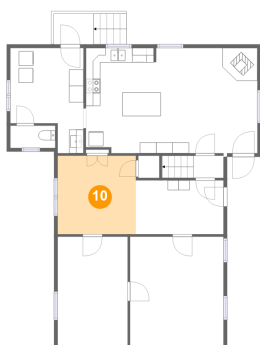
Dimensions: 9'9" x 14'6"
Area: 138 sq. ft
Counted as Living Area: Yes

Heated: Yes
Finished: Yes
Enclosed: Yes
Contiguous: Yes
Permitted: Yes
Wet Space: No
Addition: No
Conversion: No

57 E Rosebud Rd, Myerstown, PA, US**9 Floor 1 - Hall**

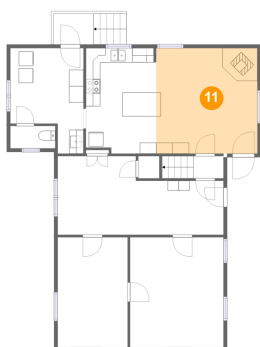
Dimensions: 4'2" x 3'1"
Area: 26 sq. ft
Counted as Living Area:
Yes

Heated: Yes
Finished: Yes
Enclosed: Yes
Contiguous:
Yes
Permitted: Yes
Wet Space: No
Addition: No
Conversion: No

10 Floor 1 - Dining Area

Dimensions: 10'10" x 10'10"
Area: 117 sq. ft
Counted as Living Area:
Yes

Heated: Yes
Finished: Yes
Enclosed: Yes
Contiguous:
Yes
Permitted: Yes
Wet Space: No
Addition: No
Conversion: No

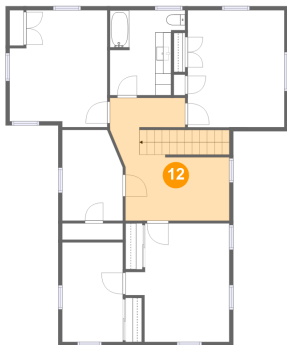
11 Floor 1 - Living Room

Dimensions: 14'0" x 14'6"
Area: 203 sq. ft
Counted as Living Area:
Yes

Heated: Yes
Finished: Yes
Enclosed: Yes
Contiguous:
Yes
Permitted: Yes
Wet Space: No
Addition: No
Conversion: No

57 E Rosebud Rd,Myerstown,PA,US

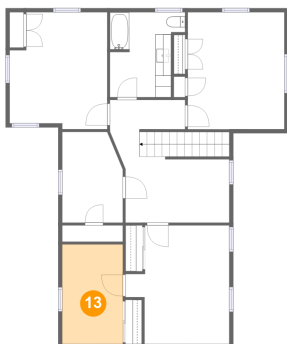
12 Floor 2 - Hall



Dimensions: 12'11" x 15'3"
Area: 182 sq. ft
Counted as Living Area:
Yes

Heated: Yes
Finished: Yes
Enclosed: Yes
Contiguous:
Yes
Permitted: Yes
Wet Space: No
Addition: No
Conversion: No

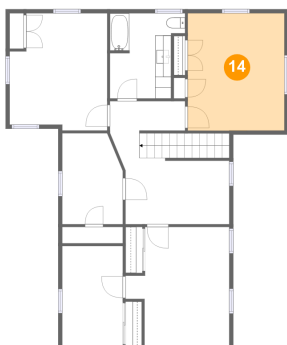
13 Floor 2 - Bedroom



Dimensions: 7'6" x 12'4"
Area: 93 sq. ft
Counted as Living Area:
Yes

Heated: Yes
Finished: Yes
Enclosed: Yes
Contiguous:
Yes
Permitted: Yes
Wet Space: No
Addition: No
Conversion: No

14 Floor 2 - Primary Bedroom

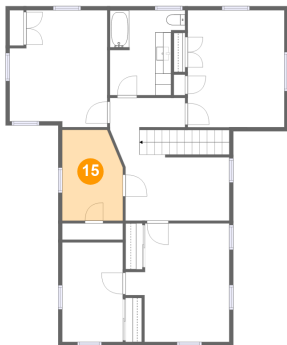


Dimensions: 12'0" x 14'6"
Area: 175 sq. ft
Counted as Living Area:
Yes

Heated: Yes
Finished: Yes
Enclosed: Yes
Contiguous:
Yes
Permitted: Yes
Wet Space: No
Addition: No
Conversion: No

57 E Rosebud Rd,Myerstown,PA,US

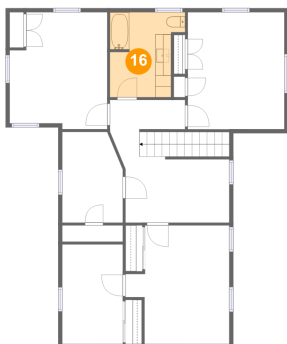
15 Floor 2 - Bedroom



Dimensions: 7'6" x 11'3"
Area: 80 sq. ft
Counted as Living Area:
Yes

Heated: Yes
Finished: Yes
Enclosed: Yes
Contiguous:
Yes
Permitted: Yes
Wet Space: No
Addition: No
Conversion: No

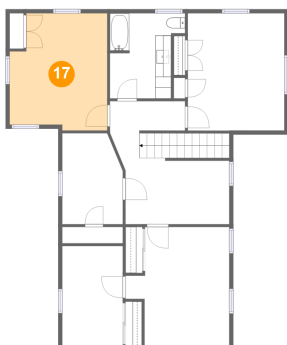
16 Floor 2 - Bath



Dimensions: 9'4" x 10'7"
Area: 84 sq. ft
Counted as Living Area:
Yes

Heated: Yes
Finished: Yes
Enclosed: Yes
Contiguous:
Yes
Permitted: Yes
Wet Space: Yes
Addition: No
Conversion: No

17 Floor 2 - Bedroom

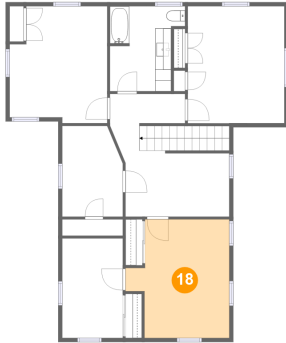


Dimensions: 12'2" x 13'10"
Area: 162 sq. ft
Counted as Living Area:
Yes

Heated: Yes
Finished: Yes
Enclosed: Yes
Contiguous:
Yes
Permitted: Yes
Wet Space: No
Addition: No
Conversion: No

57 E Rosebud Rd,Myerstown,PA,US

18 Floor 2 - Bedroom



Dimensions: 12'11" x 14'9"
Area: 162 sq. ft
Counted as Living Area:
Yes

Heated: Yes
Finished: Yes
Enclosed: Yes
Contiguous:
Yes
Permitted: Yes
Wet Space: No
Addition: No
Conversion: No