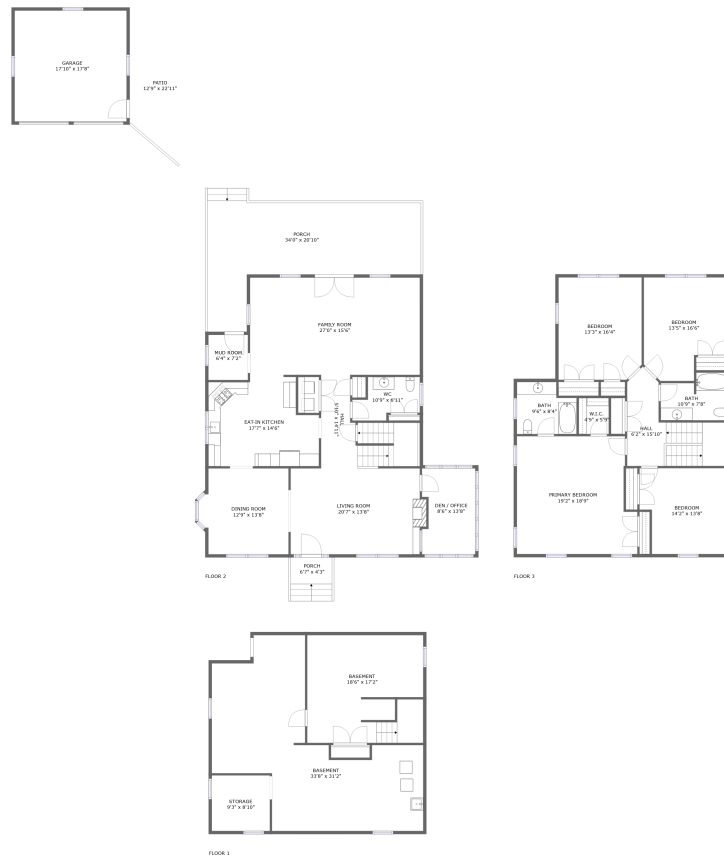



260 Van Houten Avenue, Wyckoff, Bergen County, New Jersey, United States, 07481



Property summary

 **1** Garages

 **4** Bedrooms

 **2** Bathrooms

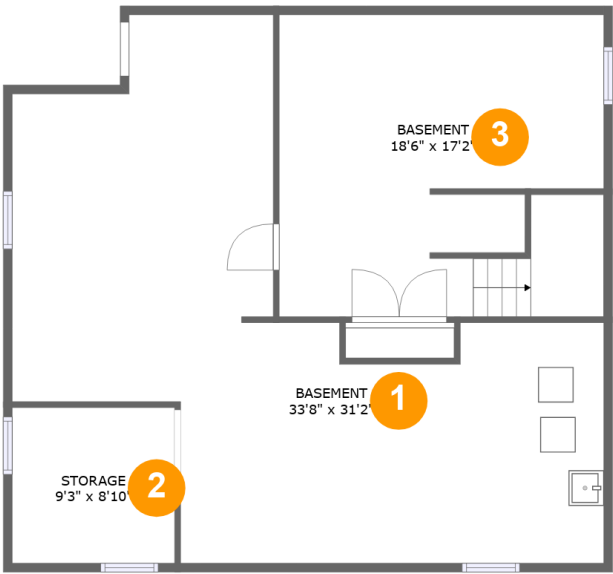
 **1** Half baths

 **3** Floors

 **3,082**
Gross living
area sqft

 **5,347**
Total sqft

260 Van Houten Avenue, Wyckoff, Bergen County,
New Jersey, United States, 07481

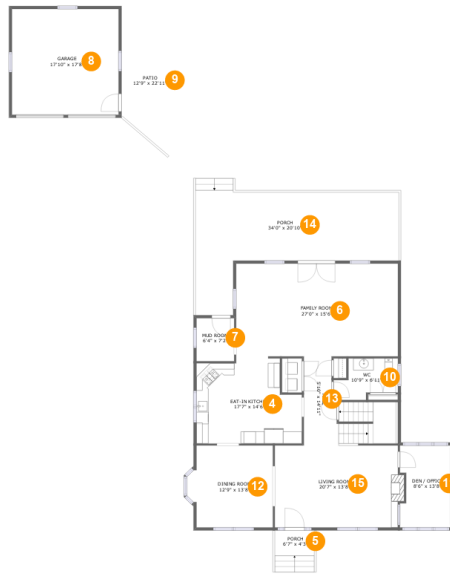


Room dimensions

Floor 1 Total sqft: 1085 Living area: 0

#		Dimensions	sqft	Counted as living area
1	Basement	33'8" x 31'2"	576 sq. ft	No
2	Storage	9'3" x 8'10"	82 sq. ft	No
3	Basement	18'6" x 17'2"	311 sq. ft	No

**260 Van Houten Avenue, Wyckoff, Bergen County,
New Jersey, United States, 07481**



Room dimensions

Floor 2

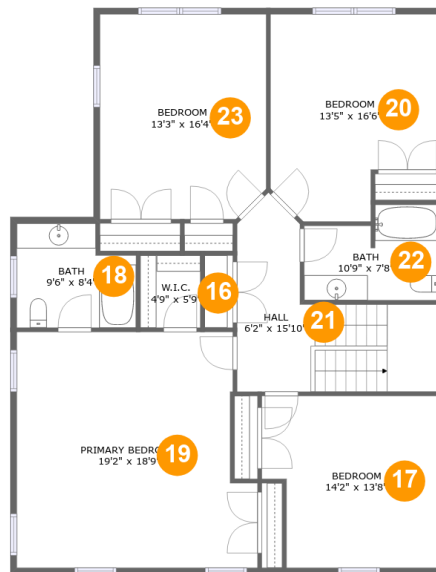
Total sqft: 2811 Living area: 1631

#		Dimensions	sqft	Counted as living area
4	Kitchen	17'7" x 14'6"	225 sq. ft	Yes
5	Outdoor	6'7" x 4'3"	50 sq. ft	No
6	Living Room	27'0" x 15'6"	419 sq. ft	Yes
7	Mud Room	6'4" x 7'2"	45 sq. ft	Yes
8	Garage	17'10" x 17'8"	315 sq. ft	No
9	Outdoor	12'9" x 22'11"	304 sq. ft	No
10	Bath	10'9" x 6'11"	59 sq. ft	Yes
11	Den / Office	8'6" x 13'8"	111 sq. ft	Yes
12	Dining Room	12'9" x 13'8"	175 sq. ft	Yes
13	Hall	5'10" x 14'11"	144 sq. ft	Yes
14	Outdoor	34'0" x 20'10"	467 sq. ft	No

260 Van Houten Avenue, Wyckoff, Bergen County,
New Jersey, United States, 07481

#		Dimensions	sqft	Counted as living area
15	Living Room	20'7" x 13'8"	286 sq. ft	Yes

**260 Van Houten Avenue, Wyckoff, Bergen County,
New Jersey, United States, 07481**



Room dimensions

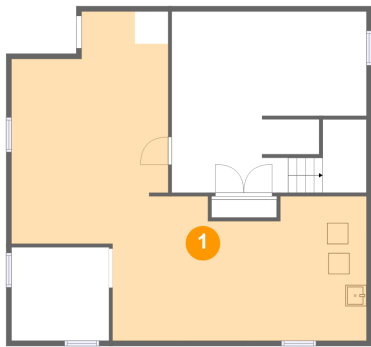
Floor 3

Total sqft: 1451 Living area: 1451

#		Dimensions	sqft	Counted as living area
16	Cl	4'9" x 5'9"	28 sq. ft	Yes
17	Bedroom	14'2" x 13'8"	180 sq. ft	Yes
18	Bath	9'6" x 8'4"	71 sq. ft	Yes
19	Bedroom	19'2" x 18'9"	335 sq. ft	Yes
20	Bedroom	13'5" x 16'6"	196 sq. ft	Yes
21	Hall	6'2" x 15'10"	150 sq. ft	Yes
22	Bath	10'9" x 7'8"	72 sq. ft	Yes
23	Bedroom	13'3" x 16'4"	213 sq. ft	Yes

260 Van Houten Avenue, Wyckoff, Bergen County,
New Jersey, United States, 07481

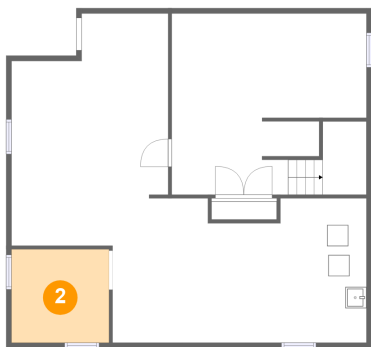
1 Floor 1 - Basement



Dimensions: 33'8" x 31'2"
Area: 576 sq. ft
Counted as living area: No

Heated: Yes
Finished: No
Enclosed: Yes
Contiguous: Yes
Permitted: Yes
Wet space: No
Addition: No
Conversion: No

2 Floor 1 - Storage

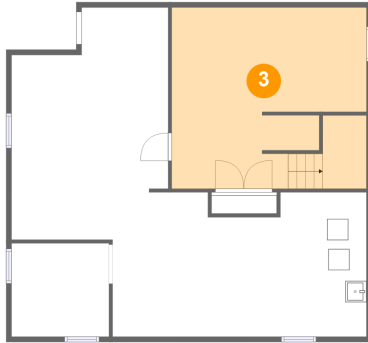


Dimensions: 9'3" x 8'10"
Area: 82 sq. ft
Counted as living area: No

Heated: No
Finished: No
Enclosed: No
Contiguous: Yes
Permitted: Yes
Wet space: No
Addition: No
Conversion: No

260 Van Houten Avenue, Wyckoff, Bergen County,
New Jersey, United States, 07481

3 Floor 1 - Basement



Dimensions: 18'6" x 17'2"
Area: 311 sq. ft
Counted as living area: No

Heated: Yes
Finished: No
Enclosed: Yes
Contiguous: Yes
Permitted: Yes
Wet space: No
Addition: No
Conversion: No

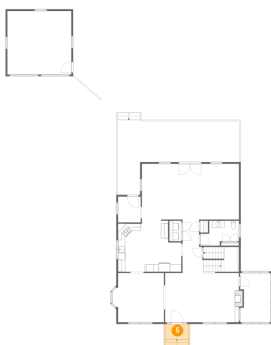
4 Floor 2 - Kitchen



Dimensions: 17'7" x 14'6"
Area: 225 sq. ft
Counted as living area: Yes

Heated: Yes
Finished: Yes
Enclosed: Yes
Contiguous: Yes
Permitted: Yes
Wet space: No
Addition: No
Conversion: No

5 Floor 2 - Outdoor

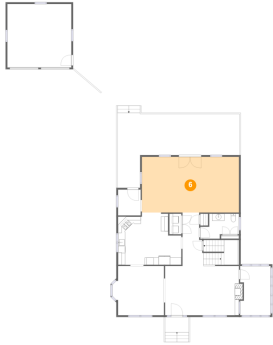


Dimensions: 6'7" x 4'3"
Area: 50 sq. ft
Counted as living area: No

Heated: No
Finished: Yes
Enclosed: No
Contiguous: Yes
Permitted: Yes
Wet space: No
Addition: No
Conversion: No

260 Van Houten Avenue, Wyckoff, Bergen County,
New Jersey, United States, 07481

6 Floor 2 - Living Room



Dimensions: 27'0" x 15'6"
Area: 419 sq. ft
Counted as living area: Yes

Heated: Yes
Finished: Yes
Enclosed: Yes
Contiguous: Yes
Permitted: Yes
Wet space: No
Addition: No
Conversion: No

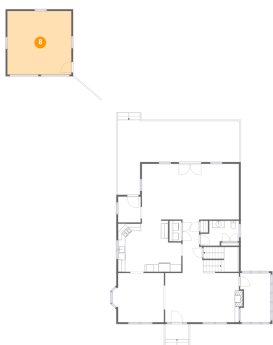
7 Floor 2 - Mud Room



Dimensions: 6'4" x 7'2"
Area: 45 sq. ft
Counted as living area: Yes

Heated: Yes
Finished: Yes
Enclosed: Yes
Contiguous: Yes
Permitted: Yes
Wet space: No
Addition: No
Conversion: No

8 Floor 2 - Garage

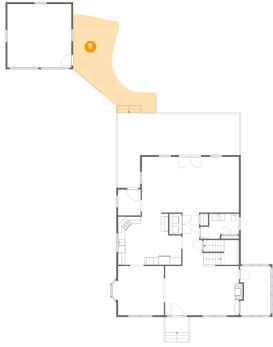


Dimensions: 17'10" x 17'8"
Area: 315 sq. ft
Counted as living area: No

Heated: No
Finished: No
Enclosed: Yes
Contiguous: Yes
Permitted: Yes
Wet space: No
Addition: No
Conversion: No

260 Van Houten Avenue, Wyckoff, Bergen County,
New Jersey, United States, 07481

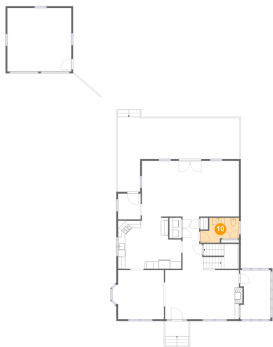
9 Floor 2 - Outdoor



Dimensions: 12'9" x 22'11"
Area: 304 sq. ft
Counted as living area: No

Heated: No
Finished: Yes
Enclosed: No
Contiguous: Yes
Permitted: Yes
Wet space: No
Addition: No
Conversion: No

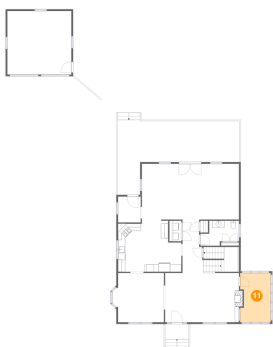
10 Floor 2 - Bath



Dimensions: 10'9" x 6'11"
Area: 59 sq. ft
Counted as living area: Yes

Heated: Yes
Finished: Yes
Enclosed: Yes
Contiguous: Yes
Permitted: Yes
Wet space: Yes
Addition: No
Conversion: No

11 Floor 2 - Den / Office

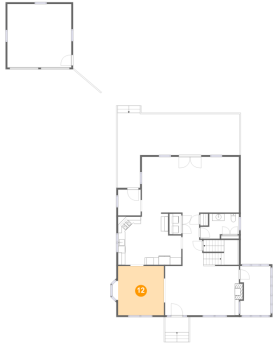


Dimensions: 8'6" x 13'8"
Area: 111 sq. ft
Counted as living area: Yes

Heated: Yes
Finished: Yes
Enclosed: Yes
Contiguous: Yes
Permitted: Yes
Wet space: No
Addition: No
Conversion: No

**260 Van Houten Avenue, Wyckoff, Bergen County,
New Jersey, United States, 07481**

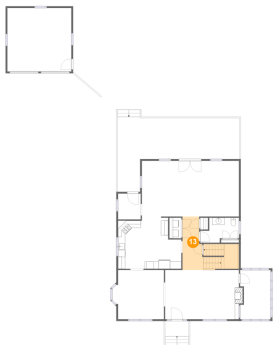
12 Floor 2 - Dining Room



Dimensions: 12'9" x 13'8"
Area: 175 sq. ft
Counted as living area: Yes

Heated: Yes
Finished: Yes
Enclosed: Yes
Contiguous: Yes
Permitted: Yes
Wet space: No
Addition: No
Conversion: No

13 Floor 2 - Hall



Dimensions: 5'10" x 14'11"
Area: 144 sq. ft
Counted as living area: Yes

Heated: Yes
Finished: Yes
Enclosed: Yes
Contiguous: Yes
Permitted: Yes
Wet space: No
Addition: No
Conversion: No

14 Floor 2 - Outdoor

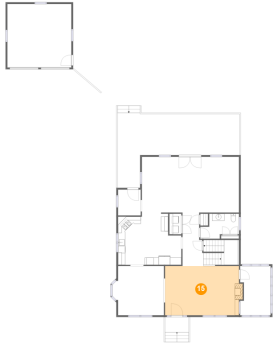


Dimensions: 34'0" x 20'10"
Area: 467 sq. ft
Counted as living area: No

Heated: No
Finished: Yes
Enclosed: No
Contiguous: No
Permitted: Yes
Wet space: No
Addition: No
Conversion: No

260 Van Houten Avenue, Wyckoff, Bergen County,
New Jersey, United States, 07481

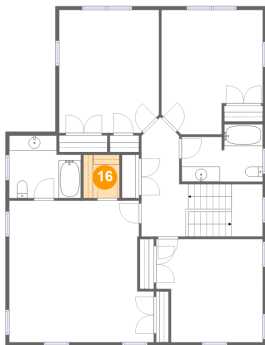
15 Floor 2 - Living Room



Dimensions: 20'7" x 13'8"
Area: 286 sq. ft
Counted as living area: Yes

Heated: Yes
Finished: Yes
Enclosed: Yes
Contiguous: Yes
Permitted: Yes
Wet space: No
Addition: No
Conversion: No

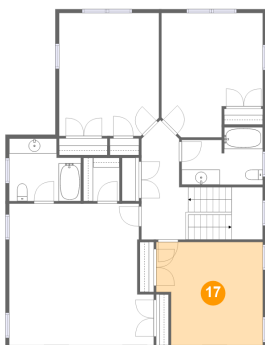
16 Floor 3 - Cl



Dimensions: 4'9" x 5'9"
Area: 28 sq. ft
Counted as living area: Yes

Heated: Yes
Finished: Yes
Enclosed: Yes
Contiguous: Yes
Permitted: Yes
Wet space: No
Addition: No
Conversion: No

17 Floor 3 - Bedroom

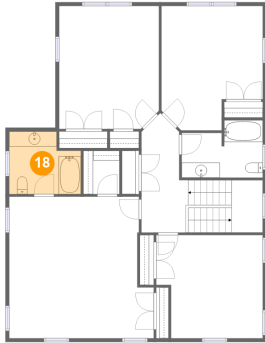


Dimensions: 14'2" x 13'8"
Area: 180 sq. ft
Counted as living area: Yes

Heated: Yes
Finished: Yes
Enclosed: Yes
Contiguous: Yes
Permitted: Yes
Wet space: No
Addition: No
Conversion: No

260 Van Houten Avenue, Wyckoff, Bergen County,
New Jersey, United States, 07481

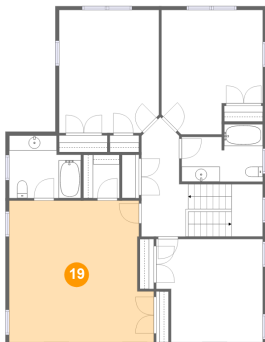
18 Floor 3 - Bath



Dimensions: 9'6" x 8'4"
Area: 71 sq. ft
Counted as living area: Yes

Heated: Yes
Finished: Yes
Enclosed: Yes
Contiguous: Yes
Permitted: Yes
Wet space: Yes
Addition: No
Conversion: No

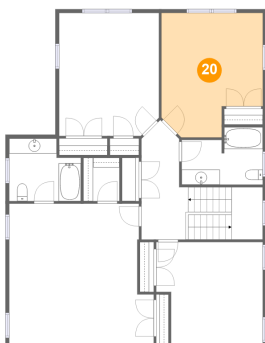
19 Floor 3 - Bedroom



Dimensions: 19'2" x 18'9"
Area: 335 sq. ft
Counted as living area: Yes

Heated: Yes
Finished: Yes
Enclosed: Yes
Contiguous: Yes
Permitted: Yes
Wet space: No
Addition: No
Conversion: No

20 Floor 3 - Bedroom

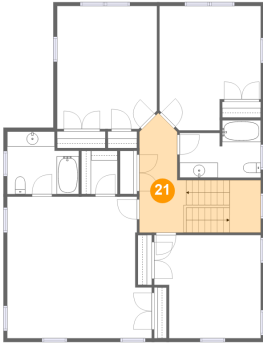


Dimensions: 13'5" x 16'6"
Area: 196 sq. ft
Counted as living area: Yes

Heated: Yes
Finished: Yes
Enclosed: Yes
Contiguous: Yes
Permitted: Yes
Wet space: No
Addition: No
Conversion: No

**260 Van Houten Avenue, Wyckoff, Bergen County,
New Jersey, United States, 07481**

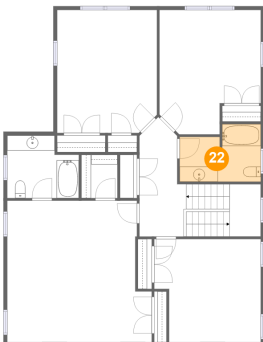
21 Floor 3 - Hall



Dimensions: 6'2" x 15'10"
Area: 150 sq. ft
Counted as living area: Yes

Heated: Yes
Finished: Yes
Enclosed: Yes
Contiguous: Yes
Permitted: Yes
Wet space: No
Addition: No
Conversion: No

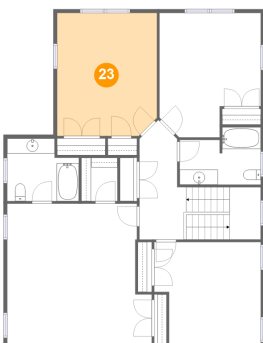
22 Floor 3 - Bath



Dimensions: 10'9" x 7'8"
Area: 72 sq. ft
Counted as living area: Yes

Heated: Yes
Finished: Yes
Enclosed: Yes
Contiguous: Yes
Permitted: Yes
Wet space: Yes
Addition: No
Conversion: No

23 Floor 3 - Bedroom



Dimensions: 13'3" x 16'4"
Area: 213 sq. ft
Counted as living area: Yes

Heated: Yes
Finished: Yes
Enclosed: Yes
Contiguous: Yes
Permitted: Yes
Wet space: No
Addition: No
Conversion: No