

Home report

7777 Apple Grove Lane, Roanoke, Roanoke County, Virginia,
United States, 24018




Total Area: 2548 sq. ft

Below Ground: 0 sq. ft, Floor 2: 1274 sq. ft, Floor 3: 1274 sq. ft

Excluded: Basement 1274 sq. ft, Fireplace 38 sq. ft, Outdoor Porch 422 sq. ft, Outdoor
Patio 391 sq. ft

Property summary

 **3** Floors

 **3** Bedrooms

 **3** Bathrooms

 **1** Half baths

Home report

7777 Apple Grove Lane, Roanoke, Roanoke County, Virginia,
United States, 24018



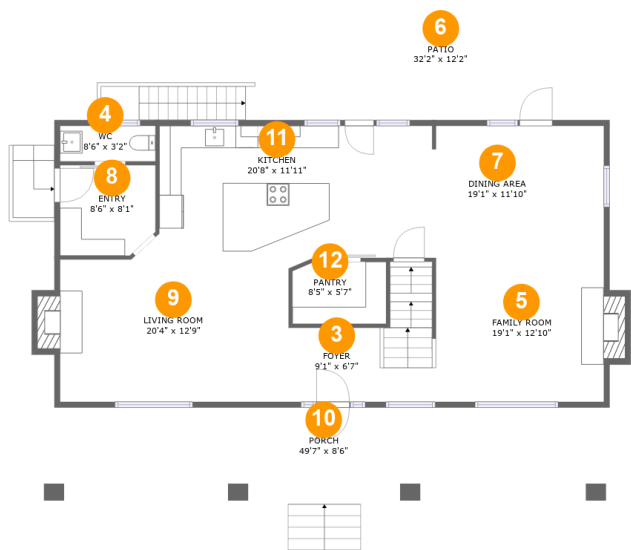
Room dimensions

Floor 1 Below ground Total:0sqft Excluded: 1287sqft

#		Max Dimensions	sqft	Included
1	Basement	29'2" x 24'8"	720 sq. ft	No
2	Basement	19'1" x 24'8"	482 sq. ft	No

Home report

7777 Apple Grove Lane, Roanoke, Roanoke County, Virginia,
United States, 24018



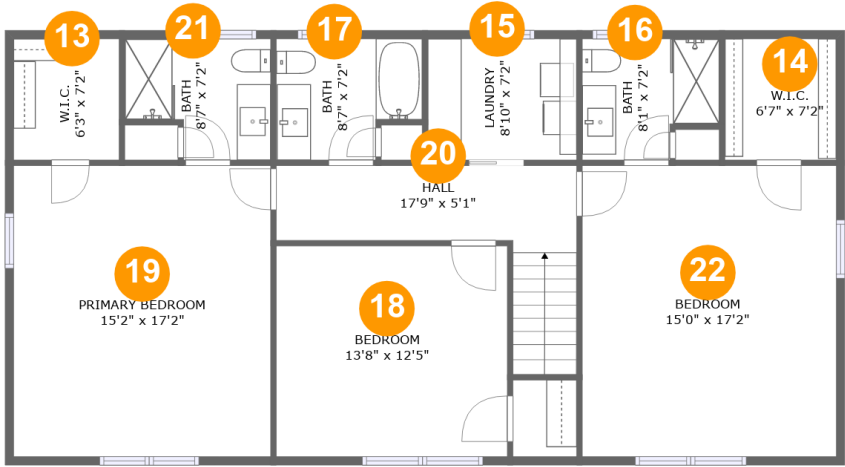
Room dimensions

Floor 2 Total:1274sqft Excluded: 838sqft

#		Max Dimensions	sqft	Included
3	Foyer	9'1" x 6'7"	60 sq. ft	Yes
4	WC	8'6" x 3'2"	27 sq. ft	Yes
5	Family Room	19'1" x 12'10"	253 sq. ft	Yes
6	Patio	32'2" x 12'2"	394 sq. ft	No
7	Dining Area	19'1" x 11'10"	225 sq. ft	Yes
8	Entry	8'6" x 8'1"	67 sq. ft	Yes
9	Living Room	20'4" x 12'9"	270 sq. ft	Yes
10	Porch	49'7" x 8'6"	422 sq. ft	No
11	Kitchen	20'8" x 11'11"	248 sq. ft	Yes
12	Pantry	8'5" x 5'7"	46 sq. ft	Yes

Home report

7777 Apple Grove Lane, Roanoke, Roanoke County, Virginia,
United States, 24018



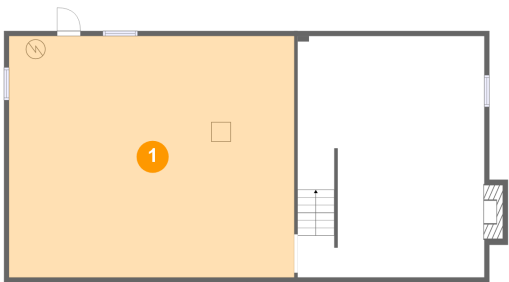
Room dimensions

Floor 3 Total:1274sqft Excluded: 0sqft

#		Max Dimensions	sqft	Included
13	W.I.C.	6'3" x 7'2"	45 sq. ft	Yes
14	W.I.C.	6'7" x 7'2"	47 sq. ft	Yes
15	Laundry	8'10" x 7'2"	63 sq. ft	Yes
16	Bath	8'1" x 7'2"	52 sq. ft	Yes
17	Bath	8'7" x 7'2"	55 sq. ft	Yes
18	Bedroom	13'8" x 12'5"	170 sq. ft	Yes
19	Primary Bedroom	15'2" x 17'2"	261 sq. ft	Yes
20	Hall	17'9" x 5'1"	108 sq. ft	Yes
21	Bath	8'7" x 7'2"	53 sq. ft	Yes
22	Bedroom	15'0" x 17'2"	258 sq. ft	Yes

7777 Apple Grove Lane, Roanoke, Roanoke County, Virginia,
United States, 24018

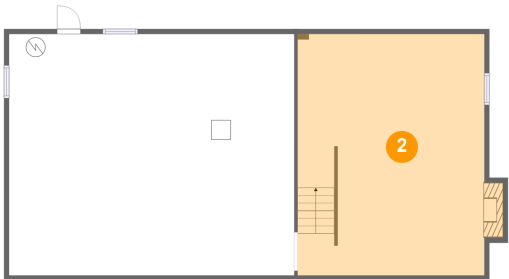
1 Floor 1 - Basement



Max Dimensions: 29'2" x 24'8"
Calculated Area: 720 sq. ft
Included: No

Heated: Yes
Finished: No
Enclosed: Yes
Contiguous: Yes
Permitted: Yes
Wet space: No
Addition: No
Conversion: No

2 Floor 1 - Basement

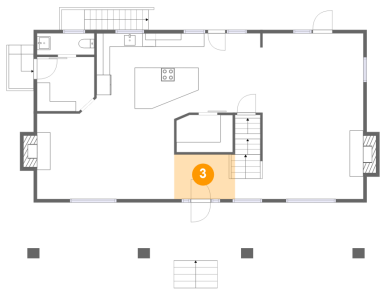


Max Dimensions: 19'1" x 24'8"
Calculated Area: 482 sq. ft
Included: No

Heated: Yes
Finished: No
Enclosed: Yes
Contiguous: Yes
Permitted: Yes
Wet space: No
Addition: No
Conversion: No

7777 Apple Grove Lane, Roanoke, Roanoke County, Virginia,
United States, 24018

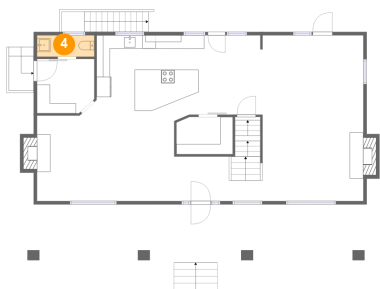
3 Floor 2 - Foyer



Max Dimensions: 9'1" x 6'7"
Calculated Area: 60 sq. ft
Included: Yes

Heated: Yes
Finished: Yes
Enclosed: Yes
Contiguous: Yes
Permitted: Yes
Wet space: No
Addition: No
Conversion: No

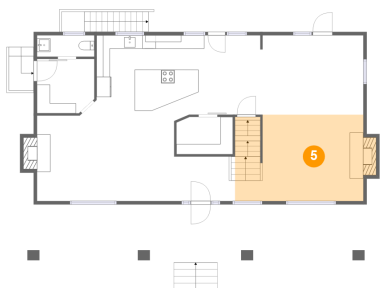
4 Floor 2 - WC



Max Dimensions: 8'6" x 3'2"
Calculated Area: 27 sq. ft
Included: Yes

Heated: Yes
Finished: Yes
Enclosed: Yes
Contiguous: Yes
Permitted: Yes
Wet space: Yes
Addition: No
Conversion: No

5 Floor 2 - Family Room



Max Dimensions: 19'1" x 12'10"
Calculated Area: 253 sq. ft
Included: Yes

Heated: Yes
Finished: Yes
Enclosed: Yes
Contiguous: Yes
Permitted: Yes
Wet space: No
Addition: No
Conversion: No

7777 Apple Grove Lane, Roanoke, Roanoke County, Virginia,
United States, 24018

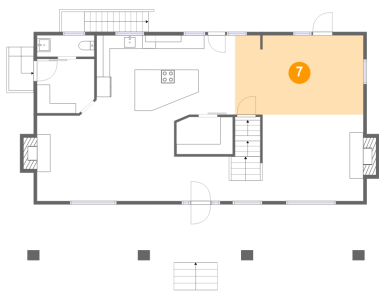
6 Floor 2 - Patio



Max Dimensions: 32'2" x 12'2"
Calculated Area: 394 sq. ft
Included: No

Heated: No
Finished: Yes
Enclosed: No
Contiguous: Yes
Permitted: Yes
Wet space: No
Addition: No
Conversion: No

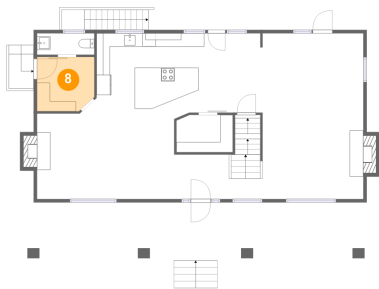
7 Floor 2 - Dining Area



Max Dimensions: 19'1" x 11'10"
Calculated Area: 225 sq. ft
Included: Yes

Heated: Yes
Finished: Yes
Enclosed: Yes
Contiguous: Yes
Permitted: Yes
Wet space: No
Addition: No
Conversion: No

8 Floor 2 - Entry

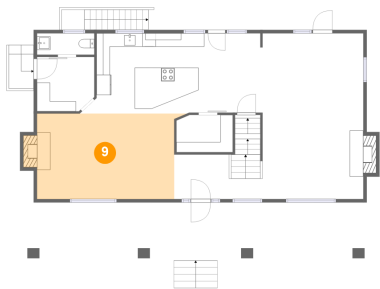


Max Dimensions: 8'6" x 8'1"
Calculated Area: 67 sq. ft
Included: Yes

Heated: Yes
Finished: Yes
Enclosed: Yes
Contiguous: Yes
Permitted: Yes
Wet space: No
Addition: No
Conversion: No

7777 Apple Grove Lane, Roanoke, Roanoke County, Virginia,
United States, 24018

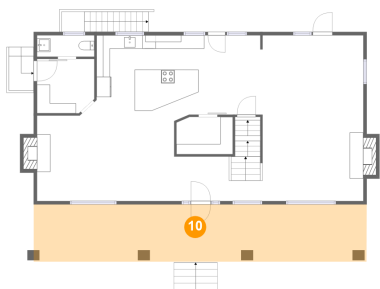
9 Floor 2 - Living Room



Max Dimensions: 20'4" x 12'9"
Calculated Area: 270 sq. ft
Included: Yes

Heated: Yes
Finished: Yes
Enclosed: Yes
Contiguous: Yes
Permitted: Yes
Wet space: No
Addition: No
Conversion: No

10 Floor 2 - Porch



Max Dimensions: 49'7" x 8'6"
Calculated Area: 422 sq. ft
Included: No

Heated: No
Finished: Yes
Enclosed: No
Contiguous: Yes
Permitted: Yes
Wet space: No
Addition: No
Conversion: No

11 Floor 2 - Kitchen



Max Dimensions: 20'8" x 11'11"
Calculated Area: 248 sq. ft
Included: Yes

Heated: Yes
Finished: Yes
Enclosed: Yes
Contiguous: Yes
Permitted: Yes
Wet space: No
Addition: No
Conversion: No

Home report

7777 Apple Grove Lane, Roanoke, Roanoke County, Virginia,
United States, 24018

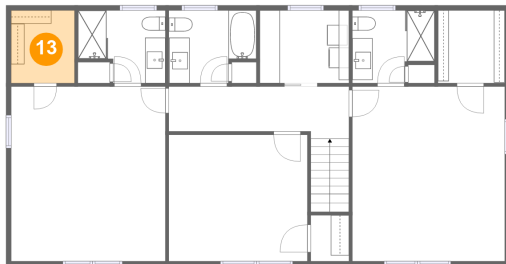
12 Floor 2 - Pantry



Max Dimensions: 8'5" x 5'7"
Calculated Area: 46 sq. ft
Included: Yes

Heated: Yes
Finished: Yes
Enclosed: Yes
Contiguous: Yes
Permitted: Yes
Wet space: No
Addition: No
Conversion: No

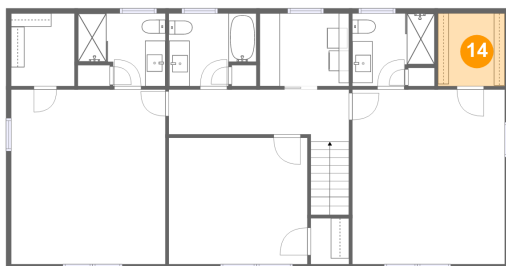
13 Floor 3 - W.I.C.



Max Dimensions: 6'3" x 7'2"
Calculated Area: 45 sq. ft
Included: Yes

Heated: Yes
Finished: Yes
Enclosed: Yes
Contiguous: Yes
Permitted: Yes
Wet space: No
Addition: No
Conversion: No

14 Floor 3 - W.I.C.



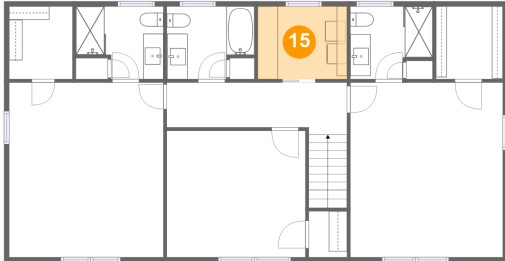
Max Dimensions: 6'7" x 7'2"
Calculated Area: 47 sq. ft
Included: Yes

Heated: Yes
Finished: Yes
Enclosed: Yes
Contiguous: Yes
Permitted: Yes
Wet space: No
Addition: No
Conversion: No

Home report

7777 Apple Grove Lane, Roanoke, Roanoke County, Virginia,
United States, 24018

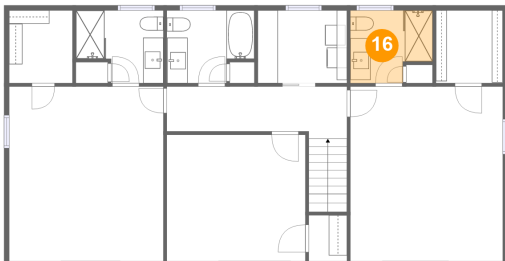
15 Floor 3 - Laundry



Max Dimensions: 8'10" x 7'2"
Calculated Area: 63 sq. ft
Included: Yes

Heated: Yes
Finished: Yes
Enclosed: Yes
Contiguous: Yes
Permitted: Yes
Wet space: No
Addition: No
Conversion: No

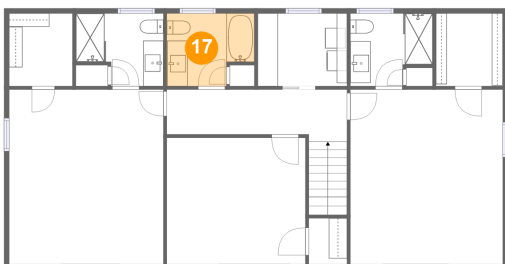
16 Floor 3 - Bath



Max Dimensions: 8'1" x 7'2"
Calculated Area: 52 sq. ft
Included: Yes

Heated: Yes
Finished: Yes
Enclosed: Yes
Contiguous: Yes
Permitted: Yes
Wet space: Yes
Addition: No
Conversion: No

17 Floor 3 - Bath

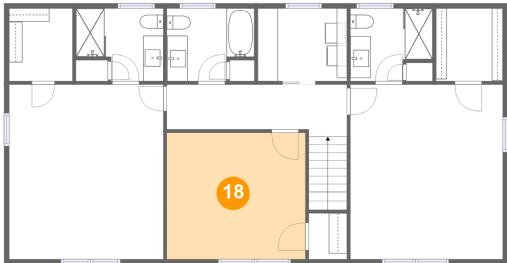


Max Dimensions: 8'7" x 7'2"
Calculated Area: 55 sq. ft
Included: Yes

Heated: Yes
Finished: Yes
Enclosed: Yes
Contiguous: Yes
Permitted: Yes
Wet space: Yes
Addition: No
Conversion: No

7777 Apple Grove Lane, Roanoke, Roanoke County, Virginia,
United States, 24018

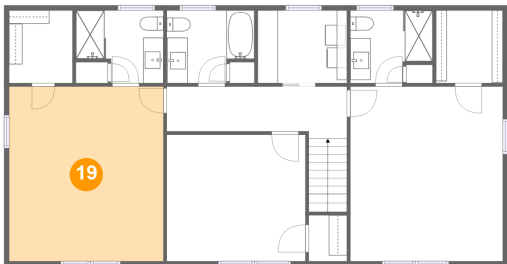
18 Floor 3 - Bedroom



Max Dimensions: 13'8" x 12'5"
Calculated Area: 170 sq. ft
Included: Yes

Heated: Yes
Finished: Yes
Enclosed: Yes
Contiguous: Yes
Permitted: Yes
Wet space: No
Addition: No
Conversion: No

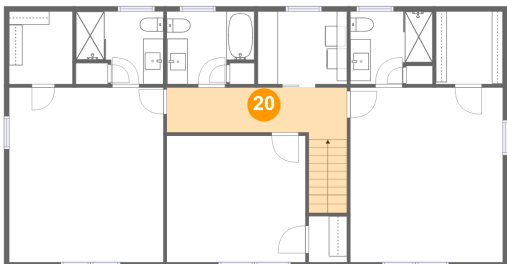
19 Floor 3 - Primary Bedroom



Max Dimensions: 15'2" x 17'2"
Calculated Area: 261 sq. ft
Included: Yes

Heated: Yes
Finished: Yes
Enclosed: Yes
Contiguous: Yes
Permitted: Yes
Wet space: No
Addition: No
Conversion: No

20 Floor 3 - Hall

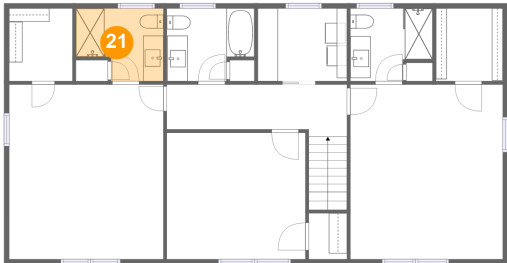


Max Dimensions: 17'9" x 5'1"
Calculated Area: 108 sq. ft
Included: Yes

Heated: Yes
Finished: Yes
Enclosed: Yes
Contiguous: Yes
Permitted: Yes
Wet space: No
Addition: No
Conversion: No

7777 Apple Grove Lane, Roanoke, Roanoke County, Virginia,
United States, 24018

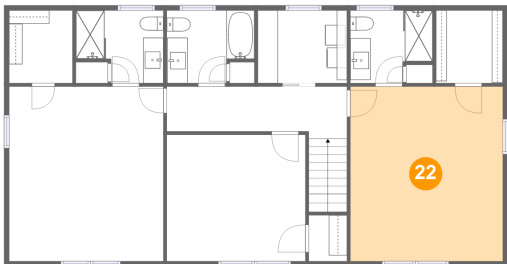
21 Floor 3 - Bath



Max Dimensions: 8'7" x 7'2"
Calculated Area: 53 sq. ft
Included: Yes

Heated: Yes
Finished: Yes
Enclosed: Yes
Contiguous: Yes
Permitted: Yes
Wet space: Yes
Addition: No
Conversion: No

22 Floor 3 - Bedroom



Max Dimensions: 15'0" x 17'2"
Calculated Area: 258 sq. ft
Included: Yes

Heated: Yes
Finished: Yes
Enclosed: Yes
Contiguous: Yes
Permitted: Yes
Wet space: No
Addition: No
Conversion: No