

Recreation Room  
24'10" x 16'3"

Bath  
8'9" x 9'4"

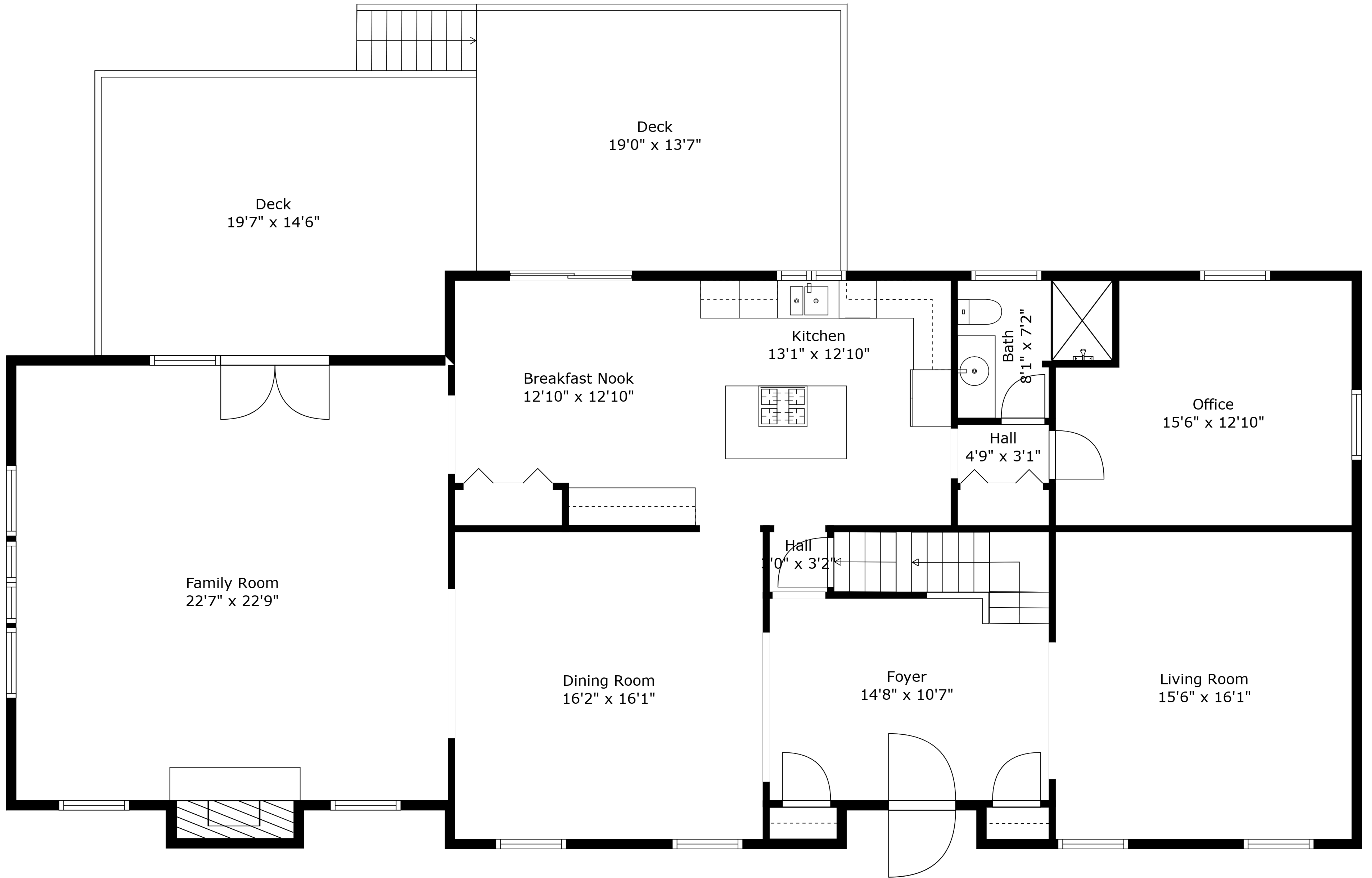
Bedroom  
12'8" x 12'10"

Hall  
11'3" x 8'7"

Basement  
46'11" x 16'1"

**TOTAL: 4188 sq. ft**  
 BELOW GROUND: 758 sq. ft, FLOOR 2: 1883 sq. ft, FLOOR 3: 1547 sq. ft  
 EXCLUDED AREAS: BASEMENT: 614 sq. ft, DECK: 583 sq. ft, FIREPLACE: 14 sq. ft,  
 LOW CEILING: 38 sq. ft, OPEN TO BELOW: 68 sq. ft

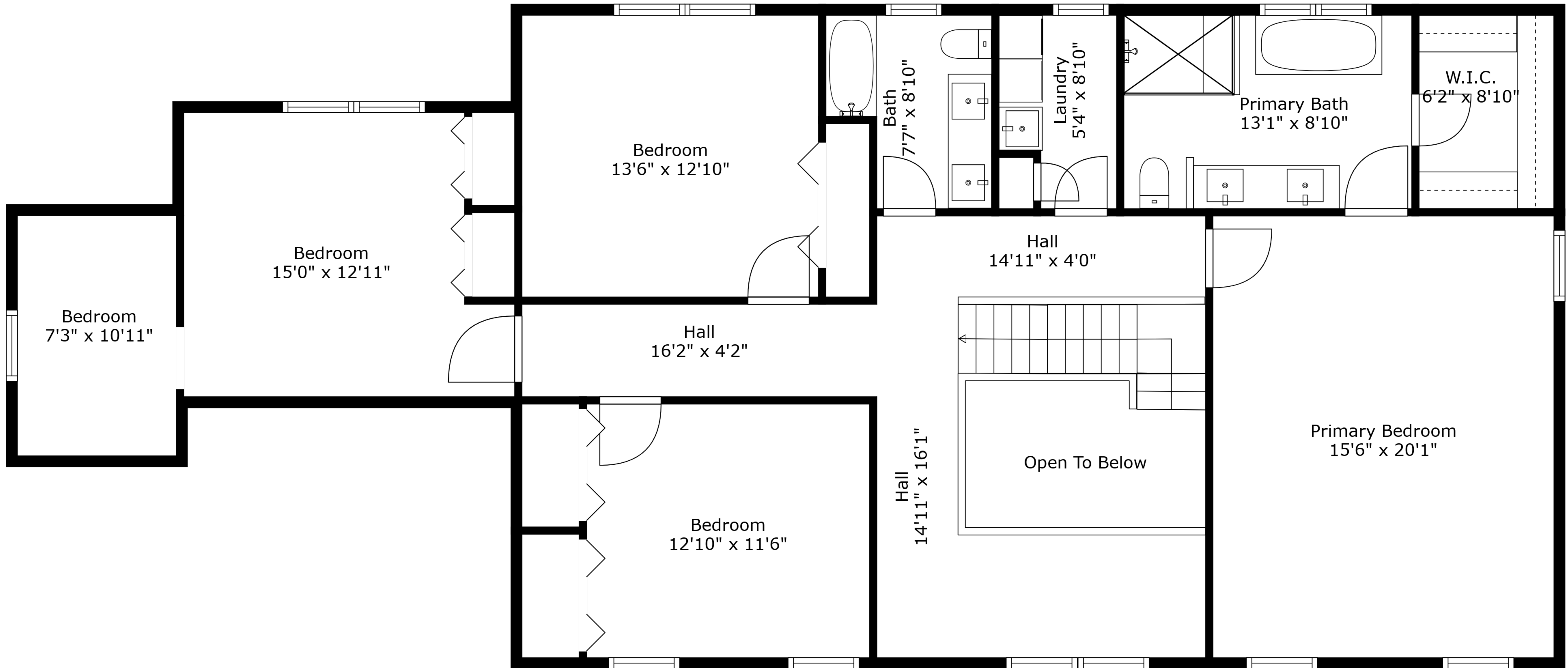
Measurements Are Approximate - Deemed Highly Reliable But Not Guaranteed



**TOTAL: 4188 sq. ft**

BELOW GROUND: 758 sq. ft, FLOOR 2: 1883 sq. ft, FLOOR 3: 1547 sq. ft  
 EXCLUDED AREAS: BASEMENT: 614 sq. ft, DECK: 583 sq. ft, FIREPLACE: 14 sq. ft,  
 LOW CEILING: 38 sq. ft, OPEN TO BELOW: 68 sq. ft

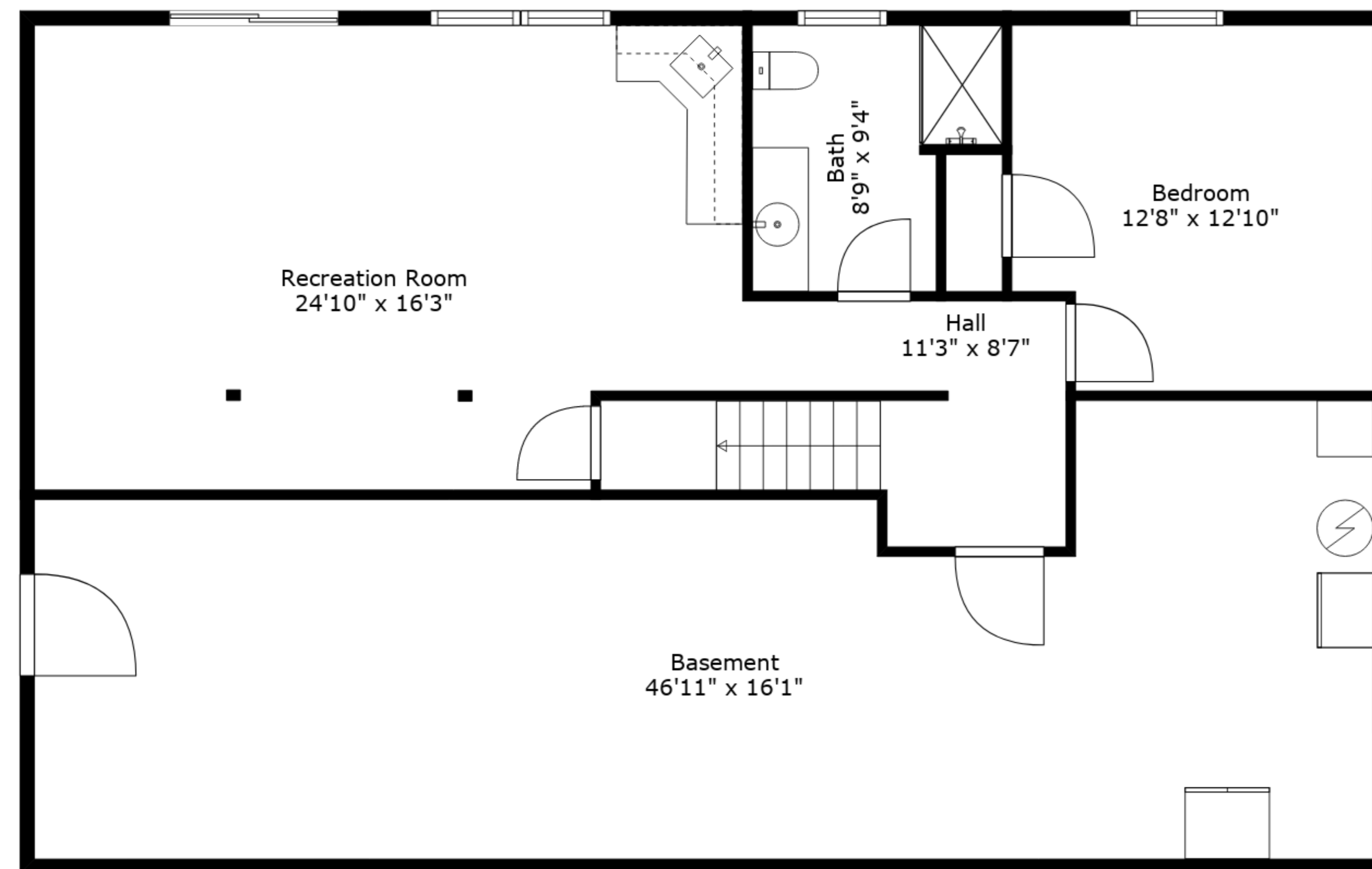
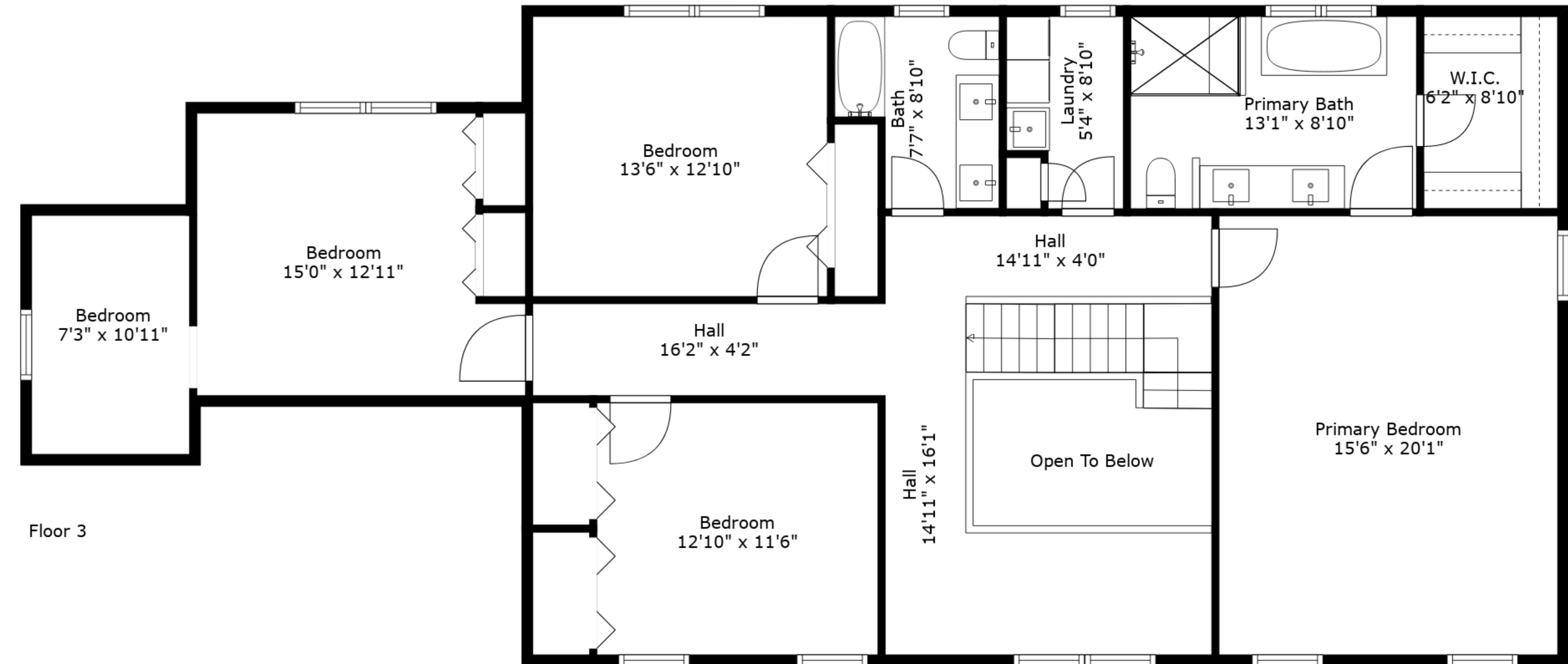
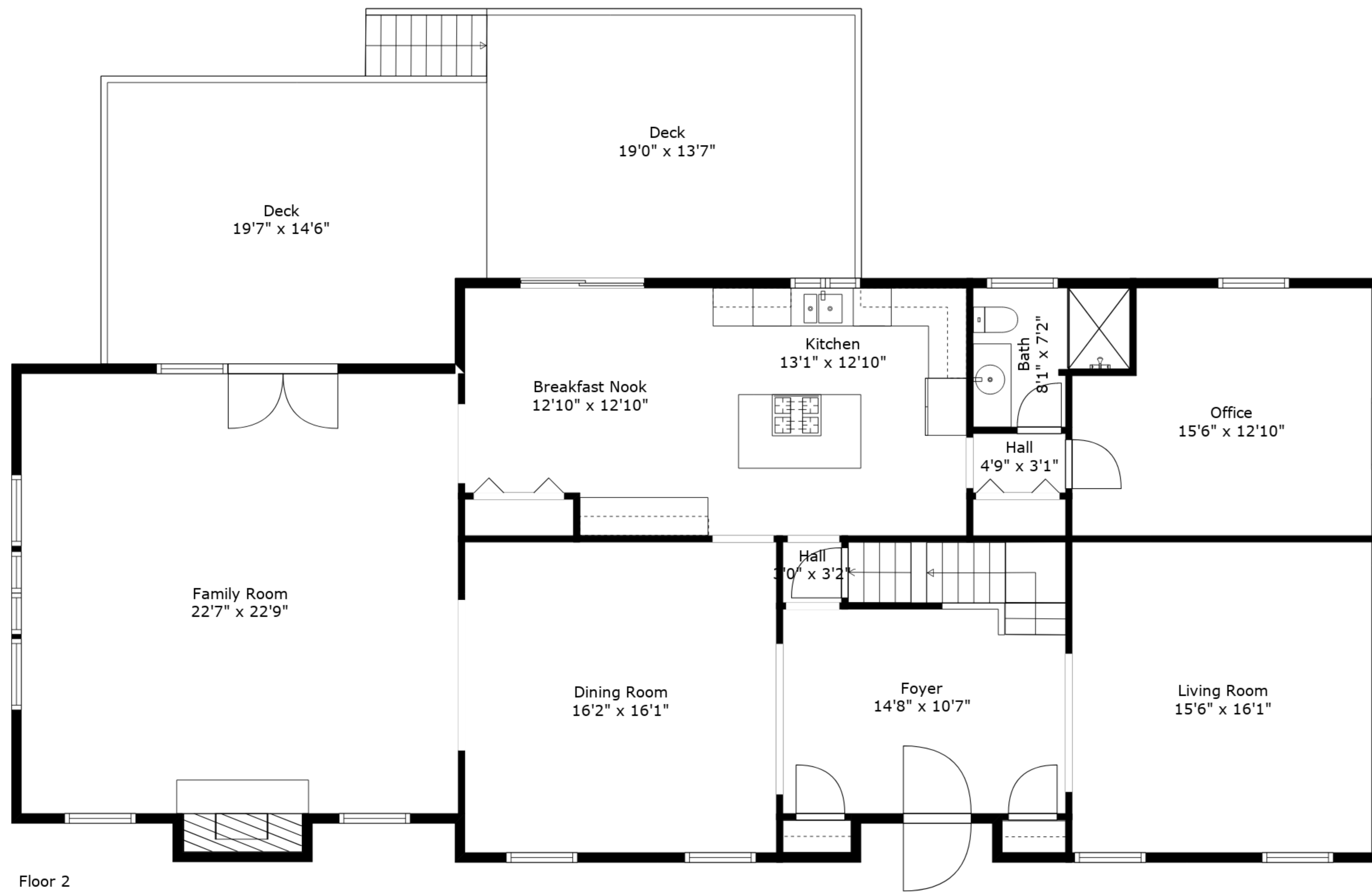
Measurements Are Approximate - Deemed Highly Reliable But Not Guaranteed



**TOTAL: 4188 sq. ft**

BELOW GROUND: 758 sq. ft, FLOOR 2: 1883 sq. ft, FLOOR 3: 1547 sq. ft  
 EXCLUDED AREAS: BASEMENT: 614 sq. ft, DECK: 583 sq. ft, FIREPLACE: 14 sq. ft,  
 LOW CEILING: 38 sq. ft, OPEN TO BELOW: 68 sq. ft

Measurements Are Approximate - Deemed Highly Reliable But Not Guaranteed



**TOTAL: 4188 sq. ft**  
 BELOW GROUND: 758 sq. ft, FLOOR 2: 1883 sq. ft, FLOOR 3: 1547 sq. ft  
 EXCLUDED AREAS: BASEMENT: 614 sq. ft, DECK: 583 sq. ft, FIREPLACE: 14 sq. ft,  
 LOW CEILING: 38 sq. ft, OPEN TO BELOW: 68 sq. ft

Measurements Are Approximate - Deemed Highly Reliable But Not Guaranteed