

Home report

1835 Alicia Way, Clearwater, Pinellas County, Florida, United States, 33764



Total Area: 9014 sq. ft

Floor 1: 9014 sq. ft, Floor 2: 0 sq. ft

Excluded: Bath Toilet 152 sq. ft, Storage 396 sq. ft, Office 228 sq. ft, Garage 2846 sq. ft, Room Electrical 75 sq. ft, Room 318 sq. ft, Attic 308 sq. ft, Opentobelow 762 sq. ft

Property summary

2 Floors

5 Bedrooms

6 Bathrooms

Home report

**1835 Alicia Way, Clearwater, Pinellas County, Florida, United States, 33764**

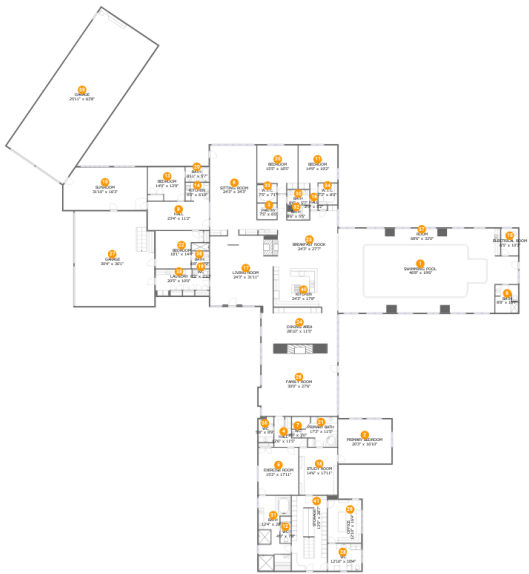


**3**  
Half baths



**2**  
Garages

1835 Alicia Way, Clearwater, Pinellas County, Florida, United States, 33764



Room dimensions

Floor 1 Total:9014sqft   Excluded: 3697sqft

#		Max Dimensions	sqft	Included
1	Swimming Pool	46'8" x 19'6"	836 sq. ft	No
2	Primary Bedroom	20'3" x 16'10"	341 sq. ft	Yes
3	Pantry	7'5" x 6'0"	45 sq. ft	Yes
4	Hall	12'6" x 11'5"	75 sq. ft	Yes
5	Exercise Room	15'2" x 17'11"	272 sq. ft	Yes
6	Bath	8'8" x 10'7"	90 sq. ft	Yes
7	WC	3'5" x 3'0"	10 sq. ft	Yes
8	Sitting Room	24'3" x 34'3"	605 sq. ft	Yes
9	Hall	23'4" x 11'2"	255 sq. ft	Yes
10	Sunroom	31'10" x 16'3"	501 sq. ft	Yes
11	Bedroom	14'9" x 19'2"	233 sq. ft	Yes

## Home report

**1835 Alicia Way, Clearwater, Pinellas County, Florida, United States, 33764**

#		Max Dimensions	sqft	Included
12	WC	4'0" x 7'8"	30 sq. ft	Yes
13	Bedroom	14'0" x 12'9"	163 sq. ft	Yes
14	Kitchen	9'0" x 6'10"	62 sq. ft	Yes
15	Electrical Room	6'5" x 10'3"	66 sq. ft	No
16	Hall	2'9" x 5'2"	14 sq. ft	Yes
17	Living Room	24'3" x 31'11"	697 sq. ft	Yes
18	Study Room	14'6" x 17'11"	261 sq. ft	Yes
19	WC	6'5" x 2'10"	18 sq. ft	Yes
20	Bath	8'11" x 5'7"	50 sq. ft	Yes
21	Primary Bath	17'3" x 11'5"	152 sq. ft	Yes
22	Bedroom	18'1" x 14'4"	211 sq. ft	Yes
23	Breakfast Nook	24'3" x 27'7"	508 sq. ft	Yes
24	Dining Area	28'10" x 11'5"	330 sq. ft	Yes
25	Bedroom	15'5" x 18'5"	243 sq. ft	Yes
26	Family Room	30'0" x 27'6"	802 sq. ft	Yes
27	Garage	30'4" x 36'1"	1072 sq. ft	No
28	WC	12'10" x 10'4"	132 sq. ft	No
29	Office	12'10" x 16'4"	215 sq. ft	No
30	Bath	8'6" x 5'7"	47 sq. ft	Yes
31	Bath	12'4" x 28'7"	303 sq. ft	Yes
32	Bath	8'6" x 5'5"	46 sq. ft	Yes

## Home report

**1835 Alicia Way, Clearwater, Pinellas County, Florida, United States, 33764**

#		Max Dimensions	sqft	Included
33	W.I.C.	7'5" x 7'1"	53 sq. ft	Yes
34	W.I.C.	7'2" x 8'0"	58 sq. ft	Yes
35	WC	5'8" x 8'9"	45 sq. ft	Yes
36	Bath	6'8" x 9'9"	65 sq. ft	Yes
37	Room	68'6" x 32'0"	2024 sq. ft	Yes
38	Laundry	20'5" x 10'0"	150 sq. ft	Yes
39	Garage	25'11" x 63'8"	1652 sq. ft	No
40	Kitchen	24'3" x 17'8"	430 sq. ft	Yes
41	Storage	13'5" x 28'7"	383 sq. ft	No

1835 Alicia Way, Clearwater, Pinellas County, Florida, United States, 33764



Room dimensions

Floor 2 Total:0sqft   Excluded: 1388sqft

#		Max Dimensions	sqft	Included
42	Attic	9'6" x 28'5"	265 sq. ft	No
43	Open To Below	26'7" x 27'0"	716 sq. ft	No
44	Room	21'10" x 13'1"	285 sq. ft	No

1835 Alicia Way, Clearwater, Pinellas County, Florida, United States, 33764

1 Floor 1 - Swimming Pool



Max Dimensions: 46'8" x 19'6"  
Calculated Area: 836 sq. ft  
Included: No

Heated: No  
Finished: No  
Enclosed: No  
Contiguous: Yes  
Permitted: No  
Wet space: No  
Addition: No  
Conversion: No

2 Floor 1 - Primary Bedroom



Max Dimensions: 20'3" x 16'10"  
Calculated Area: 341 sq. ft  
Included: Yes

Heated: Yes  
Finished: Yes  
Enclosed: Yes  
Contiguous: Yes  
Permitted: Yes  
Wet space: No  
Addition: No  
Conversion: No

1835 Alicia Way, Clearwater, Pinellas County, Florida, United States, 33764

### 3 Floor 1 - Pantry



Max Dimensions: 7'5" x 6'0"  
Calculated Area: 45 sq. ft  
Included: Yes

Heated: Yes  
Finished: Yes  
Enclosed: Yes  
Contiguous: Yes  
Permitted: Yes  
Wet space: No  
Addition: No  
Conversion: No

### 4 Floor 1 - Hall



Max Dimensions: 12'6" x 11'5"  
Calculated Area: 75 sq. ft  
Included: Yes

Heated: Yes  
Finished: Yes  
Enclosed: Yes  
Contiguous: Yes  
Permitted: Yes  
Wet space: No  
Addition: No  
Conversion: No

### 5 Floor 1 - Exercise Room



Max Dimensions: 15'2" x 17'11"  
Calculated Area: 272 sq. ft  
Included: Yes

Heated: Yes  
Finished: Yes  
Enclosed: Yes  
Contiguous: Yes  
Permitted: Yes  
Wet space: No  
Addition: No  
Conversion: No



1835 Alicia Way, Clearwater, Pinellas County, Florida, United States, 33764

## 6 Floor 1 - Bath



Max Dimensions: 8'8" x 10'7"  
Calculated Area: 90 sq. ft  
Included: Yes

Heated: Yes  
Finished: Yes  
Enclosed: Yes  
Contiguous: Yes  
Permitted: Yes  
Wet space: Yes  
Addition: No  
Conversion: No

## 7 Floor 1 - WC



Max Dimensions: 3'5" x 3'0"  
Calculated Area: 10 sq. ft  
Included: Yes

Heated: Yes  
Finished: Yes  
Enclosed: Yes  
Contiguous: Yes  
Permitted: Yes  
Wet space: No  
Addition: No  
Conversion: No

## 8 Floor 1 - Sitting Room



Max Dimensions: 24'3" x 34'3"  
Calculated Area: 605 sq. ft  
Included: Yes

Heated: Yes  
Finished: Yes  
Enclosed: Yes  
Contiguous: Yes  
Permitted: Yes  
Wet space: No  
Addition: No  
Conversion: No

1835 Alicia Way, Clearwater, Pinellas County, Florida, United States, 33764

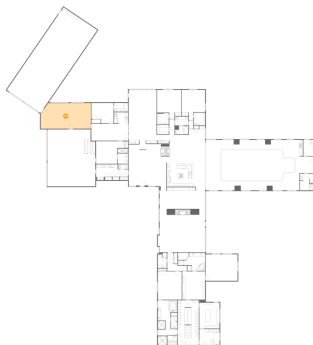
## 9 Floor 1 - Hall



Max Dimensions: 23'4" x 11'2"  
Calculated Area: 255 sq. ft  
Included: Yes

Heated: Yes  
Finished: Yes  
Enclosed: Yes  
Contiguous: Yes  
Permitted: Yes  
Wet space: No  
Addition: No  
Conversion: No

## 10 Floor 1 - Sunroom



Max Dimensions: 31'10" x 16'3"  
Calculated Area: 501 sq. ft  
Included: Yes

Heated: Yes  
Finished: Yes  
Enclosed: Yes  
Contiguous: Yes  
Permitted: Yes  
Wet space: No  
Addition: No  
Conversion: No

## 11 Floor 1 - Bedroom



Max Dimensions: 14'9" x 19'2"  
Calculated Area: 233 sq. ft  
Included: Yes

Heated: Yes  
Finished: Yes  
Enclosed: Yes  
Contiguous: Yes  
Permitted: Yes  
Wet space: No  
Addition: No  
Conversion: No

1835 Alicia Way, Clearwater, Pinellas County, Florida, United States, 33764

## 12 Floor 1 - WC



Max Dimensions: 4'0" x 7'8"  
Calculated Area: 30 sq. ft  
Included: Yes

Heated: Yes  
Finished: Yes  
Enclosed: Yes  
Contiguous: Yes  
Permitted: Yes  
Wet space: No  
Addition: No  
Conversion: No

## 13 Floor 1 - Bedroom



Max Dimensions: 14'0" x 12'9"  
Calculated Area: 163 sq. ft  
Included: Yes

Heated: Yes  
Finished: Yes  
Enclosed: Yes  
Contiguous: Yes  
Permitted: Yes  
Wet space: No  
Addition: No  
Conversion: No

## 14 Floor 1 - Kitchen



Max Dimensions: 9'0" x 6'10"  
Calculated Area: 62 sq. ft  
Included: Yes

Heated: Yes  
Finished: Yes  
Enclosed: Yes  
Contiguous: Yes  
Permitted: Yes  
Wet space: No  
Addition: No  
Conversion: No

1835 Alicia Way, Clearwater, Pinellas County, Florida, United States, 33764

## 15 Floor 1 - Electrical Room



Max Dimensions: 6'5" x 10'3"  
Calculated Area: 66 sq. ft  
Included: No

Heated: No  
Finished: No  
Enclosed: Yes  
Contiguous: Yes  
Permitted: Yes  
Wet space: No  
Addition: No  
Conversion: No

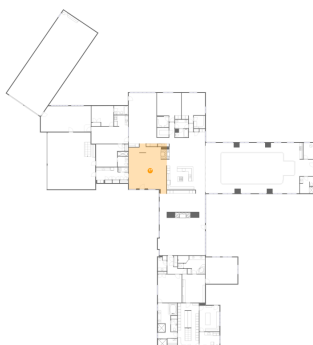
## 16 Floor 1 - Hall



Max Dimensions: 2'9" x 5'2"  
Calculated Area: 14 sq. ft  
Included: Yes

Heated: Yes  
Finished: Yes  
Enclosed: Yes  
Contiguous: Yes  
Permitted: Yes  
Wet space: No  
Addition: No  
Conversion: No

## 17 Floor 1 - Living Room



Max Dimensions: 24'3" x 31'11"  
Calculated Area: 697 sq. ft  
Included: Yes

Heated: Yes  
Finished: Yes  
Enclosed: Yes  
Contiguous: Yes  
Permitted: Yes  
Wet space: No  
Addition: No  
Conversion: No

1835 Alicia Way, Clearwater, Pinellas County, Florida, United States, 33764

## 18 Floor 1 - Study Room



Max Dimensions: 14'6" x 17'11"  
Calculated Area: 261 sq. ft  
Included: Yes

Heated: Yes  
Finished: Yes  
Enclosed: Yes  
Contiguous: Yes  
Permitted: Yes  
Wet space: No  
Addition: No  
Conversion: No

## 19 Floor 1 - WC



Max Dimensions: 6'5" x 2'10"  
Calculated Area: 18 sq. ft  
Included: Yes

Heated: Yes  
Finished: Yes  
Enclosed: Yes  
Contiguous: Yes  
Permitted: Yes  
Wet space: No  
Addition: No  
Conversion: No

## 20 Floor 1 - Bath



Max Dimensions: 8'11" x 5'7"  
Calculated Area: 50 sq. ft  
Included: Yes

Heated: Yes  
Finished: Yes  
Enclosed: Yes  
Contiguous: Yes  
Permitted: Yes  
Wet space: Yes  
Addition: No  
Conversion: No

1835 Alicia Way, Clearwater, Pinellas County, Florida, United States, 33764

21 Floor 1 - Primary Bath



Max Dimensions: 17'3" x 11'5"  
Calculated Area: 152 sq. ft  
Included: Yes

Heated: Yes  
Finished: Yes  
Enclosed: Yes  
Contiguous: Yes  
Permitted: Yes  
Wet space: Yes  
Addition: No  
Conversion: No

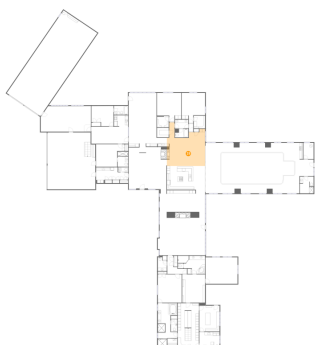
22 Floor 1 - Bedroom



Max Dimensions: 18'1" x 14'4"  
Calculated Area: 211 sq. ft  
Included: Yes

Heated: Yes  
Finished: Yes  
Enclosed: Yes  
Contiguous: Yes  
Permitted: Yes  
Wet space: No  
Addition: No  
Conversion: No

23 Floor 1 - Breakfast Nook



Max Dimensions: 24'3" x 27'7"  
Calculated Area: 508 sq. ft  
Included: Yes

Heated: Yes  
Finished: Yes  
Enclosed: Yes  
Contiguous: Yes  
Permitted: Yes  
Wet space: No  
Addition: No  
Conversion: No

1835 Alicia Way, Clearwater, Pinellas County, Florida, United States, 33764

## 24 Floor 1 - Dining Area



Max Dimensions: 28'10" x 11'5"  
Calculated Area: 330 sq. ft  
Included: Yes

Heated: Yes  
Finished: Yes  
Enclosed: Yes  
Contiguous: Yes  
Permitted: Yes  
Wet space: No  
Addition: No  
Conversion: No

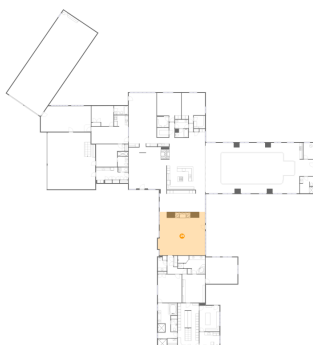
## 25 Floor 1 - Bedroom



Max Dimensions: 15'5" x 18'5"  
Calculated Area: 243 sq. ft  
Included: Yes

Heated: Yes  
Finished: Yes  
Enclosed: Yes  
Contiguous: Yes  
Permitted: Yes  
Wet space: No  
Addition: No  
Conversion: No

## 26 Floor 1 - Family Room

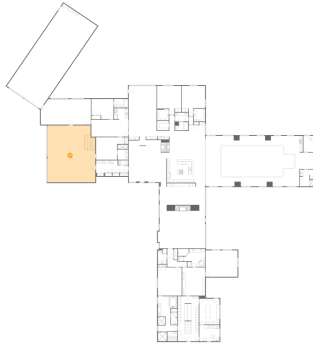


Max Dimensions: 30'0" x 27'6"  
Calculated Area: 802 sq. ft  
Included: Yes

Heated: Yes  
Finished: Yes  
Enclosed: Yes  
Contiguous: Yes  
Permitted: Yes  
Wet space: No  
Addition: No  
Conversion: No

1835 Alicia Way, Clearwater, Pinellas County, Florida, United States, 33764

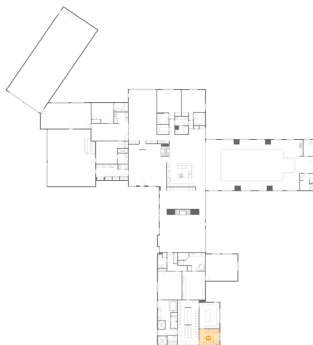
## 27 Floor 1 - Garage



Max Dimensions: 30'4" x 36'1"  
Calculated Area: 1072 sq. ft  
Included: No

Heated: No  
Finished: No  
Enclosed: Yes  
Contiguous: Yes  
Permitted: Yes  
Wet space: No  
Addition: No  
Conversion: No

## 28 Floor 1 - WC



Max Dimensions: 12'10" x 10'4"  
Calculated Area: 132 sq. ft  
Included: No

Heated: Yes  
Finished: Yes  
Enclosed: Yes  
Contiguous: No  
Permitted: Yes  
Wet space: Yes  
Addition: No  
Conversion: No

## 29 Floor 1 - Office



Max Dimensions: 12'10" x 16'4"  
Calculated Area: 215 sq. ft  
Included: No

Heated: Yes  
Finished: Yes  
Enclosed: Yes  
Contiguous: No  
Permitted: Yes  
Wet space: No  
Addition: No  
Conversion: No



1835 Alicia Way, Clearwater, Pinellas County, Florida, United States, 33764

### 30 Floor 1 - Bath



Max Dimensions: 8'6" x 5'7"  
Calculated Area: 47 sq. ft  
Included: Yes

Heated: Yes  
Finished: Yes  
Enclosed: Yes  
Contiguous: Yes  
Permitted: Yes  
Wet space: Yes  
Addition: No  
Conversion: No

### 31 Floor 1 - Bath



Max Dimensions: 12'4" x 28'7"  
Calculated Area: 303 sq. ft  
Included: Yes

Heated: Yes  
Finished: Yes  
Enclosed: Yes  
Contiguous: Yes  
Permitted: Yes  
Wet space: Yes  
Addition: No  
Conversion: No

### 32 Floor 1 - Bath



Max Dimensions: 8'6" x 5'5"  
Calculated Area: 46 sq. ft  
Included: Yes

Heated: Yes  
Finished: Yes  
Enclosed: Yes  
Contiguous: Yes  
Permitted: Yes  
Wet space: Yes  
Addition: No  
Conversion: No

1835 Alicia Way, Clearwater, Pinellas County, Florida, United States, 33764

### 33 Floor 1 - W.I.C.



Max Dimensions: 7'5" x 7'1"  
Calculated Area: 53 sq. ft  
Included: Yes

Heated: Yes  
Finished: Yes  
Enclosed: Yes  
Contiguous: Yes  
Permitted: Yes  
Wet space: No  
Addition: No  
Conversion: No

### 34 Floor 1 - W.I.C.



Max Dimensions: 7'2" x 8'0"  
Calculated Area: 58 sq. ft  
Included: Yes

Heated: Yes  
Finished: Yes  
Enclosed: Yes  
Contiguous: Yes  
Permitted: Yes  
Wet space: No  
Addition: No  
Conversion: No

### 35 Floor 1 - WC



Max Dimensions: 5'8" x 8'9"  
Calculated Area: 45 sq. ft  
Included: Yes

Heated: Yes  
Finished: Yes  
Enclosed: Yes  
Contiguous: Yes  
Permitted: Yes  
Wet space: No  
Addition: No  
Conversion: No

1835 Alicia Way, Clearwater, Pinellas County, Florida, United States, 33764

36 Floor 1 - Bath



Max Dimensions: 6'8" x 9'9"  
Calculated Area: 65 sq. ft  
Included: Yes

Heated: Yes  
Finished: Yes  
Enclosed: Yes  
Contiguous: Yes  
Permitted: Yes  
Wet space: Yes  
Addition: No  
Conversion: No

37 Floor 1 - Room



Max Dimensions: 68'6" x 32'0"  
Calculated Area: 2024 sq. ft  
Included: Yes

Heated: Yes  
Finished: Yes  
Enclosed: Yes  
Contiguous: Yes  
Permitted: Yes  
Wet space: No  
Addition: No  
Conversion: No

38 Floor 1 - Laundry

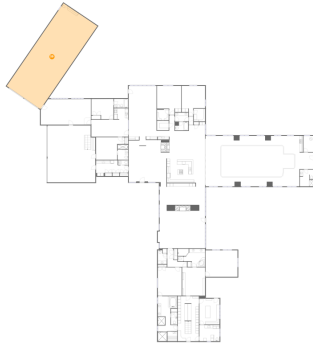


Max Dimensions: 20'5" x 10'0"  
Calculated Area: 150 sq. ft  
Included: Yes

Heated: Yes  
Finished: Yes  
Enclosed: Yes  
Contiguous: Yes  
Permitted: Yes  
Wet space: No  
Addition: No  
Conversion: No

1835 Alicia Way, Clearwater, Pinellas County, Florida, United States, 33764

### 39 Floor 1 - Garage



Max Dimensions: 25'11" x 63'8"  
Calculated Area: 1652 sq. ft  
Included: No

Heated: No  
Finished: No  
Enclosed: Yes  
Contiguous: Yes  
Permitted: Yes  
Wet space: No  
Addition: No  
Conversion: No

### 40 Floor 1 - Kitchen



Max Dimensions: 24'3" x 17'8"  
Calculated Area: 430 sq. ft  
Included: Yes

Heated: Yes  
Finished: Yes  
Enclosed: Yes  
Contiguous: Yes  
Permitted: Yes  
Wet space: No  
Addition: No  
Conversion: No

### 41 Floor 1 - Storage



Max Dimensions: 13'5" x 28'7"  
Calculated Area: 383 sq. ft  
Included: No

Heated: No  
Finished: No  
Enclosed: No  
Contiguous: Yes  
Permitted: Yes  
Wet space: No  
Addition: No  
Conversion: No

1835 Alicia Way, Clearwater, Pinellas County, Florida, United States, 33764

42 Floor 2 - Attic



Max Dimensions: 9'6" x 28'5"  
Calculated Area: 265 sq. ft  
Included: No

Heated: No  
Finished: No  
Enclosed: Yes  
Contiguous: Yes  
Permitted: Yes  
Wet space: No  
Addition: No  
Conversion: No

43 Floor 2 - Open To Below



Max Dimensions: 26'7" x 27'0"  
Calculated Area: 716 sq. ft  
Included: No

Heated: No  
Finished: No  
Enclosed: No  
Contiguous: Yes  
Permitted: No  
Wet space: No  
Addition: No  
Conversion: No

44 Floor 2 - Room



Max Dimensions: 21'10" x 13'1"  
Calculated Area: 285 sq. ft  
Included: No

Heated: Yes  
Finished: Yes  
Enclosed: Yes  
Contiguous: No  
Permitted: Yes  
Wet space: No  
Addition: No  
Conversion: No