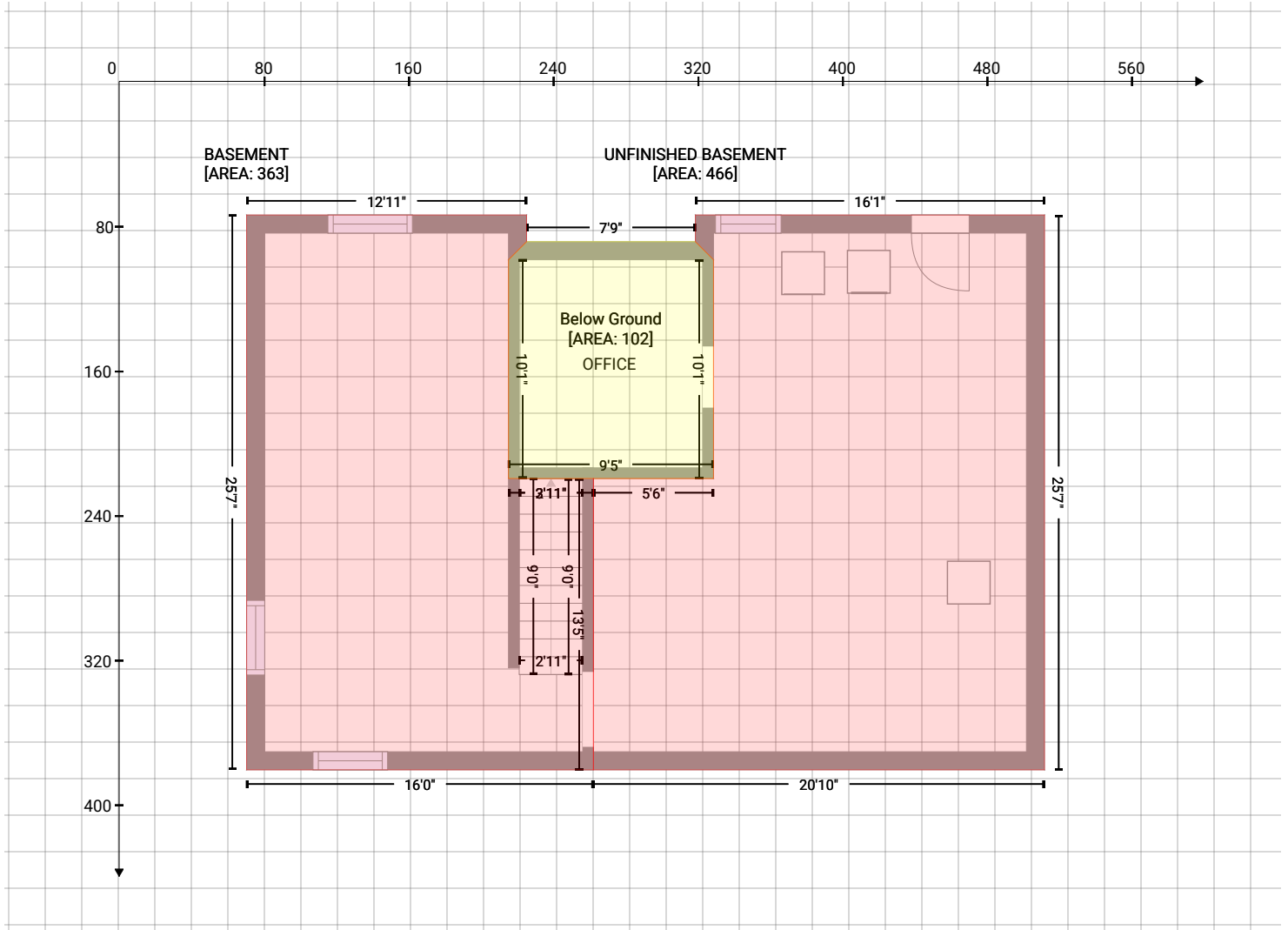


14 Soundview Loop, South Salem, NY, United States

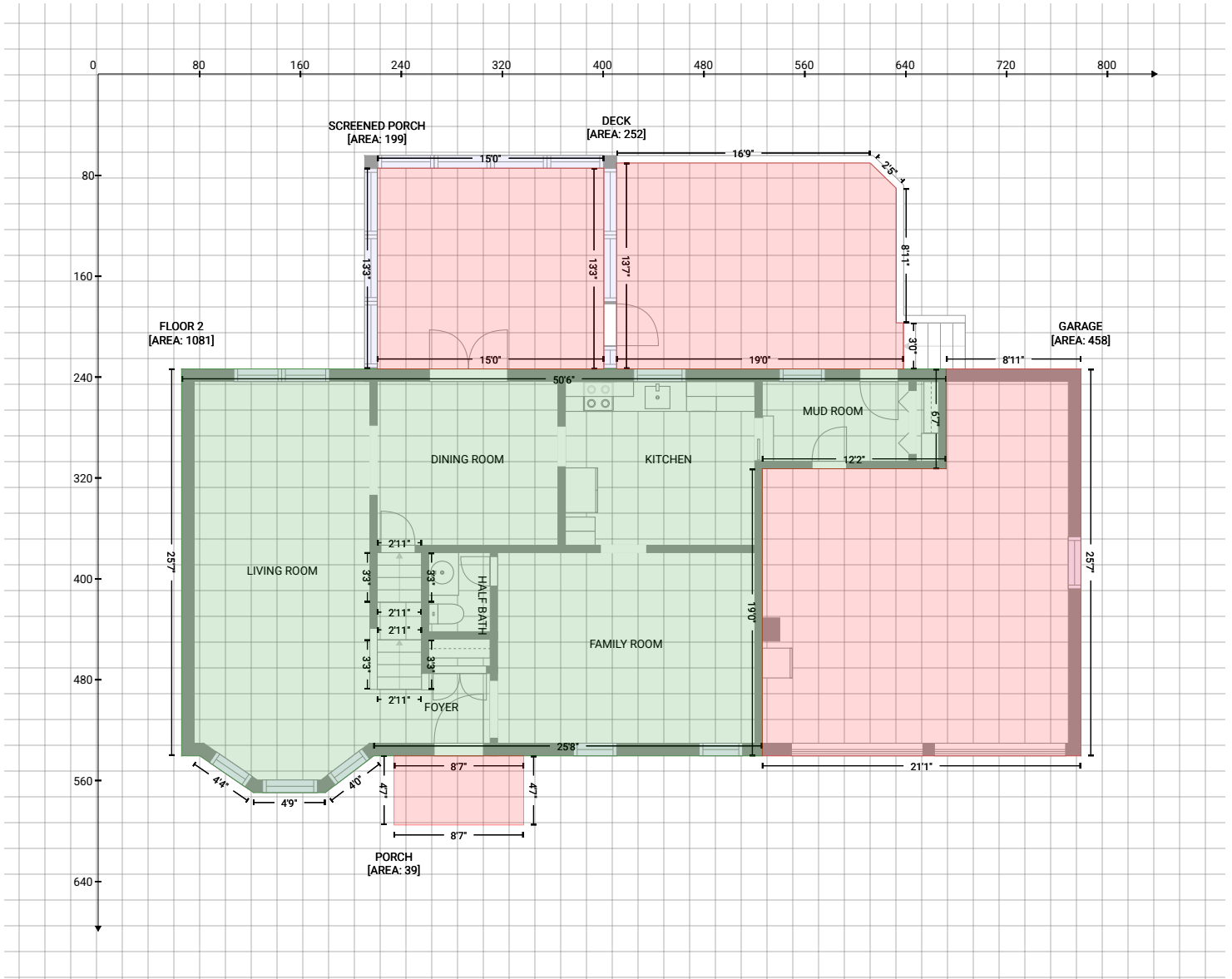
Gross Living Area: 2409 sq. ft



Space	Area (sq. ft)	Calculation <small>Coordinate Polygon Area Algorithm using inches</small>
Below Ground (Living area)	102	$-\left((318.8 + 328.8) * (88.7 - 98.7) + (328.8 + 328.8) * (98.7 - 219.7) + (328.8 + 215.4) * (219.7 - 219.7) + (215.4 + 215.4) * (219.7 - 98.7) + (215.4 + 225.4) * (98.7 - 88.7) + (225.4 + 318.8) * (88.7 - 88.7)\right) * 0.5 * 0.00694$
BASEMENT (Non-living area)	363	$-\left((225.4 + 225.4) * (73.9 - 88.7) + (225.4 + 215.4) * (88.7 - 98.7) + (215.4 + 215.4) * (98.7 - 219.7) + (215.4 + 262.4) * (219.7 - 219.7) + (262.4 + 262.4) * (219.7 - 380.8) + (262.4 + 70.5) * (380.8 - 380.8) + (70.5 + 70.5) * (380.8 - 73.9) + (70.5 + 225.4) * (73.9 - 73.9)\right) * 0.5 * 0.00694$
UNFINISHED BASEMENT (Non-living area)	466	$-\left((512 + 512) * (73.9 - 380.8) + (512 + 262.4) * (380.8 - 380.8) + (262.4 + 262.4) * (380.8 - 219.7) + (262.4 + 328.8) * (219.7 - 219.7) + (328.8 + 328.8) * (219.7 - 98.7) + (328.8 + 318.8) * (98.7 - 88.7) + (318.8 + 318.8) * (88.7 - 73.9) + (318.8 + 512) * (73.9 - 73.9)\right) * 0.5 * 0.00694$

14 Soundview Loop, South Salem, NY, United States

Gross Living Area: 2409 sq. ft



Space	Area (sq. ft)	Calculation
FLOOR 2 (Living area)	1081	Coordinate Polygon Area Algorithm using inches $-((672.5 + 672.5) * (233.9 - 313.1) + (672.5 + 526.7) * (313.1 - 313.1) + (526.7 + 526.7) * (313.1 - 540.8) + (526.7 + 218.5) * (540.8 - 540.8) + (218.5 + 180.1) * (540.8 - 570) + (180.1 + 123.2) * (570 - 570) + (123.2 + 80.6) * (570 - 540.8) + (80.6 + 66.2) * (540.8 - 540.8) + (66.2 + 66.2) * (540.8 - 233.9) + (66.2 + 672.5) * (233.9 - 233.9)) * 0.5 * 0.00694$
PORCH (Non-living area)	39	$-((337.4 + 337.4) * (540.8 - 595.6) + (337.4 + 234.6) * (595.6 - 595.6) + (234.6 + 234.6) * (595.6 - 540.8) + (234.6 + 337.4) * (540.8 - 540.8)) * 0.5 * 0.00694$
SCREENED PORCH (Non-living area)	199	$-((401.1 + 401.1) * (74.7 - 233.9) + (401.1 + 221.3) * (233.9 - 233.9) + (221.3 + 221.3) * (233.9 - 74.7) + (221.3 + 401.1) * (74.7 - 74.7)) * 0.5 * 0.00694$
DECK (Non-living area)	252	$-((612.2 + 632.9) * (70.6 - 90.7) + (632.9 + 632.9) * (90.7 - 197.4) + (632.9 + 638.8) * (197.4 - 197.4) + (638.8 + 638.8) * (197.4 - 233.9) + (638.8 + 411.1) * (233.9 - 233.9) + (411.1 + 411.1) * (233.9 - 70.6) + (411.1 + 612.2) * (70.6 - 70.6)) * 0.5 * 0.00694$

14 Soundview Loop, South Salem, NY, United States

Gross Living Area: 2409 sq. ft

Space	Area (sq. ft)	Calculation <small>Coordinate Polygon Area Algorithm using inches</small>
GARAGE (Non-living area)	458	$-\left(\left(779.4 + 779.4\right) * \left(233.9 - 540.8\right) + \left(779.4 + 526.7\right) * \left(540.8 - 540.8\right) + \left(526.7 + 526.7\right) * \left(540.8 - 313.1\right) + \left(526.7 + 672.5\right) * \left(313.1 - 313.1\right) + \left(672.5 + 672.5\right) * \left(313.1 - 233.9\right) + \left(672.5 + 779.4\right) * \left(233.9 - 233.9\right)\right) * 0.5 * 0.00694$

14 Soundview Loop, South Salem, NY, United States

Gross Living Area: 2409 sq. ft



Space	Area (sq. ft)	Calculation
FLOOR 3 (Living area)	1328	Coordinate Polygon Area Algorithm using inches $-((533.6 + 533.6) * (67.8 - 79.2) + (533.6 + 759.8) * (79.2 - 79.2) + (759.8 + 759.8) * (79.2 - 136.3) + (759.8 + 749.8) * (136.3 - 146.3) + (749.8 + 749.8) * (146.3 - 179.9) + (749.8 + 785.4) * (179.9 - 179.9) + (785.4 + 785.4) * (179.9 - 296.1) + (785.4 + 675) * (296.1 - 296.1) + (675 + 675) * (296.1 - 329) + (675 + 625.4) * (329 - 329) + (625.4 + 625.4) * (329 - 296.4) + (625.4 + 529.5) * (296.4 - 296.4) + (529.5 + 529.5) * (296.4 - 319) + (529.5 + 533.6) * (319 - 329) + (533.6 + 533.6) * (329 - 381.8) + (533.6 + 62.9) * (381.8 - 381.8) + (62.9 + 62.9) * (381.8 - 133.6) + (62.9 + 211.3) * (133.6 - 133.6) + (211.3 + 211.3) * (133.6 - 67.8) + (211.3 + 533.6) * (67.8 - 67.8)) * 0.5 * 0.00694$
LOW CEILING (Non-living area)	22	$-((625.4 + 625.4) * (296.4 - 329) + (625.4 + 533.6) * (329 - 329) + (533.6 + 529.5) * (329 - 319) + (529.5 + 529.5) * (319 - 296.4) + (529.5 + 625.4) * (296.4 - 296.4)) * 0.5 * 0.00694$
LOW CEILING (Non-living area)	25	$-((785.4 + 785.4) * (296.1 - 329) + (785.4 + 675) * (329 - 329) + (675 + 675) * (329 - 296.1) + (675 + 785.4) * (296.1 - 296.1)) * 0.5 * 0.00694$
LOW CEILING (Non-living area)	10	$-((785.4 + 785.4) * (136.3 - 179.9) + (785.4 + 749.8) * (179.9 - 179.9) + (749.8 + 749.8) * (179.9 - 146.3) + (749.8 + 759.8) * (146.3 - 136.3) + (759.8 + 785.4) * (136.3 - 136.3)) * 0.5 * 0.00694$