

Home report

Sterling Terrace 17602
Redington Shores

Highlights



1 Kitchen



1 Living room



2 Bedroom



2 Bath



11 Doors



17 Windows

Nearby services Data source: Google Maps



Gulf Blvd + 175th Ave E, 0.4 mi



B S Food & Gas, 1.7 mi



AFC Urgent Care Seminole, 2.0 mi



Four Seasons Preschool of Seminole, 1.1 mi

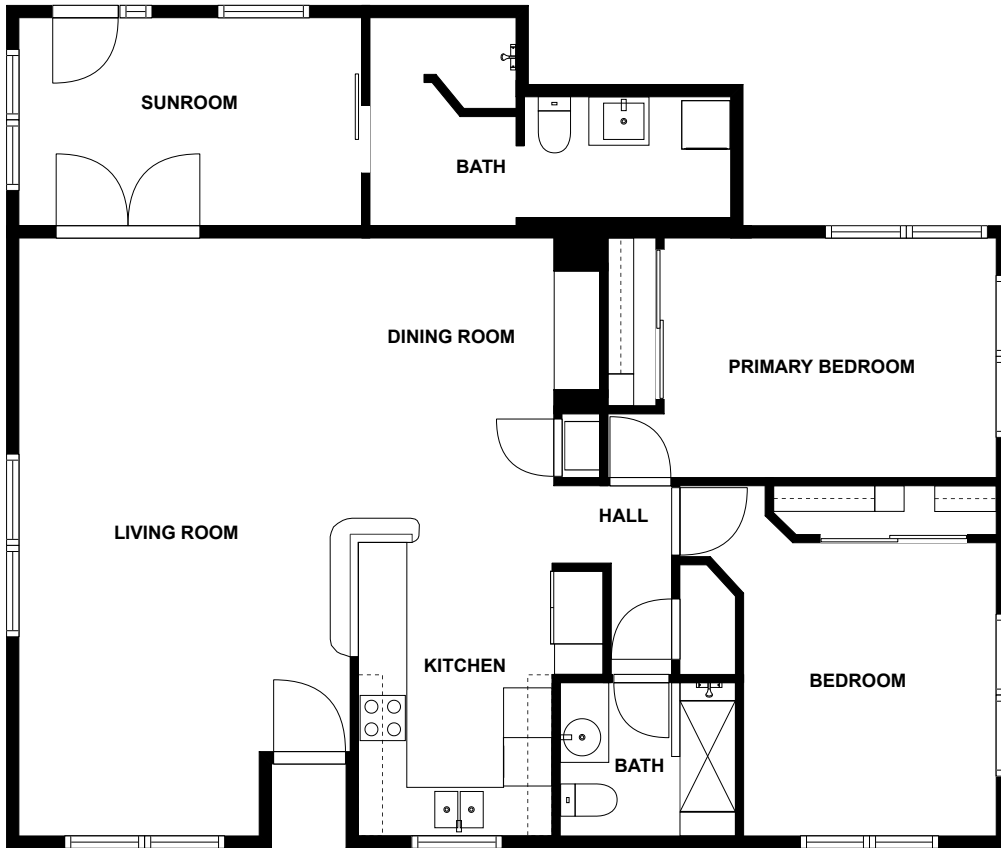


Stans Epicurean, 0.4 mi



Bay Pines VA Hospital Helipad, 2.7 mi

Floor plan



fvm

SIZES AND DIMENSIONS ARE APPROXIMATE, ACTUAL MAY VARY.



Appendix 1: Data sheet

Bath - 2	Bedroom - 2	Bedroom - Master - 1
Room - 1	Room - Glass - 1	Hall - 1
Kitchen - 1	LivingRoom - 1	Dining - 1