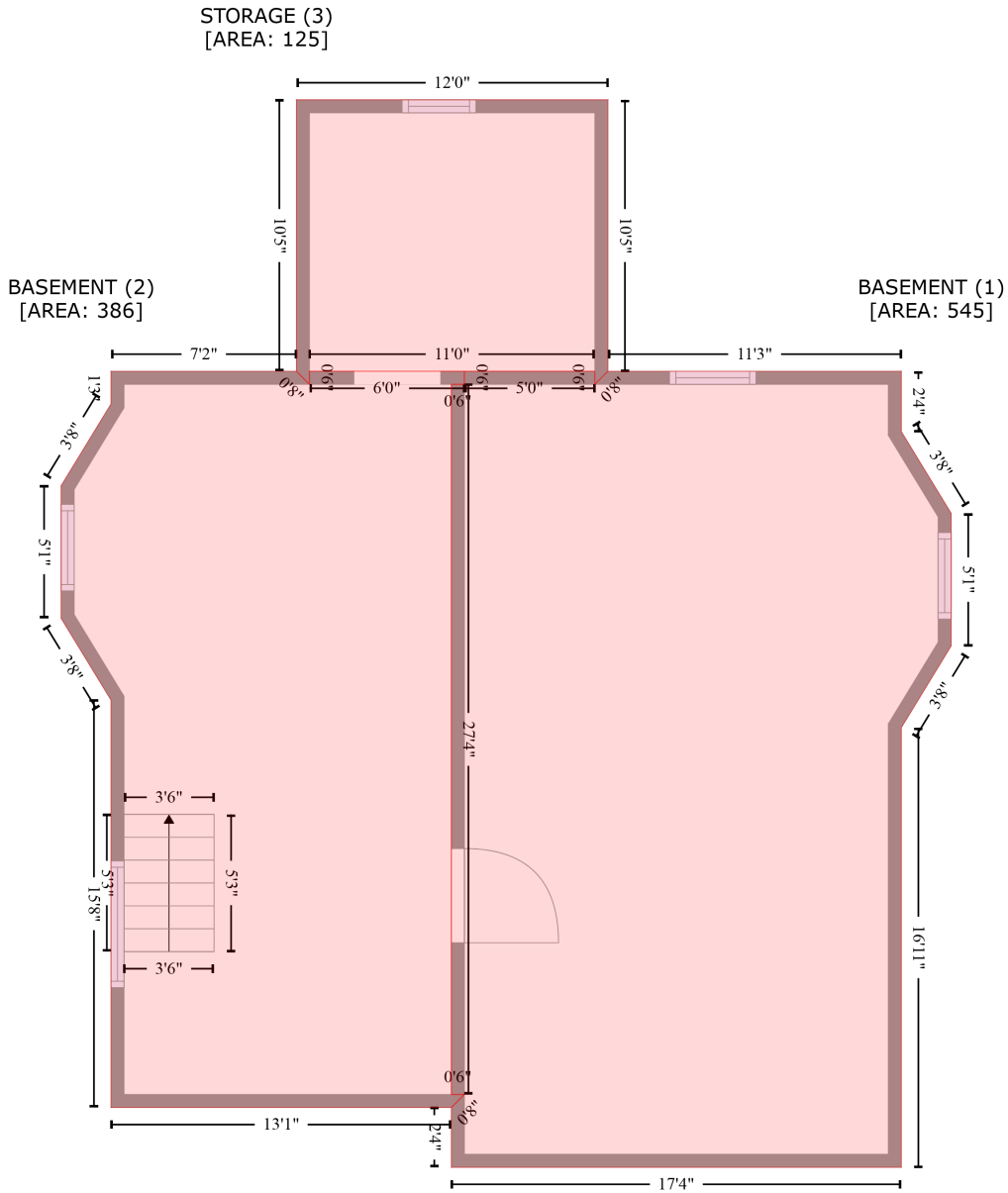


1207 W Church St, Champaign, Illinois, United States

Gross Living Area: 2519 sq. ft



Space	Area (sq. ft)	Calculation <small>Coordinate Polygon Area Algorithm using inches</small>
BASEMENT (Non-living area)	545	$ \begin{aligned} & -((265 + 265) * (122.7 - 128.7) + (265 + 271) * (128.7 - 122.7) + (271 + 406.4) * (122.7 - 122.7) + \\ & (406.4 + 406.4) * (122.7 - 150.6) + (406.4 + 429.4) * (150.6 - 188.3) + (429.4 + 429.4) * (188.3 - \\ & 249.4) + (429.4 + 406.4) * (249.4 - 287.1) + (406.4 + 406.4) * (287.1 - 489.9) + (406.4 + 198.7) * \\ & (489.9 - 489.9) + (198.7 + 198.7) * (489.9 - 462.3) + (198.7 + 204.7) * (462.3 - 456.3) + (204.7 + \\ & 198.7) * (456.3 - 456.3) + (198.7 + 198.7) * (456.3 - 128.7) + (198.7 + 204.7) * (128.7 - 128.7) + \\ & (204.7 + 204.7) * (128.7 - 122.7) + (204.7 + 265) * (122.7 - 122.7)) * 0.5 * 0.00694 \end{aligned} $

1207 W Church St, Champaign, Illinois, United States

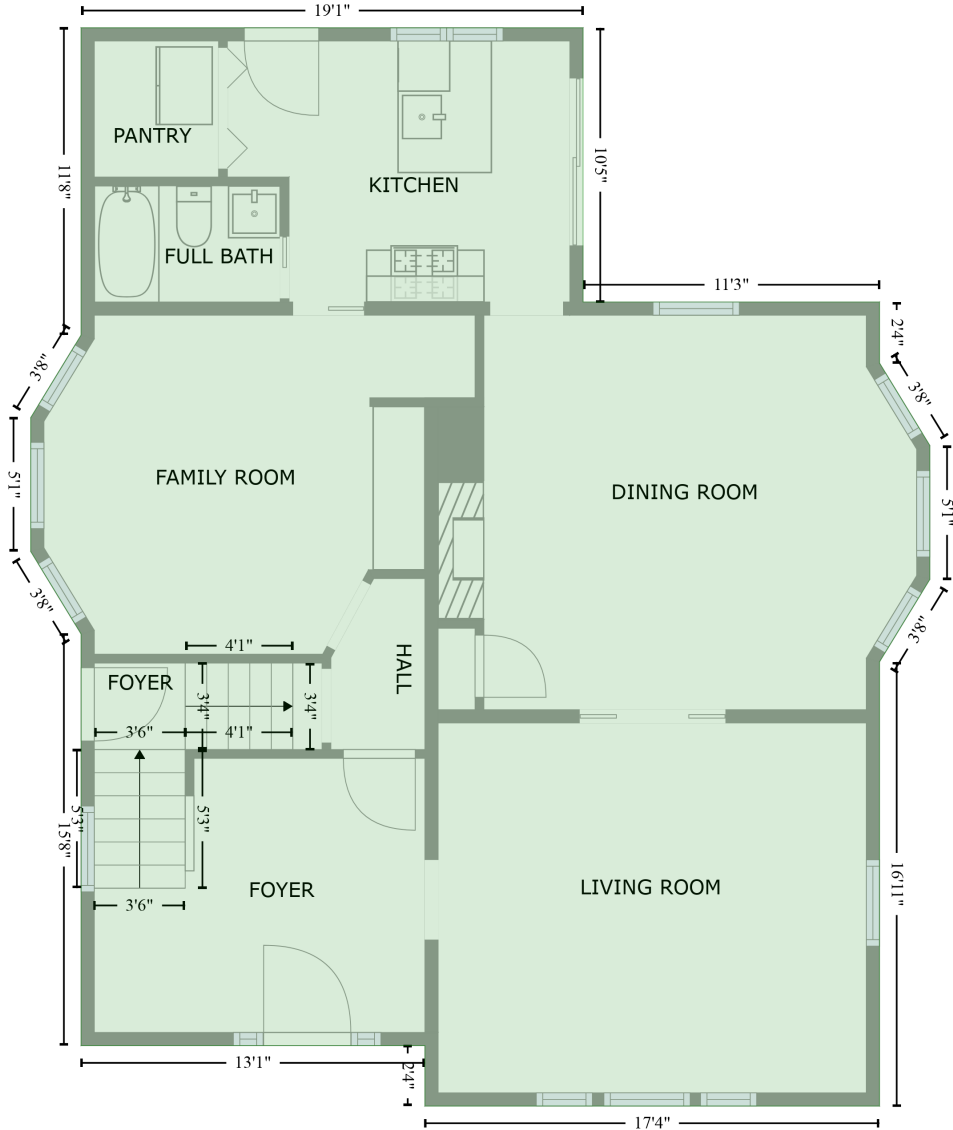
Gross Living Area: 2519 sq. ft

Space	Area (sq. ft)	Calculation <small>Coordinate Polygon Area Algorithm using inches</small>
BASEMENT (Non-living area)	386	$-\left((127.2 + 133.2) * (122.7 - 128.7) + (133.2 + 133.2) * (128.7 - 122.7) + (133.2 + 204.7) * (122.7 - 122.7) + (204.7 + 204.7) * (122.7 - 128.7) + (204.7 + 198.7) * (128.7 - 128.7) + (198.7 + 198.7) * (128.7 - 456.3) + (198.7 + 204.7) * (456.3 - 456.3) + (204.7 + 198.7) * (456.3 - 462.3) + (198.7 + 41.6) * (462.3 - 462.3) + (41.6 + 41.6) * (462.3 - 274.4) + (41.6 + 18.6) * (274.4 - 236.7) + (18.6 + 18.6) * (236.7 - 175.6) + (18.6 + 41.6) * (175.6 - 137.9) + (41.6 + 41.6) * (137.9 - 122.7) + (41.6 + 127.2) * (122.7 - 122.7)\right) * 0.5 * 0.00694$
STORAGE (Non-living area)	125	$-\left((271 + 271) * (-2.5 - 122.7) + (271 + 265) * (122.7 - 128.7) + (265 + 265) * (128.7 - 122.7) + (265 + 133.2) * (122.7 - 122.7) + (133.2 + 133.2) * (122.7 - 128.7) + (133.2 + 127.2) * (128.7 - 122.7) + (127.2 + 127.2) * (122.7 - -2.5) + (127.2 + 271) * (-2.5 - -2.5)\right) * 0.5 * 0.00694$

1207 W Church St, Champaign, Illinois, United States

Gross Living Area: 2519 sq. ft

FLOOR 2
[AREA: 1131]

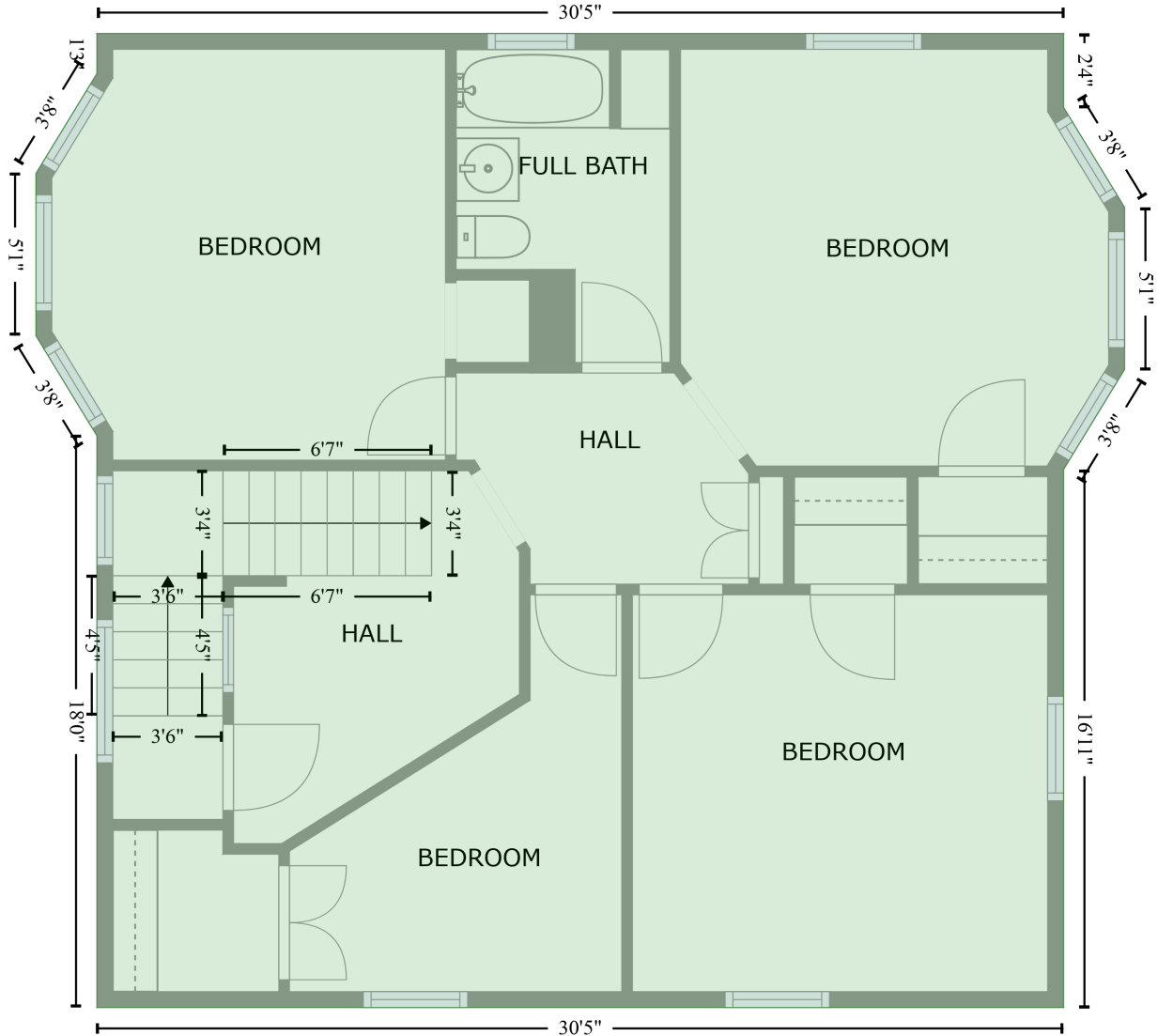


Space	Area (sq. ft)	Calculation <small>Coordinate Polygon Area Algorithm using inches</small>
FLOOR 2 (Living area)	1131	$ \begin{aligned} & -((41.6 + 271) * (-2.5 - -2.5) + (271 + 271) * (-2.5 - 122.7) + (271 + 406.4) * (122.7 - 122.7) + \\ & (406.4 + 406.4) * (122.7 - 150.6) + (406.4 + 429.4) * (150.6 - 188.3) + (429.4 + 429.4) * (188.3 - \\ & 249.4) + (429.4 + 406.4) * (249.4 - 287.1) + (406.4 + 406.4) * (287.1 - 489.9) + (406.4 + 198.7) * \\ & (489.9 - 489.9) + (198.7 + 198.7) * (489.9 - 462.3) + (198.7 + 41.6) * (462.3 - 462.3) + (41.6 + \\ & 41.6) * (462.3 - 274.4) + (41.6 + 18.6) * (274.4 - 236.7) + (18.6 + 18.6) * (236.7 - 175.6) + (18.6 + \\ & 41.6) * (175.6 - 137.9) + (41.6 + 41.6) * (137.9 - -2.5)) * 0.5 * 0.00694 \end{aligned} $

1207 W Church St, Champaign, Illinois, United States

Gross Living Area: 2519 sq. ft

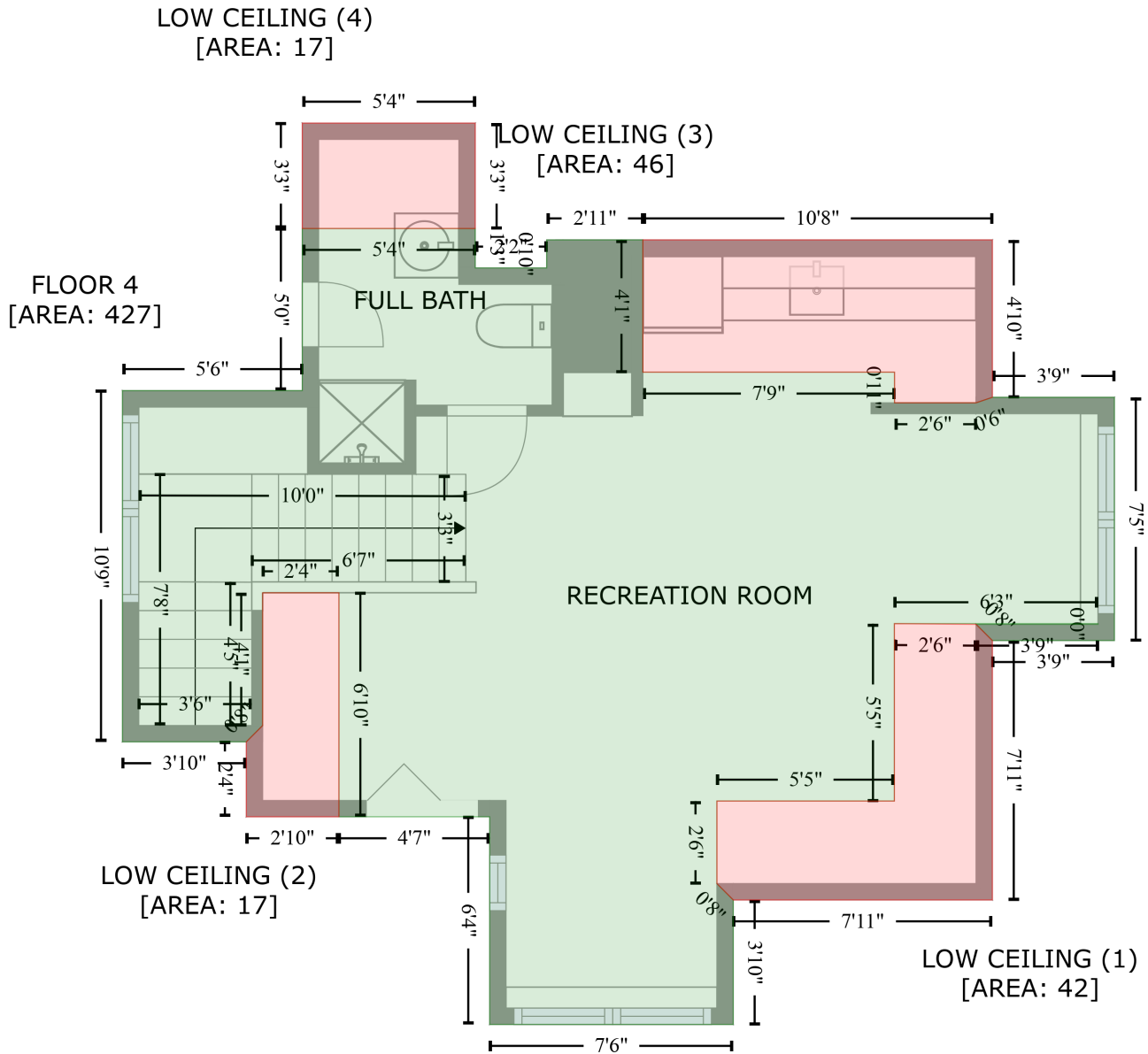
FLOOR 3
[AREA: 961]



Space	Area (sq. ft)	Calculation <small>Coordinate Polygon Area Algorithm using inches</small>
FLOOR 3 (Living area)	961	$ \begin{aligned} & -((406.4 + 406.4) * (122.7 - 150.6) + (406.4 + 429.4) * (150.6 - 188.3) + (429.4 + 429.4) * (188.3 - \\ & 249.4) + (429.4 + 406.4) * (249.4 - 287.1) + (406.4 + 406.4) * (287.1 - 489.9) + (406.4 + 41.6) * \\ & (489.9 - 489.9) + (41.6 + 41.6) * (489.9 - 274.4) + (41.6 + 18.6) * (274.4 - 236.7) + (18.6 + 18.6) * \\ & (236.7 - 175.6) + (18.6 + 41.6) * (175.6 - 137.9) + (41.6 + 41.6) * (137.9 - 122.7) + (41.6 + 406.4) \\ & * (122.7 - 122.7)) * 0.5 * 0.00694 \end{aligned} $

1207 W Church St, Champaign, Illinois, United States

Gross Living Area: 2519 sq. ft



Space	Area (sq. ft)	Calculation <small>Coordinate Polygon Area Algorithm using inches</small>
FLOOR 4 (Living area)	427	$ \begin{aligned} & -((171.4 + 171.4) * (197.2 - 211.7) + (171.4 + 197.6) * (211.7 - 211.7) + (197.6 + 197.6) * (211.7 - \\ & 201.3) + (197.6 + 233) * (201.3 - 201.3) + (233 + 233) * (201.3 - 250) + (233 + 325.6) * (250 - \\ & 250) + (325.6 + 325.6) * (250 - 261.2) + (325.6 + 355.5) * (261.2 - 261.2) + (355.5 + 361.5) * \\ & (261.2 - 259.2) + (361.5 + 406.4) * (259.2 - 259.2) + (406.4 + 406.4) * (259.2 - 348.7) + (406.4 + \\ & 361.5) * (348.7 - 348.7) + (361.5 + 355.5) * (348.7 - 342.7) + (355.5 + 400.4) * (342.7 - 342.7) + \\ & (400.4 + 400.4) * (342.7 - 342.5) + (400.4 + 325.5) * (342.5 - 342.5) + (325.5 + 325.5) * (342.5 - \\ & 407.7) + (325.5 + 260.2) * (407.7 - 407.7) + (260.2 + 260.2) * (407.7 - 438.1) + (260.2 + 266.2) * \end{aligned} $

1207 W Church St,Champaign,Illinois,United States

Gross Living Area: 2519 sq. ft

Space	Area (sq. ft)	Calculation <small>Coordinate Polygon Area Algorithm using inches</small>
		$(438.1 - 444.1) + (266.2 + 266.2) * (444.1 - 489.9) + (266.2 + 176.7) * (489.9 - 489.9) + (176.7 + 176.7) * (489.9 - 413.5) + (176.7 + 121.2) * (413.5 - 413.5) + (121.2 + 121.2) * (413.5 - 331.1) + (121.2 + 93.2) * (331.1 - 331.1) + (93.2 + 93.2) * (331.1 - 379.9) + (93.2 + 87.2) * (379.9 - 385.9) + (87.2 + 41.6) * (385.9 - 385.9) + (41.6 + 41.6) * (385.9 - 256.8) + (41.6 + 107.8) * (256.8 - 256.8) + (107.8 + 107.8) * (256.8 - 197.2) + (107.8 + 171.4) * (197.2 - 197.2) * 0.5 * 0.00694$
LOW CEILING (Non-living area)	42	$-((325.5 + 355.5) * (342.5 - 342.7) + (355.5 + 361.5) * (342.7 - 348.7) + (361.5 + 361.5) * (348.7 - 444.1) + (361.5 + 266.2) * (444.1 - 444.1) + (266.2 + 260.2) * (444.1 - 438.1) + (260.2 + 260.2) * (438.1 - 407.7) + (260.2 + 325.5) * (407.7 - 407.7) + (325.5 + 325.5) * (407.7 - 342.5)) * 0.5 * 0.00694$
LOW CEILING (Non-living area)	17	$-((121.2 + 121.2) * (331.1 - 413.5) + (121.2 + 87.2) * (413.5 - 413.5) + (87.2 + 87.2) * (413.5 - 385.9) + (87.2 + 93.2) * (385.9 - 379.9) + (93.2 + 93.2) * (379.9 - 331.1) + (93.2 + 121.2) * (331.1 - 331.1)) * 0.5 * 0.00694$
LOW CEILING (Non-living area)	46	$-((361.5 + 361.5) * (201.3 - 259.2) + (361.5 + 355.5) * (259.2 - 261.2) + (355.5 + 325.6) * (261.2 - 261.2) + (325.6 + 325.6) * (261.2 - 250) + (325.6 + 233) * (250 - 250) + (233 + 233) * (250 - 201.3) + (233 + 361.5) * (201.3 - 201.3)) * 0.5 * 0.00694$
LOW CEILING (Non-living area)	17	$-((171.4 + 171.4) * (158.4 - 197.2) + (171.4 + 107.8) * (197.2 - 197.2) + (107.8 + 107.8) * (197.2 - 158.4) + (107.8 + 171.4) * (158.4 - 158.4)) * 0.5 * 0.00694$