


Home report

427 Preston Drive, Meridian, Butler, Butler County, Pennsylvania, United States, 16001



Property summary

 **1** Garages

 **4** Bedrooms

 **1** Bathrooms

 **1** Half baths

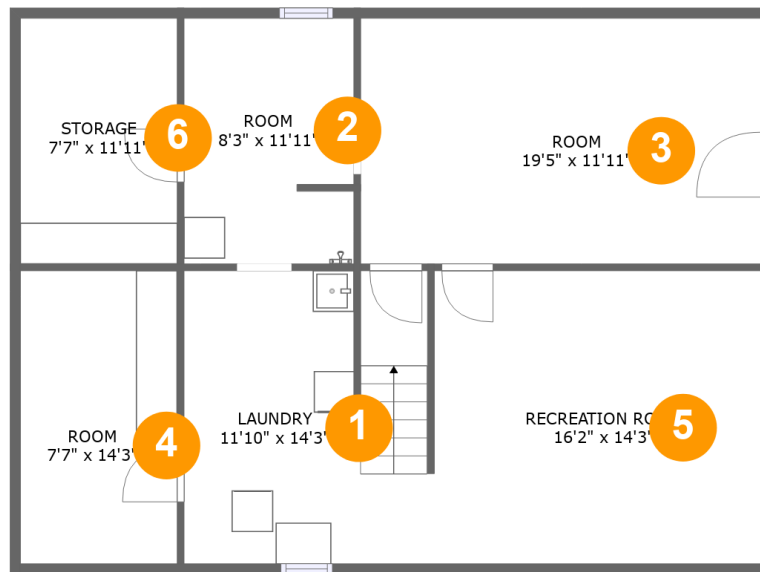
 **3** Floors

 **1,780** Gross living area sqft

 **3,925** Total sqft

Home report

427 Preston Drive, Meridian, Butler, Butler County,
Pennsylvania, United States, 16001



Room dimensions

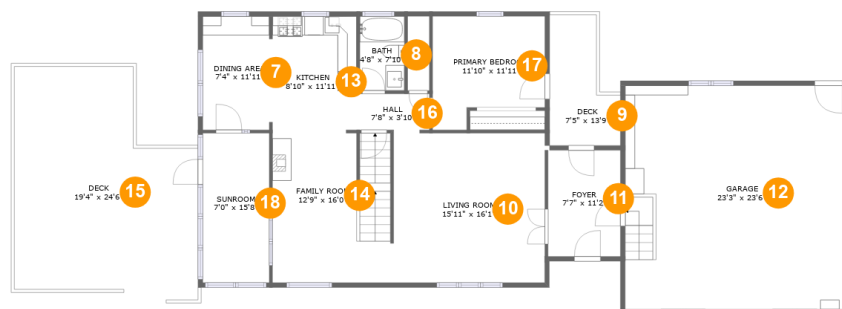
Floor 1

Total sqft: 1015 Living area: 0

#		Dimensions	sqft	Counted as living area
1	Laundry	11'10" x 14'3"	165 sq. ft	No
2	Room	8'3" x 11'11"	97 sq. ft	No
3	Room	19'5" x 11'11"	232 sq. ft	No
4	Room	7'7" x 14'3"	108 sq. ft	No
5	Recreation Room	16'2" x 14'3"	227 sq. ft	No
6	Storage	7'7" x 11'11"	91 sq. ft	No

Scan captured on Sun, 09 Mar 2025 20:42:02 GMT

Information is calculated by **LIDAR** technology deemed highly reliable but not guaranteed.



Room dimensions

Floor 2

Total sqft: 2238 Living area: 1168

#		Dimensions	sqft	Counted as living area
7	Dining Area	7'4" x 11'11"	86 sq. ft	Yes
8	Bath	4'8" x 7'10"	37 sq. ft	Yes
9	Deck	7'5" x 13'9"	81 sq. ft	No
10	Living Room	15'11" x 16'1"	251 sq. ft	Yes
11	Foyer	7'7" x 11'2"	85 sq. ft	Yes
12	Garage	23'3" x 23'6"	546 sq. ft	No
13	Kitchen	8'10" x 11'11"	106 sq. ft	Yes
14	Family Room	12'9" x 16'0"	196 sq. ft	Yes
15	Deck	19'4" x 24'6"	402 sq. ft	No
16	Hall	7'8" x 3'10"	29 sq. ft	Yes
17	Primary Bedroom	11'10" x 11'11"	122 sq. ft	Yes

Scan captured on Sun, 09 Mar 2025 20:42:02 GMT

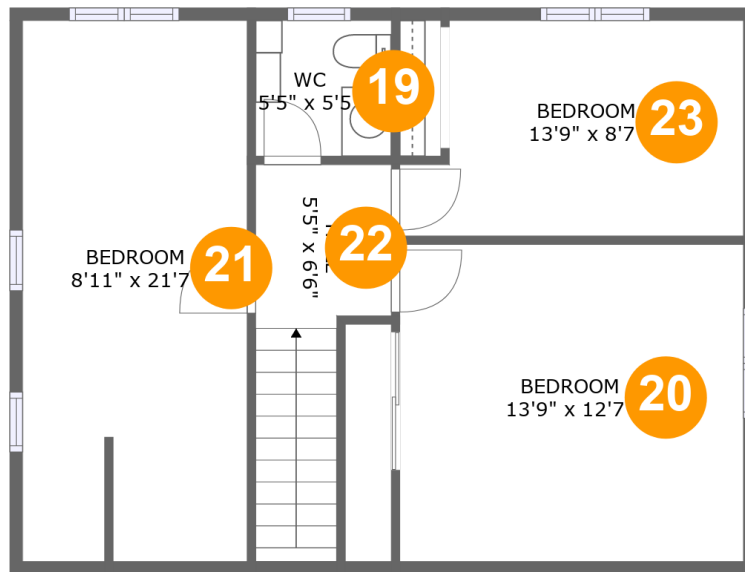
Information is calculated by **LIDAR** technology deemed highly reliable but not guaranteed.

Home report

**427 Preston Drive, Meridian, Butler, Butler County,
Pennsylvania, United States, 16001**



#		Dimensions	sqft	Counted as living area
18	Sunroom	7'0" x 15'8"	110 sq. ft	Yes



Room dimensions

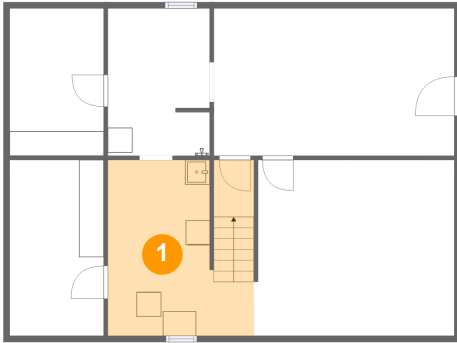
Floor 3

Total sqft: 672

Living area: 612

#		Dimensions	sqft	Counted as living area
19	WC	5'5" x 5'5"	29 sq. ft	Yes
20	Bedroom	13'9" x 12'7"	146 sq. ft	Yes
21	Bedroom	8'11" x 21'7"	174 sq. ft	Yes
22	Hall	5'5" x 6'6"	64 sq. ft	Yes
23	Bedroom	13'9" x 8'7"	106 sq. ft	Yes

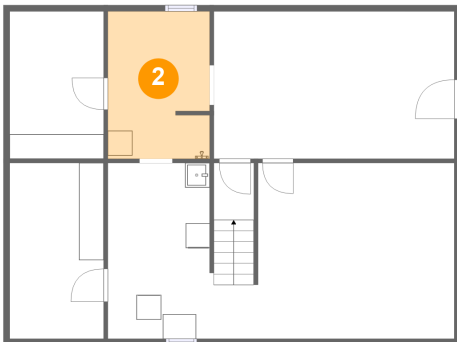
1 Floor 1 - Laundry



Dimensions: 11'10" x 14'3"
Area: 165 sq. ft
Counted as living area: No

Heated: Yes
Finished: No
Enclosed: Yes
Contiguous: Yes
Permitted: Yes
Wet space: No
Addition: No
Conversion: No

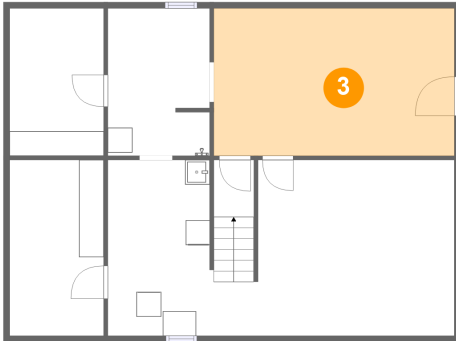
2 Floor 1 - Room



Dimensions: 8'3" x 11'11"
Area: 97 sq. ft
Counted as living area: No

Heated: Yes
Finished: Yes
Enclosed: Yes
Contiguous: No
Permitted: Yes
Wet space: No
Addition: No
Conversion: No

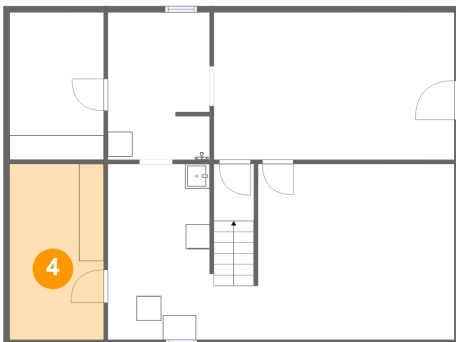
3 Floor 1 - Room



Dimensions: 19'5" x 11'11"
Area: 232 sq. ft
Counted as living area: No

Heated: Yes
Finished: No
Enclosed: Yes
Contiguous: Yes
Permitted: Yes
Wet space: No
Addition: No
Conversion: No

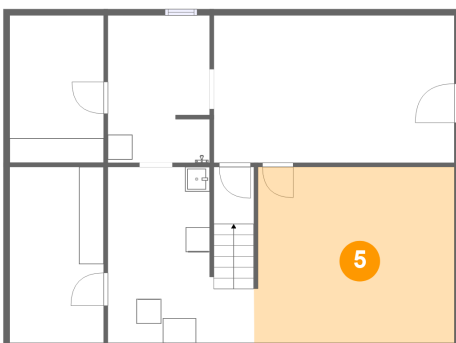
4 Floor 1 - Room



Dimensions: 7'7" x 14'3"
Area: 108 sq. ft
Counted as living area: No

Heated: Yes
Finished: No
Enclosed: Yes
Contiguous: Yes
Permitted: Yes
Wet space: No
Addition: No
Conversion: No

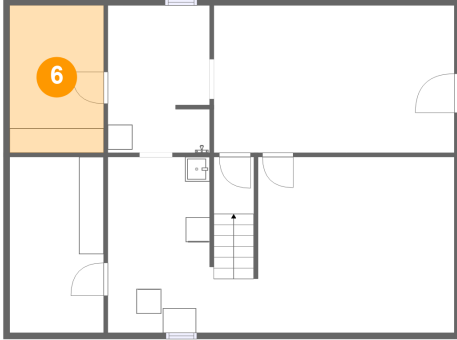
5 Floor 1 - Recreation Room



Dimensions: 16'2" x 14'3"
Area: 227 sq. ft
Counted as living area: No

Heated: Yes
Finished: No
Enclosed: Yes
Contiguous: Yes
Permitted: Yes
Wet space: No
Addition: No
Conversion: No

6 Floor 1 - Storage



Dimensions: 7'7" x 11'11"
Area: 91 sq. ft
Counted as living area: No

Heated: No
Finished: No
Enclosed: No
Contiguous: Yes
Permitted: Yes
Wet space: No
Addition: No
Conversion: No

7 Floor 2 - Dining Area



Dimensions: 7'4" x 11'11"
Area: 86 sq. ft
Counted as living area: Yes

Heated: Yes
Finished: Yes
Enclosed: Yes
Contiguous: Yes
Permitted: Yes
Wet space: No
Addition: No
Conversion: No

8 Floor 2 - Bath



Dimensions: 4'8" x 7'10"
Area: 37 sq. ft
Counted as living area: Yes

Heated: Yes
Finished: Yes
Enclosed: Yes
Contiguous: Yes
Permitted: Yes
Wet space: Yes
Addition: No
Conversion: No

9 Floor 2 - Deck



Dimensions: 7'5" x 13'9"
Area: 81 sq. ft
Counted as living area: No

Heated: No
Finished: Yes
Enclosed: No
Contiguous: Yes
Permitted: Yes
Wet space: No
Addition: No
Conversion: No

10 Floor 2 - Living Room



Dimensions: 15'11" x 16'1"
Area: 251 sq. ft
Counted as living area: Yes

Heated: Yes
Finished: Yes
Enclosed: Yes
Contiguous: Yes
Permitted: Yes
Wet space: No
Addition: No
Conversion: No

11 Floor 2 - Foyer



Dimensions: 7'7" x 11'2"
Area: 85 sq. ft
Counted as living area: Yes

Heated: Yes
Finished: Yes
Enclosed: Yes
Contiguous: Yes
Permitted: Yes
Wet space: No
Addition: No
Conversion: No

12 Floor 2 - Garage



Dimensions: 23'3" x 23'6"
Area: 546 sq. ft
Counted as living area: No

Heated: No
Finished: No
Enclosed: Yes
Contiguous: Yes
Permitted: Yes
Wet space: No
Addition: No
Conversion: No

13 Floor 2 - Kitchen



Dimensions: 8'10" x 11'11"
Area: 106 sq. ft
Counted as living area: Yes

Heated: Yes
Finished: Yes
Enclosed: Yes
Contiguous: Yes
Permitted: Yes
Wet space: No
Addition: No
Conversion: No

14 Floor 2 - Family Room



Dimensions: 12'9" x 16'0"
Area: 196 sq. ft
Counted as living area: Yes

Heated: Yes
Finished: Yes
Enclosed: Yes
Contiguous: Yes
Permitted: Yes
Wet space: No
Addition: No
Conversion: No

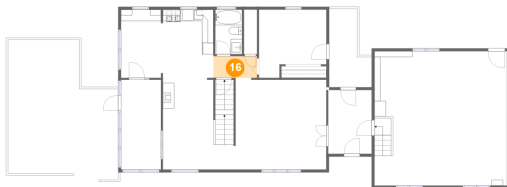
15 Floor 2 - Deck



Dimensions: 19'4" x 24'6"
Area: 402 sq. ft
Counted as living area: No

Heated: No
Finished: Yes
Enclosed: No
Contiguous: Yes
Permitted: Yes
Wet space: No
Addition: No
Conversion: No

16 Floor 2 - Hall



Dimensions: 7'8" x 3'10"
Area: 29 sq. ft
Counted as living area: Yes

Heated: Yes
Finished: Yes
Enclosed: Yes
Contiguous: Yes
Permitted: Yes
Wet space: No
Addition: No
Conversion: No

17 Floor 2 - Primary Bedroom



Dimensions: 11'10" x 11'11"
Area: 122 sq. ft
Counted as living area: Yes

Heated: Yes
Finished: Yes
Enclosed: Yes
Contiguous: Yes
Permitted: Yes
Wet space: No
Addition: No
Conversion: No

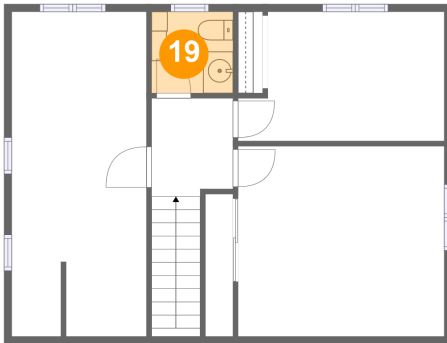
18 Floor 2 - Sunroom



Dimensions: 7'0" x 15'8"
Area: 110 sq. ft
Counted as living area: Yes

Heated: Yes
Finished: Yes
Enclosed: Yes
Contiguous: Yes
Permitted: Yes
Wet space: No
Addition: No
Conversion: No

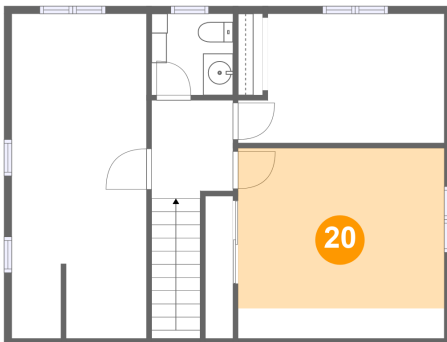
19 Floor 3 - WC



Dimensions: 5'5" x 5'5"
Area: 29 sq. ft
Counted as living area: Yes

Heated: Yes
Finished: Yes
Enclosed: Yes
Contiguous: Yes
Permitted: Yes
Wet space: Yes
Addition: No
Conversion: No

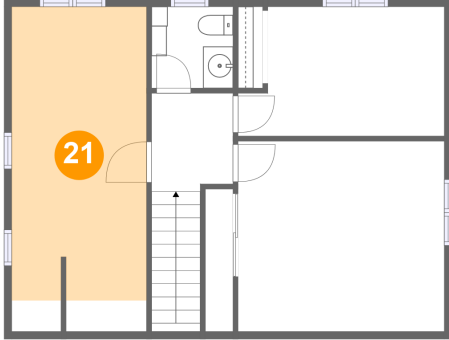
20 Floor 3 - Bedroom



Dimensions: 13'9" x 12'7"
Area: 146 sq. ft
Counted as living area: Yes

Heated: Yes
Finished: Yes
Enclosed: Yes
Contiguous: Yes
Permitted: Yes
Wet space: No
Addition: No
Conversion: No

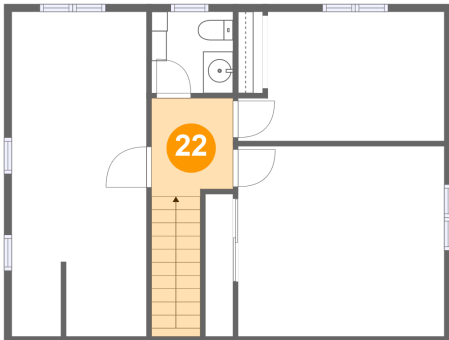
21 Floor 3 - Bedroom



Dimensions: 8'11" x 21'7"
Area: 174 sq. ft
Counted as living area: Yes

Heated: Yes
Finished: Yes
Enclosed: Yes
Contiguous: Yes
Permitted: Yes
Wet space: No
Addition: No
Conversion: No

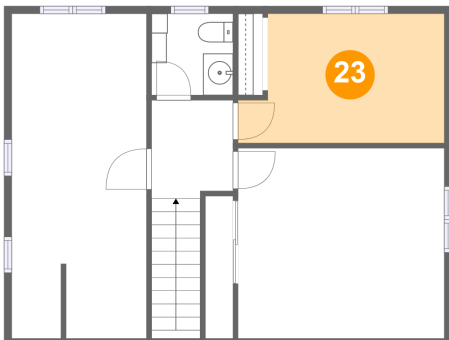
22 Floor 3 - Hall



Dimensions: 5'5" x 6'6"
Area: 64 sq. ft
Counted as living area: Yes

Heated: Yes
Finished: Yes
Enclosed: Yes
Contiguous: Yes
Permitted: Yes
Wet space: No
Addition: No
Conversion: No

23 Floor 3 - Bedroom



Dimensions: 13'9" x 8'7"
Area: 106 sq. ft
Counted as living area: Yes

Heated: Yes
Finished: Yes
Enclosed: Yes
Contiguous: Yes
Permitted: Yes
Wet space: No
Addition: No
Conversion: No