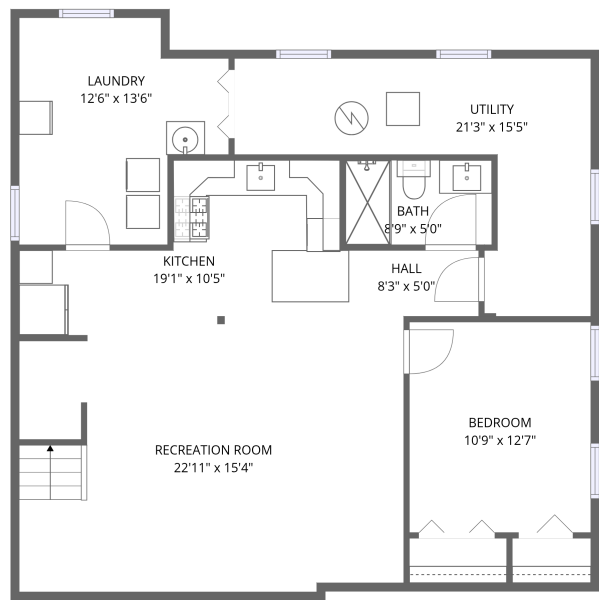
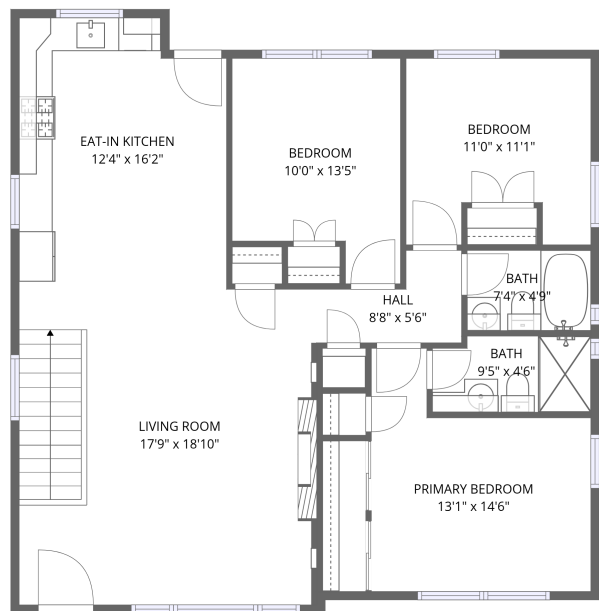


Home report

8836 Sayre Ave,Morton Grove,IL,US



FLOOR 1



FLOOR 2

Total Area: 1894 sq. ft

Floor 1: 776 sq. ft, Floor 2: 1118 sq. ft

Excluded: Utility 181 sq. ft, Laundry 140 sq. ft, Walls: 138 sq. ft

Property summary

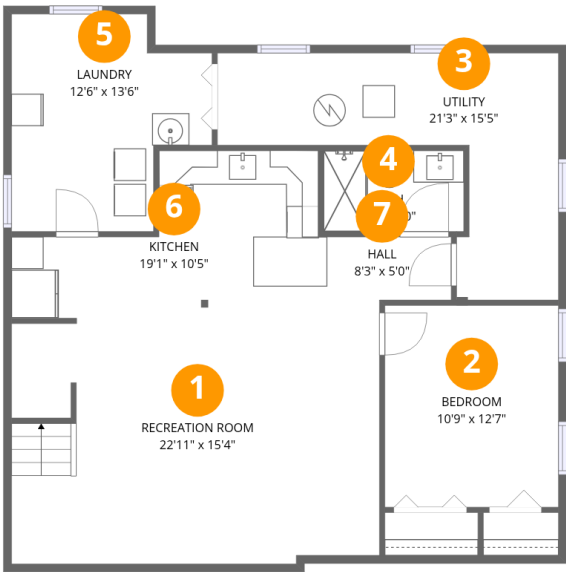
 **2** Floors

 **4** Bedrooms

 **3** Bathrooms

Home report

8836 Sayre Ave,Morton Grove,IL,US



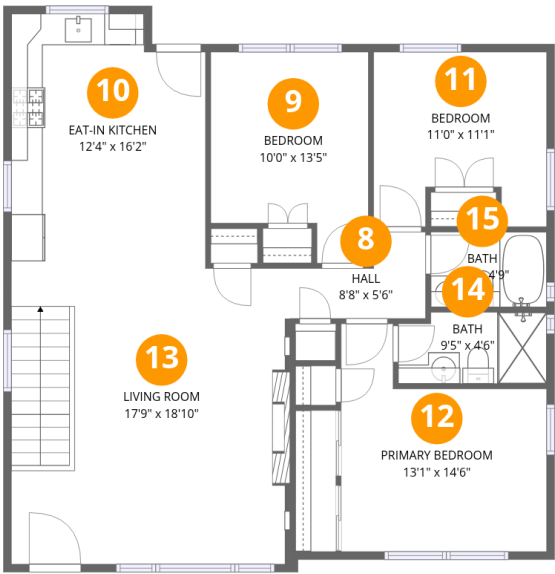
Room dimensions

Floor 1 Total:776sqft Excluded: 321sqft

#		Max Dimensions	sqft	Included
1	Recreation Room	22'11" x 15'4"	346 sq. ft	Yes
2	Bedroom	10'9" x 12'7"	136 sq. ft	Yes
3	Utility	21'3" x 15'5"	179 sq. ft	No
4	Bath	8'9" x 5'0"	44 sq. ft	Yes
5	Laundry	12'6" x 13'6"	140 sq. ft	No
6	Kitchen	19'1" x 10'5"	149 sq. ft	Yes
7	Hall	8'3" x 5'0"	37 sq. ft	Yes

Home report

8836 Sayre Ave,Morton Grove,IL,US

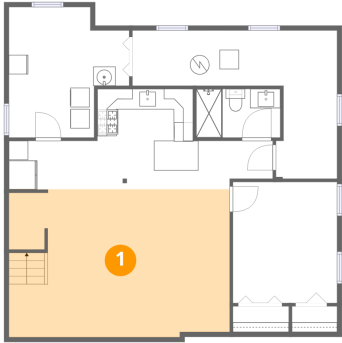


Room dimensions

Floor 2 Total:1118sqft Excluded: 0sqft

#		Max Dimensions	sqft	Included
8	Hall	8'8" x 5'6"	35 sq. ft	Yes
9	Bedroom	10'0" x 13'5"	118 sq. ft	Yes
10	Eat-in Kitchen	12'4" x 16'2"	191 sq. ft	Yes
11	Bedroom	11'0" x 11'1"	110 sq. ft	Yes
12	Primary Bedroom	13'1" x 14'6"	149 sq. ft	Yes
13	Living Room	17'9" x 18'10"	334 sq. ft	Yes
14	Bath	9'5" x 4'6"	41 sq. ft	Yes
15	Bath	7'4" x 4'9"	35 sq. ft	Yes

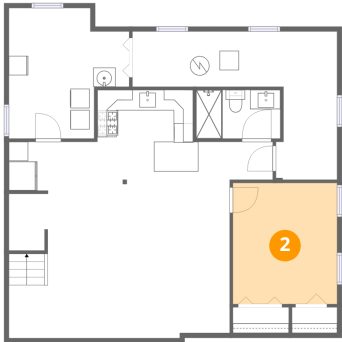
1 Floor 1 - Recreation Room



Max Dimensions: 22'11" x 15'4"
Calculated Area: 346 sq. ft
Included: Yes

Heated: Yes
Finished: Yes
Enclosed: Yes
Contiguous: Yes
Permitted: Yes
Wet space: No
Addition: No
Conversion: No

2 Floor 1 - Bedroom



Max Dimensions: 10'9" x 12'7"
Calculated Area: 136 sq. ft
Included: Yes

Heated: Yes
Finished: Yes
Enclosed: Yes
Contiguous: Yes
Permitted: Yes
Wet space: No
Addition: No
Conversion: No

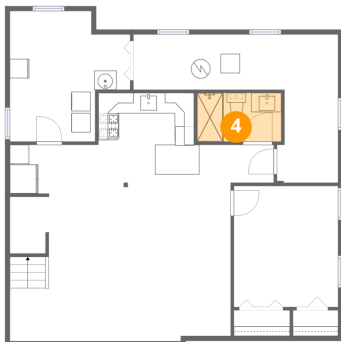
3 Floor 1 - Utility



Max Dimensions: 21'3" x 15'5"
Calculated Area: 179 sq. ft
Included: No

Heated: Yes
Finished: No
Enclosed: Yes
Contiguous: Yes
Permitted: Yes
Wet space: No
Addition: No
Conversion: No

4 Floor 1 - Bath



Max Dimensions: 8'9" x 5'0"
Calculated Area: 44 sq. ft
Included: Yes

Heated: Yes
Finished: Yes
Enclosed: Yes
Contiguous: Yes
Permitted: Yes
Wet space: Yes
Addition: No
Conversion: No

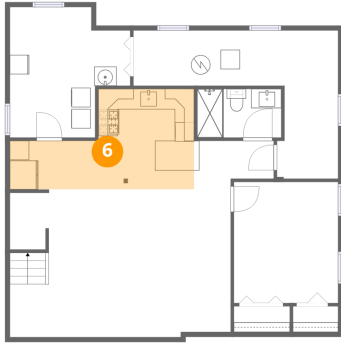
5 Floor 1 - Laundry



Max Dimensions: 12'6" x 13'6"
Calculated Area: 140 sq. ft
Included: No

Heated: Yes
Finished: No
Enclosed: Yes
Contiguous: Yes
Permitted: Yes
Wet space: No
Addition: No
Conversion: No

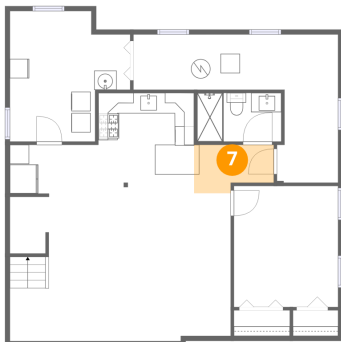
6 Floor 1 - Kitchen



Max Dimensions: 19'1" x 10'5"
Calculated Area: 149 sq. ft
Included: Yes

Heated: Yes
Finished: Yes
Enclosed: Yes
Contiguous: Yes
Permitted: Yes
Wet space: No
Addition: No
Conversion: No

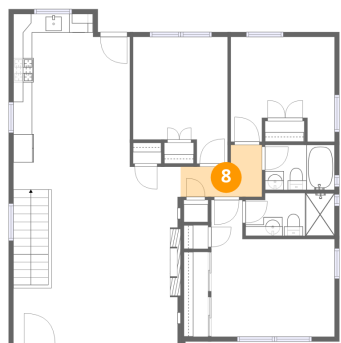
7 Floor 1 - Hall



Max Dimensions: 8'3" x 5'0"
Calculated Area: 37 sq. ft
Included: Yes

Heated: Yes
Finished: Yes
Enclosed: Yes
Contiguous: Yes
Permitted: Yes
Wet space: No
Addition: No
Conversion: No

8 Floor 2 - Hall



Max Dimensions: 8'8" x 5'6"
Calculated Area: 35 sq. ft
Included: Yes

Heated: Yes
Finished: Yes
Enclosed: Yes
Contiguous: Yes
Permitted: Yes
Wet space: No
Addition: No
Conversion: No

9 Floor 2 - Bedroom



Max Dimensions: 10'0" x 13'5"
Calculated Area: 118 sq. ft
Included: Yes

Heated: Yes
Finished: Yes
Enclosed: Yes
Contiguous: Yes
Permitted: Yes
Wet space: No
Addition: No
Conversion: No

10 Floor 2 - Eat-in Kitchen



Max Dimensions: 12'4" x 16'2"
Calculated Area: 191 sq. ft
Included: Yes

Heated: Yes
Finished: Yes
Enclosed: Yes
Contiguous: Yes
Permitted: Yes
Wet space: No
Addition: No
Conversion: No

11 Floor 2 - Bedroom



Max Dimensions: 11'0" x 11'1"
Calculated Area: 110 sq. ft
Included: Yes

Heated: Yes
Finished: Yes
Enclosed: Yes
Contiguous: Yes
Permitted: Yes
Wet space: No
Addition: No
Conversion: No

12 Floor 2 - Primary Bedroom



Max Dimensions: 13'1" x 14'6"
Calculated Area: 149 sq. ft
Included: Yes

Heated: Yes
Finished: Yes
Enclosed: Yes
Contiguous: Yes
Permitted: Yes
Wet space: No
Addition: No
Conversion: No

13 Floor 2 - Living Room



Max Dimensions: 17'9" x 18'10"
Calculated Area: 334 sq. ft
Included: Yes

Heated: Yes
Finished: Yes
Enclosed: Yes
Contiguous: Yes
Permitted: Yes
Wet space: No
Addition: No
Conversion: No

14 Floor 2 - Bath



Max Dimensions: 9'5" x 4'6"
Calculated Area: 41 sq. ft
Included: Yes

Heated: Yes
Finished: Yes
Enclosed: Yes
Contiguous: Yes
Permitted: Yes
Wet space: Yes
Addition: No
Conversion: No

Home report

8836 Sayre Ave, Morton Grove, IL, US

15 Floor 2 - Bath



Max Dimensions: 7'4" x 4'9"
Calculated Area: 35 sq. ft
Included: Yes

Heated: Yes
Finished: Yes
Enclosed: Yes
Contiguous: Yes
Permitted: Yes
Wet space: Yes
Addition: No
Conversion: No