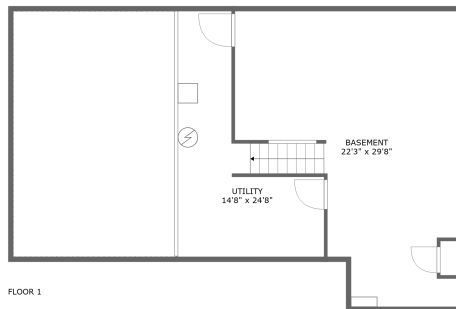
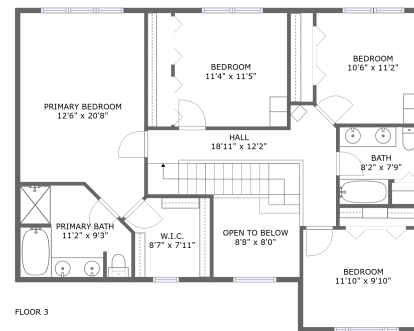
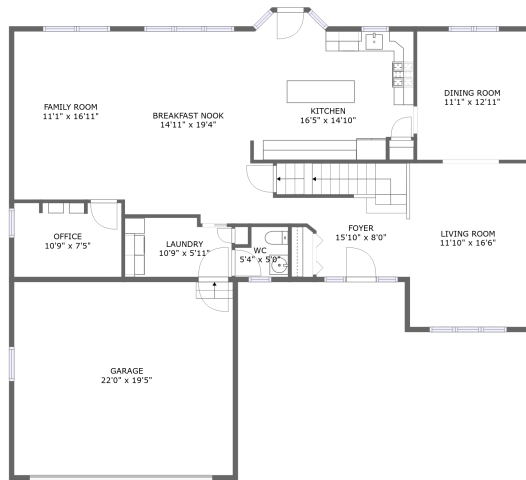



# 283 Exeter Lane, Sugar Grove, Kane County, Illinois, United States, 60554



## Property summary

 **1** Garages

 **4** Bedrooms

 **2** Bathrooms

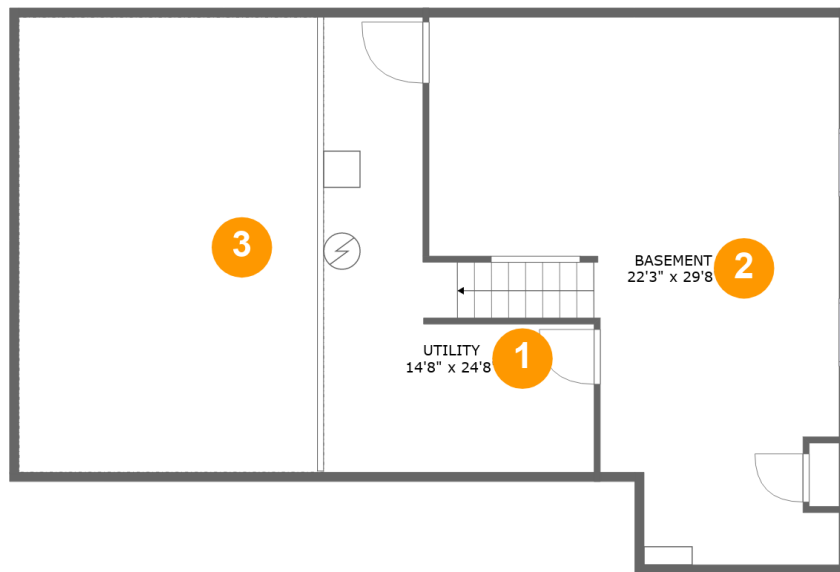
 **1** Half baths

 **3** Floors

 **2,560** Gross living area sqft

 **4,314** Total sqft

283 Exeter Lane, Sugar Grove, Kane County, Illinois,  
United States, 60554



## Room dimensions

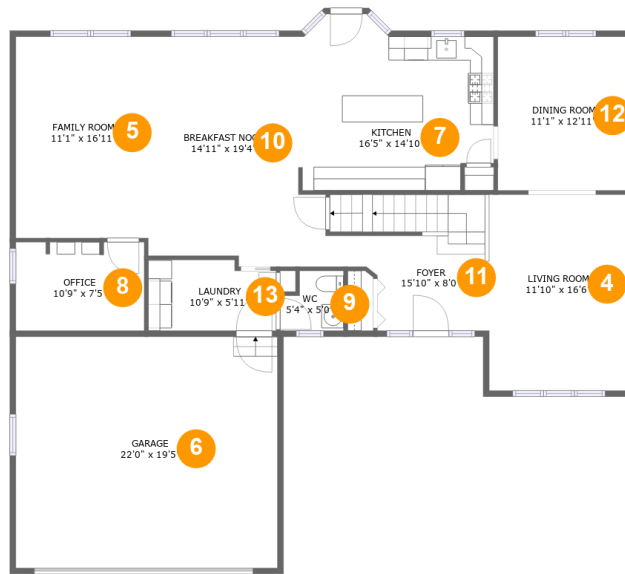
Floor 1

Total sqft: 1229

Living area: 0

#		Dimensions	sqft	Counted as living area
1	Utility	14'8" x 24'8"	208 sq. ft	No
2	Basement	22'3" x 29'8"	517 sq. ft	No
3	Crawl Space	16'2" x 24'8"	408 sq. ft	No

# 283 Exeter Lane, Sugar Grove, Kane County, Illinois, United States, 60554



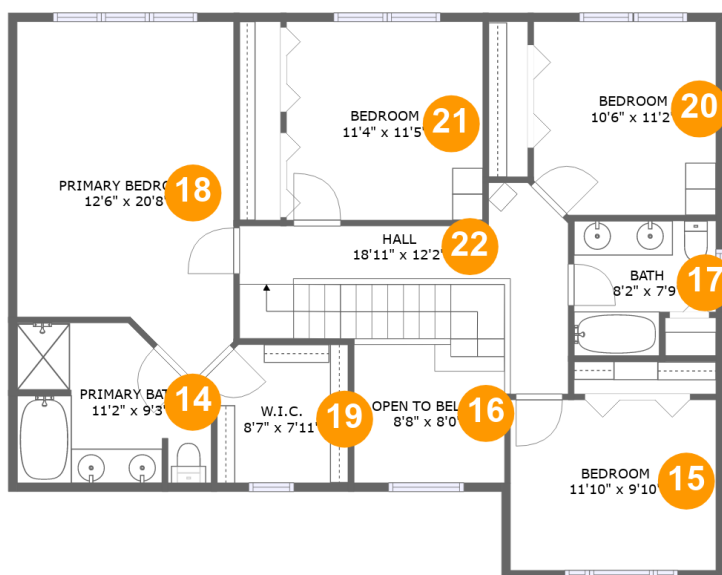
## Room dimensions

Floor 2

Total sqft: 1884 Living area: 1426

#		Dimensions	sqft	Counted as living area
4	Living Room	11'10" x 16'6"	195 sq. ft	Yes
5	Family Room	11'1" x 16'11"	188 sq. ft	Yes
6	Garage	22'0" x 19'5"	427 sq. ft	No
7	Kitchen	16'5" x 14'10"	215 sq. ft	Yes
8	Office	10'9" x 7'5"	80 sq. ft	Yes
9	WC	5'4" x 5'0"	23 sq. ft	Yes
10	Breakfast Nook	14'11" x 19'4"	245 sq. ft	Yes
11	Foyer	15'10" x 8'0"	136 sq. ft	Yes
12	Dining Room	11'1" x 12'11"	144 sq. ft	Yes
13	Laundry	10'9" x 5'11"	61 sq. ft	Yes

# 283 Exeter Lane, Sugar Grove, Kane County, Illinois, United States, 60554



## Room dimensions

Floor 3

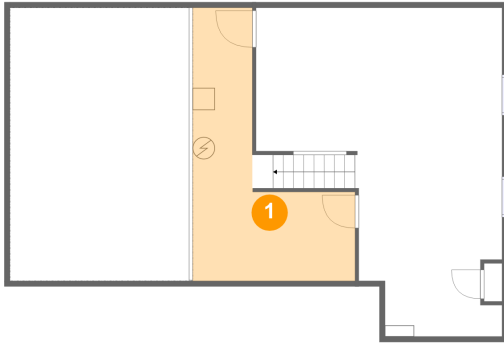
Total sqft: 1201

Living area: 1134

#		Dimensions	sqft	Counted as living area
14	Primary Bath	11'2" x 9'3"	90 sq. ft	Yes
15	Bedroom	11'10" x 9'10"	116 sq. ft	Yes
16	Open To Below	8'8" x 8'0"	63 sq. ft	No
17	Bath	8'2" x 7'9"	55 sq. ft	Yes
18	Primary Bedroom	12'6" x 20'8"	225 sq. ft	Yes
19	W.I.C.	8'7" x 7'11"	61 sq. ft	Yes
20	Bedroom	10'6" x 11'2"	115 sq. ft	Yes
21	Bedroom	11'4" x 11'5"	129 sq. ft	Yes
22	Hall	18'11" x 12'2"	152 sq. ft	Yes

**283 Exeter Lane, Sugar Grove, Kane County, Illinois,  
United States, 60554**

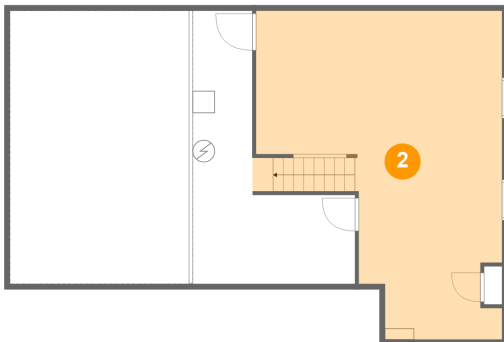
### **1** Floor 1 - Utility



**Dimensions:** 14'8" x 24'8"  
**Area:** 208 sq. ft  
**Counted as living area:** No

**Heated:** Yes  
**Finished:** No  
**Enclosed:** Yes  
**Contiguous:** Yes  
**Permitted:** Yes  
**Wet space:** No  
**Addition:** No  
**Conversion:** No

### **2** Floor 1 - Basement

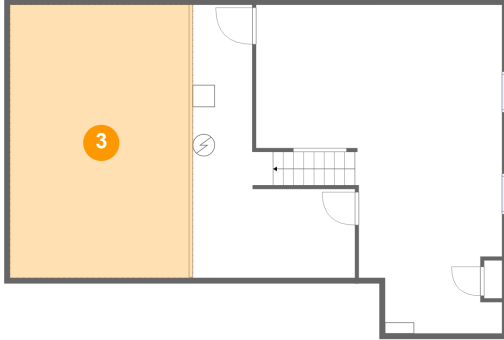


**Dimensions:** 22'3" x 29'8"  
**Area:** 517 sq. ft  
**Counted as living area:** No

**Heated:** Yes  
**Finished:** No  
**Enclosed:** Yes  
**Contiguous:** Yes  
**Permitted:** Yes  
**Wet space:** No  
**Addition:** No  
**Conversion:** No

**283 Exeter Lane, Sugar Grove, Kane County, Illinois,  
United States, 60554**

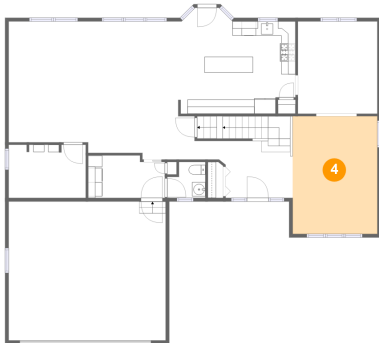
**3 Floor 1 - Crawl Space**



**Dimensions:** 16'2" x 24'8"  
**Area:** 408 sq. ft  
**Counted as living area:** No

**Heated:** No  
**Finished:** No  
**Enclosed:** No  
**Contiguous:** Yes  
**Permitted:** No  
**Wet space:** No  
**Addition:** No  
**Conversion:** No

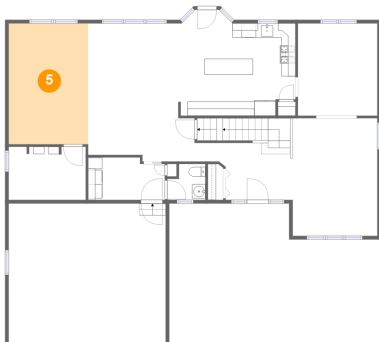
**4 Floor 2 - Living Room**



**Dimensions:** 11'10" x 16'6"  
**Area:** 195 sq. ft  
**Counted as living area:** Yes

**Heated:** Yes  
**Finished:** Yes  
**Enclosed:** Yes  
**Contiguous:** Yes  
**Permitted:** Yes  
**Wet space:** No  
**Addition:** No  
**Conversion:** No

**5 Floor 2 - Family Room**

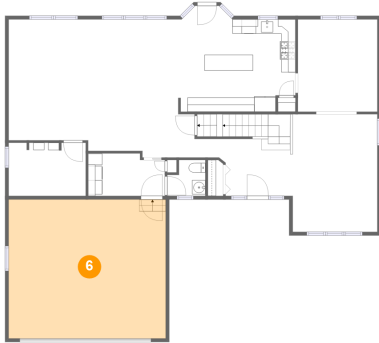


**Dimensions:** 11'1" x 16'11"  
**Area:** 188 sq. ft  
**Counted as living area:** Yes

**Heated:** Yes  
**Finished:** Yes  
**Enclosed:** Yes  
**Contiguous:** Yes  
**Permitted:** Yes  
**Wet space:** No  
**Addition:** No  
**Conversion:** No

283 Exeter Lane, Sugar Grove, Kane County, Illinois,  
United States, 60554

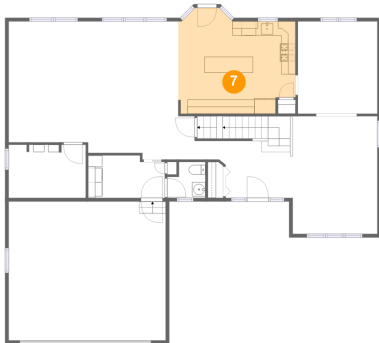
## 6 Floor 2 - Garage



Dimensions: 22'0" x 19'5"  
Area: 427 sq. ft  
Counted as living area: No

Heated: No  
Finished: No  
Enclosed: Yes  
Contiguous: Yes  
Permitted: Yes  
Wet space: No  
Addition: No  
Conversion: No

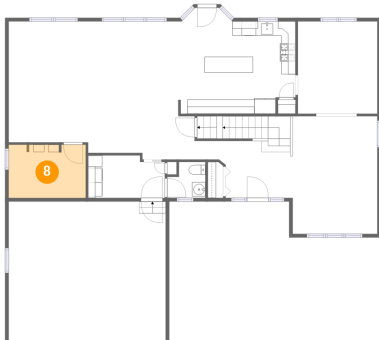
## 7 Floor 2 - Kitchen



Dimensions: 16'5" x 14'10"  
Area: 215 sq. ft  
Counted as living area: Yes

Heated: Yes  
Finished: Yes  
Enclosed: Yes  
Contiguous: Yes  
Permitted: Yes  
Wet space: No  
Addition: No  
Conversion: No

## 8 Floor 2 - Office



Dimensions: 10'9" x 7'5"  
Area: 80 sq. ft  
Counted as living area: Yes

Heated: Yes  
Finished: Yes  
Enclosed: Yes  
Contiguous: Yes  
Permitted: Yes  
Wet space: No  
Addition: No  
Conversion: No

283 Exeter Lane, Sugar Grove, Kane County, Illinois,  
United States, 60554

### 9 Floor 2 - WC



Dimensions: 5'4" x 5'0"  
Area: 23 sq. ft  
Counted as living area: Yes

Heated: Yes  
Finished: Yes  
Enclosed: Yes  
Contiguous: Yes  
Permitted: Yes  
Wet space: Yes  
Addition: No  
Conversion: No

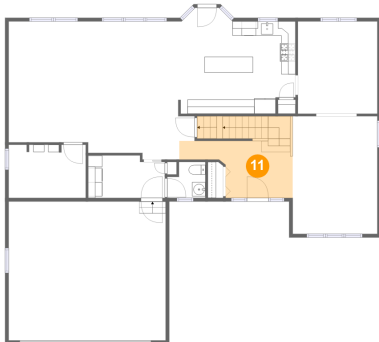
### 10 Floor 2 - Breakfast Nook



Dimensions: 14'11" x 19'4"  
Area: 245 sq. ft  
Counted as living area: Yes

Heated: Yes  
Finished: Yes  
Enclosed: Yes  
Contiguous: Yes  
Permitted: Yes  
Wet space: No  
Addition: No  
Conversion: No

### 11 Floor 2 - Foyer



Dimensions: 15'10" x 8'0"  
Area: 136 sq. ft  
Counted as living area: Yes

Heated: Yes  
Finished: Yes  
Enclosed: Yes  
Contiguous: Yes  
Permitted: Yes  
Wet space: No  
Addition: No  
Conversion: No



283 Exeter Lane, Sugar Grove, Kane County, Illinois,  
United States, 60554

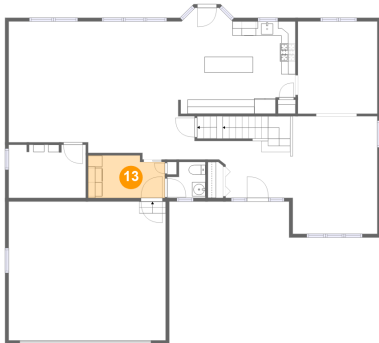
## 12 Floor 2 - Dining Room



Dimensions: 11'1" x 12'11"  
Area: 144 sq. ft  
Counted as living area: Yes

Heated: Yes  
Finished: Yes  
Enclosed: Yes  
Contiguous: Yes  
Permitted: Yes  
Wet space: No  
Addition: No  
Conversion: No

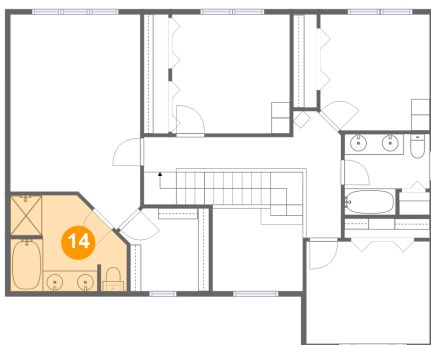
## 13 Floor 2 - Laundry



Dimensions: 10'9" x 5'11"  
Area: 61 sq. ft  
Counted as living area: Yes

Heated: Yes  
Finished: Yes  
Enclosed: Yes  
Contiguous: Yes  
Permitted: Yes  
Wet space: No  
Addition: No  
Conversion: No

## 14 Floor 3 - Primary Bath

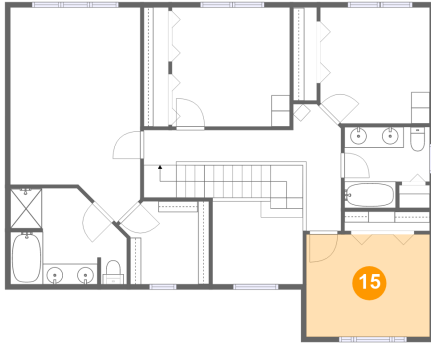


Dimensions: 11'2" x 9'3"  
Area: 90 sq. ft  
Counted as living area: Yes

Heated: Yes  
Finished: Yes  
Enclosed: Yes  
Contiguous: Yes  
Permitted: Yes  
Wet space: Yes  
Addition: No  
Conversion: No

**283 Exeter Lane, Sugar Grove, Kane County, Illinois,  
United States, 60554**

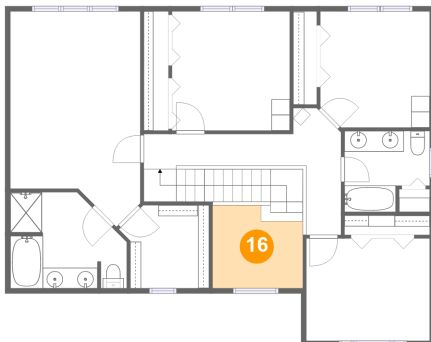
**15 Floor 3 - Bedroom**



**Dimensions:** 11'10" x 9'10"  
**Area:** 116 sq. ft  
**Counted as living area:** Yes

**Heated:** Yes  
**Finished:** Yes  
**Enclosed:** Yes  
**Contiguous:** Yes  
**Permitted:** Yes  
**Wet space:** No  
**Addition:** No  
**Conversion:** No

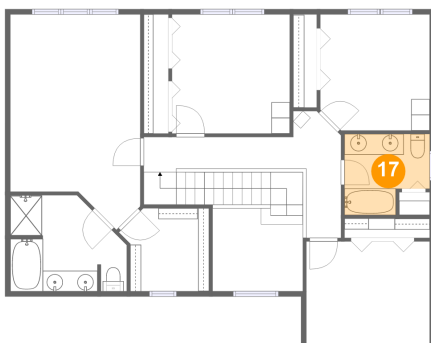
**16 Floor 3 - Open To Below**



**Dimensions:** 8'8" x 8'0"  
**Area:** 63 sq. ft  
**Counted as living area:** No

**Heated:** No  
**Finished:** No  
**Enclosed:** No  
**Contiguous:** Yes  
**Permitted:** No  
**Wet space:** No  
**Addition:** No  
**Conversion:** No

**17 Floor 3 - Bath**

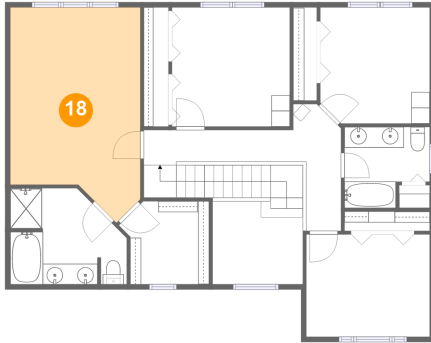


**Dimensions:** 8'2" x 7'9"  
**Area:** 55 sq. ft  
**Counted as living area:** Yes

**Heated:** Yes  
**Finished:** Yes  
**Enclosed:** Yes  
**Contiguous:** Yes  
**Permitted:** Yes  
**Wet space:** Yes  
**Addition:** No  
**Conversion:** No

283 Exeter Lane, Sugar Grove, Kane County, Illinois,  
United States, 60554

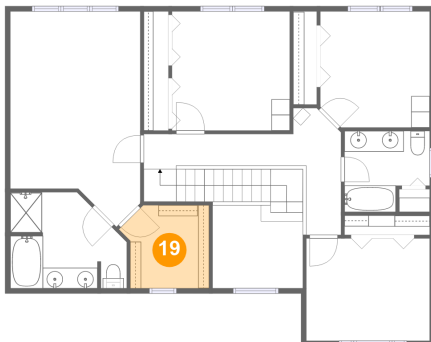
### 18 Floor 3 - Primary Bedroom



Dimensions: 12'6" x 20'8"  
Area: 225 sq. ft  
Counted as living area: Yes

Heated: Yes  
Finished: Yes  
Enclosed: Yes  
Contiguous: Yes  
Permitted: Yes  
Wet space: No  
Addition: No  
Conversion: No

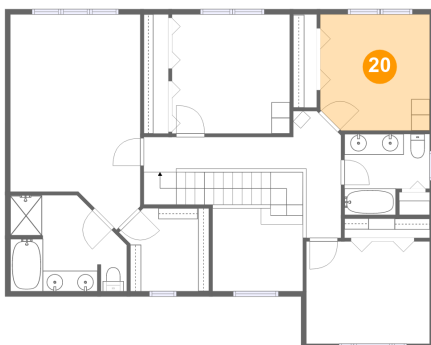
### 19 Floor 3 - W.I.C.



Dimensions: 8'7" x 7'11"  
Area: 61 sq. ft  
Counted as living area: Yes

Heated: Yes  
Finished: Yes  
Enclosed: Yes  
Contiguous: Yes  
Permitted: Yes  
Wet space: No  
Addition: No  
Conversion: No

### 20 Floor 3 - Bedroom

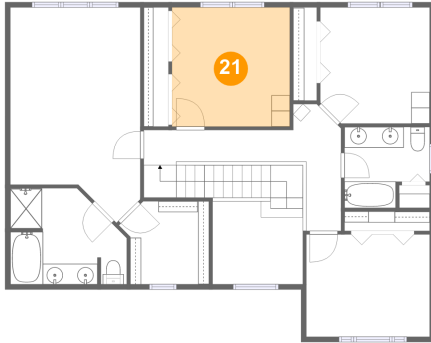


Dimensions: 10'6" x 11'2"  
Area: 115 sq. ft  
Counted as living area: Yes

Heated: Yes  
Finished: Yes  
Enclosed: Yes  
Contiguous: Yes  
Permitted: Yes  
Wet space: No  
Addition: No  
Conversion: No

283 Exeter Lane, Sugar Grove, Kane County, Illinois,  
United States, 60554

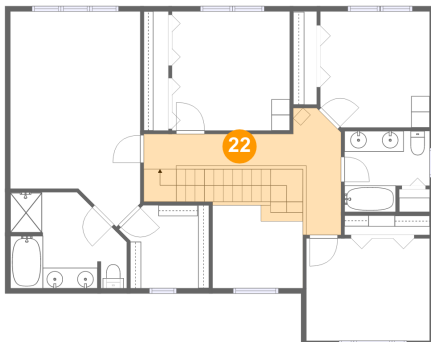
### 21 Floor 3 - Bedroom



Dimensions: 11'4" x 11'5"  
Area: 129 sq. ft  
Counted as living area: Yes

Heated: Yes  
Finished: Yes  
Enclosed: Yes  
Contiguous: Yes  
Permitted: Yes  
Wet space: No  
Addition: No  
Conversion: No

### 22 Floor 3 - Hall



Dimensions: 18'11" x 12'2"  
Area: 152 sq. ft  
Counted as living area: Yes

Heated: Yes  
Finished: Yes  
Enclosed: Yes  
Contiguous: Yes  
Permitted: Yes  
Wet space: No  
Addition: No  
Conversion: No