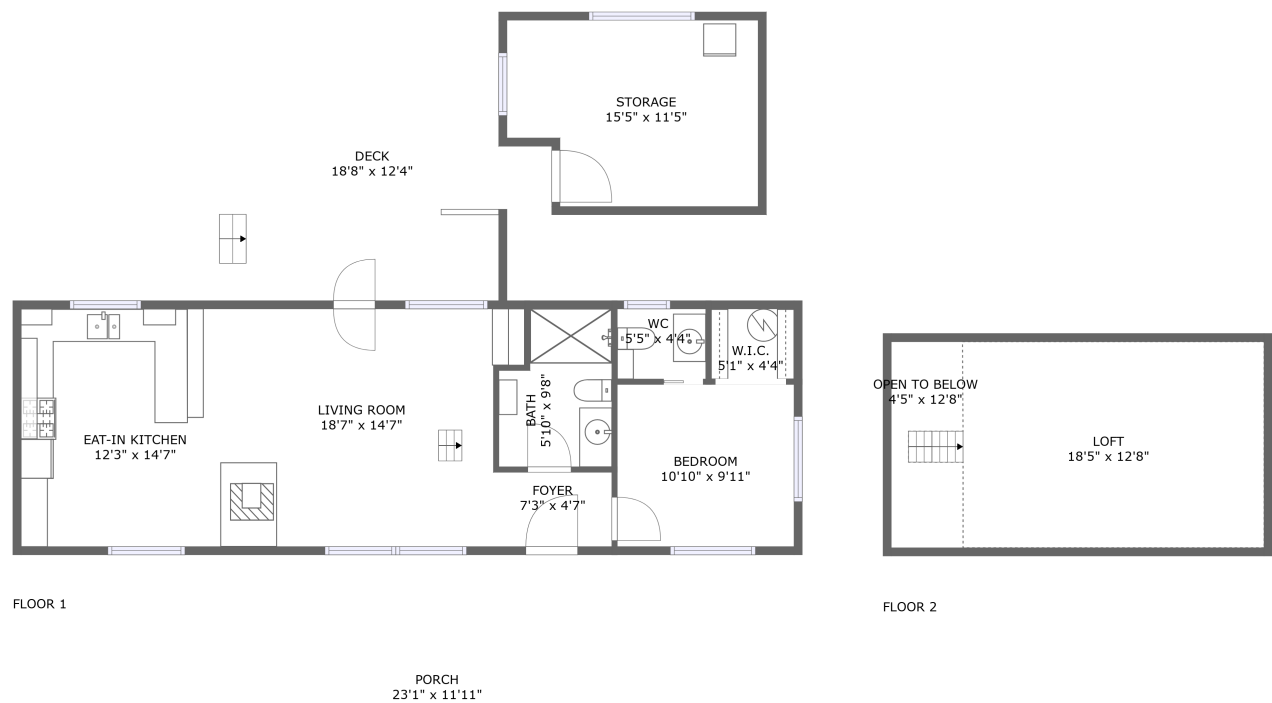
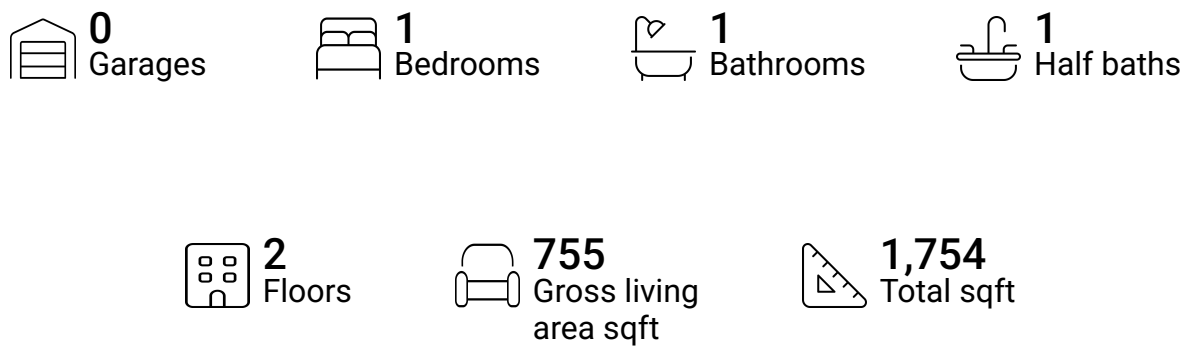


Home report

18400 Griffin Gulch Ln,Baker City,OR,US

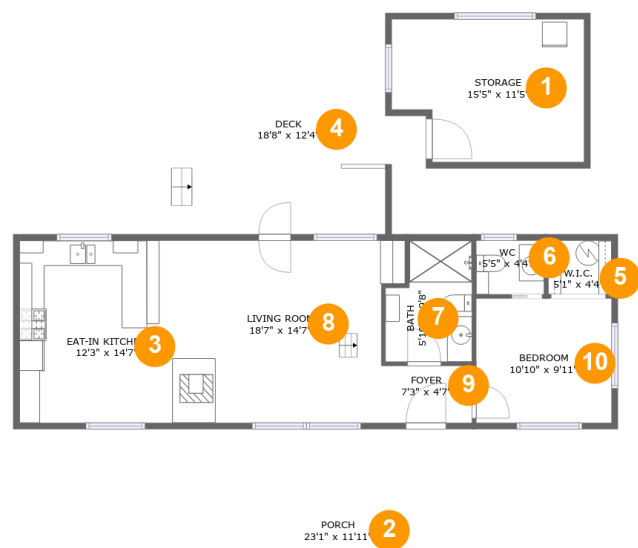


Property summary



Home report

18400 Griffin Gulch Ln,Baker City,OR,US



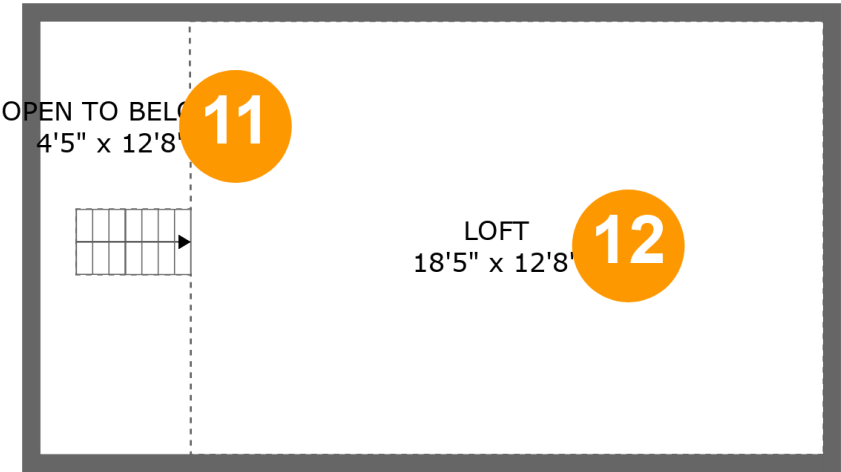
Room dimensions

Floor 1 Total sqft: 1430 Living area: 755

#		Dimensions	sqft	Counted as living area
1	Storage	15'5" x 11'5"	162 sq. ft	No
2	Porch	23'1" x 11'11"	276 sq. ft	No
3	Eat-in Kitchen	12'3" x 14'7"	178 sq. ft	Yes
4	Deck	18'8" x 12'4"	209 sq. ft	No
5	W.I.C.	5'1" x 4'4"	22 sq. ft	Yes
6	WC	5'5" x 4'4"	23 sq. ft	Yes
7	Bath	5'10" x 9'8"	60 sq. ft	Yes
8	Living Room	18'7" x 14'7"	250 sq. ft	Yes
9	Foyer	7'3" x 4'7"	33 sq. ft	Yes
10	Bedroom	10'10" x 9'11"	108 sq. ft	Yes

Home report

18400 Griffin Gulch Ln,Baker City,OR,US

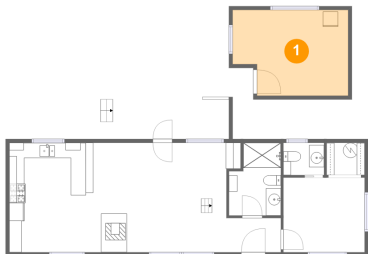


Room dimensions

Floor 2 Total sqft: 324 Living area: 0

#		Dimensions	sqft	Counted as living area
11	Open To Below	4'5" x 12'8"	49 sq. ft	No
12	Loft	18'5" x 12'8"	239 sq. ft	No

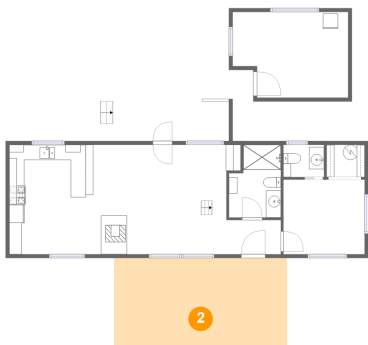
1 Floor 1 - Storage



Dimensions: 15'5" x 11'5"
Area: 162 sq. ft
Counted as living area: No

Heated: No
Finished: No
Enclosed: No
Contiguous: Yes
Permitted: Yes
Wet space: No
Addition: No
Conversion: No

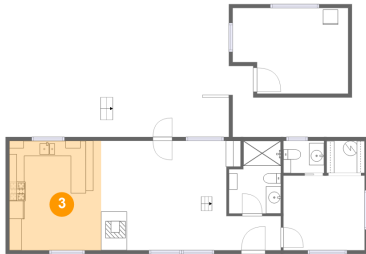
2 Floor 1 - Porch



Dimensions: 23'1" x 11'11"
Area: 276 sq. ft
Counted as living area: No

Heated: No
Finished: Yes
Enclosed: No
Contiguous: Yes
Permitted: Yes
Wet space: No
Addition: No
Conversion: No

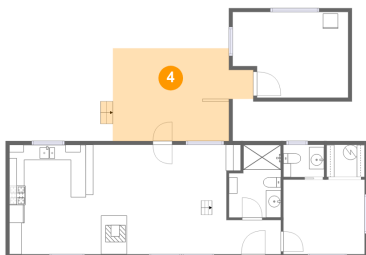
3 Floor 1 - Eat-in Kitchen



Dimensions: 12'3" x 14'7"
Area: 178 sq. ft
Counted as living area: Yes

Heated: Yes
Finished: Yes
Enclosed: Yes
Contiguous: Yes
Permitted: Yes
Wet space: No
Addition: No
Conversion: No

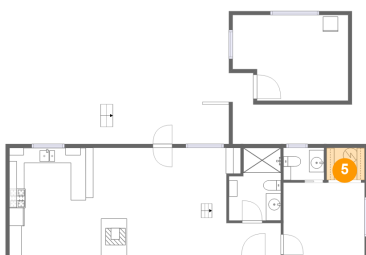
4 Floor 1 - Deck



Dimensions: 18'8" x 12'4"
Area: 209 sq. ft
Counted as living area: No

Heated: No
Finished: Yes
Enclosed: No
Contiguous: Yes
Permitted: Yes
Wet space: No
Addition: No
Conversion: No

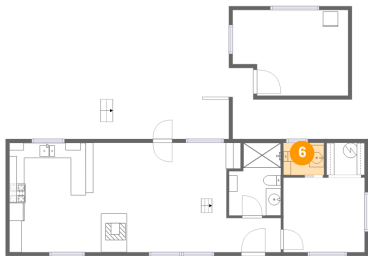
5 Floor 1 - W.I.C.



Dimensions: 5'1" x 4'4"
Area: 22 sq. ft
Counted as living area: Yes

Heated: Yes
Finished: Yes
Enclosed: Yes
Contiguous: Yes
Permitted: Yes
Wet space: No
Addition: No
Conversion: No

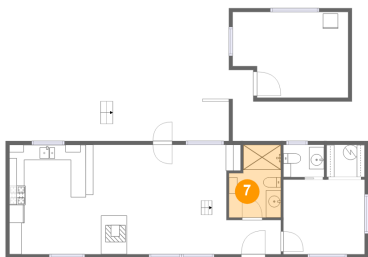
6 Floor 1 - WC



Dimensions: 5'5" x 4'4"
Area: 23 sq. ft
Counted as living area: Yes

Heated: Yes
Finished: Yes
Enclosed: Yes
Contiguous: Yes
Permitted: Yes
Wet space: Yes
Addition: No
Conversion: No

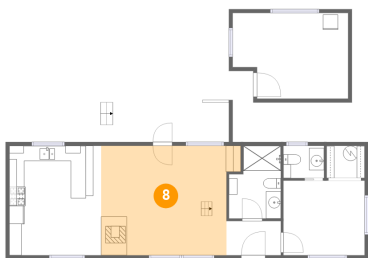
7 Floor 1 - Bath



Dimensions: 5'10" x 9'8"
Area: 60 sq. ft
Counted as living area: Yes

Heated: Yes
Finished: Yes
Enclosed: Yes
Contiguous: Yes
Permitted: Yes
Wet space: Yes
Addition: No
Conversion: No

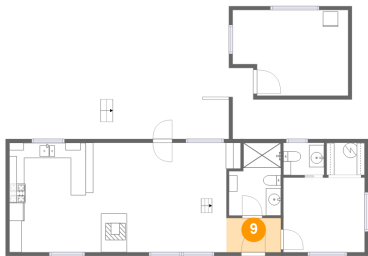
8 Floor 1 - Living Room



Dimensions: 18'7" x 14'7"
Area: 250 sq. ft
Counted as living area: Yes

Heated: Yes
Finished: Yes
Enclosed: Yes
Contiguous: Yes
Permitted: Yes
Wet space: No
Addition: No
Conversion: No

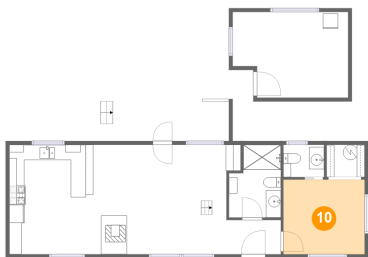
9 Floor 1 - Foyer



Dimensions: 7'3" x 4'7"
Area: 33 sq. ft
Counted as living area: Yes

Heated: Yes
Finished: Yes
Enclosed: Yes
Contiguous: Yes
Permitted: Yes
Wet space: No
Addition: No
Conversion: No

10 Floor 1 - Bedroom



Dimensions: 10'10" x 9'11"
Area: 108 sq. ft
Counted as living area: Yes

Heated: Yes
Finished: Yes
Enclosed: Yes
Contiguous: Yes
Permitted: Yes
Wet space: No
Addition: No
Conversion: No

11 Floor 2 - Open To Below



Dimensions: 4'5" x 12'8"
Area: 49 sq. ft
Counted as living area: No

Heated: No
Finished: No
Enclosed: No
Contiguous: Yes
Permitted: No
Wet space: No
Addition: No
Conversion: No

12 Floor 2 - Loft



Dimensions: 18'5" x 12'8"
Area: 239 sq. ft
Counted as living area: No

Heated: Yes
Finished: Yes
Enclosed: Yes
Contiguous: No
Permitted: Yes
Wet space: No
Addition: No
Conversion: No