

920 East Lake Drive, East Lake, Tarpon Springs,
Pinellas County, Florida, United States, 34688



Property summary



2
Garages



4
Bedrooms



4
Bathrooms



1
Half baths



4
Floors

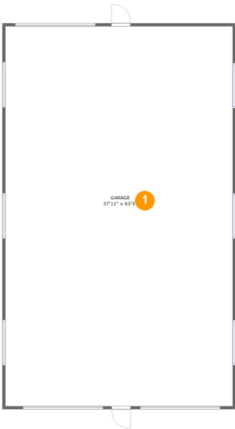


3,223
Gross living
area sqft



9,122
Total sqft

920 East Lake Drive, East Lake, Tarpon Springs,
Pinellas County, Florida, United States, 34688



Room dimensions

Floor 1Total sqft: 2600 Living area: 0

#		Dimensions	sqft	Counted as living area
1	Garage	37'11" x 63'5"	2405 sq. ft	No
2	Storage Shed	7'11" x 9'4"	74 sq. ft	No



Total sqft: 4415 Living area: 1441

Scan captured on Thu, 20 Mar 2025 20:10:06 GMT
Information is calculated [REDACTED] deemed highly reliable but not guaranteed.

920 East Lake Drive, East Lake, Tarpon Springs,
Pinellas County, Florida, United States, 34688

#		Dimensions	sqft	Counted as living area
14	Hall	7'6" x 15'8"	118 sq. ft	Yes
15	Kitchen	7'2" x 14'5"	102 sq. ft	Yes
16	Bath	5'8" x 8'8"	49 sq. ft	Yes
17	Storage	5'8" x 4'4"	24 sq. ft	No
18	Storage	7'6" x 9'4"	70 sq. ft	No
19	Living Room	15'0" x 14'1"	202 sq. ft	Yes
20	Dining Area	21'1" x 11'4"	187 sq. ft	Yes

920 East Lake Drive, East Lake, Tarpon Springs,
Pinellas County, Florida, United States, 34688



Room dimensions

Floor 3 Total sqft: 168 Living area: 0

#		Dimensions	sqft	Counted as living area
21	Hall	7'6" x 3'7"	73 sq. ft	No
22	Electrical Room	5'8" x 11'2"	64 sq. ft	No

920 East Lake Drive, East Lake, Tarpon Springs,
Pinellas County, Florida, United States, 34688



Room dimensions

Floor 4

Total sqft: 1939 Living area: 1782

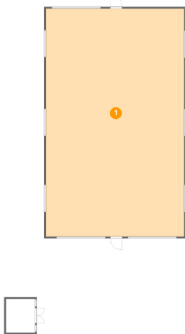
#		Dimensions	sqft	Counted as living area
23	Bath	8'4" x 5'0"	42 sq. ft	Yes
24	W.I.C.	8'4" x 5'5"	45 sq. ft	Yes
25	Hall	3'10" x 11'10"	45 sq. ft	Yes
26	Kitchen	8'7" x 18'11"	160 sq. ft	Yes
27	Hall	12'8" x 6'9"	85 sq. ft	Yes
28	Primary Bedroom	26'2" x 12'11"	285 sq. ft	Yes
29	Dining Area	16'3" x 12'1"	197 sq. ft	Yes
30	Laundry	7'3" x 7'9"	56 sq. ft	Yes
31	Bedroom	16'1" x 11'6"	166 sq. ft	Yes
32	Hall	3'9" x 2'6"	69 sq. ft	Yes
33	Living Room	21'4" x 20'5"	368 sq. ft	Yes

920 East Lake Drive, East Lake, Tarpon Springs,
Pinellas County, Florida, United States, 34688

#		Dimensions	sqft	Counted as living area
34	Balcony	5'7" x 28'0"	157 sq. ft	No
35	Bath	8'4" x 8'4"	68 sq. ft	Yes

920 East Lake Drive, East Lake, Tarpon Springs,
Pinellas County, Florida, United States, 34688

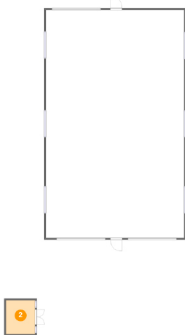
1 Floor 1 - Garage



Dimensions: 37'11" x 63'5"
Area: 2405 sq. ft
Counted as living area: No

Heated: No
Finished: No
Enclosed: Yes
Contiguous: Yes
Permitted: Yes
Wet space: No
Addition: No
Conversion: No

2 Floor 1 - Storage Shed



Dimensions: 7'11" x 9'4"
Area: 74 sq. ft
Counted as living area: No

Heated: No
Finished: No
Enclosed: No
Contiguous: Yes
Permitted: Yes
Wet space: No
Addition: No
Conversion: No

920 East Lake Drive, East Lake, Tarpon Springs,
Pinellas County, Florida, United States, 34688

3 Floor 2 - W.I.C.



Dimensions: 6'4" x 8'3"
Area: 52 sq. ft
Counted as living area: Yes

Heated: Yes
Finished: Yes
Enclosed: Yes
Contiguous: Yes
Permitted: Yes
Wet space: No
Addition: No
Conversion: No

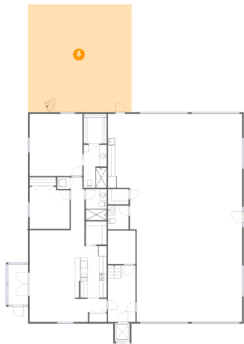
4 Floor 2 - Hall



Dimensions: 3'9" x 14'8"
Area: 53 sq. ft
Counted as living area: Yes

Heated: Yes
Finished: Yes
Enclosed: Yes
Contiguous: Yes
Permitted: Yes
Wet space: No
Addition: No
Conversion: No

5 Floor 2 - Patio



Dimensions: 28'4" x 29'10"
Area: 848 sq. ft
Counted as living area: No

Heated: No
Finished: Yes
Enclosed: No
Contiguous: Yes
Permitted: Yes
Wet space: No
Addition: No
Conversion: No

920 East Lake Drive, East Lake, Tarpon Springs,
Pinellas County, Florida, United States, 34688

6 Floor 2 - Laundry



Dimensions: 3'5" x 3'3"
Area: 11 sq. ft
Counted as living area: Yes

Heated: Yes
Finished: Yes
Enclosed: Yes
Contiguous: Yes
Permitted: Yes
Wet space: No
Addition: No
Conversion: No

7 Floor 2 - Pantry



Dimensions: 5'8" x 6'6"
Area: 37 sq. ft
Counted as living area: Yes

Heated: Yes
Finished: Yes
Enclosed: Yes
Contiguous: Yes
Permitted: Yes
Wet space: No
Addition: No
Conversion: No

8 Floor 2 - Garage



Dimensions: 36'9" x 57'8"
Area: 1846 sq. ft
Counted as living area: No

Heated: No
Finished: Yes
Enclosed: Yes
Contiguous: Yes
Permitted: Yes
Wet space: No
Addition: No
Conversion: No

920 East Lake Drive, East Lake, Tarpon Springs,
Pinellas County, Florida, United States, 34688

9 Floor 2 - Bedroom



Dimensions: 10'11" x 11'8"
Area: 124 sq. ft
Counted as living area: Yes

Heated: Yes
Finished: Yes
Enclosed: Yes
Contiguous: Yes
Permitted: Yes
Wet space: No
Addition: No
Conversion: No

10 Floor 2 - Screened Patio



Dimensions: 5'5" x 11'3"
Area: 62 sq. ft
Counted as living area: No

Heated: No
Finished: Yes
Enclosed: No
Contiguous: Yes
Permitted: Yes
Wet space: No
Addition: No
Conversion: No

11 Floor 2 - Primary Bedroom



Dimensions: 14'5" x 17'2"
Area: 248 sq. ft
Counted as living area: Yes

Heated: Yes
Finished: Yes
Enclosed: Yes
Contiguous: Yes
Permitted: Yes
Wet space: No
Addition: No
Conversion: No

920 East Lake Drive, East Lake, Tarpon Springs,
Pinellas County, Florida, United States, 34688

12 Floor 2 - WC



Dimensions: 5'8" x 6'7"
Area: 37 sq. ft
Counted as living area: No

Heated: Yes
Finished: Yes
Enclosed: Yes
Contiguous: No
Permitted: Yes
Wet space: Yes
Addition: No
Conversion: No

13 Floor 2 - Bath



Dimensions: 6'4" x 11'11"
Area: 74 sq. ft
Counted as living area: Yes

Heated: Yes
Finished: Yes
Enclosed: Yes
Contiguous: Yes
Permitted: Yes
Wet space: Yes
Addition: No
Conversion: No

14 Floor 2 - Hall



Dimensions: 7'6" x 15'8"
Area: 118 sq. ft
Counted as living area: Yes

Heated: Yes
Finished: Yes
Enclosed: Yes
Contiguous: Yes
Permitted: Yes
Wet space: No
Addition: No
Conversion: No

920 East Lake Drive, East Lake, Tarpon Springs,
Pinellas County, Florida, United States, 34688

15 Floor 2 - Kitchen



Dimensions: 7'2" x 14'5"
Area: 102 sq. ft
Counted as living area: Yes

Heated: Yes
Finished: Yes
Enclosed: Yes
Contiguous: Yes
Permitted: Yes
Wet space: No
Addition: No
Conversion: No

16 Floor 2 - Bath



Dimensions: 5'8" x 8'8"
Area: 49 sq. ft
Counted as living area: Yes

Heated: Yes
Finished: Yes
Enclosed: Yes
Contiguous: Yes
Permitted: Yes
Wet space: Yes
Addition: No
Conversion: No

17 Floor 2 - Storage



Dimensions: 5'8" x 4'4"
Area: 24 sq. ft
Counted as living area: No

Heated: No
Finished: No
Enclosed: No
Contiguous: No
Permitted: Yes
Wet space: No
Addition: No
Conversion: No

920 East Lake Drive, East Lake, Tarpon Springs,
Pinellas County, Florida, United States, 34688

18 Floor 2 - Storage



Dimensions: 7'6" x 9'4"
Area: 70 sq. ft
Counted as living area: No

Heated: No
Finished: No
Enclosed: No
Contiguous: No
Permitted: Yes
Wet space: No
Addition: No
Conversion: No

19 Floor 2 - Living Room



Dimensions: 15'0" x 14'1"
Area: 202 sq. ft
Counted as living area: Yes

Heated: Yes
Finished: Yes
Enclosed: Yes
Contiguous: Yes
Permitted: Yes
Wet space: No
Addition: No
Conversion: No

20 Floor 2 - Dining Area

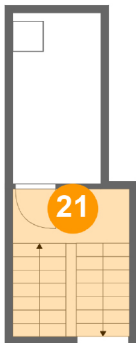


Dimensions: 21'1" x 11'4"
Area: 187 sq. ft
Counted as living area: Yes

Heated: Yes
Finished: Yes
Enclosed: Yes
Contiguous: Yes
Permitted: Yes
Wet space: No
Addition: No
Conversion: No

920 East Lake Drive, East Lake, Tarpon Springs,
Pinellas County, Florida, United States, 34688

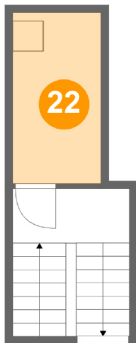
21 Floor 3 - Hall



Dimensions: 7'6" x 3'7"
Area: 73 sq. ft
Counted as living area: No

Heated: Yes
Finished: Yes
Enclosed: Yes
Contiguous: No
Permitted: Yes
Wet space: No
Addition: No
Conversion: No

22 Floor 3 - Electrical Room



Dimensions: 5'8" x 11'2"
Area: 64 sq. ft
Counted as living area: No

Heated: No
Finished: Yes
Enclosed: Yes
Contiguous: Yes
Permitted: Yes
Wet space: No
Addition: No
Conversion: No

23 Floor 4 - Bath



Dimensions: 8'4" x 5'0"
Area: 42 sq. ft
Counted as living area: Yes

Heated: Yes
Finished: Yes
Enclosed: Yes
Contiguous: Yes
Permitted: Yes
Wet space: Yes
Addition: No
Conversion: No

920 East Lake Drive, East Lake, Tarpon Springs,
Pinellas County, Florida, United States, 34688

24 Floor 4 - W.I.C.



Dimensions: 8'4" x 5'5"
Area: 45 sq. ft
Counted as living area: Yes

Heated: Yes
Finished: Yes
Enclosed: Yes
Contiguous: Yes
Permitted: Yes
Wet space: No
Addition: No
Conversion: No

25 Floor 4 - Hall



Dimensions: 3'10" x 11'10"
Area: 45 sq. ft
Counted as living area: Yes

Heated: Yes
Finished: Yes
Enclosed: Yes
Contiguous: Yes
Permitted: Yes
Wet space: No
Addition: No
Conversion: No

26 Floor 4 - Kitchen



Dimensions: 8'7" x 18'11"
Area: 160 sq. ft
Counted as living area: Yes

Heated: Yes
Finished: Yes
Enclosed: Yes
Contiguous: Yes
Permitted: Yes
Wet space: No
Addition: No
Conversion: No

920 East Lake Drive, East Lake, Tarpon Springs,
Pinellas County, Florida, United States, 34688

27 Floor 4 - Hall



Dimensions: 12'8" x 6'9"
Area: 85 sq. ft
Counted as living area: Yes

Heated: Yes
Finished: Yes
Enclosed: Yes
Contiguous: Yes
Permitted: Yes
Wet space: No
Addition: No
Conversion: No

28 Floor 4 - Primary Bedroom



Dimensions: 26'2" x 12'11"
Area: 285 sq. ft
Counted as living area: Yes

Heated: Yes
Finished: Yes
Enclosed: Yes
Contiguous: Yes
Permitted: Yes
Wet space: No
Addition: No
Conversion: No

29 Floor 4 - Dining Area



Dimensions: 16'3" x 12'1"
Area: 197 sq. ft
Counted as living area: Yes

Heated: Yes
Finished: Yes
Enclosed: Yes
Contiguous: Yes
Permitted: Yes
Wet space: No
Addition: No
Conversion: No

920 East Lake Drive, East Lake, Tarpon Springs,
Pinellas County, Florida, United States, 34688

30 Floor 4 - Laundry



Dimensions: 7'3" x 7'9"
Area: 56 sq. ft
Counted as living area: Yes

Heated: Yes
Finished: Yes
Enclosed: Yes
Contiguous: Yes
Permitted: Yes
Wet space: No
Addition: No
Conversion: No

31 Floor 4 - Bedroom



Dimensions: 16'1" x 11'6"
Area: 166 sq. ft
Counted as living area: Yes

Heated: Yes
Finished: Yes
Enclosed: Yes
Contiguous: Yes
Permitted: Yes
Wet space: No
Addition: No
Conversion: No

32 Floor 4 - Hall



Dimensions: 3'9" x 2'6"
Area: 69 sq. ft
Counted as living area: Yes

Heated: Yes
Finished: Yes
Enclosed: Yes
Contiguous: Yes
Permitted: Yes
Wet space: No
Addition: No
Conversion: No

920 East Lake Drive, East Lake, Tarpon Springs,
Pinellas County, Florida, United States, 34688

33 Floor 4 - Living Room



Dimensions: 21'4" x 20'5"
Area: 368 sq. ft
Counted as living area: Yes

Heated: Yes
Finished: Yes
Enclosed: Yes
Contiguous: Yes
Permitted: Yes
Wet space: No
Addition: No
Conversion: No

34 Floor 4 - Balcony



Dimensions: 5'7" x 28'0"
Area: 157 sq. ft
Counted as living area: No

Heated: No
Finished: Yes
Enclosed: No
Contiguous: Yes
Permitted: Yes
Wet space: No
Addition: No
Conversion: No

35 Floor 4 - Bath



Dimensions: 8'4" x 8'4"
Area: 68 sq. ft
Counted as living area: Yes

Heated: Yes
Finished: Yes
Enclosed: Yes
Contiguous: Yes
Permitted: Yes
Wet space: Yes
Addition: No
Conversion: No