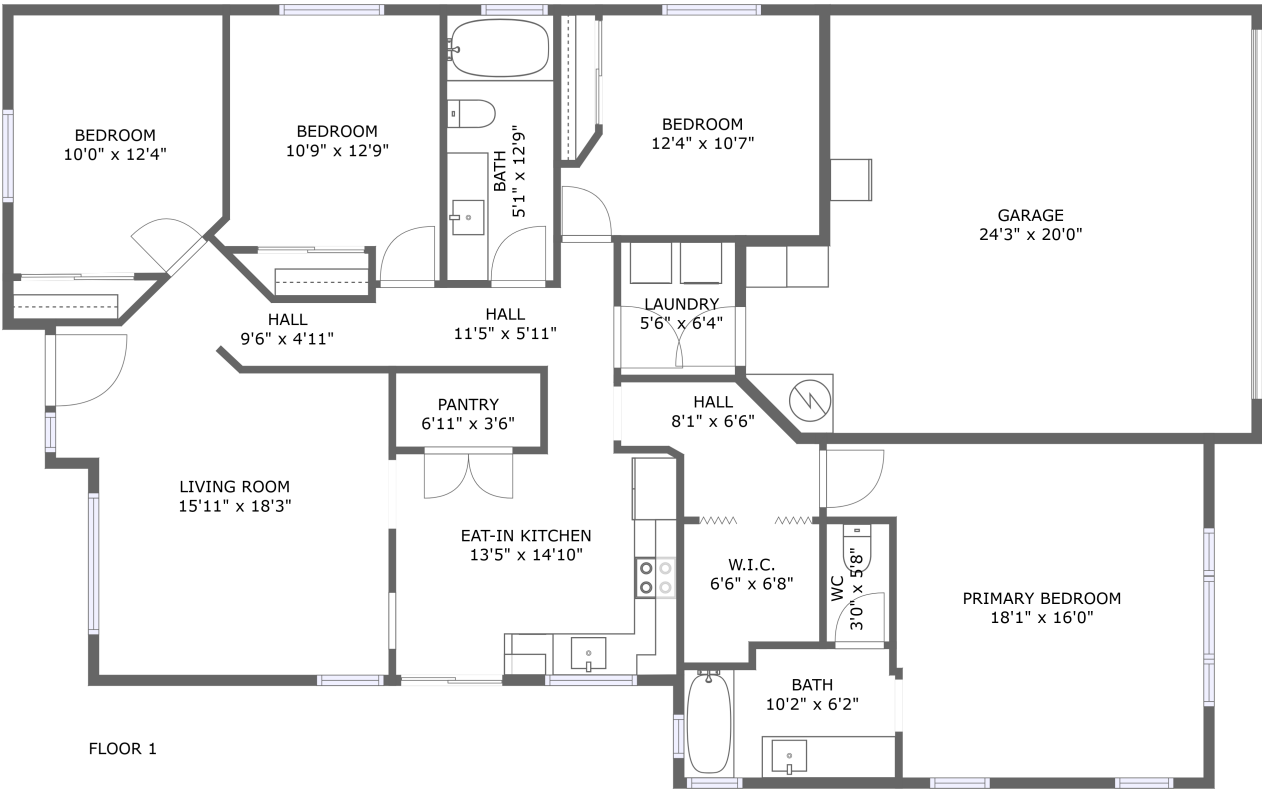



6595 Richards Ave,Santa Fe,NM,US



Property summary

 **1** Garages

 **4** Bedrooms

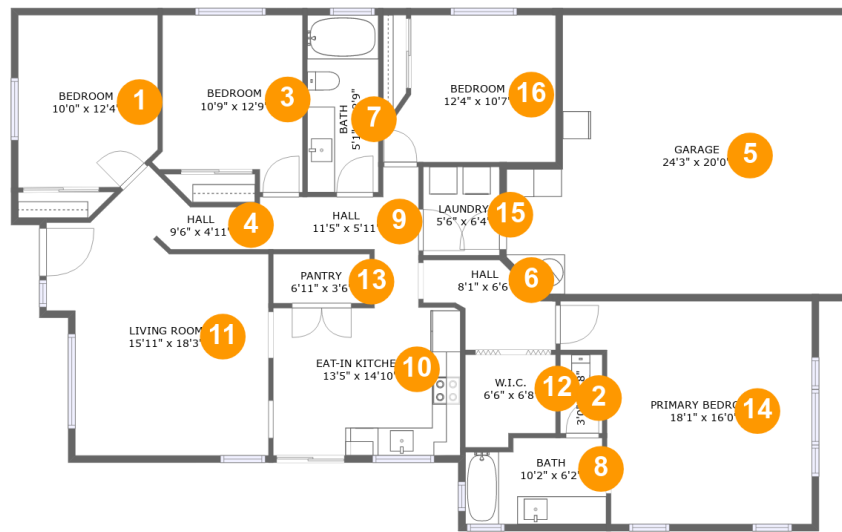
 **2** Bathrooms

 **0** Half baths

 **1** Floors

 **1,553**
Gross living
area sqft

 **2,012**
Total sqft

6595 Richards Ave, Santa Fe, NM, US

Room dimensions

Floor 1

Total sqft: 2012 Living area: 1553

#		Dimensions	sqft	Counted as living area
1	Bedroom	10'0" x 12'4"	120 sq. ft	Yes
2	WC	3'0" x 5'8"	17 sq. ft	Yes
3	Bedroom	10'9" x 12'9"	117 sq. ft	Yes
4	Hall	9'6" x 4'11"	34 sq. ft	Yes
5	Garage	24'3" x 20'0"	437 sq. ft	No
6	Hall	8'1" x 6'6"	44 sq. ft	Yes
7	Bath	5'1" x 12'9"	65 sq. ft	Yes
8	Bath	10'2" x 6'2"	59 sq. ft	Yes
9	Hall	11'5" x 5'11"	48 sq. ft	Yes
10	Eat-in Kitchen	13'5" x 14'10"	156 sq. ft	Yes
11	Living Room	15'11" x 18'3"	231 sq. ft	Yes

Scan captured on Thu, 20 Feb 2025 22:21:29 GMT

Information is calculated by Cubicasa technology deemed highly reliable but not guaranteed.

6595 Richards Ave,Santa Fe,NM,US

#		Dimensions	sqft	Counted as living area
12	W.I.C.	6'6" x 6'8"	40 sq. ft	Yes
13	Pantry	6'11" x 3'6"	25 sq. ft	Yes
14	Primary Bedroom	18'1" x 16'0"	246 sq. ft	Yes
15	Laundry	5'6" x 6'4"	35 sq. ft	Yes
16	Bedroom	12'4" x 10'7"	117 sq. ft	Yes

6595 Richards Ave,Santa Fe,NM,US

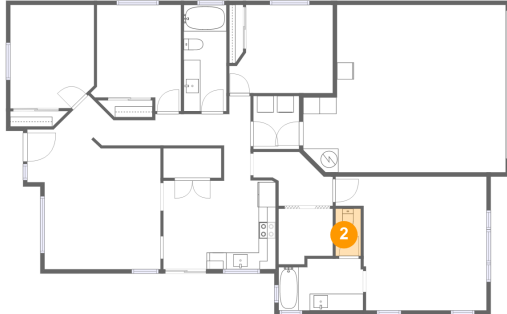
1 Floor 1 - Bedroom



Dimensions: 10'0" x 12'4"
Area: 120 sq. ft
Counted as living area: Yes

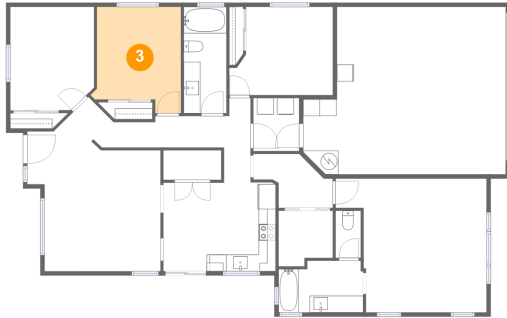
Heated: Yes
Finished: Yes
Enclosed: Yes
Contiguous: Yes
Permitted: Yes
Wet space: No
Addition: No
Conversion: No

2 Floor 1 - WC



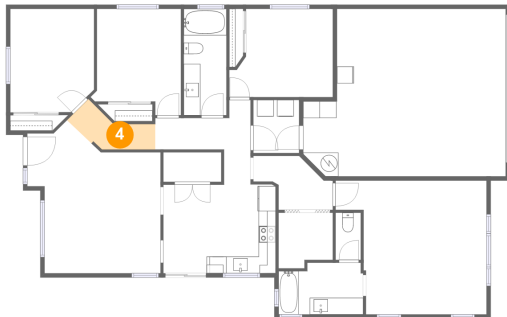
Dimensions: 3'0" x 5'8"
Area: 17 sq. ft
Counted as living area: Yes

Heated: Yes
Finished: Yes
Enclosed: Yes
Contiguous: Yes
Permitted: Yes
Wet space: Yes
Addition: No
Conversion: No

6595 Richards Ave, Santa Fe, NM, US**3 Floor 1 - Bedroom**

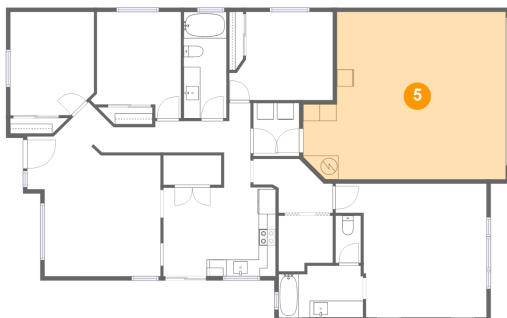
Dimensions: 10'9" x 12'9"
Area: 117 sq. ft
Counted as living area: Yes

Heated: Yes
Finished: Yes
Enclosed: Yes
Contiguous: Yes
Permitted: Yes
Wet space: No
Addition: No
Conversion: No

4 Floor 1 - Hall

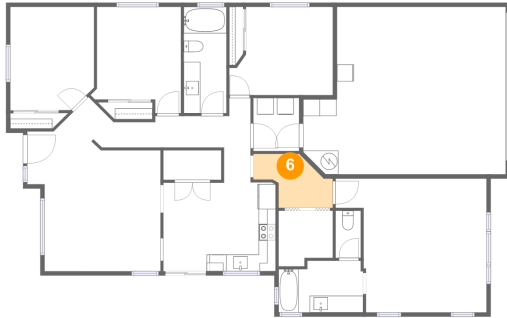
Dimensions: 9'6" x 4'11"
Area: 34 sq. ft
Counted as living area: Yes

Heated: Yes
Finished: Yes
Enclosed: Yes
Contiguous: Yes
Permitted: Yes
Wet space: No
Addition: No
Conversion: No

5 Floor 1 - Garage

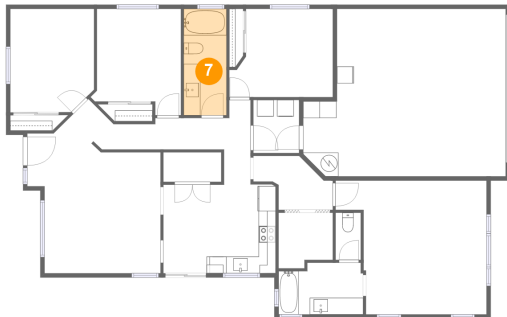
Dimensions: 24'3" x 20'0"
Area: 437 sq. ft
Counted as living area: No

Heated: No
Finished: No
Enclosed: Yes
Contiguous: Yes
Permitted: Yes
Wet space: No
Addition: No
Conversion: No

6595 Richards Ave,Santa Fe,NM,US**6 Floor 1 - Hall**

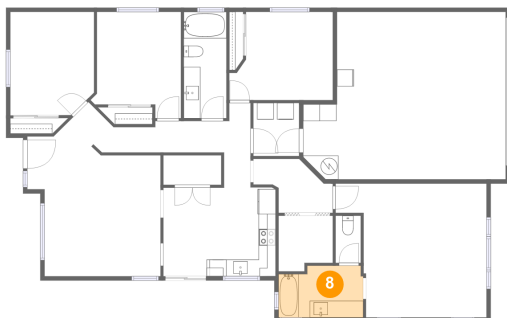
Dimensions: 8'1" x 6'6"
Area: 44 sq. ft
Counted as living area: Yes

Heated: Yes
Finished: Yes
Enclosed: Yes
Contiguous: Yes
Permitted: Yes
Wet space: No
Addition: No
Conversion: No

7 Floor 1 - Bath

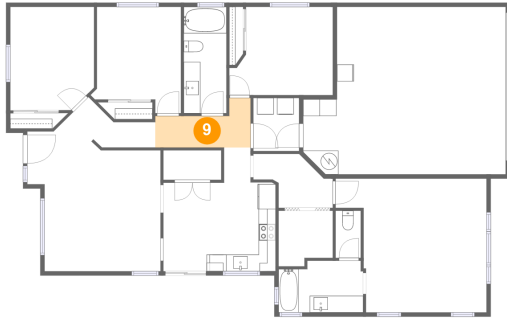
Dimensions: 5'1" x 12'9"
Area: 65 sq. ft
Counted as living area: Yes

Heated: Yes
Finished: Yes
Enclosed: Yes
Contiguous: Yes
Permitted: Yes
Wet space: Yes
Addition: No
Conversion: No

8 Floor 1 - Bath

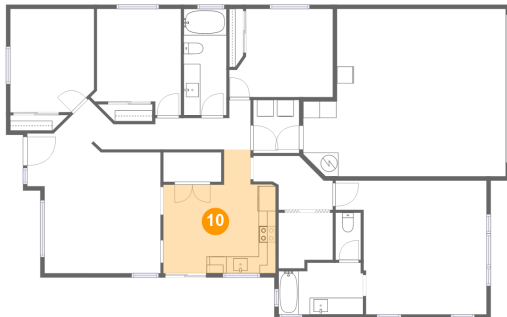
Dimensions: 10'2" x 6'2"
Area: 59 sq. ft
Counted as living area: Yes

Heated: Yes
Finished: Yes
Enclosed: Yes
Contiguous: Yes
Permitted: Yes
Wet space: Yes
Addition: No
Conversion: No

6595 Richards Ave, Santa Fe, NM, US**9 Floor 1 - Hall**

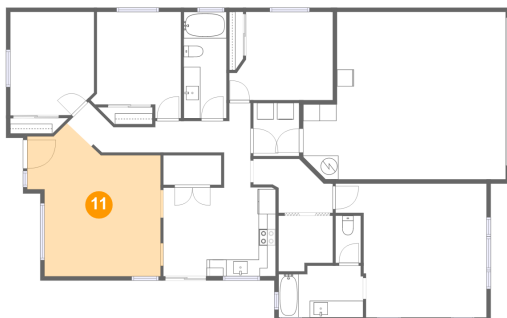
Dimensions: 11'5" x 5'11"
Area: 48 sq. ft
Counted as living area: Yes

Heated: Yes
Finished: Yes
Enclosed: Yes
Contiguous: Yes
Permitted: Yes
Wet space: No
Addition: No
Conversion: No

10 Floor 1 - Eat-in Kitchen

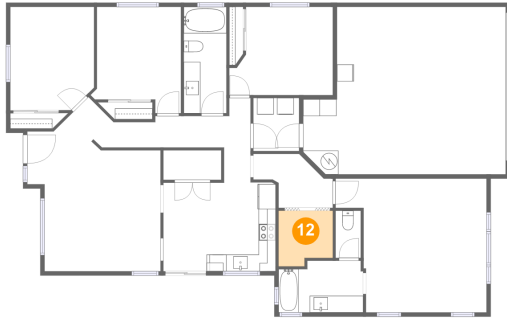
Dimensions: 13'5" x 14'10"
Area: 156 sq. ft
Counted as living area: Yes

Heated: Yes
Finished: Yes
Enclosed: Yes
Contiguous: Yes
Permitted: Yes
Wet space: No
Addition: No
Conversion: No

11 Floor 1 - Living Room

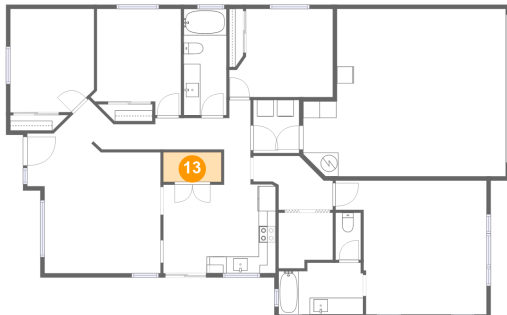
Dimensions: 15'11" x 18'3"
Area: 231 sq. ft
Counted as living area: Yes

Heated: Yes
Finished: Yes
Enclosed: Yes
Contiguous: Yes
Permitted: Yes
Wet space: No
Addition: No
Conversion: No

6595 Richards Ave, Santa Fe, NM, US**12 Floor 1 - W.I.C.**

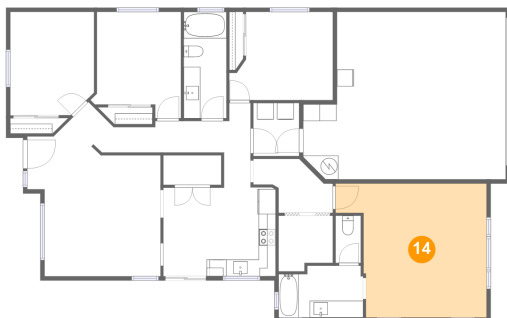
Dimensions: 6'6" x 6'8"
Area: 40 sq. ft
Counted as living area: Yes

Heated: Yes
Finished: Yes
Enclosed: Yes
Contiguous: Yes
Permitted: Yes
Wet space: No
Addition: No
Conversion: No

13 Floor 1 - Pantry

Dimensions: 6'11" x 3'6"
Area: 25 sq. ft
Counted as living area: Yes

Heated: Yes
Finished: Yes
Enclosed: Yes
Contiguous: Yes
Permitted: Yes
Wet space: No
Addition: No
Conversion: No

14 Floor 1 - Primary Bedroom

Dimensions: 18'1" x 16'0"
Area: 246 sq. ft
Counted as living area: Yes

Heated: Yes
Finished: Yes
Enclosed: Yes
Contiguous: Yes
Permitted: Yes
Wet space: No
Addition: No
Conversion: No

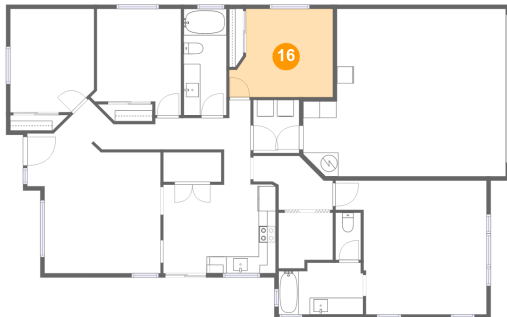
15 Floor 1 - Laundry



Dimensions: 5'6" x 6'4"
Area: 35 sq. ft
Counted as living area: Yes

Heated: Yes
Finished: Yes
Enclosed: Yes
Contiguous: Yes
Permitted: Yes
Wet space: No
Addition: No
Conversion: No

16 Floor 1 - Bedroom



Dimensions: 12'4" x 10'7"
Area: 117 sq. ft
Counted as living area: Yes

Heated: Yes
Finished: Yes
Enclosed: Yes
Contiguous: Yes
Permitted: Yes
Wet space: No
Addition: No
Conversion: No