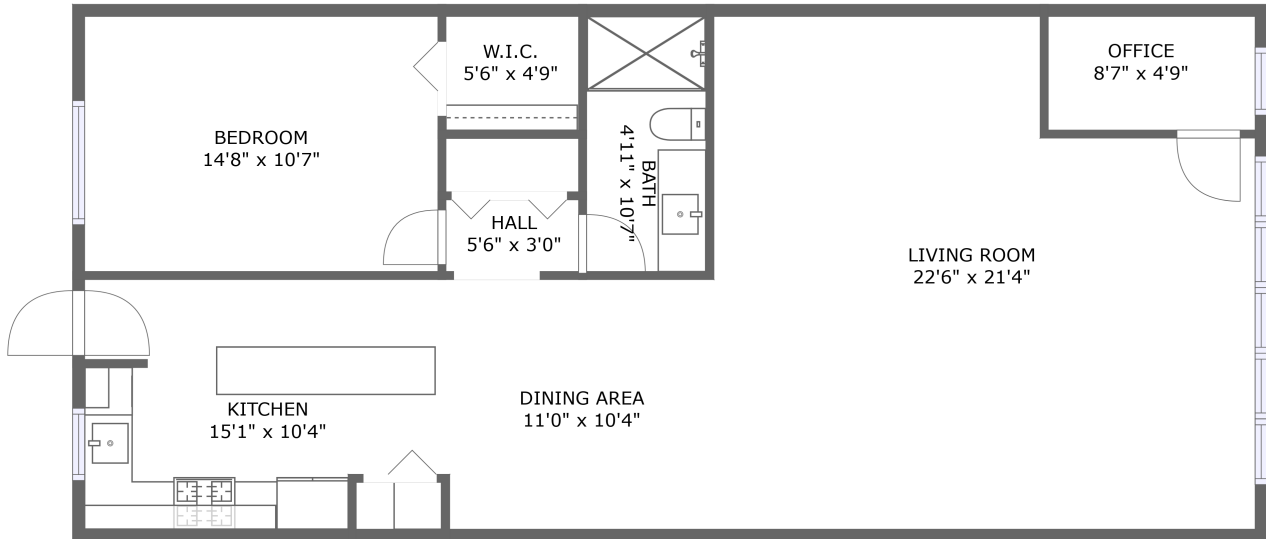






6075 Shore Boulevard South, Gulfport, Pinellas County, Florida, United States, 33707, 205



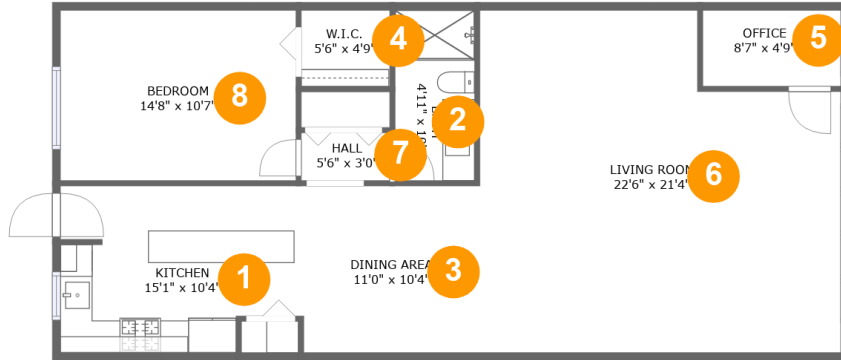
FLOOR 1

Property Summary

 **0** garages  **1** bedrooms  **1** bathrooms  **0** half baths

 **1** floors  **1,036** Gross Living Area sqft  **1,036** total sqft

6075 Shore Boulevard South, Gulfport, Pinellas County, Florida, United States, 33707, 205



Room Dimensions

Floor 1

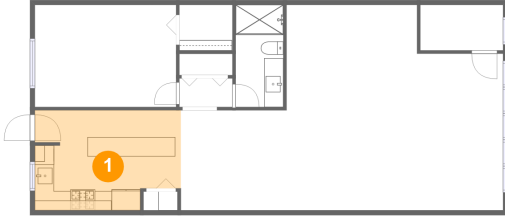
Total sqft: 1036

Living area: 1036

#	Room name	Dimensions	Area (sqft)	Counted as Living Area
1	Kitchen	15'1" x 10'4"	147 sq. ft	Yes
2	Bath	4'11" x 10'7"	52 sq. ft	Yes
3	Dining Area	11'0" x 10'4"	114 sq. ft	Yes
4	W.i.c.	5'6" x 4'9"	26 sq. ft	Yes
5	Office	8'7" x 4'9"	41 sq. ft	Yes
6	Living Room	22'6" x 21'4"	433 sq. ft	Yes
7	Hall	5'6" x 3'0"	16 sq. ft	Yes
8	Bedroom	14'8" x 10'7"	155 sq. ft	Yes

6075 Shore Boulevard South, Gulfport, Pinellas County, Florida, United States, 33707, 205

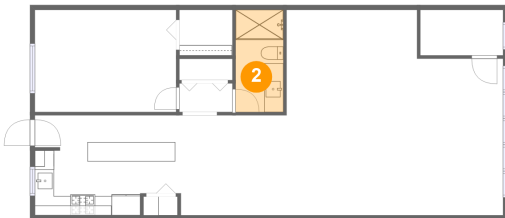
1 Floor 1 - Kitchen



Dimensions: 15'1" x 10'4"
Area: 147 sq. ft
Counted as Living Area:
Yes

Heated: Yes
Finished: Yes
Enclosed: Yes
Contiguous:
Yes
Permitted: Yes
Wet Space: No
Addition: No
Conversion: No

2 Floor 1 - Bath



Dimensions: 4'11" x 10'7"
Area: 52 sq. ft
Counted as Living Area:
Yes

Heated: Yes
Finished: Yes
Enclosed: Yes
Contiguous:
Yes
Permitted: Yes
Wet Space: Yes
Addition: No
Conversion: No

6075 Shore Boulevard South, Gulfport, Pinellas County, Florida, United States, 33707, 205

3 Floor 1 - Dining Area



Dimensions: 11'0" x 10'4"
Area: 114 sq. ft
Counted as Living Area:
Yes

Heated: Yes
Finished: Yes
Enclosed: Yes
Contiguous:
Yes
Permitted: Yes
Wet Space: No
Addition: No
Conversion: No

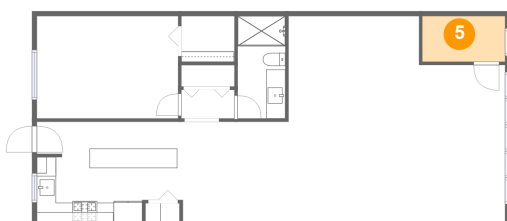
4 Floor 1 - W.i.c.



Dimensions: 5'6" x 4'9"
Area: 26 sq. ft
Counted as Living Area:
Yes

Heated: Yes
Finished: Yes
Enclosed: Yes
Contiguous:
Yes
Permitted: Yes
Wet Space: No
Addition: No
Conversion: No

5 Floor 1 - Office



Dimensions: 8'7" x 4'9"
Area: 41 sq. ft
Counted as Living Area:
Yes

Heated: Yes
Finished: Yes
Enclosed: Yes
Contiguous:
Yes
Permitted: Yes
Wet Space: No
Addition: No
Conversion: No

6075 Shore Boulevard South, Gulfport, Pinellas County, Florida, United States, 33707, 205

6 Floor 1 - Living Room



Dimensions: 22'6" x 21'4"
Area: 433 sq. ft
Counted as Living Area:
Yes

Heated: Yes
Finished: Yes
Enclosed: Yes
Contiguous:
Yes
Permitted: Yes
Wet Space: No
Addition: No
Conversion: No

7 Floor 1 - Hall



Dimensions: 5'6" x 3'0"
Area: 16 sq. ft
Counted as Living Area:
Yes

Heated: Yes
Finished: Yes
Enclosed: Yes
Contiguous:
Yes
Permitted: Yes
Wet Space: No
Addition: No
Conversion: No

8 Floor 1 - Bedroom



Dimensions: 14'8" x 10'7"
Area: 155 sq. ft
Counted as Living Area:
Yes

Heated: Yes
Finished: Yes
Enclosed: Yes
Contiguous:
Yes
Permitted: Yes
Wet Space: No
Addition: No
Conversion: No