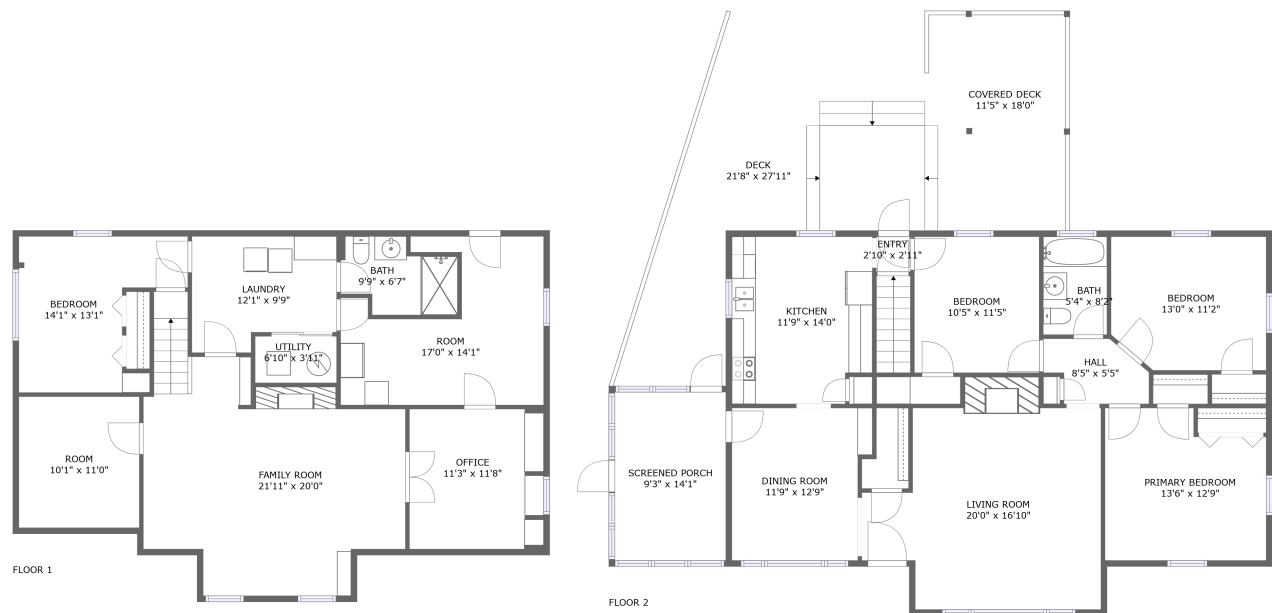


Home report

2626 Oregon Avenue Southwest, Roanoke, Virginia 24015,
United States



Total Area: 2241 sq. ft

Below Ground: 969 sq. ft, Floor 2: 1272 sq. ft

Excluded: Room 181 sq. ft, Utility 27 sq. ft, Screened porch 131 sq. ft, Covered deck 207 sq. ft, Deck 445 sq. ft, Walls: 168 sq. ft

Property summary

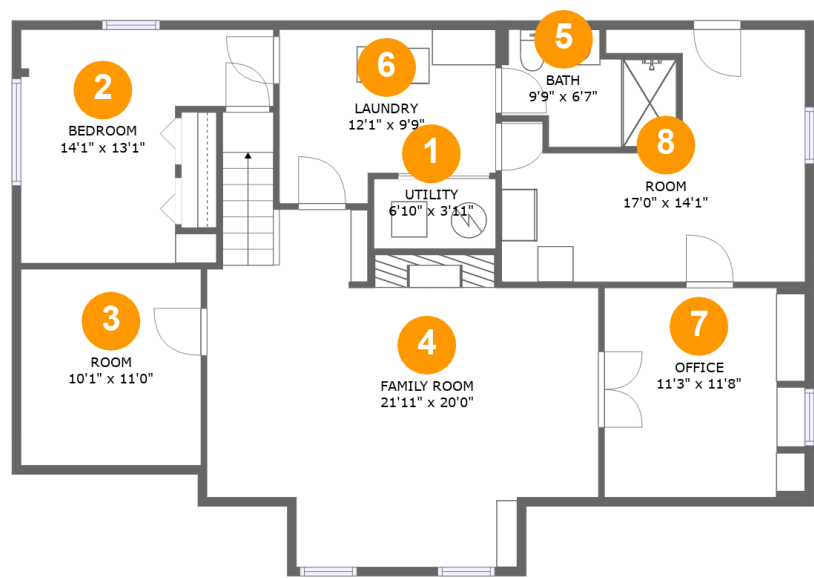
 2 Floors

 4 Bedrooms

 2 Bathrooms

Home report

2626 Oregon Avenue Southwest, Roanoke, Virginia 24015,
United States



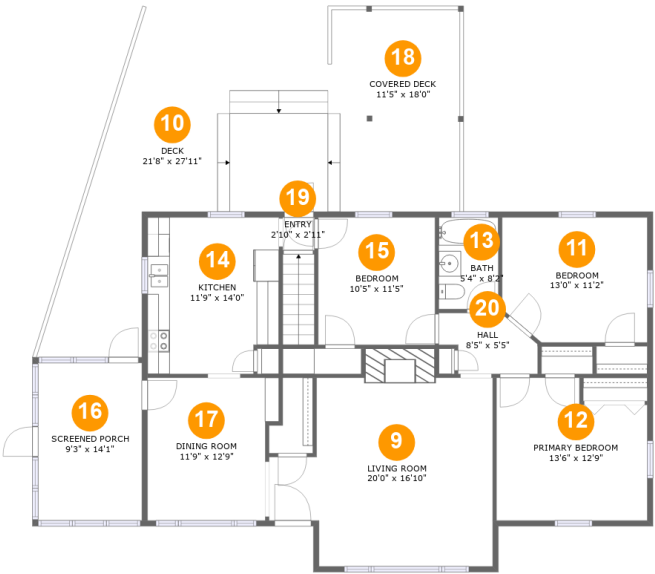
Room dimensions

Floor 1 Below ground Total:969sqft Excluded: 208sqft

#		Max Dimensions	sqft	Included
1	Utility	6'10" x 3'11"	27 sq. ft	No
2	Bedroom	14'1" x 13'1"	140 sq. ft	Yes
3	Room	10'1" x 11'0"	110 sq. ft	Yes
4	Family Room	21'11" x 20'0"	369 sq. ft	Yes
5	Bath	9'9" x 6'7"	53 sq. ft	Yes
6	Laundry	12'1" x 9'9"	105 sq. ft	Yes
7	Office	11'3" x 11'8"	131 sq. ft	Yes
8	Room	17'0" x 14'1"	179 sq. ft	No

Home report

2626 Oregon Avenue Southwest, Roanoke, Virginia 24015,
United States



Room dimensions

Floor 2 Total:1272sqft Excluded: 783sqft

#		Max Dimensions	sqft	Included
9	Living Room	20'0" x 16'10"	305 sq. ft	Yes
10	Deck	21'8" x 27'11"	445 sq. ft	No
11	Bedroom	13'0" x 11'2"	140 sq. ft	Yes
12	Primary Bedroom	13'6" x 12'9"	157 sq. ft	Yes
13	Bath	5'4" x 8'2"	44 sq. ft	Yes
14	Kitchen	11'9" x 14'0"	158 sq. ft	Yes
15	Bedroom	10'5" x 11'5"	119 sq. ft	Yes
16	Screened Porch	9'3" x 14'1"	131 sq. ft	No
17	Dining Room	11'9" x 12'9"	139 sq. ft	Yes
18	Covered Deck	11'5" x 18'0"	207 sq. ft	No
19	Entry	2'10" x 2'11"	8 sq. ft	Yes

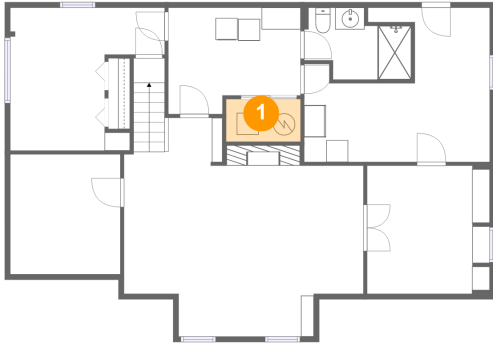
Home report

2626 Oregon Avenue Southwest, Roanoke, Virginia 24015,
United States

#		Max Dimensions	sqft	Included
20	Hall	8'5" x 5'5"	39 sq. ft	Yes

2626 Oregon Avenue Southwest, Roanoke, Virginia 24015,
United States

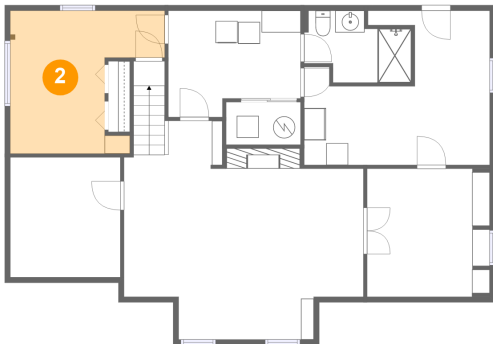
1 Floor 1 - Utility



Max Dimensions: 6'10" x 3'11"
Calculated Area: 27 sq. ft
Included: No

Heated: Yes
Finished: No
Enclosed: Yes
Contiguous: Yes
Permitted: Yes
Wet space: No
Addition: No
Conversion: No

2 Floor 1 - Bedroom



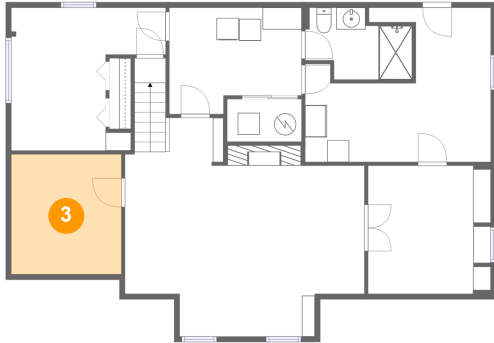
Max Dimensions: 14'1" x 13'1"
Calculated Area: 140 sq. ft
Included: Yes

Heated: Yes
Finished: Yes
Enclosed: Yes
Contiguous: Yes
Permitted: Yes
Wet space: No
Addition: No
Conversion: No

Home report

2626 Oregon Avenue Southwest, Roanoke, Virginia 24015,
United States

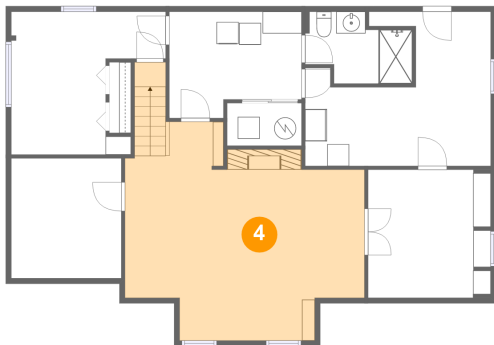
3 Floor 1 - Room



Max Dimensions: 10'1" x 11'0"
Calculated Area: 110 sq. ft
Included: Yes

Heated: Yes
Finished: Yes
Enclosed: Yes
Contiguous: Yes
Permitted: Yes
Wet space: No
Addition: No
Conversion: No

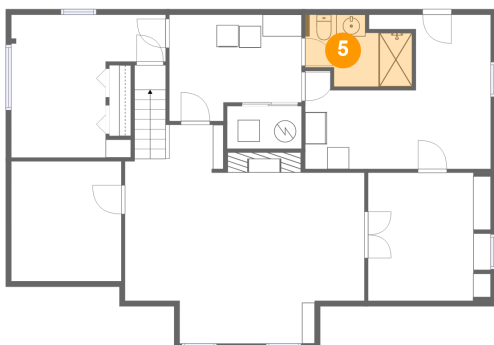
4 Floor 1 - Family Room



Max Dimensions: 21'11" x 20'0"
Calculated Area: 369 sq. ft
Included: Yes

Heated: Yes
Finished: Yes
Enclosed: Yes
Contiguous: Yes
Permitted: Yes
Wet space: No
Addition: No
Conversion: No

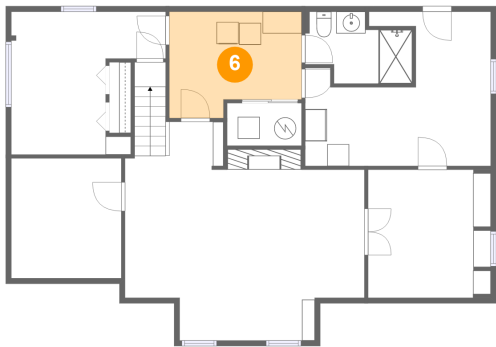
5 Floor 1 - Bath



Max Dimensions: 9'9" x 6'7"
Calculated Area: 53 sq. ft
Included: Yes

Heated: Yes
Finished: Yes
Enclosed: Yes
Contiguous: Yes
Permitted: Yes
Wet space: Yes
Addition: No
Conversion: No

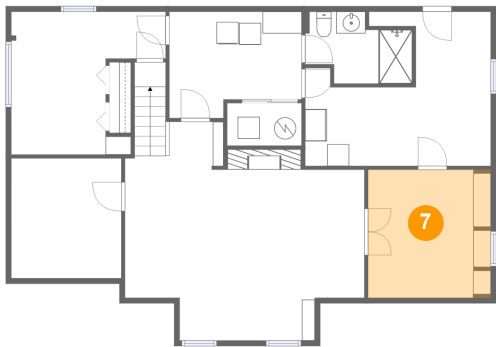
6 Floor 1 - Laundry



Max Dimensions: 12'1" x 9'9"
Calculated Area: 105 sq. ft
Included: Yes

Heated: Yes
Finished: Yes
Enclosed: Yes
Contiguous: Yes
Permitted: Yes
Wet space: No
Addition: No
Conversion: No

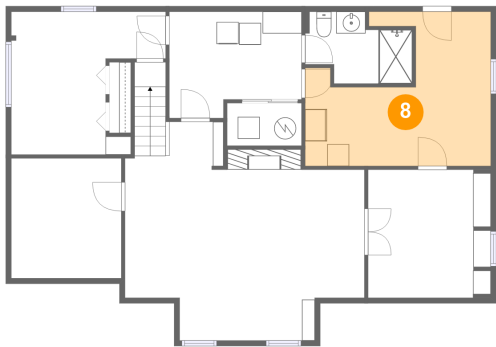
7 Floor 1 - Office



Max Dimensions: 11'3" x 11'8"
Calculated Area: 131 sq. ft
Included: Yes

Heated: Yes
Finished: Yes
Enclosed: Yes
Contiguous: Yes
Permitted: Yes
Wet space: No
Addition: No
Conversion: No

8 Floor 1 - Room

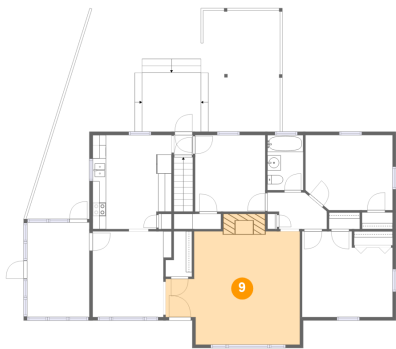


Max Dimensions: 17'0" x 14'1"
Calculated Area: 179 sq. ft
Included: No

Heated: Yes
Finished: No
Enclosed: Yes
Contiguous: Yes
Permitted: Yes
Wet space: No
Addition: No
Conversion: No

2626 Oregon Avenue Southwest, Roanoke, Virginia 24015,
United States

9 Floor 2 - Living Room



Max Dimensions: 20'0" x 16'10"
Calculated Area: 305 sq. ft
Included: Yes

Heated: Yes
Finished: Yes
Enclosed: Yes
Contiguous: Yes
Permitted: Yes
Wet space: No
Addition: No
Conversion: No

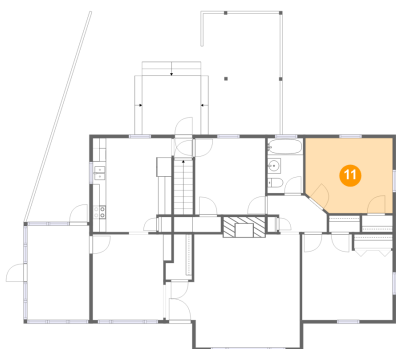
10 Floor 2 - Deck



Max Dimensions: 21'8" x 27'11"
Calculated Area: 445 sq. ft
Included: No

Heated: No
Finished: Yes
Enclosed: No
Contiguous: Yes
Permitted: Yes
Wet space: No
Addition: No
Conversion: No

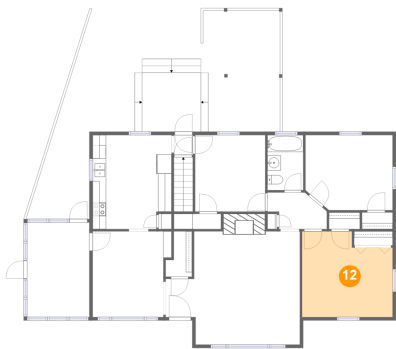
11 Floor 2 - Bedroom



Max Dimensions: 13'0" x 11'2"
Calculated Area: 140 sq. ft
Included: Yes

Heated: Yes
Finished: Yes
Enclosed: Yes
Contiguous: Yes
Permitted: Yes
Wet space: No
Addition: No
Conversion: No

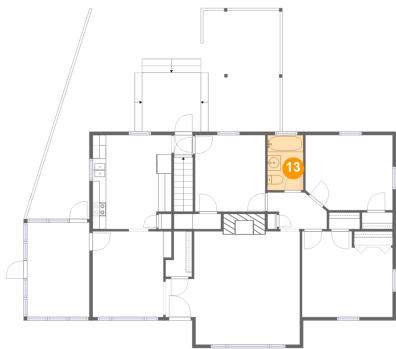
12 Floor 2 - Primary Bedroom



Max Dimensions: 13'6" x 12'9"
Calculated Area: 157 sq. ft
Included: Yes

Heated: Yes
Finished: Yes
Enclosed: Yes
Contiguous: Yes
Permitted: Yes
Wet space: No
Addition: No
Conversion: No

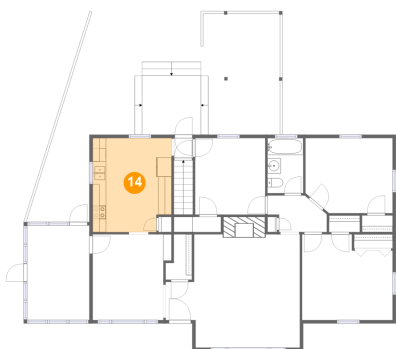
13 Floor 2 - Bath



Max Dimensions: 5'4" x 8'2"
Calculated Area: 44 sq. ft
Included: Yes

Heated: Yes
Finished: Yes
Enclosed: Yes
Contiguous: Yes
Permitted: Yes
Wet space: Yes
Addition: No
Conversion: No

14 Floor 2 - Kitchen

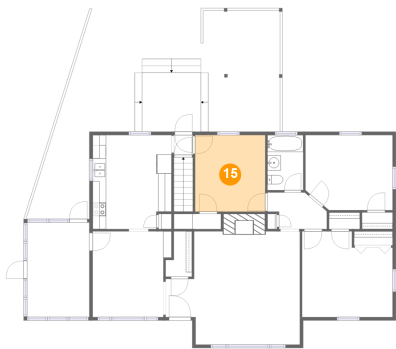


Max Dimensions: 11'9" x 14'0"
Calculated Area: 158 sq. ft
Included: Yes

Heated: Yes
Finished: Yes
Enclosed: Yes
Contiguous: Yes
Permitted: Yes
Wet space: No
Addition: No
Conversion: No

2626 Oregon Avenue Southwest, Roanoke, Virginia 24015,
United States

15 Floor 2 - Bedroom



Max Dimensions: 10'5" x 11'5"
Calculated Area: 119 sq. ft
Included: Yes

Heated: Yes
Finished: Yes
Enclosed: Yes
Contiguous: Yes
Permitted: Yes
Wet space: No
Addition: No
Conversion: No

16 Floor 2 - Screened Porch



Max Dimensions: 9'3" x 14'1"
Calculated Area: 131 sq. ft
Included: No

Heated: No
Finished: Yes
Enclosed: No
Contiguous: Yes
Permitted: Yes
Wet space: No
Addition: No
Conversion: No

17 Floor 2 - Dining Room

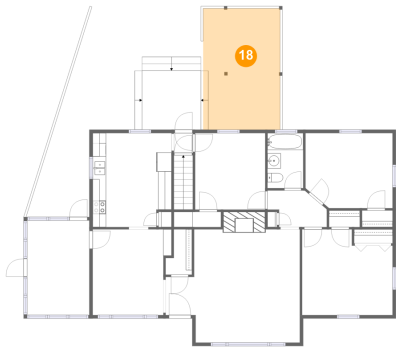


Max Dimensions: 11'9" x 12'9"
Calculated Area: 139 sq. ft
Included: Yes

Heated: Yes
Finished: Yes
Enclosed: Yes
Contiguous: Yes
Permitted: Yes
Wet space: No
Addition: No
Conversion: No

2626 Oregon Avenue Southwest, Roanoke, Virginia 24015,
United States

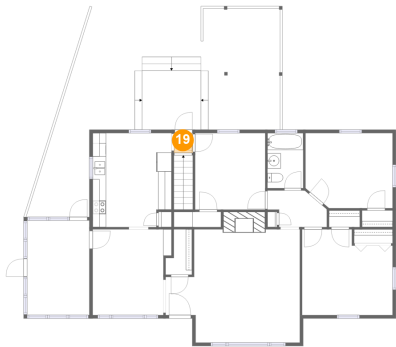
18 Floor 2 - Covered Deck



Max Dimensions: 11'5" x 18'0"
Calculated Area: 207 sq. ft
Included: No

Heated: No
Finished: Yes
Enclosed: No
Contiguous: Yes
Permitted: Yes
Wet space: No
Addition: No
Conversion: No

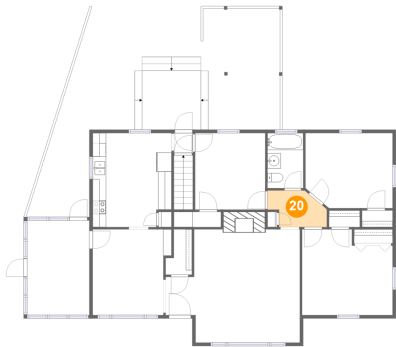
19 Floor 2 - Entry



Max Dimensions: 2'10" x 2'11"
Calculated Area: 8 sq. ft
Included: Yes

Heated: Yes
Finished: Yes
Enclosed: Yes
Contiguous: Yes
Permitted: Yes
Wet space: No
Addition: No
Conversion: No

20 Floor 2 - Hall



Max Dimensions: 8'5" x 5'5"
Calculated Area: 39 sq. ft
Included: Yes

Heated: Yes
Finished: Yes
Enclosed: Yes
Contiguous: Yes
Permitted: Yes
Wet space: No
Addition: No
Conversion: No