

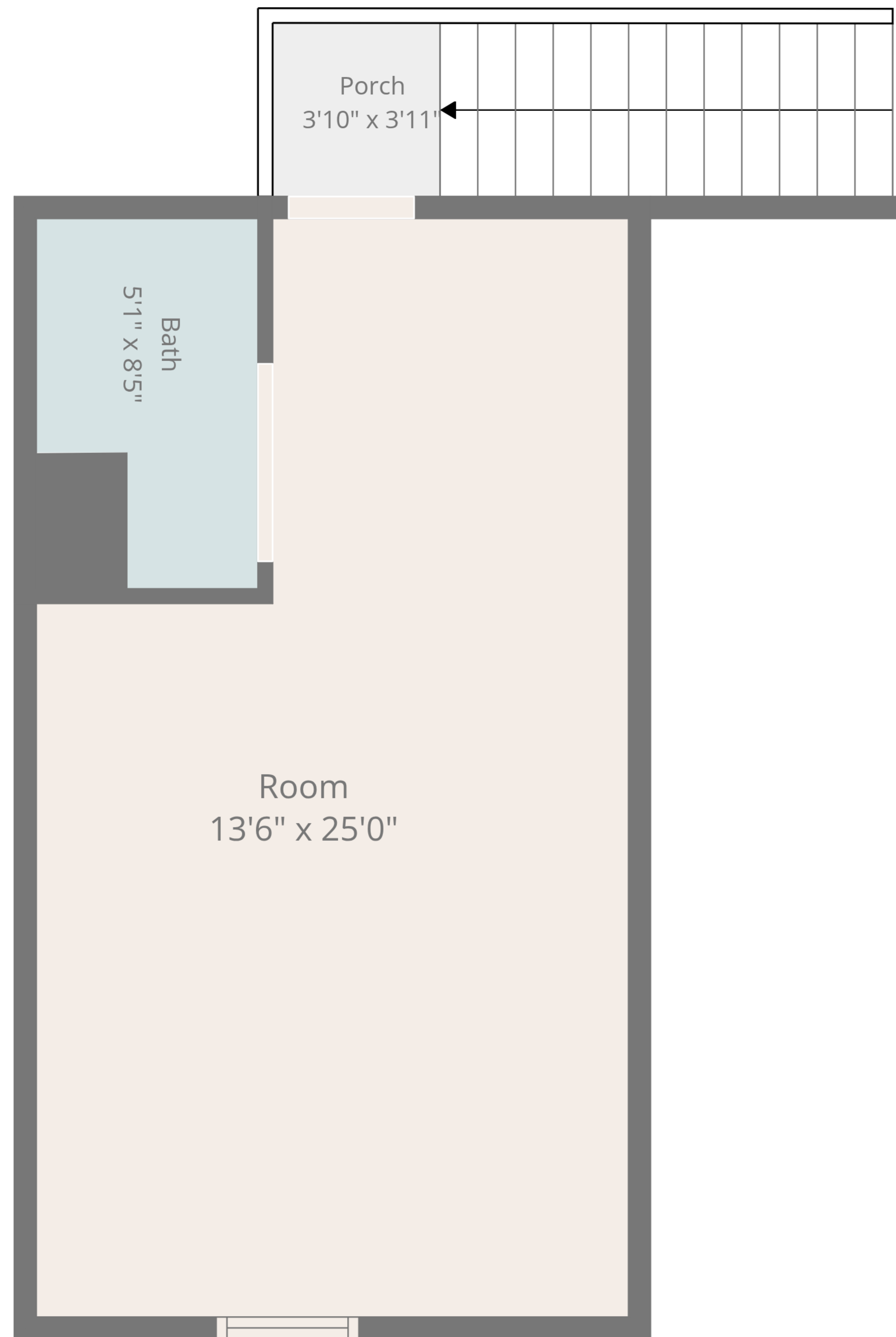
Total: 2599 sq. ft

Basement: 841 sq. Ft, 1st Floor: 841 sq. Ft, 2nd Floor: 282 sq. Ft, 3rd Floor: 635 sq. ft
Excluded Areas: Patio: 606 sq. Ft, Garage: 625 sq. Ft, Deck: 328 sq. Ft,
Porch: 480 sq. Ft, Low Ceiling: 254 sq. Ft, Walls: 272 sq. ft



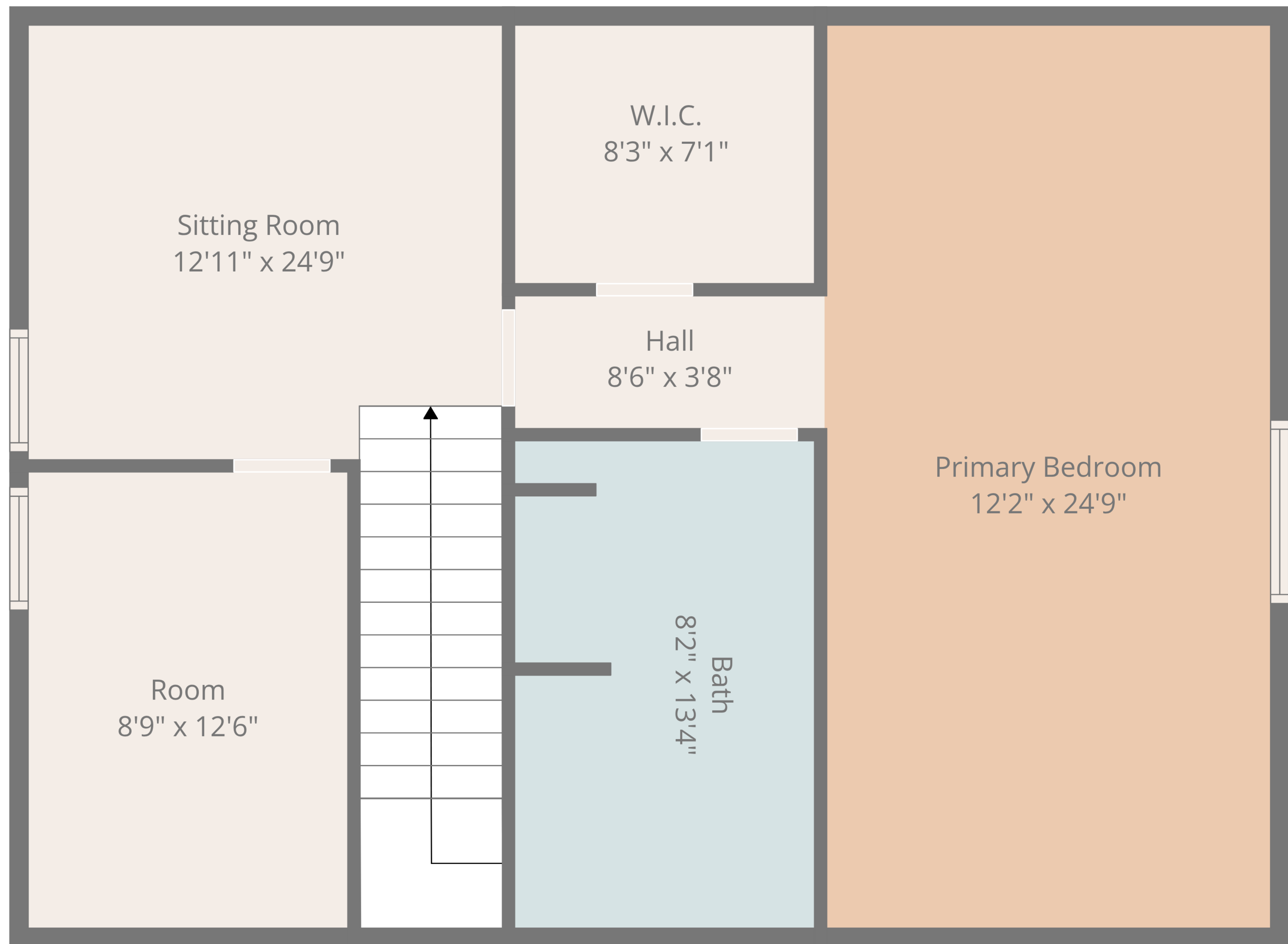
Total: 2599 sq. ft

Basement: 841 sq. Ft, 1st Floor: 841 sq. Ft, 2nd Floor: 282 sq. Ft, 3rd Floor: 635 sq. ft
 Excluded Areas: Patio: 606 sq. Ft, Garage: 625 sq. Ft, Deck: 328 sq. Ft,
 Porch: 480 sq. Ft, Low Ceiling: 254 sq. Ft, Walls: 272 sq. ft



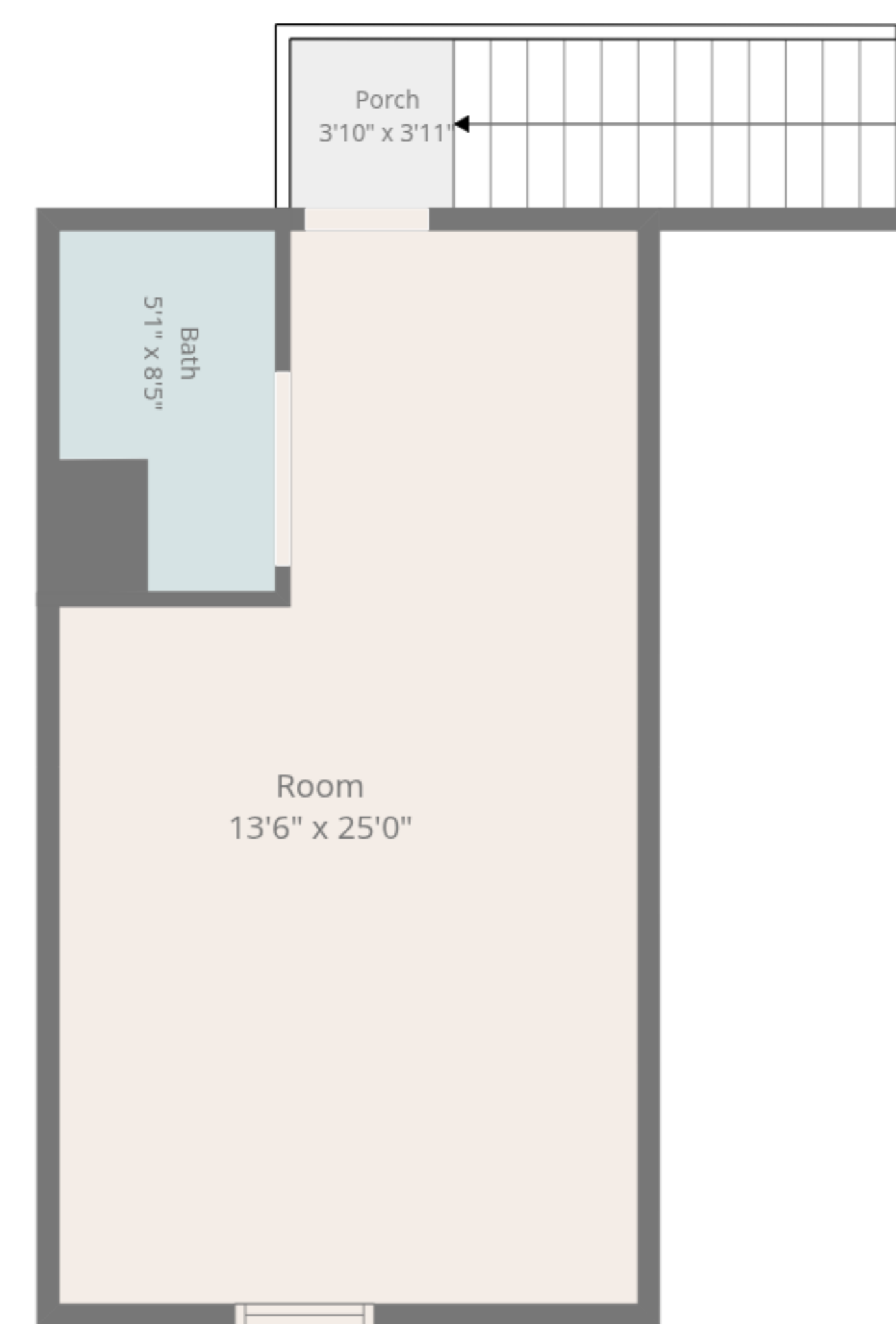
Total: 2599 sq. ft

Basement: 841 sq. Ft, 1st Floor: 841 sq. Ft, 2nd Floor: 282 sq. Ft, 3rd Floor: 635 sq. ft
Excluded Areas: Patio: 606 sq. Ft, Garage: 625 sq. Ft, Deck: 328 sq. Ft,
Porch: 480 sq. Ft, Low Ceiling: 254 sq. Ft, Walls: 272 sq. ft

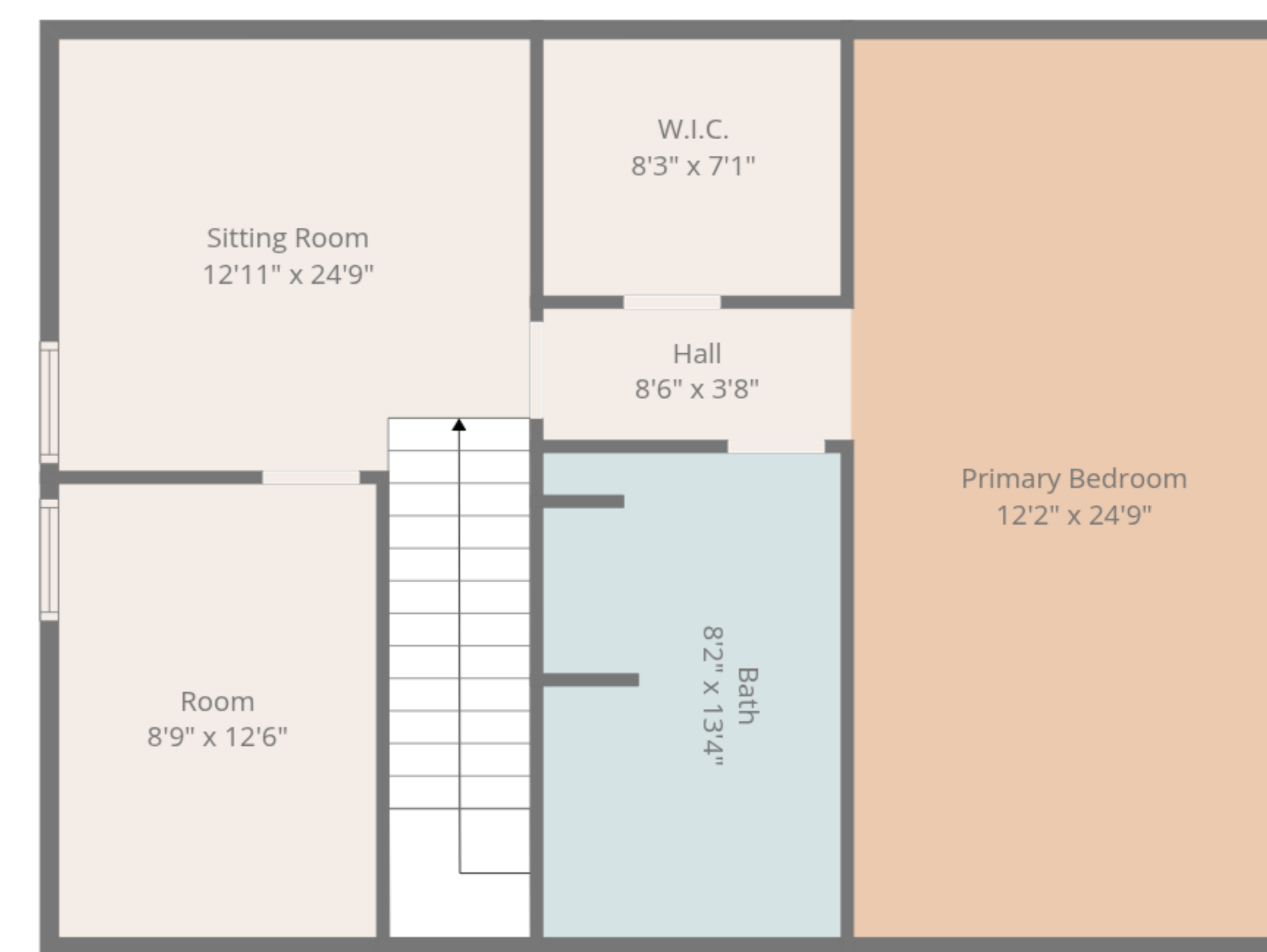


Total: 2599 sq. ft

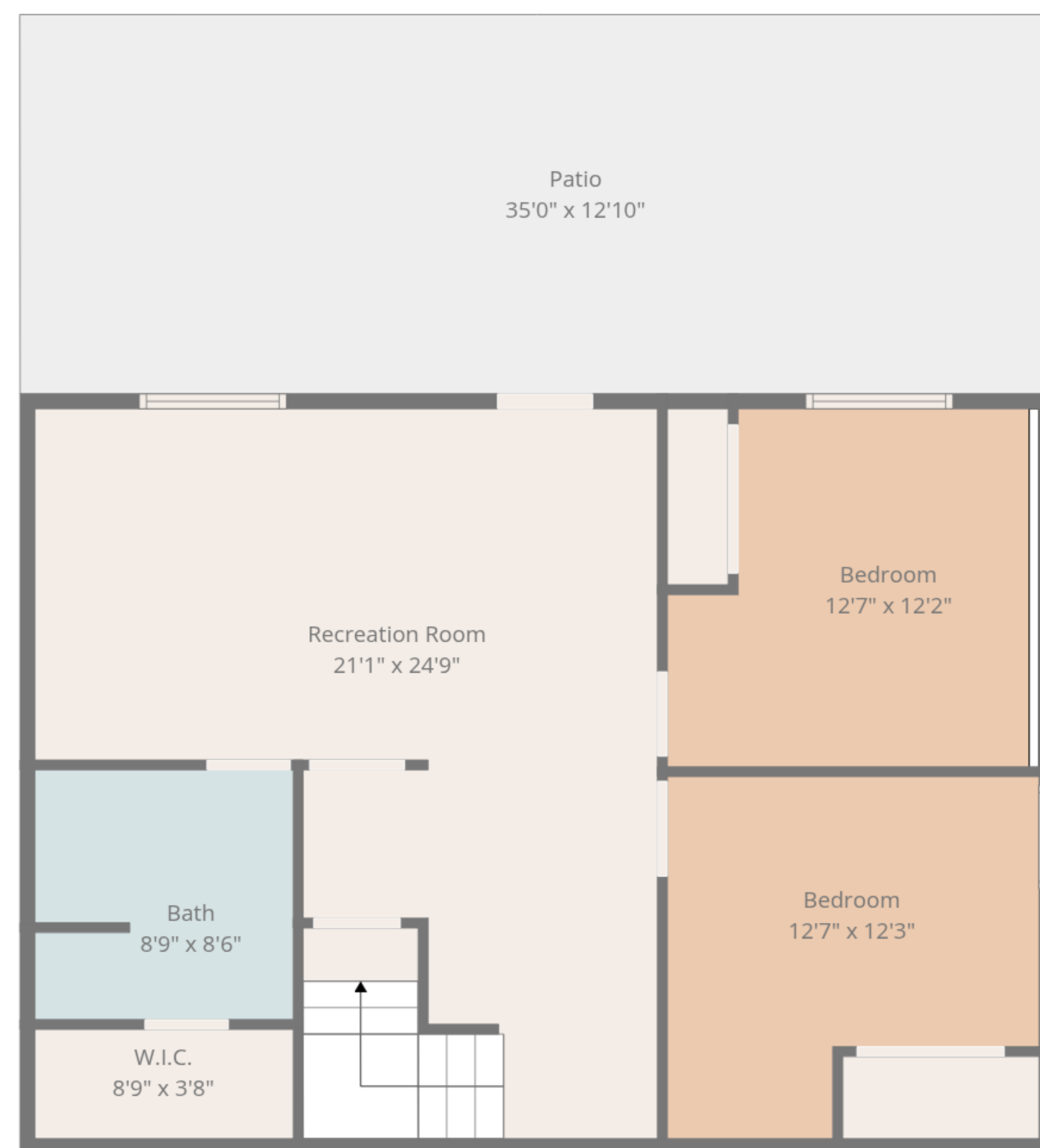
Basement: 841 sq. Ft, 1st Floor: 841 sq. Ft, 2nd Floor: 282 sq. Ft, 3rd Floor: 635 sq. ft
Excluded Areas: Patio: 606 sq. Ft, Garage: 625 sq. Ft, Deck: 328 sq. Ft,
Porch: 480 sq. Ft, Low Ceiling: 254 sq. Ft, Walls: 272 sq. ft



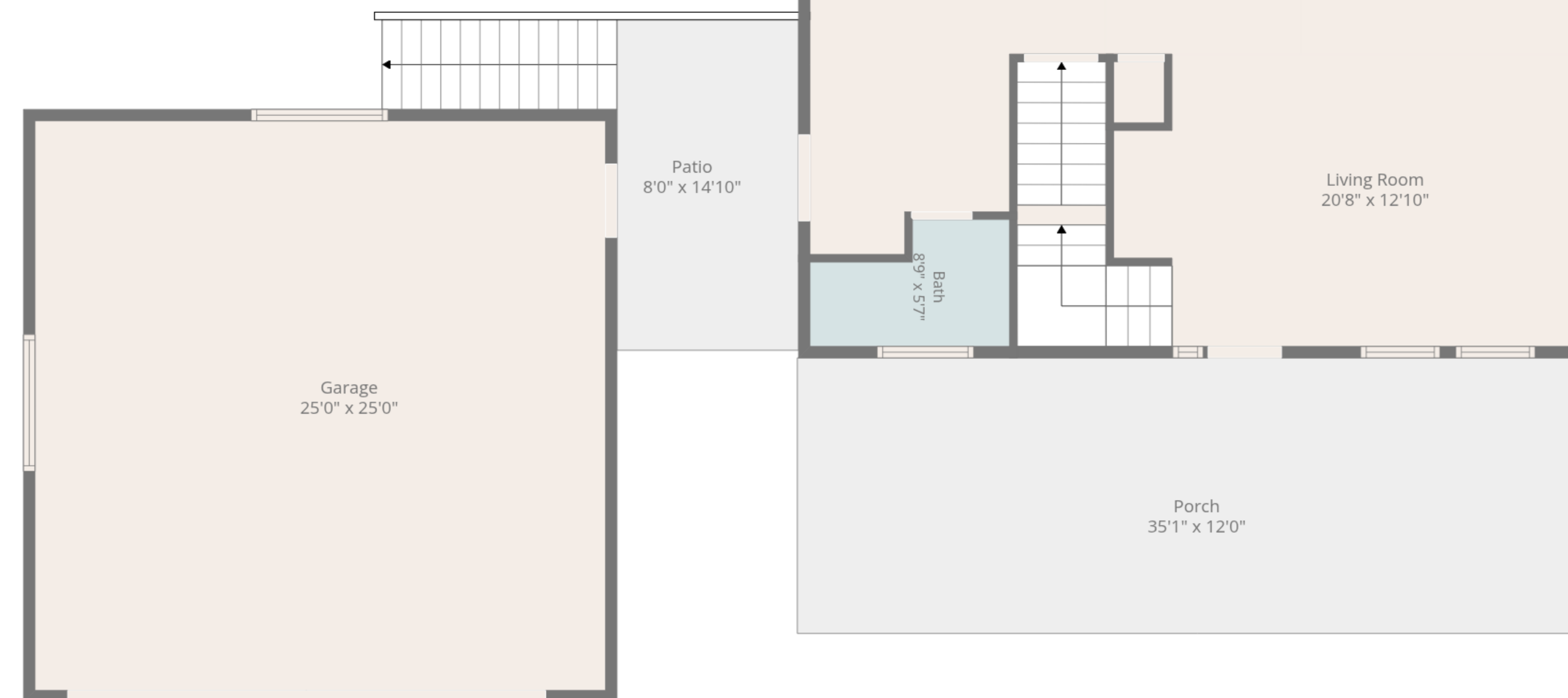
2nd Floor



3rd Floor



Basement



1st Floor

Total: 2599 sq. ft

Basement: 841 sq. Ft, 1st Floor: 841 sq. Ft, 2nd Floor: 282 sq. Ft, 3rd Floor: 635 sq. ft
 Excluded Areas: Patio: 606 sq. Ft, Garage: 625 sq. Ft, Deck: 328 sq. Ft,
 Porch: 480 sq. Ft, Low Ceiling: 254 sq. Ft, Walls: 272 sq. ft