

Home report

145 West Court, Batavia, Kane County, Illinois, United States, 60510



Total Area: 2845 sq. ft
Below Ground: 427 sq. ft, Floor 2: 1197 sq. ft, Floor 3: 1221 sq. ft
Excluded: Room 142 sq. ft, Basement 495 sq. ft, Garage 411 sq. ft, Embedded window 4 sq. ft, Fireplace 8 sq. ft, Low Ceiling 24 sq. ft, Open to below 382 sq. ft, Walls: 262 sq. ft

Property summary

 **3** Floors

 **4** Bedrooms

 **2** Bathrooms

Home report

**145 West Court, Batavia, Kane County, Illinois, United States,
60510**



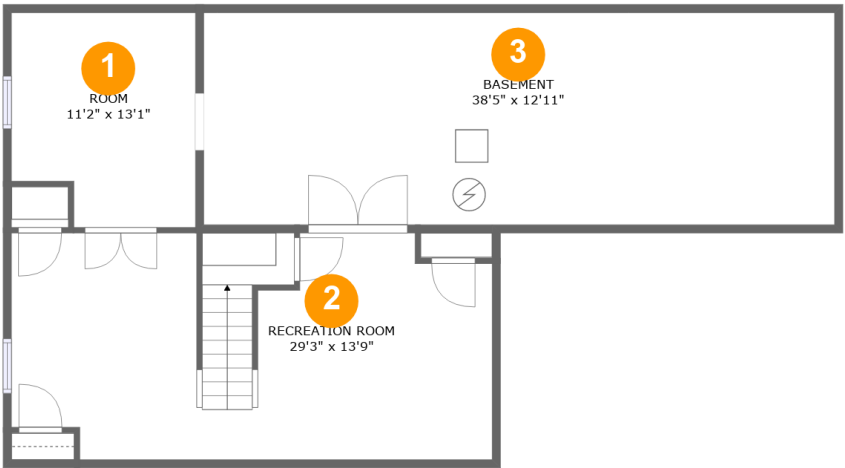
1
Half baths



1
Garages

Home report

145 West Court, Batavia, Kane County, Illinois, United States,
60510



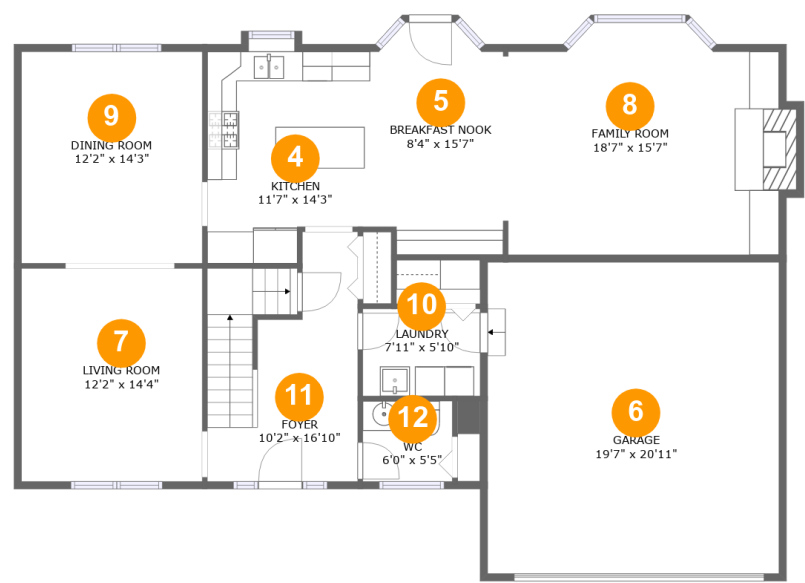
Room dimensions

Floor 1 Below ground Total:427sqft Excluded: 637sqft

#		Max Dimensions	sqft	Included
1	Room	11'2" x 13'1"	136 sq. ft	No
2	Recreation Room	29'3" x 13'9"	380 sq. ft	Yes
3	Basement	38'5" x 12'11"	495 sq. ft	No

Home report

145 West Court, Batavia, Kane County, Illinois, United States, 60510



Room dimensions

Floor 2 Total:1197sqft Excluded: 423sqft

#		Max Dimensions	sqft	Included
4	Kitchen	11'7" x 14'3"	151 sq. ft	Yes
5	Breakfast Nook	8'4" x 15'7"	122 sq. ft	Yes
6	Garage	19'7" x 20'11"	411 sq. ft	No
7	Living Room	12'2" x 14'4"	174 sq. ft	Yes
8	Family Room	18'7" x 15'7"	275 sq. ft	Yes
9	Dining Room	12'2" x 14'3"	173 sq. ft	Yes
10	Laundry	7'11" x 5'10"	46 sq. ft	Yes
11	Foyer	10'2" x 16'10"	151 sq. ft	Yes
12	WC	6'0" x 5'5"	33 sq. ft	Yes

**145 West Court, Batavia, Kane County, Illinois, United States,
60510**



Total:1221sqft Excluded: 406sqft

Scan captured on Wed, 25 Jun 2025 22:49:30 GMT

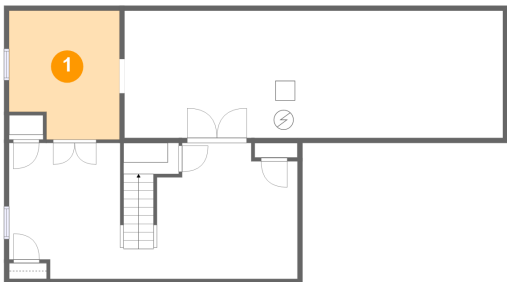
Home report

145 West Court, Batavia, Kane County, Illinois, United States,
60510

#		Max Dimensions	sqft	Included
24	Bedroom	10'5" x 12'11"	135 sq. ft	Yes

145 West Court, Batavia, Kane County, Illinois, United States, 60510

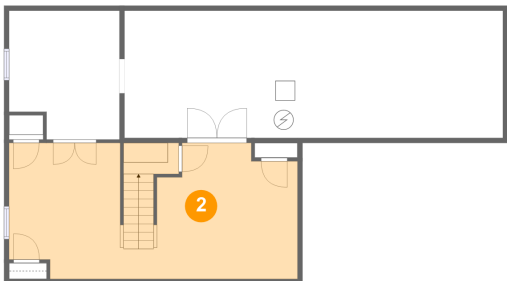
1 Floor 1 - Room



Max Dimensions: 11'2" x 13'1"
Calculated Area: 136 sq. ft
Included: No

Heated: Yes
Finished: No
Enclosed: Yes
Contiguous: Yes
Permitted: Yes
Wet space: No
Addition: No
Conversion: No

2 Floor 1 - Recreation Room



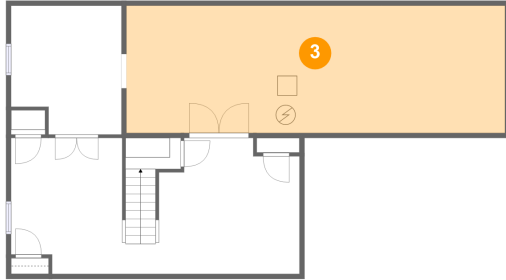
Max Dimensions: 29'3" x 13'9"
Calculated Area: 380 sq. ft
Included: Yes

Heated: Yes
Finished: Yes
Enclosed: Yes
Contiguous: Yes
Permitted: Yes
Wet space: No
Addition: No
Conversion: No

Home report

145 West Court, Batavia, Kane County, Illinois, United States,
60510

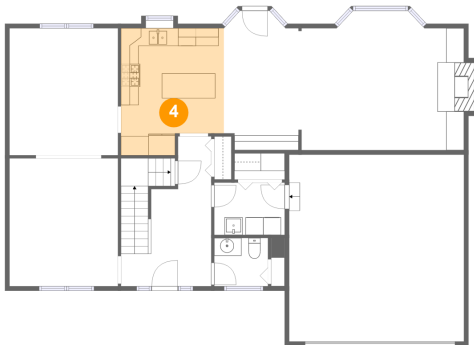
3 Floor 1 - Basement



Max Dimensions: 38'5" x 12'11"
Calculated Area: 495 sq. ft
Included: No

Heated: Yes
Finished: No
Enclosed: Yes
Contiguous: Yes
Permitted: Yes
Wet space: No
Addition: No
Conversion: No

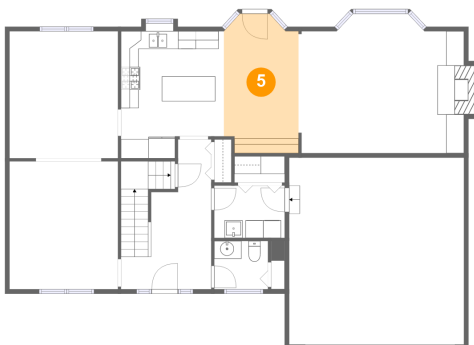
4 Floor 2 - Kitchen



Max Dimensions: 11'7" x 14'3"
Calculated Area: 151 sq. ft
Included: Yes

Heated: Yes
Finished: Yes
Enclosed: Yes
Contiguous: Yes
Permitted: Yes
Wet space: No
Addition: No
Conversion: No

5 Floor 2 - Breakfast Nook

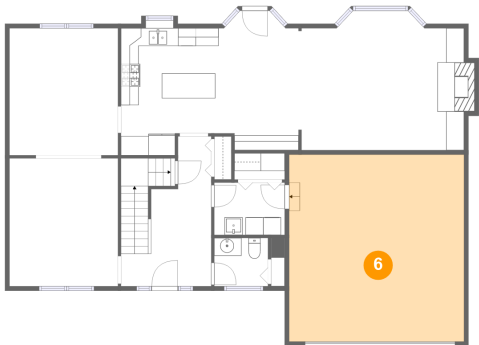


Max Dimensions: 8'4" x 15'7"
Calculated Area: 122 sq. ft
Included: Yes

Heated: Yes
Finished: Yes
Enclosed: Yes
Contiguous: Yes
Permitted: Yes
Wet space: No
Addition: No
Conversion: No

145 West Court, Batavia, Kane County, Illinois, United States, 60510

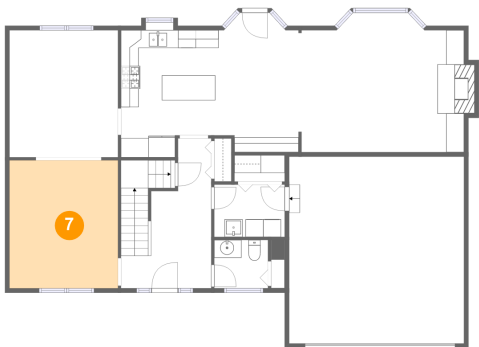
6 Floor 2 - Garage



Max Dimensions: 19'7" x 20'11"
Calculated Area: 411 sq. ft
Included: No

Heated: No
Finished: No
Enclosed: Yes
Contiguous: Yes
Permitted: Yes
Wet space: No
Addition: No
Conversion: No

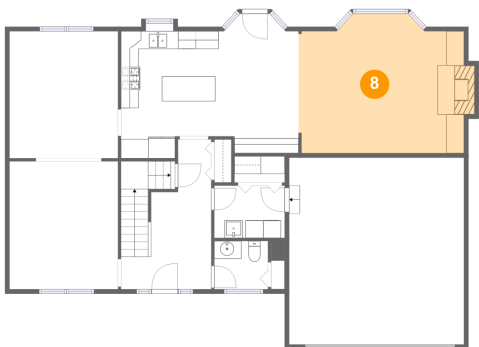
7 Floor 2 - Living Room



Max Dimensions: 12'2" x 14'4"
Calculated Area: 174 sq. ft
Included: Yes

Heated: Yes
Finished: Yes
Enclosed: Yes
Contiguous: Yes
Permitted: Yes
Wet space: No
Addition: No
Conversion: No

8 Floor 2 - Family Room

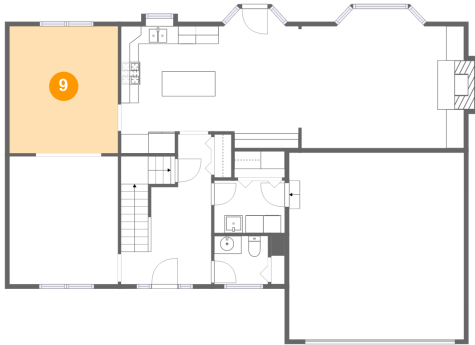


Max Dimensions: 18'7" x 15'7"
Calculated Area: 275 sq. ft
Included: Yes

Heated: Yes
Finished: Yes
Enclosed: Yes
Contiguous: Yes
Permitted: Yes
Wet space: No
Addition: No
Conversion: No

145 West Court, Batavia, Kane County, Illinois, United States,
60510

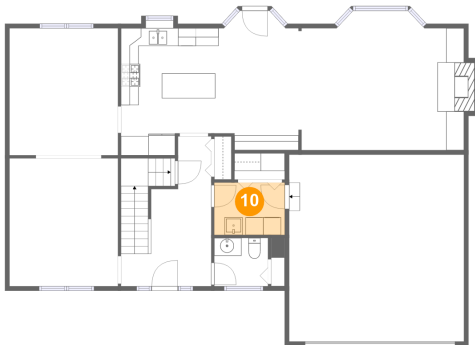
9 Floor 2 - Dining Room



Max Dimensions: 12'2" x 14'3"
Calculated Area: 173 sq. ft
Included: Yes

Heated: Yes
Finished: Yes
Enclosed: Yes
Contiguous: Yes
Permitted: Yes
Wet space: No
Addition: No
Conversion: No

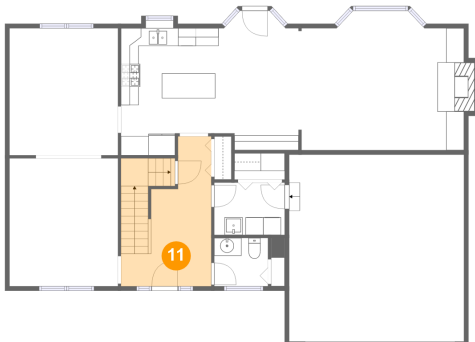
10 Floor 2 - Laundry



Max Dimensions: 7'11" x 5'10"
Calculated Area: 46 sq. ft
Included: Yes

Heated: Yes
Finished: Yes
Enclosed: Yes
Contiguous: Yes
Permitted: Yes
Wet space: No
Addition: No
Conversion: No

11 Floor 2 - Foyer



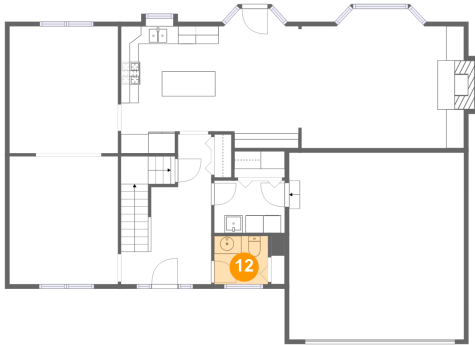
Max Dimensions: 10'2" x 16'10"
Calculated Area: 151 sq. ft
Included: Yes

Heated: Yes
Finished: Yes
Enclosed: Yes
Contiguous: Yes
Permitted: Yes
Wet space: No
Addition: No
Conversion: No

Home report

145 West Court, Batavia, Kane County, Illinois, United States,
60510

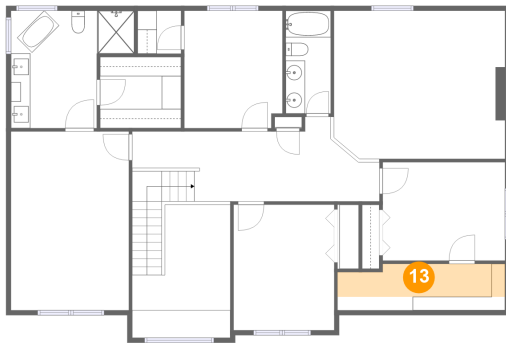
12 Floor 2 - WC



Max Dimensions: 6'0" x 5'5"
Calculated Area: 33 sq. ft
Included: Yes

Heated: Yes
Finished: Yes
Enclosed: Yes
Contiguous: Yes
Permitted: Yes
Wet space: Yes
Addition: No
Conversion: No

13 Floor 3 - W.I.C.



Max Dimensions: 17'3" x 4'9"
Calculated Area: 55 sq. ft
Included: Yes

Heated: Yes
Finished: Yes
Enclosed: Yes
Contiguous: Yes
Permitted: Yes
Wet space: No
Addition: No
Conversion: No

14 Floor 3 - Bedroom

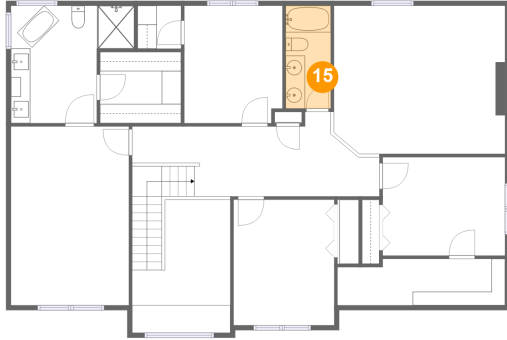


Max Dimensions: 12'8" x 10'1"
Calculated Area: 128 sq. ft
Included: Yes

Heated: Yes
Finished: Yes
Enclosed: Yes
Contiguous: Yes
Permitted: Yes
Wet space: No
Addition: No
Conversion: No

145 West Court, Batavia, Kane County, Illinois, United States,
60510

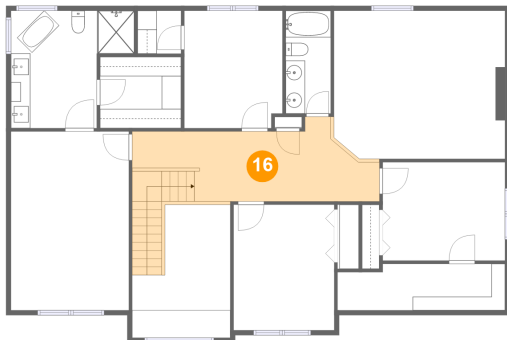
15 Floor 3 - Bath



Max Dimensions: 4'7" x 10'7"
Calculated Area: 49 sq. ft
Included: Yes

Heated: Yes
Finished: Yes
Enclosed: Yes
Contiguous: Yes
Permitted: Yes
Wet space: Yes
Addition: No
Conversion: No

16 Floor 3 - Hall



Max Dimensions: 25'6" x 8'9"
Calculated Area: 206 sq. ft
Included: Yes

Heated: Yes
Finished: Yes
Enclosed: Yes
Contiguous: Yes
Permitted: Yes
Wet space: No
Addition: No
Conversion: No

17 Floor 3 - Open To Below



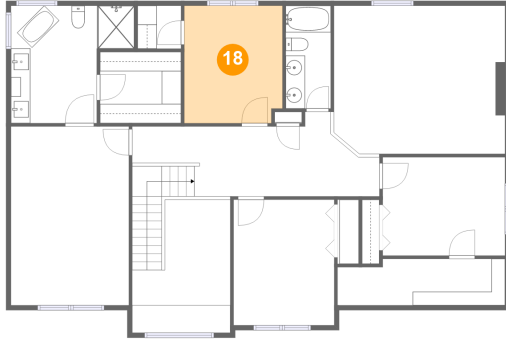
Max Dimensions: 17'8" x 15'3"
Calculated Area: 267 sq. ft
Included: No

Heated: No
Finished: No
Enclosed: No
Contiguous: Yes
Permitted: No
Wet space: No
Addition: No
Conversion: No

Home report

145 West Court, Batavia, Kane County, Illinois, United States,
60510

18 Floor 3 - Bedroom



Max Dimensions: 10'1" x 12'1"
Calculated Area: 121 sq. ft
Included: Yes

Heated: Yes
Finished: Yes
Enclosed: Yes
Contiguous: Yes
Permitted: Yes
Wet space: No
Addition: No
Conversion: No

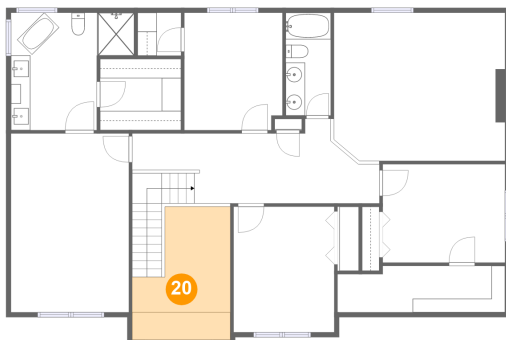
19 Floor 3 - Primary Bath



Max Dimensions: 12'9" x 12'1"
Calculated Area: 124 sq. ft
Included: Yes

Heated: Yes
Finished: Yes
Enclosed: Yes
Contiguous: Yes
Permitted: Yes
Wet space: Yes
Addition: No
Conversion: No

20 Floor 3 - Open To Below

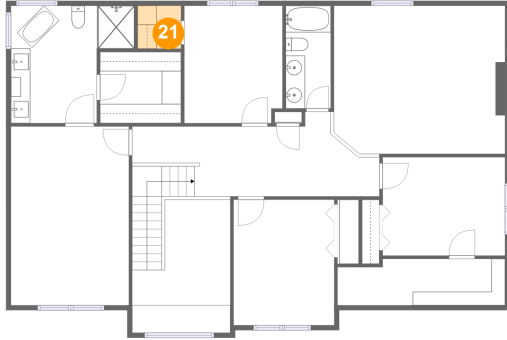


Max Dimensions: 10'2" x 10'11"
Calculated Area: 115 sq. ft
Included: No

Heated: No
Finished: No
Enclosed: No
Contiguous: Yes
Permitted: No
Wet space: No
Addition: No
Conversion: No

145 West Court, Batavia, Kane County, Illinois, United States,
60510

21 Floor 3 - W.I.C.



Max Dimensions: 4'6" x 4'5"
Calculated Area: 20 sq. ft
Included: Yes

Heated: Yes
Finished: Yes
Enclosed: Yes
Contiguous: Yes
Permitted: Yes
Wet space: No
Addition: No
Conversion: No

22 Floor 3 - W.I.C.



Max Dimensions: 8'4" x 7'4"
Calculated Area: 61 sq. ft
Included: Yes

Heated: Yes
Finished: Yes
Enclosed: Yes
Contiguous: Yes
Permitted: Yes
Wet space: No
Addition: No
Conversion: No

23 Floor 3 - Primary Bedroom



Max Dimensions: 12'2" x
18'5"
Calculated Area: 224 sq. ft
Included: Yes

Heated: Yes
Finished: Yes
Enclosed: Yes
Contiguous:
Yes
Permitted: Yes
Wet space: No
Addition: No
Conversion: No

145 West Court, Batavia, Kane County, Illinois, United States,
60510

24 Floor 3 - Bedroom



Max Dimensions: 10'5" x 12'11"
Calculated Area: 135 sq. ft
Included: Yes

Heated: Yes
Finished: Yes
Enclosed: Yes
Contiguous: Yes
Permitted: Yes
Wet space: No
Addition: No
Conversion: No