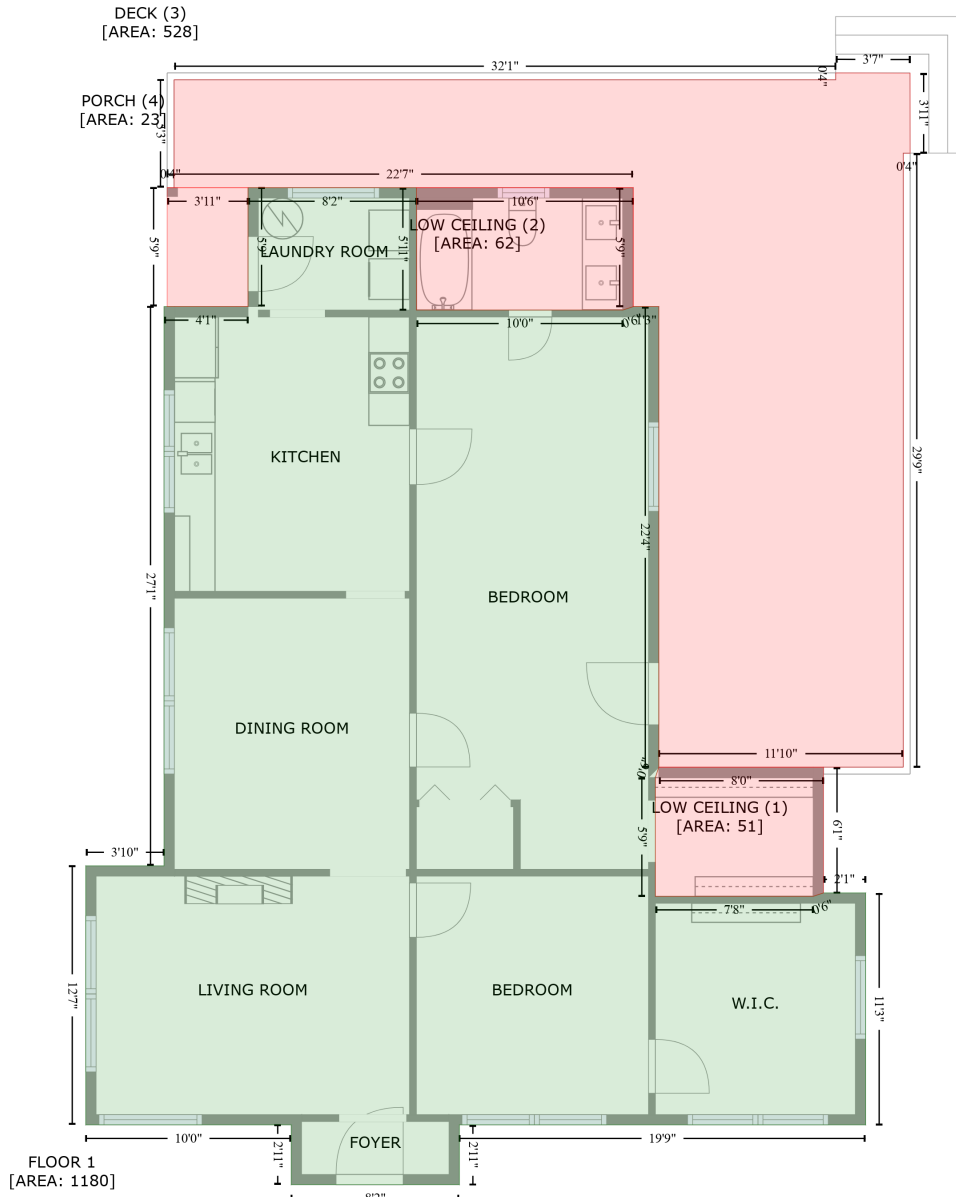


1409 Miles Road, Dallas, Gaston County, North Carolina, United States, 28034

Gross Living Area: 1180 sq. ft



Space

Area (sq. ft)

Calculation Coordinate Polygon Area Algorithm using inches

FLOOR 1
(Living area)

1180

$$\begin{aligned}
 & -((199.3 + 199.3) * (98.9 - 170.1) + (199.3 + 319.6) * (170.1 - 170.1) + (319.6 + 325.6) * (170.1 - \\
 & 168.1) + (325.6 + 340.5) * (168.1 - 168.1) + (340.5 + 340.5) * (168.1 - 436.1) + (340.5 + 338.5) * \\
 & (436.1 - 442.1) + (338.5 + 338.5) * (442.1 - 511.3) + (338.5 + 430.4) * (511.3 - 511.3) + (430.4 + \\
 & 436.4) * (511.3 - 509.3) + (436.4 + 461) * (509.3 - 509.3) + (461 + 461) * (509.3 - 644.3) + (461 + \\
 & 224.3) * (644.3 - 644.3) + (224.3 + 224.3) * (644.3 - 679.1) + (224.3 + 126.4) * (679.1 - 679.1) + \\
 & (126.4 + 126.4) * (679.1 - 644.3) + (126.4 + 6.8) * (644.3 - 644.3) + (6.8 + 6.8) * (644.3 - 493.5) + \\
 & (6.8 + 52.3) * (493.5 - 493.5) + (52.3 + 52.3) * (493.5 - 168.1) + (52.3 + 101.3) * (168.1 - 168.1) +
 \end{aligned}$$

1409 Miles Road, Dallas, Gaston County, North Carolina, United States, 28034

Gross Living Area: 1180 sq. ft

Space	Area (sq. ft)	Calculation <small>Coordinate Polygon Area Algorithm using inches</small>
LOW CEILING (Non-living area)	51	$(101.3 + 101.3) * (168.1 - 98.9) + (101.3 + 199.3) * (98.9 - 98.9) * 0.5 * 0.00694$ $-((436.4 + 436.4) * (436.1 - 509.3) + (436.4 + 430.4) * (509.3 - 511.3) + (430.4 + 338.5) * (511.3 - 511.3) + (338.5 + 338.5) * (511.3 - 442.1) + (338.5 + 340.5) * (442.1 - 436.1) + (340.5 + 436.4) * (436.1 - 436.1)) * 0.5 * 0.00694$
LOW CEILING (Non-living area)	62	$-(325.6 + 325.6) * (98.9 - 168.1) + (325.6 + 319.6) * (168.1 - 170.1) + (319.6 + 199.3) * (170.1 - 170.1) + (199.3 + 199.3) * (170.1 - 98.9) + (199.3 + 325.6) * (98.9 - 98.9) * 0.5 * 0.00694$
DECK (Non-living area)	528	$-((443.5 + 486.9) * (32.1 - 32.2) + (486.9 + 486.9) * (32.2 - 78.8) + (486.9 + 482.9) * (78.8 - 78.8) + (482.9 + 482.9) * (78.8 - 436.1) + (482.9 + 340.5) * (436.1 - 436.1) + (340.5 + 340.5) * (436.1 - 168.1) + (340.5 + 325.6) * (168.1 - 168.1) + (325.6 + 325.6) * (168.1 - 98.9) + (325.6 + 54.1) * (98.9 - 98.9) + (54.1 + 58.1) * (98.9 - 98.9) + (58.1 + 58.1) * (98.9 - 36.1) + (58.1 + 443.5) * (36.1 - 36.1) + (443.5 + 443.5) * (36.1 - 32.1)) * 0.5 * 0.00694$
PORCH (Non-living area)	23	$-((101.3 + 101.3) * (98.9 - 168.1) + (101.3 + 54.1) * (168.1 - 168.1) + (54.1 + 54.1) * (168.1 - 98.9) + (54.1 + 101.3) * (98.9 - 98.9)) * 0.5 * 0.00694$