

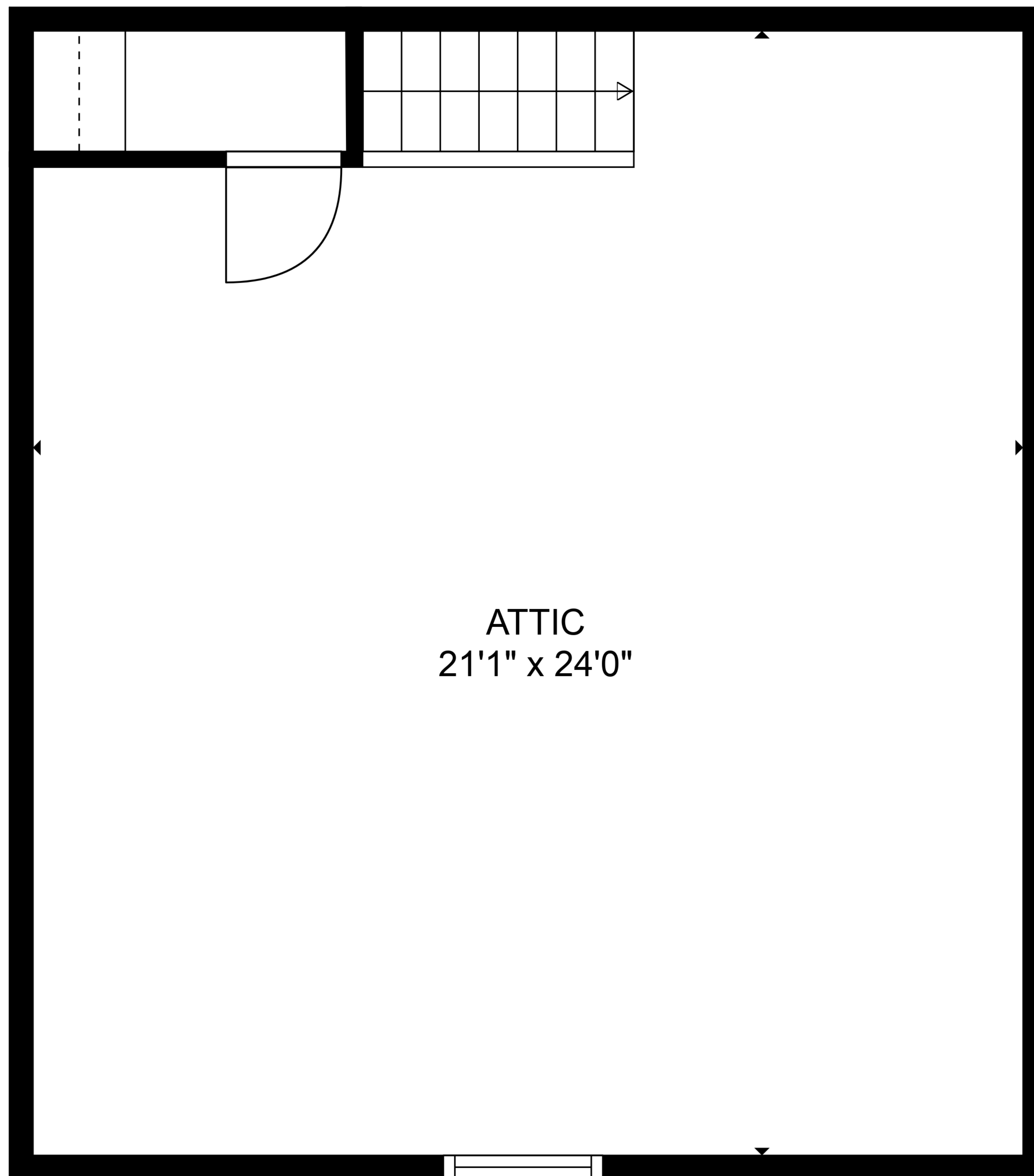
TOTAL: 1986 sq. ft

FLOOR 1: 1257 sq. ft, FLOOR 2: 21 sq. ft, FLOOR 3: 708 sq. ft

EXCLUDED AREAS: GARAGE: 506 sq. ft, LOW CEILING: 122 sq. ft, ATTIC: 369 sq. ft
WALLS: 236 sq. ft

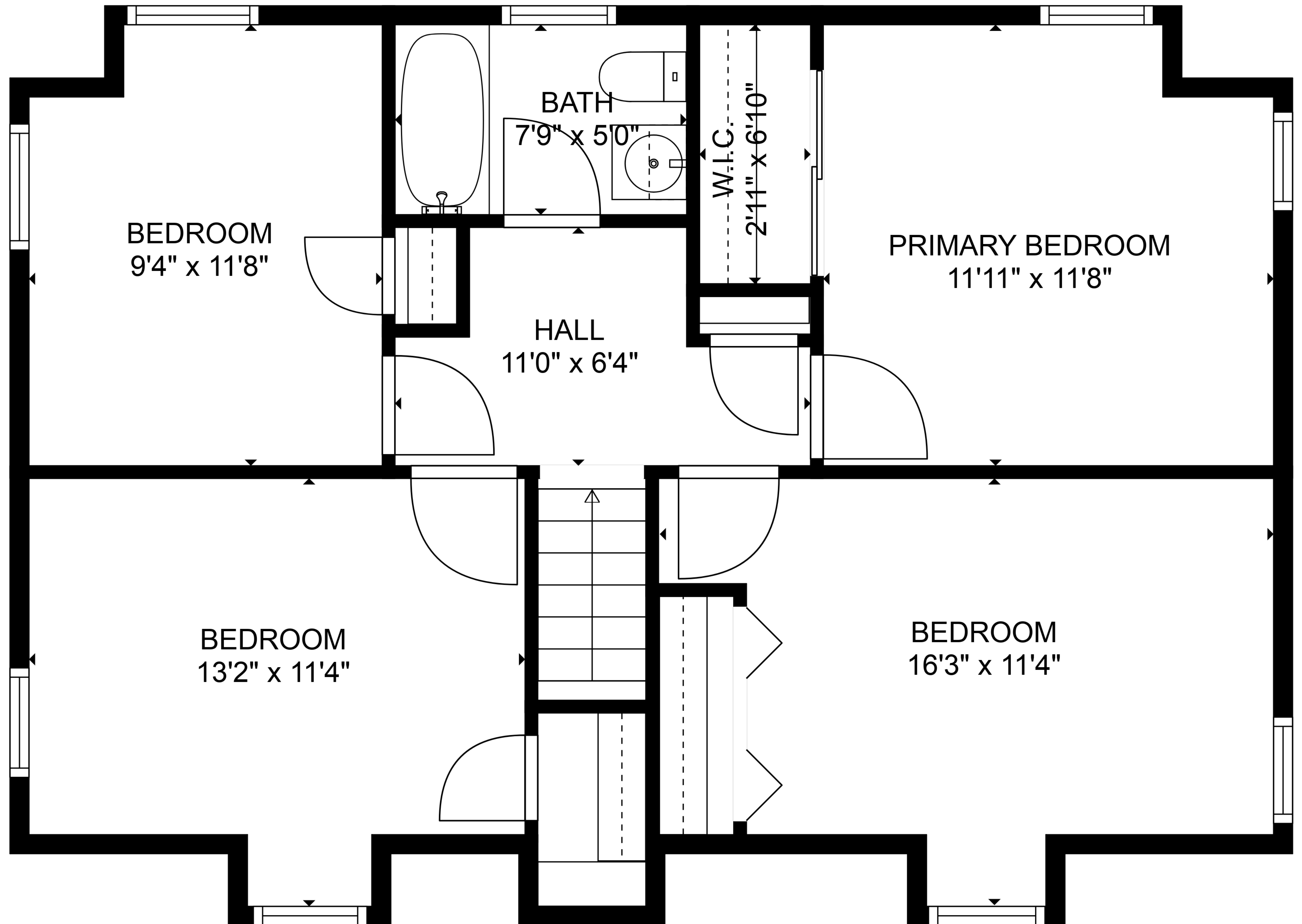


Floor Plans are provided by HouseSnappers.com. Measurements are deemed highly reliable but not guaranteed.



TOTAL: 1986 sq. ft

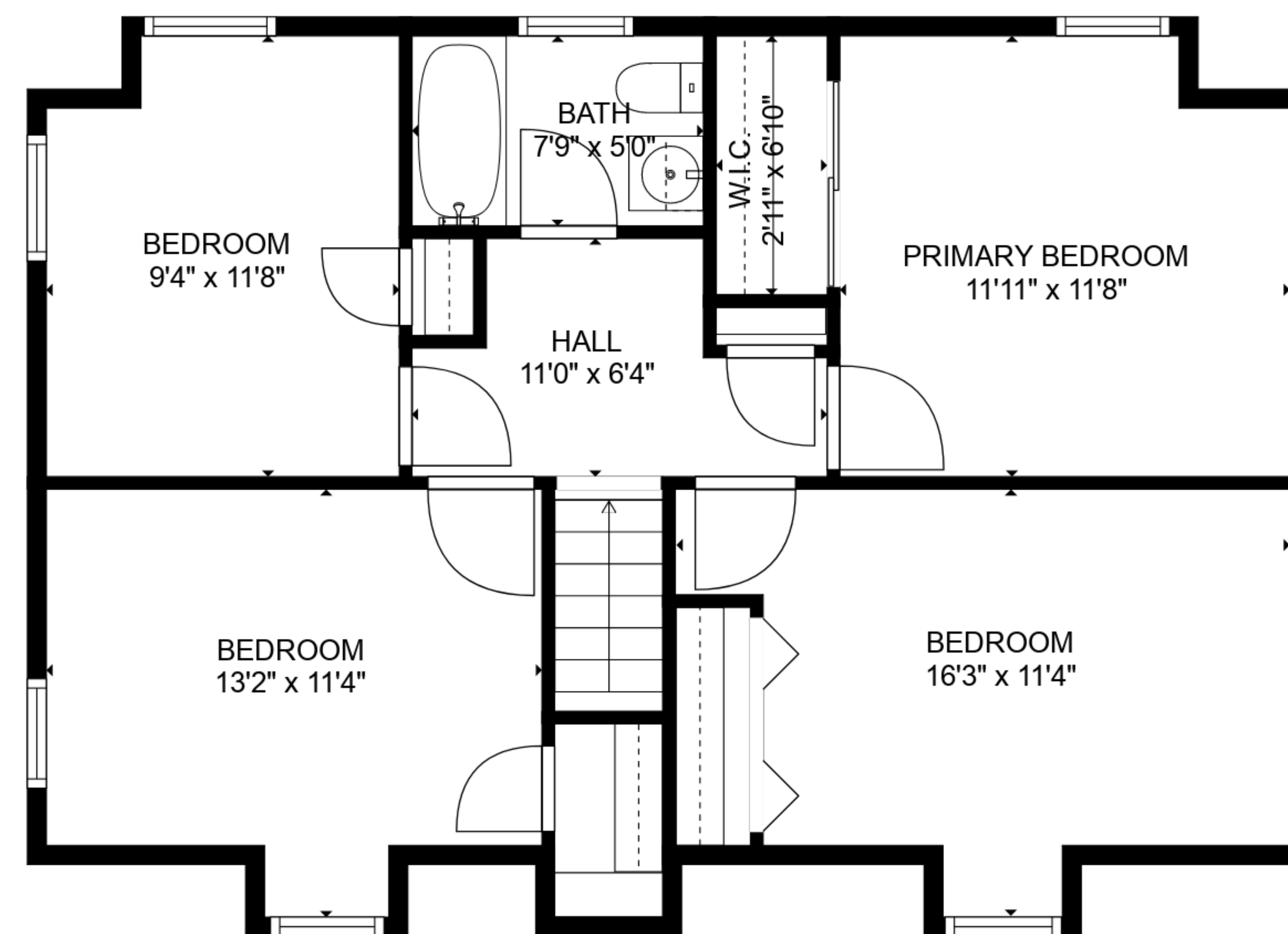
FLOOR 1: 1257 sq. ft, FLOOR 2: 21 sq. ft, FLOOR 3: 708 sq. ft
EXCLUDED AREAS: GARAGE: 506 sq. ft, LOW CEILING: 122 sq. ft, ATTIC: 369 sq. ft
WALLS: 236 sq. ft



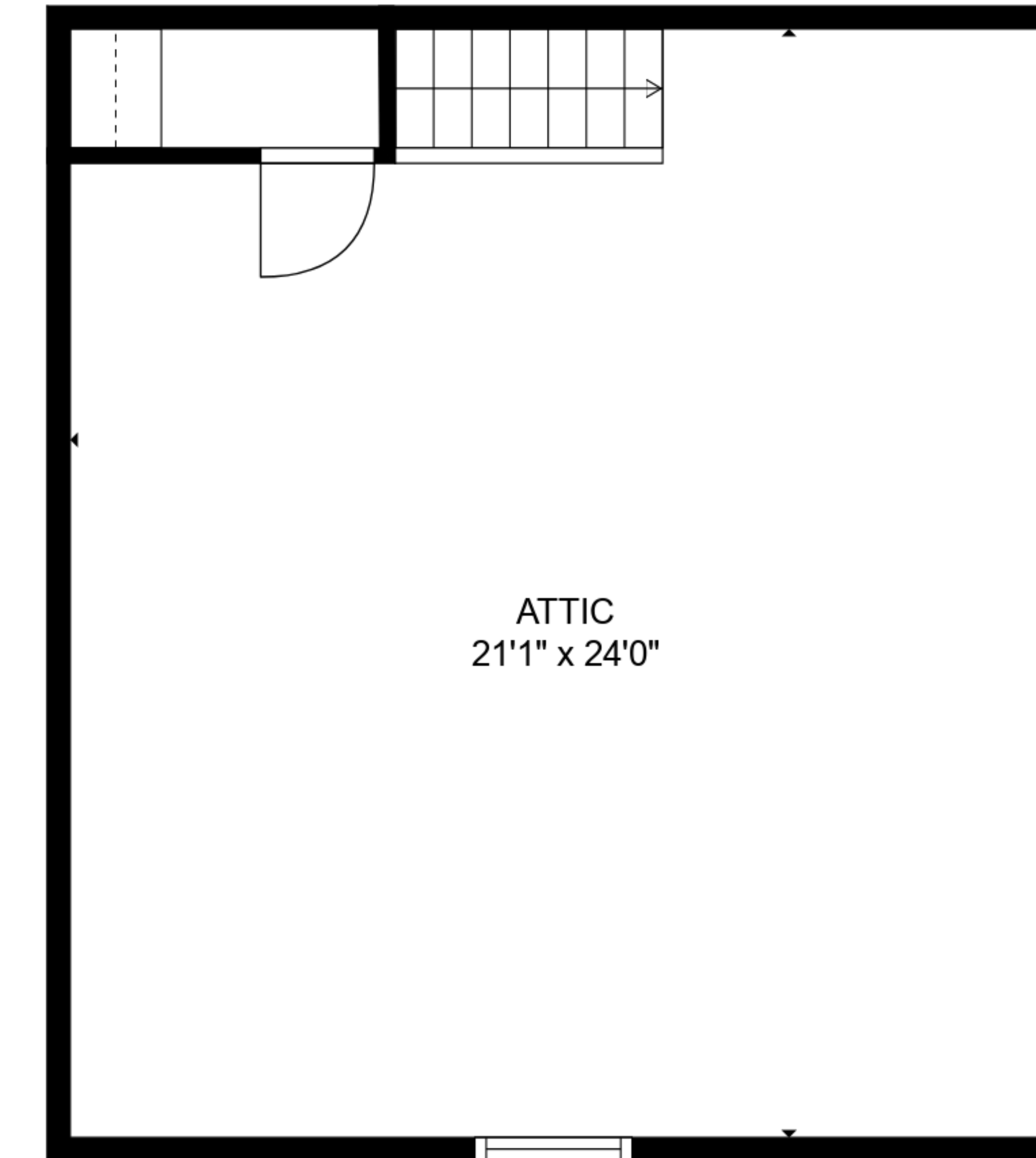
TOTAL: 1986 sq. ft

FLOOR 1: 1257 sq. ft, FLOOR 2: 21 sq. ft, FLOOR 3: 708 sq. ft

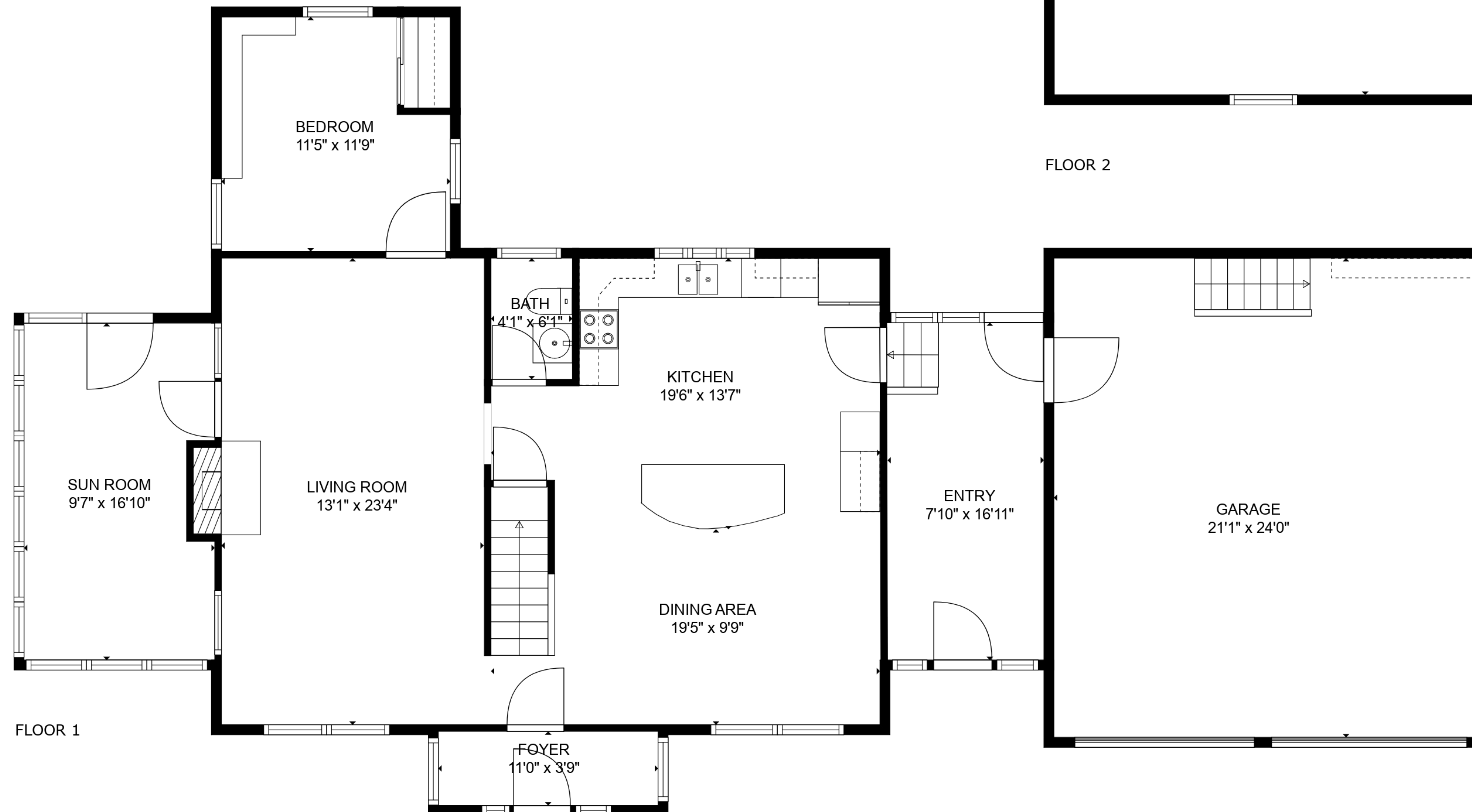
EXCLUDED AREAS: GARAGE: 506 sq. ft, LOW CEILING: 122 sq. ft, ATTIC: 369 sq. ft
WALLS: 236 sq. ft



FLOOR 3



FLOOR 2



FLOOR 1

TOTAL: 1986 sq. ft

FLOOR 1: 1257 sq. ft, FLOOR 2: 21 sq. ft, FLOOR 3: 708 sq. ft

EXCLUDED AREAS: GARAGE: 506 sq. ft, LOW CEILING: 122 sq. ft, ATTIC: 369 sq. ft
WALLS: 236 sq. ft