

Home data report

1054 Veroli Court, Lorne Park, Mississauga, Peel County, Ontario, Canada, L5H 4B9



Total Area: 2263 sq. ft

Basement: 763 sq. ft, 1st Floor: 1218 sq. ft, 2nd Floor: 1045 sq. ft


Excluded: Utility 362 sq. ft, Storage 27 sq. ft, Garage 529 sq. ft, Fireplace 16 sq. ft, Open to below 48 sq. ft

Property summary



Home data report

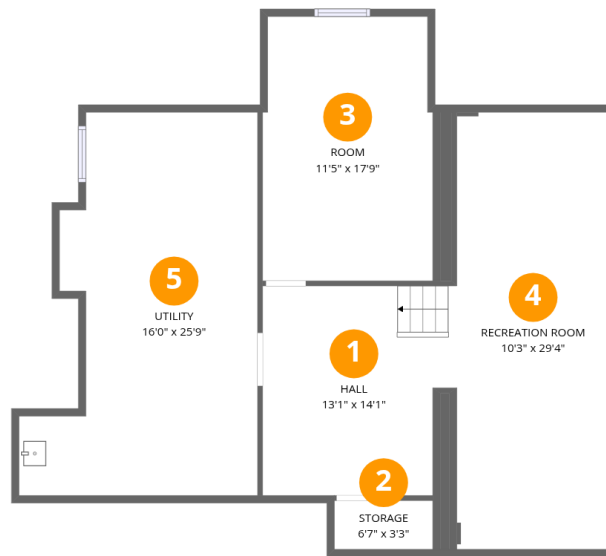
**1054 Veroli Court, Lorne Park, Mississauga, Peel County,
Ontario, Canada, L5H 4B9**

 **1**
Half baths

 **1**
Garages

Home data report

1054 Veroli Court, Lorne Park, Mississauga, Peel County, Ontario, Canada, L5H 4B9



Room dimensions

Floor 1 Below grade

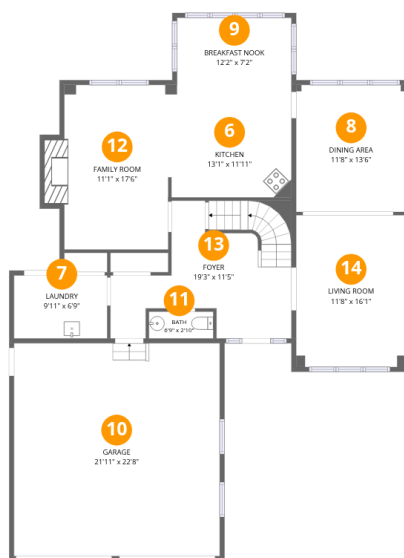
Total:763sqft

Excluded: 389sqft

#		Dimensions	sqft	Counted as living area
1	Hall	13'1" x 14'1"	172 sq. ft	Yes
2	Storage	6'7" x 3'3"	22 sq. ft	No
3	Room	11'5" x 17'9"	199 sq. ft	Yes
4	Recreation Room	10'3" x 29'4"	300 sq. ft	Yes
5	Utility	16'0" x 25'9"	330 sq. ft	No

Home data report

1054 Veroli Court, Lorne Park, Mississauga, Peel County, Ontario, Canada, L5H 4B9



Room dimensions

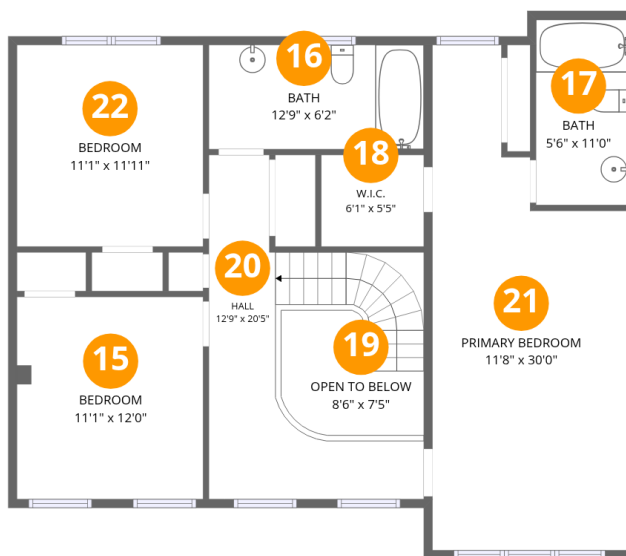
Floor 2

Total:1218sqft Excluded: 545sqft

#		Dimensions	sqft	Counted as living area
6	Kitchen	13'1" x 11'11"	157 sq. ft	Yes
7	Laundry	9'11" x 6'9"	67 sq. ft	Yes
8	Dining Area	11'8" x 13'6"	158 sq. ft	Yes
9	Breakfast Nook	12'2" x 7'2"	87 sq. ft	Yes
10	Garage	21'11" x 22'8"	495 sq. ft	No
11	Bath	6'9" x 2'10"	20 sq. ft	Yes
12	Family Room	11'1" x 17'6"	208 sq. ft	Yes
13	Foyer	19'3" x 11'5"	203 sq. ft	Yes
14	Living Room	11'8" x 16'1"	189 sq. ft	Yes

Home data report

1054 Veroli Court, Lorne Park, Mississauga, Peel County, Ontario, Canada, L5H 4B9



Room dimensions

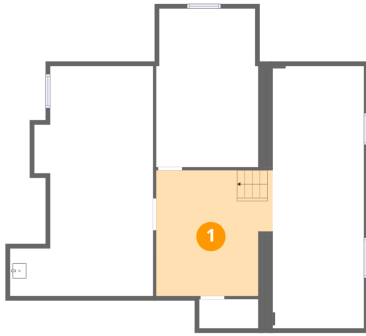
Floor 3

Total:1045sqft Excluded: 48sqft

#		Dimensions	sqft	Counted as living area
15	Bedroom	11'1" x 12'0"	133 sq. ft	Yes
16	Bath	12'9" x 6'2"	79 sq. ft	Yes
17	Bath	5'6" x 11'0"	61 sq. ft	Yes
18	W.I.C.	6'1" x 5'5"	33 sq. ft	Yes
19	Open To Below	8'6" x 7'5"	48 sq. ft	No
20	Hall	12'9" x 20'5"	160 sq. ft	Yes
21	Primary Bedroom	11'8" x 30'0"	281 sq. ft	Yes
22	Bedroom	11'1" x 11'11"	132 sq. ft	Yes

1054 Veroli Court, Lorne Park, Mississauga, Peel County,
Ontario, Canada, L5H 4B9

1 Floor 1 - Hall



Dimensions: 13'1" x 14'1"
Area: 172 sq. ft
Counted as living area: Yes

Heated: Yes
Finished: Yes
Enclosed: Yes
Contiguous: Yes
Permitted: Yes
Wet space: No
Addition: No
Conversion: No

2 Floor 1 - Storage

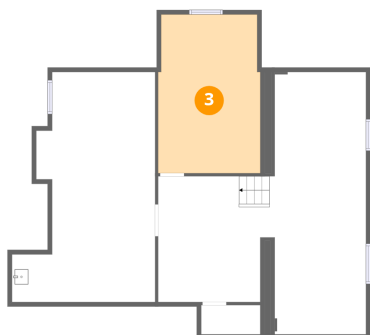


Dimensions: 6'7" x 3'3"
Area: 22 sq. ft
Counted as living area: No

Heated: No
Finished: No
Enclosed: No
Contiguous: Yes
Permitted: Yes
Wet space: No
Addition: No
Conversion: No

1054 Veroli Court, Lorne Park, Mississauga, Peel County,
Ontario, Canada, L5H 4B9

3 Floor 1 - Room



Dimensions: 11'5" x 17'9"
Area: 199 sq. ft
Counted as living area: Yes

Heated: Yes
Finished: Yes
Enclosed: Yes
Contiguous: Yes
Permitted: Yes
Wet space: No
Addition: No
Conversion: No

4 Floor 1 - Recreation Room



Dimensions: 10'3" x 29'4"
Area: 300 sq. ft
Counted as living area: Yes

Heated: Yes
Finished: Yes
Enclosed: Yes
Contiguous: Yes
Permitted: Yes
Wet space: No
Addition: No
Conversion: No

5 Floor 1 - Utility

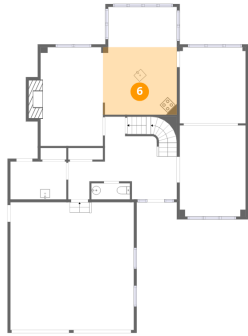


Dimensions: 16'0" x 25'9"
Area: 330 sq. ft
Counted as living area: No

Heated: Yes
Finished: No
Enclosed: Yes
Contiguous: Yes
Permitted: Yes
Wet space: No
Addition: No
Conversion: No

1054 Veroli Court, Lorne Park, Mississauga, Peel County,
Ontario, Canada, L5H 4B9

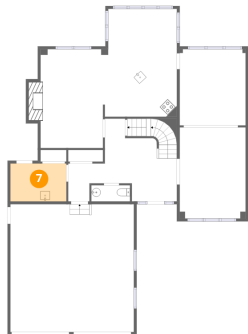
6 Floor 2 - Kitchen



Dimensions: 13'1" x 11'11"
Area: 157 sq. ft
Counted as living area: Yes

Heated: Yes
Finished: Yes
Enclosed: Yes
Contiguous: Yes
Permitted: Yes
Wet space: No
Addition: No
Conversion: No

7 Floor 2 - Laundry



Dimensions: 9'11" x 6'9"
Area: 67 sq. ft
Counted as living area: Yes

Heated: Yes
Finished: Yes
Enclosed: Yes
Contiguous: Yes
Permitted: Yes
Wet space: No
Addition: No
Conversion: No

8 Floor 2 - Dining Area

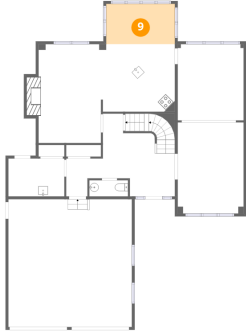


Dimensions: 11'8" x 13'6"
Area: 158 sq. ft
Counted as living area: Yes

Heated: Yes
Finished: Yes
Enclosed: Yes
Contiguous: Yes
Permitted: Yes
Wet space: No
Addition: No
Conversion: No

1054 Veroli Court, Lorne Park, Mississauga, Peel County,
Ontario, Canada, L5H 4B9

9 Floor 2 - Breakfast Nook



Dimensions: 12'2" x 7'2"
Area: 87 sq. ft
Counted as living area: Yes

Heated: Yes
Finished: Yes
Enclosed: Yes
Contiguous: Yes
Permitted: Yes
Wet space: No
Addition: No
Conversion: No

10 Floor 2 - Garage



Dimensions: 21'11" x 22'8"
Area: 495 sq. ft
Counted as living area: No

Heated: No
Finished: No
Enclosed: Yes
Contiguous: Yes
Permitted: Yes
Wet space: No
Addition: No
Conversion: No

11 Floor 2 - Bath

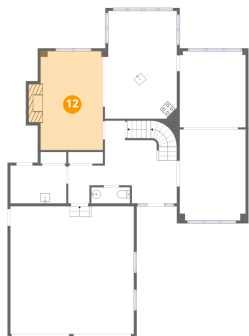


Dimensions: 6'9" x 2'10"
Area: 20 sq. ft
Counted as living area: Yes

Heated: Yes
Finished: Yes
Enclosed: Yes
Contiguous: Yes
Permitted: Yes
Wet space: Yes
Addition: No
Conversion: No

1054 Veroli Court, Lorne Park, Mississauga, Peel County,
Ontario, Canada, L5H 4B9

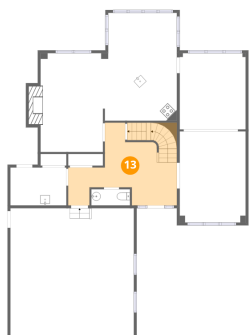
12 Floor 2 - Family Room



Dimensions: 11'1" x 17'6"
Area: 208 sq. ft
Counted as living area: Yes

Heated: Yes
Finished: Yes
Enclosed: Yes
Contiguous: Yes
Permitted: Yes
Wet space: No
Addition: No
Conversion: No

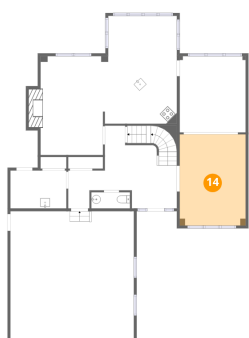
13 Floor 2 - Foyer



Dimensions: 19'3" x 11'5"
Area: 203 sq. ft
Counted as living area: Yes

Heated: Yes
Finished: Yes
Enclosed: Yes
Contiguous: Yes
Permitted: Yes
Wet space: No
Addition: No
Conversion: No

14 Floor 2 - Living Room

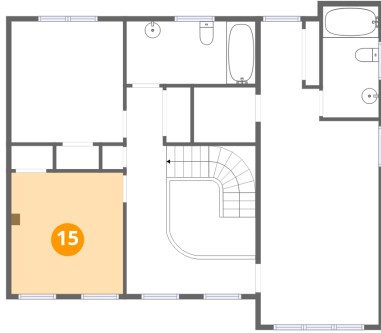


Dimensions: 11'8" x 16'1"
Area: 189 sq. ft
Counted as living area: Yes

Heated: Yes
Finished: Yes
Enclosed: Yes
Contiguous: Yes
Permitted: Yes
Wet space: No
Addition: No
Conversion: No

1054 Veroli Court, Lorne Park, Mississauga, Peel County,
Ontario, Canada, L5H 4B9

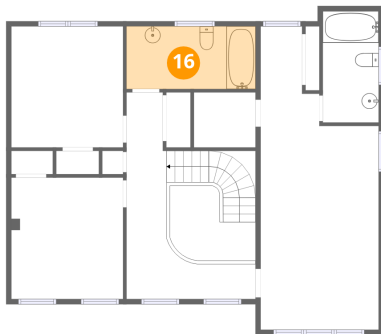
15 Floor 3 - Bedroom



Dimensions: 11'1" x 12'0"
Area: 133 sq. ft
Counted as living area: Yes

Heated: Yes
Finished: Yes
Enclosed: Yes
Contiguous: Yes
Permitted: Yes
Wet space: No
Addition: No
Conversion: No

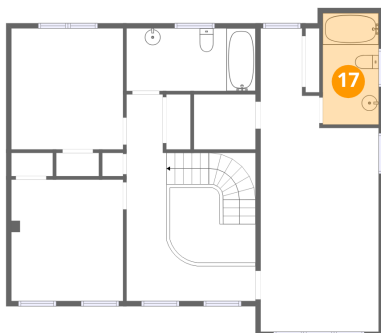
16 Floor 3 - Bath



Dimensions: 12'9" x 6'2"
Area: 79 sq. ft
Counted as living area: Yes

Heated: Yes
Finished: Yes
Enclosed: Yes
Contiguous: Yes
Permitted: Yes
Wet space: Yes
Addition: No
Conversion: No

17 Floor 3 - Bath



Dimensions: 5'6" x 11'0"
Area: 61 sq. ft
Counted as living area: Yes

Heated: Yes
Finished: Yes
Enclosed: Yes
Contiguous: Yes
Permitted: Yes
Wet space: Yes
Addition: No
Conversion: No

1054 Veroli Court, Lorne Park, Mississauga, Peel County,
Ontario, Canada, L5H 4B9

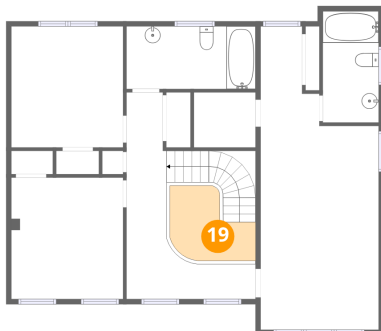
18 Floor 3 - W.I.C.



Dimensions: 6'1" x 5'5"
Area: 33 sq. ft
Counted as living area: Yes

Heated: Yes
Finished: Yes
Enclosed: Yes
Contiguous: Yes
Permitted: Yes
Wet space: No
Addition: No
Conversion: No

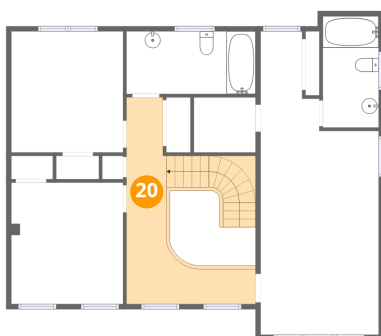
19 Floor 3 - Open To Below



Dimensions: 8'6" x 7'5"
Area: 48 sq. ft
Counted as living area: No

Heated: No
Finished: No
Enclosed: No
Contiguous: Yes
Permitted: No
Wet space: No
Addition: No
Conversion: No

20 Floor 3 - Hall

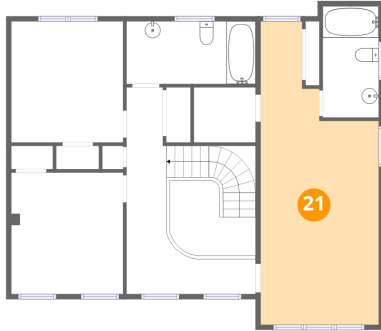


Dimensions: 12'9" x 20'5"
Area: 160 sq. ft
Counted as living area: Yes

Heated: Yes
Finished: Yes
Enclosed: Yes
Contiguous: Yes
Permitted: Yes
Wet space: No
Addition: No
Conversion: No

1054 Veroli Court, Lorne Park, Mississauga, Peel County,
Ontario, Canada, L5H 4B9

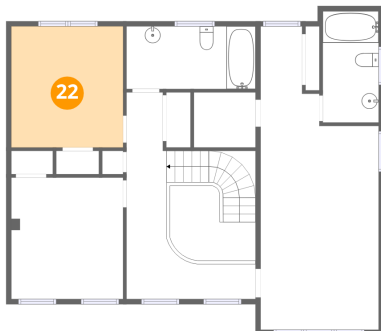
21 Floor 3 - Primary Bedroom



Dimensions: 11'8" x 30'0"
Area: 281 sq. ft
Counted as living area: Yes

Heated: Yes
Finished: Yes
Enclosed: Yes
Contiguous: Yes
Permitted: Yes
Wet space: No
Addition: No
Conversion: No

22 Floor 3 - Bedroom



Dimensions: 11'1" x 11'11"
Area: 132 sq. ft
Counted as living area: Yes

Heated: Yes
Finished: Yes
Enclosed: Yes
Contiguous: Yes
Permitted: Yes
Wet space: No
Addition: No
Conversion: No