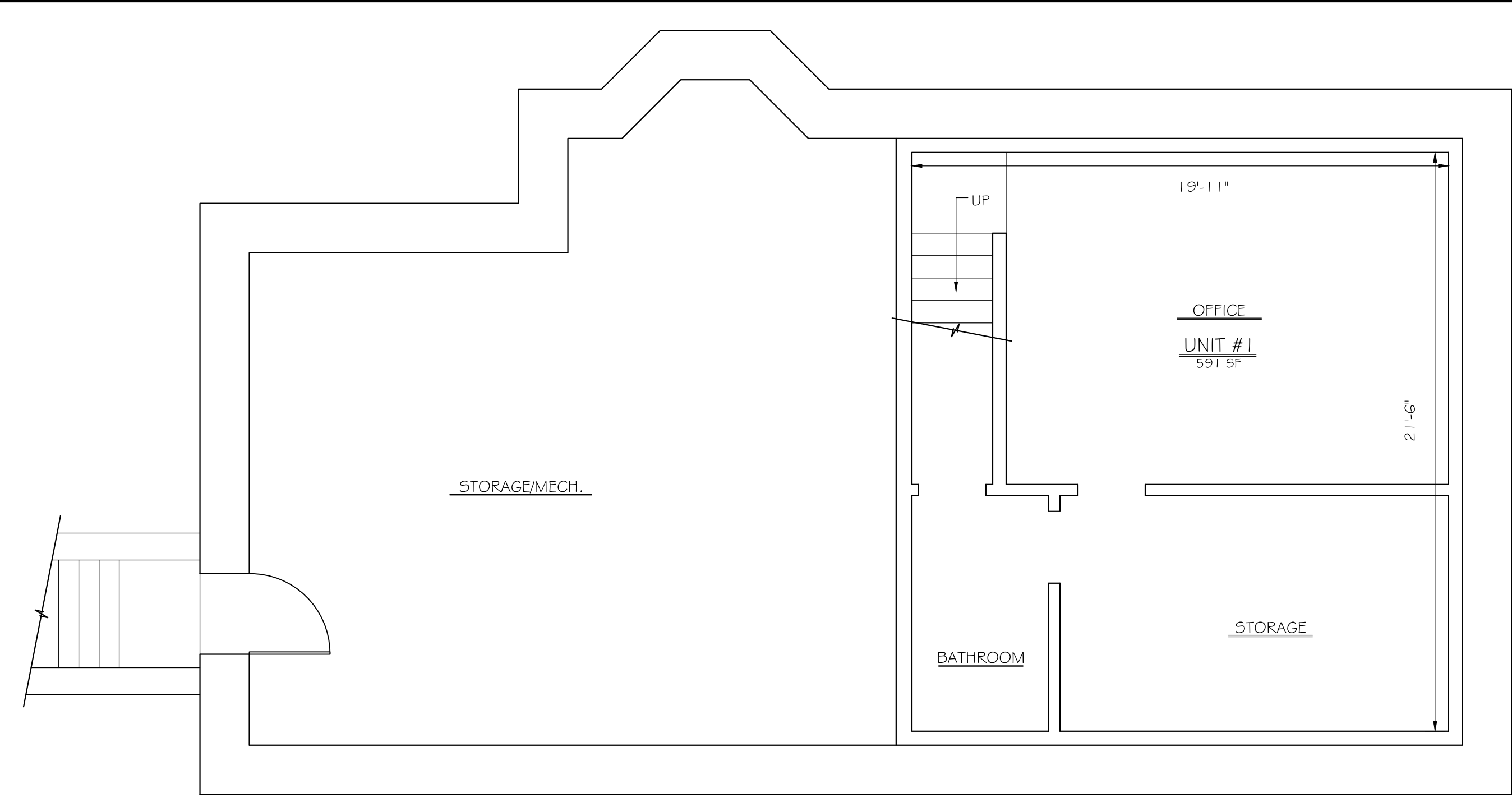
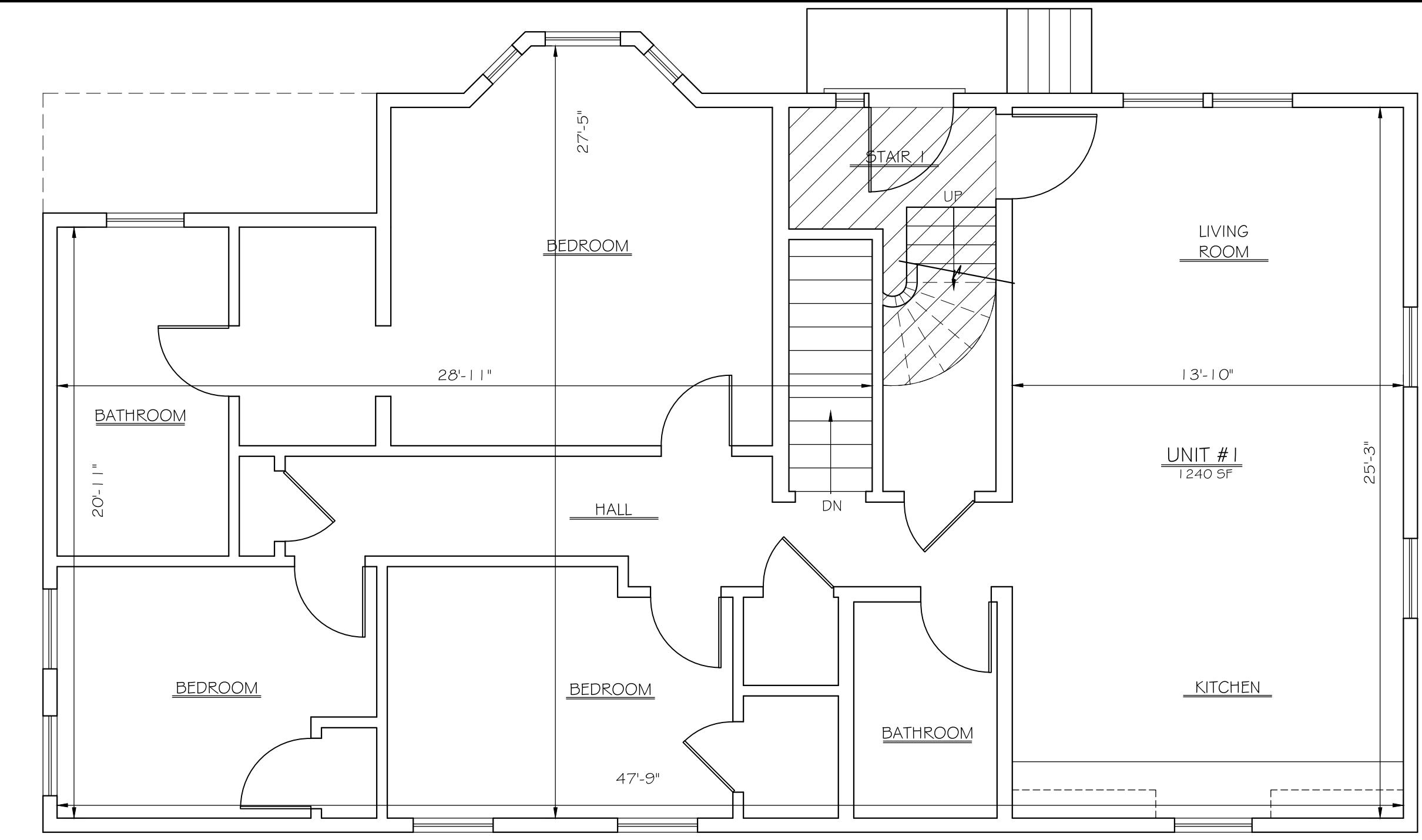


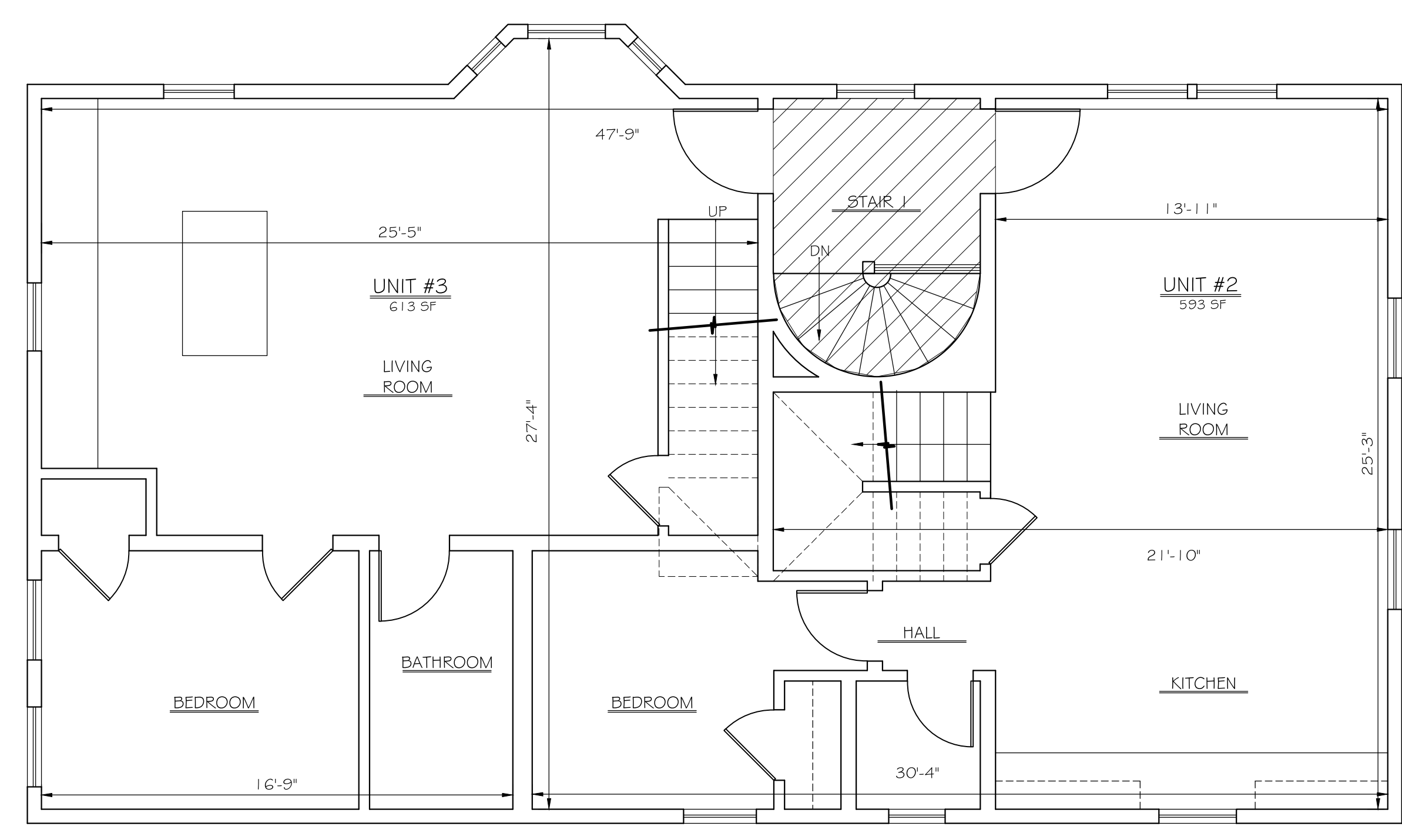
89 Bridge Street
Condominiums
89 Bridge Street
Salem, MA



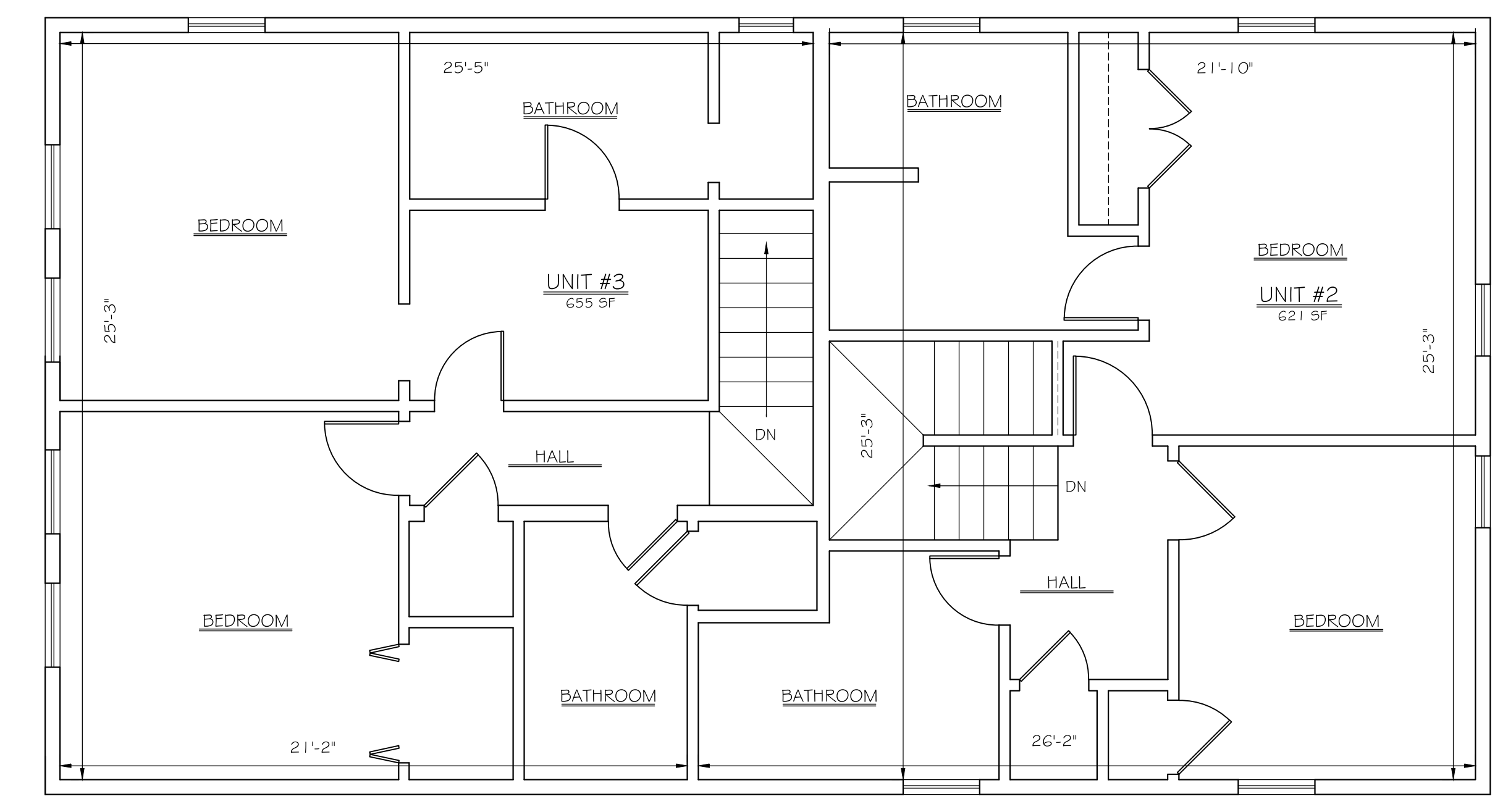
A BASEMENT FLOOR PLAN
SCALE: 1/8" = 1'-0"



B FIRST FLOOR PLAN
SCALE: 1/8" = 1'-0"



C SECOND FLOOR PLAN
SCALE: 1/4" = 1'-0"



D THIRD FLOOR PLAN
SCALE: 1/4" = 1'-0"

FOR REGISTRY USE ONLY

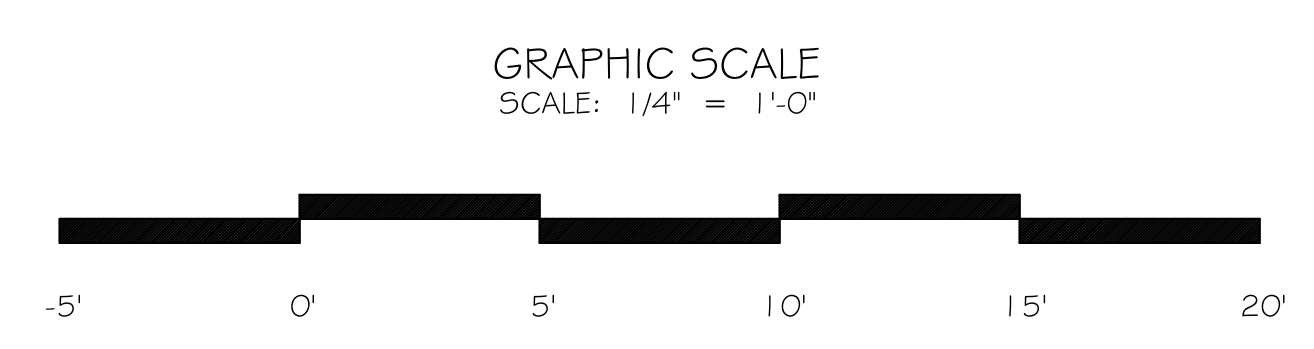
I HEREBY CERTIFY THAT THE WITHIN FLOOR PLANS FULLY AND ACCURATELY DEPICT THE LAYOUT, LOCATION, UNIT NUMBER, AND DIMENSIONS ON THE UNITS OF THE "89 BRIDGE STREET CONDOMINIUM" LOCATED AT 89 BRIDGE STREET, SALEM, MA - AS BUILT.

NAME
RYAN MCSHERA - REGISTERED ARCHITECT # 51025

DATE
I HEREBY CERTIFY THAT THIS PLAN CONFORMS WITH THE RULES AND REGULATIONS OF THE REGISTRY OF DEEDS

UNIT AREA CALCULATIONS	
UNIT #1 (LOWER FLOOR)	591 SQ. FT.
UNIT #1 (UPPER FLOOR)	1240 SQ. FT.
UNIT #1 (TOTAL)	1831 SQ. FT.
UNIT #2 (LOWER FLOOR)	593 SQ. FT.
UNIT #2 (UPPER FLOOR)	621 SQ. FT.
UNIT #2 (TOTAL)	1214 SQ. FT.
UNIT #3 (LOWER FLOOR)	613 SQ. FT.
UNIT #3 (UPPER FLOOR)	655 SQ. FT.
UNIT #3 (TOTAL)	1268 SQ. FT.

NOTE: ALL AREAS SHOWN ARE APPROXIMATE AND ALL DIMENSIONS ARE +/- 2"



No.	Date	Description
1	12.7.17	CD-1

Sheet Title:

CONDOMINIUM
UNIT PLANS

Sheet Number:

A-1