

217 Hunter St W, Peterborough, ON, CA




Property summary

 **0** Garages

 **0** Bedrooms

 **0** Bathrooms

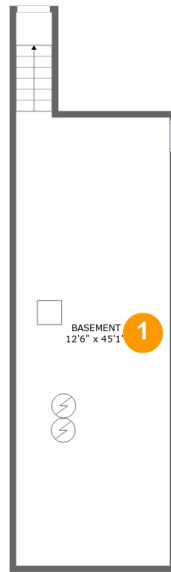
 **3** Half baths

 **3** Floors

 **1,995** Gross living area sqft

 **3,059** Total sqft

217 Hunter St W, Peterborough, ON, CA



Room dimensions

Floor 1

Total sqft: 484 Living area: 0

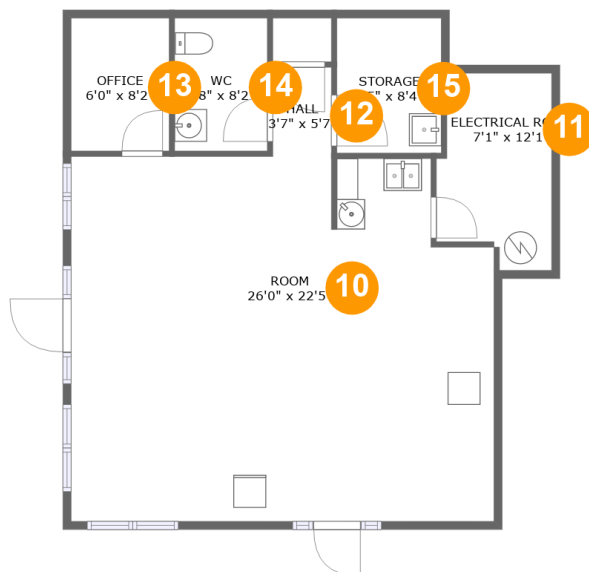
#		Dimensions	sqft	Counted as living area
1	Basement	12'6" x 45'1"	484 sq. ft	No

217 Hunter St W, Peterborough, ON, CA**Room dimensions**

Floor 2

Total sqft: 1737 Living area: 1288

#		Dimensions	sqft	Counted as living area
2	Outdoor	29'10" x 12'3"	368 sq. ft	No
3	Kitchen	23'6" x 24'4"	455 sq. ft	Yes
4	Bath	6'8" x 3'5"	23 sq. ft	Yes
5	Storage	8'11" x 9'0"	81 sq. ft	No
6	Bath	5'3" x 4'0"	21 sq. ft	Yes
7	Room	12'4" x 24'3"	300 sq. ft	Yes
8	Bar	12'9" x 22'0"	230 sq. ft	Yes
9	Room	12'9" x 16'1"	183 sq. ft	Yes

217 Hunter St W, Peterborough, ON, CA**Room dimensions**

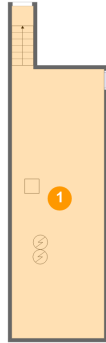
Floor 3

Total sqft: 838 Living area: 707

#		Dimensions	sqft	Counted as living area
10	Room	26'0" x 22'5"	559 sq. ft	Yes
11	Room	7'1" x 12'1"	76 sq. ft	No
12	Hall	3'7" x 5'7"	20 sq. ft	Yes
13	Office	6'0" x 8'2"	49 sq. ft	Yes
14	Bath	5'8" x 8'2"	47 sq. ft	Yes
15	Storage	6'5" x 8'4"	53 sq. ft	No

217 Hunter St W, Peterborough, ON, CA

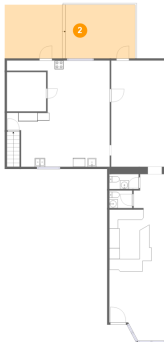
1 Floor 1 - Basement



Dimensions: 12'6" x 45'1"
Area: 484 sq. ft
Counted as living area: No

Heated: No
Finished: No
Enclosed: Yes
Contiguous: Yes
Permitted: Yes
Wet space: No
Addition: No
Conversion: No

2 Floor 2 - Outdoor

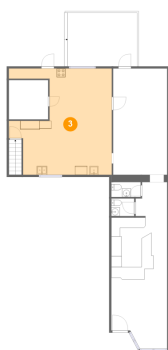


Dimensions: 29'10" x 12'3"
Area: 368 sq. ft
Counted as living area: No

Heated: No
Finished: Yes
Enclosed: No
Contiguous: Yes
Permitted: Yes
Wet space: No
Addition: No
Conversion: No

217 Hunter St W, Peterborough, ON, CA

3 Floor 2 - Kitchen



Dimensions: 23'6" x 24'4"
Area: 455 sq. ft
Counted as living area: Yes

Heated: Yes
Finished: Yes
Enclosed: Yes
Contiguous: Yes
Permitted: Yes
Wet space: No
Addition: No
Conversion: No

4 Floor 2 - Bath



Dimensions: 6'8" x 3'5"
Area: 23 sq. ft
Counted as living area: Yes

Heated: Yes
Finished: Yes
Enclosed: Yes
Contiguous: Yes
Permitted: Yes
Wet space: Yes
Addition: No
Conversion: No

5 Floor 2 - Storage



Dimensions: 8'11" x 9'0"
Area: 81 sq. ft
Counted as living area: No

Heated: No
Finished: No
Enclosed: No
Contiguous: Yes
Permitted: Yes
Wet space: No
Addition: No
Conversion: No

217 Hunter St W, Peterborough, ON, CA

6 Floor 2 - Bath



Dimensions: 5'3" x 4'0"
Area: 21 sq. ft
Counted as living area: Yes

Heated: Yes
Finished: Yes
Enclosed: Yes
Contiguous: Yes
Permitted: Yes
Wet space: Yes
Addition: No
Conversion: No

7 Floor 2 - Room



Dimensions: 12'4" x 24'3"
Area: 300 sq. ft
Counted as living area: Yes

Heated: Yes
Finished: Yes
Enclosed: Yes
Contiguous: Yes
Permitted: Yes
Wet space: No
Addition: No
Conversion: No

8 Floor 2 - Bar



Dimensions: 12'9" x 22'0"
Area: 230 sq. ft
Counted as living area: Yes

Heated: Yes
Finished: Yes
Enclosed: Yes
Contiguous: Yes
Permitted: Yes
Wet space: No
Addition: No
Conversion: No

217 Hunter St W, Peterborough, ON, CA

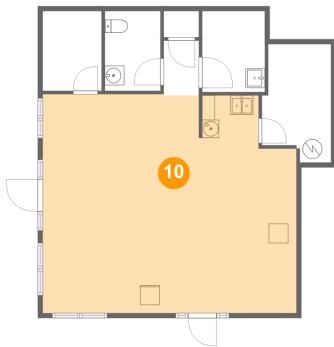
9 Floor 2 - Room



Dimensions: 12'9" x 16'1"
Area: 183 sq. ft
Counted as living area: Yes

Heated: Yes
Finished: Yes
Enclosed: Yes
Contiguous: Yes
Permitted: Yes
Wet space: No
Addition: No
Conversion: No

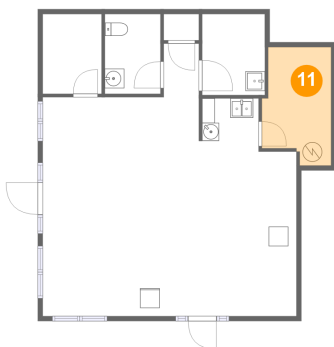
10 Floor 3 - Room



Dimensions: 26'0" x 22'5"
Area: 559 sq. ft
Counted as living area: Yes

Heated: Yes
Finished: Yes
Enclosed: Yes
Contiguous: Yes
Permitted: Yes
Wet space: No
Addition: No
Conversion: No

11 Floor 3 - Room

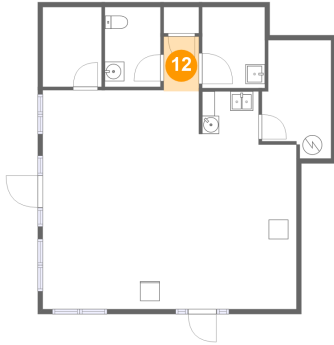


Dimensions: 7'1" x 12'1"
Area: 76 sq. ft
Counted as living area: No

Heated: No
Finished: No
Enclosed: Yes
Contiguous: Yes
Permitted: Yes
Wet space: No
Addition: No
Conversion: No

217 Hunter St W, Peterborough, ON, CA

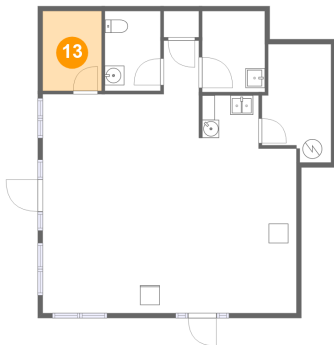
12 Floor 3 - Hall



Dimensions: 3'7" x 5'7"
Area: 20 sq. ft
Counted as living area: Yes

Heated: Yes
Finished: Yes
Enclosed: Yes
Contiguous: Yes
Permitted: Yes
Wet space: No
Addition: No
Conversion: No

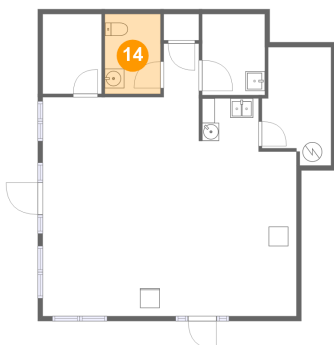
13 Floor 3 - Office



Dimensions: 6'0" x 8'2"
Area: 49 sq. ft
Counted as living area: Yes

Heated: Yes
Finished: Yes
Enclosed: Yes
Contiguous: Yes
Permitted: Yes
Wet space: No
Addition: No
Conversion: No

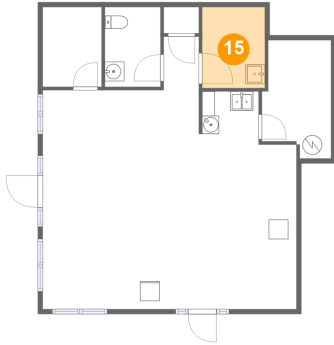
14 Floor 3 - Bath



Dimensions: 5'8" x 8'2"
Area: 47 sq. ft
Counted as living area: Yes

Heated: Yes
Finished: Yes
Enclosed: Yes
Contiguous: Yes
Permitted: Yes
Wet space: Yes
Addition: No
Conversion: No

15 Floor 3 - Storage



Dimensions: 6'5" x 8'4"
Area: 53 sq. ft
Counted as living area: No

Heated: No
Finished: No
Enclosed: No
Contiguous: Yes
Permitted: Yes
Wet space: No
Addition: No
Conversion: No